

## Product datasheet for **RC228058**

### LOC728392 (NM\_001162371) Human Tagged ORF Clone

#### Product data:

**Product Type:** Expression Plasmids  
**Product Name:** LOC728392 (NM\_001162371) Human Tagged ORF Clone  
**Tag:** Myc-DDK  
**Symbol:** LOC728392  
**Mammalian Cell Selection:** Neomycin  
**Vector:** pCMV6-Entry (PS100001)  
**E. coli Selection:** Kanamycin (25 ug/mL)  
**ORF Nucleotide Sequence:** >RC228058 representing NM\_001162371  
Red=Cloning site Blue=ORF Green=Tags(s)

TTTTGTAATACGACTCACTATAGGGCGGCCGGAATTCGTCGACTGGATCCGGTACCGAGGAGATCTGCC  
GCCGCGATCGCC

ATGGCTGACGGGCTCTTTCGGCGCAGACCCTGGGGTCTCGAGCAGATTCGCCCGGACCCCGAGTCCGAAG  
 GCCTGTTTGACAAGCCTCCCCGGAAGACCCTCCCGCTGCCCGCGGGCCAGGTCGGCGTCGGCCGCGGG  
 CAAGAAGGCTGGTCGGCGCGCGGGGAGGGCGCAGGGGGCCGCGCCGGGCAGCCCCGAAGGCCGCA  
 TCGCGCCCCCGCCAAGAAGGAGGCGCCTCCACTGGACGAGGGCTGCTATCTCGACCATTTCCGCACC  
 TCTCCATCTTCATCTACGCAGCCATCGCCTTCTCCATCACCTCTGCATCTTTACCTATATCCATTACA  
 GCTTGCC

ACGCGTACGCGGCCGCTCGAGCAGAACTCATCTCAGAAGAGGATCTGGCAGCAAATGATATCCTGGATT  
 ACAAGGATGACGACGATAAGGTTTAA

**Protein Sequence:** >RC228058 representing NM\_001162371  
Red=Cloning site Green=Tags(s)

MADGLFRRRPWGLEQIRPDPESEGLFDKPPPEDPPAARGPRASAAAGKKAGRRAGGRAQGGGRAGQPPKAA  
 SRPPPKKEAPPLDEGCYLDHFPPLSIFIIYAAIAFSITSCIFTYIHLQLA

TRTRPLEQKLISEEDLAANDILDYKDDDDKV

**Chromatograms:** [https://cdn.origene.com/chromatograms/mk8037\\_e08.zip](https://cdn.origene.com/chromatograms/mk8037_e08.zip)

**Restriction Sites:** Sgfl-MluI



[View online »](#)

**Cloning Scheme:**


**ACCN:** NM\_001162371

**ORF Size:** 357 bp

**OTI Disclaimer:** The molecular sequence of this clone aligns with the gene accession number as a point of reference only. However, individual transcript sequences of the same gene can differ through naturally occurring variations (e.g. polymorphisms), each with its own valid existence. This clone is substantially in agreement with the reference, but a complete review of all prevailing variants is recommended prior to use. [More info](#)

**OTI Annotation:** This clone was engineered to express the complete ORF with an expression tag. Expression varies depending on the nature of the gene.

**Components:** The ORF clone is ion-exchange column purified and shipped in a 2D barcoded Matrix tube containing 10ug of transfection-ready, dried plasmid DNA (reconstitute with 100 ul of water).

- Reconstitution Method:**
1. Centrifuge at 5,000xg for 5min.
  2. Carefully open the tube and add 100ul of sterile water to dissolve the DNA.
  3. Close the tube and incubate for 10 minutes at room temperature.
  4. Briefly vortex the tube and then do a quick spin (less than 5000xg) to concentrate the liquid at the bottom.
  5. Store the suspended plasmid at -20°C. The DNA is stable for at least one year from date of shipping when stored at -20°C.

**RefSeq:** [NM\\_001162371.3](#)

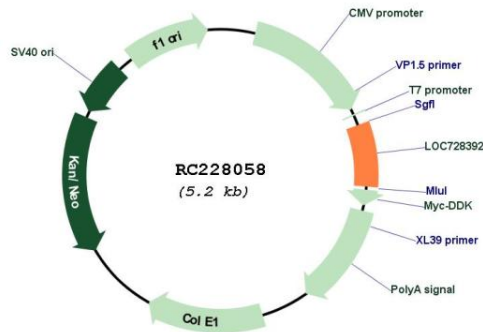
**RefSeq ORF:** 360 bp

**Locus ID:** 728392

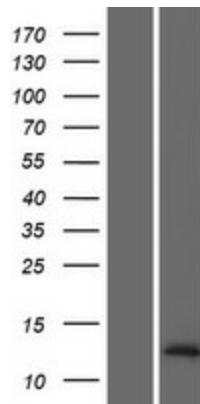
**Cytogenetics:** 17p13.2

MW: 12.7 kDa

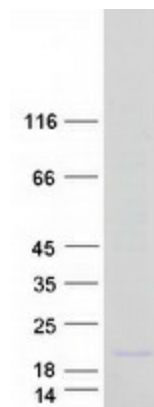
Product images:



Circular map for RC228058



Western blot validation of overexpression lysate (Cat# [LY431086]) using anti-DDK antibody (Cat# [TA50011-100]). Left: Cell lysates from untransfected HEK293T cells; Right: Cell lysates from HEK293T cells transfected with RC228058 using transfection reagent MegaTran 2.0 (Cat# [TT210002]).



Coomassie blue staining of purified LOC728392 protein (Cat# [TP328058]). The protein was produced from HEK293T cells transfected with LOC728392 cDNA clone (Cat# RC228058) using MegaTran 2.0 (Cat# [TT210002]).