

Product datasheet for RC228039

BRI3 (NM_001159491) Human Tagged ORF Clone

Product data:

Product Type: Expression Plasmids
Product Name: BRI3 (NM_001159491) Human Tagged ORF Clone
Tag: Myc-DDK
Symbol: BRI3
Synonyms: I3
Mammalian Cell Selection: Neomycin
Vector: pCMV6-Entry (PS100001)
E. coli Selection: Kanamycin (25 ug/mL)
ORF Nucleotide Sequence: >RC228039 representing NM_001159491
 Red=Cloning site Blue=ORF Green=Tags(s)

CTATAGGCGCGCCGGAATTTCGTGCGACTGGATCCGGTACCGAGGAGATCTGCC
 GCCCGCATCGCC

ATGGACCACAAGCCGCTGCTGCAGGAGCGGCCGCCCGCTACAACCTGGAGGCGGCCAGGGCGACTACG
 CGTGCGGCCCGCACGGCTACGGCGCCATCCCCGCCGCCCGCCCGCCCGCTACCCCTACCTCGTCAC
 AGGGATACCCACCCACCATCCAGGGTCTACAACATCCACAGCCGACCGTCACCCGCTATCCTGCCAAC
 TCTATCGTGGTCGTAGGAGGCTGTCTGTCTGCAGGCACCAGAGGTCATCCTGGCTTACACGTATCCTT
 TGAGAGTCTGTACC

CTCGAGCAGAACTCATCTCAGAAGAGGATCTGGCAGCAAATGATATCCTGGATTACAAGGATGACGACG
 ATAAGGTTTAA

Protein Sequence: >RC228039 representing NM_001159491
 Red=Cloning site Green=Tags(s)

MDHKPLLQERPPAYNLEAGQGDYACGPHGYGAIPAAPPPPPYPYLVTGIPTHHPRVYNIHSRTVTRYPAN
 SIYVVGCPVCRHQRSSWLYTYPLRVCT

LEQKLISEEDLAANDILDYKDDDDKV

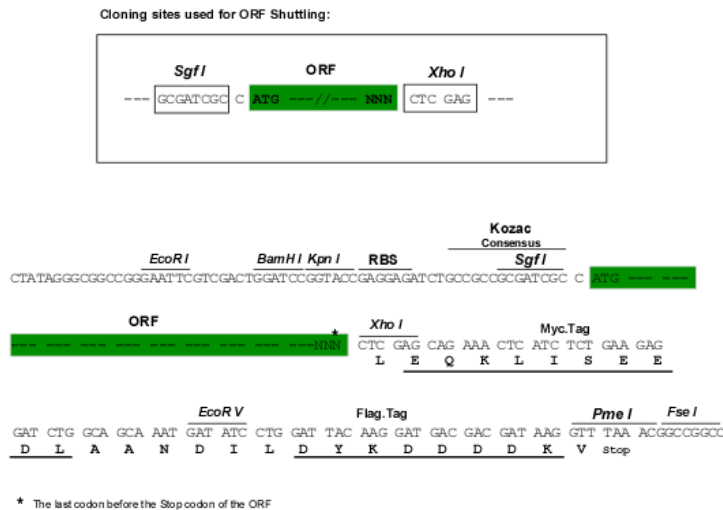
Chromatograms: https://cdn.origene.com/chromatograms/mk8100_e07.zip

Restriction Sites: SgfI-XhoI



[View online »](#)

Cloning Scheme:



ACCN: NM_001159491

ORF Size: 294 bp

OTI Disclaimer: The molecular sequence of this clone aligns with the gene accession number as a point of reference only. However, individual transcript sequences of the same gene can differ through naturally occurring variations (e.g. polymorphisms), each with its own valid existence. This clone is substantially in agreement with the reference, but a complete review of all prevailing variants is recommended prior to use. [More info](#)

OTI Annotation: This clone was engineered to express the complete ORF with an expression tag. Expression varies depending on the nature of the gene.

Components: The ORF clone is ion-exchange column purified and shipped in a 2D barcoded Matrix tube containing 10ug of transfection-ready, dried plasmid DNA (reconstitute with 100 ul of water).

Reconstitution Method:

1. Centrifuge at 5,000xg for 5min.
2. Carefully open the tube and add 100ul of sterile water to dissolve the DNA.
3. Close the tube and incubate for 10 minutes at room temperature.
4. Briefly vortex the tube and then do a quick spin (less than 5000xg) to concentrate the liquid at the bottom.
5. Store the suspended plasmid at -20°C. The DNA is stable for at least one year from date of shipping when stored at -20°C.

Note: Plasmids are not sterile. For experiments where strict sterility is required, filtration with 0.22um filter is required.

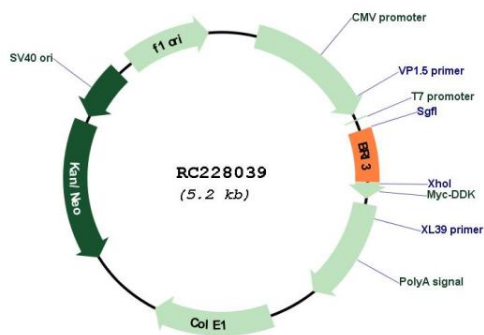
RefSeq: [NM_001159491.2](#)

RefSeq Size: 699 bp

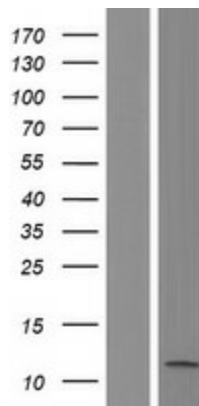
RefSeq ORF: 297 bp

Locus ID:	25798
UniProt ID:	O95415
Cytogenetics:	7q21.3
Protein Families:	Transmembrane
MW:	10.9 kDa
Gene Summary:	Participates in tumor necrosis factor-alpha (TNF)-induced cell death (PubMed:14592447). May be a target of Wnt/beta-catenin signaling in the liver (PubMed:20538055).[UniProtKB/Swiss-Prot Function]

Product images:



Circular map for RC228039



Western blot validation of overexpression lysate (Cat# [LY431067]) using anti-DDK antibody (Cat# [TA50011-100]). Left: Cell lysates from untransfected HEK293T cells; Right: Cell lysates from HEK293T cells transfected with RC228039 using transfection reagent MegaTran 2.0 (Cat# [TT210002]).