

Product datasheet for RC227995

CCDC85C (NM_001144995) Human Tagged ORF Clone

Product data:

Product Type:	Expression Plasmids
Product Name:	CCDC85C (NM_001144995) Human Tagged ORF Clone
Tag:	Myc-DDK
Symbol:	CCDC85C
Mammalian Cell Selection:	Neomycin
Vector:	pCMV6-Entry (PS100001)
E. coli Selection:	Kanamycin (25 ug/mL)
ORF Nucleotide Sequence:	>RC227995 representing NM_001144995 Red=Cloning site Blue=ORF Green=Tags(s)

TTTTGTAATACGACTCACTATAGGGCGGCCGGAATTCGTCGACTGGATCCGGTACCGAGGAGATCTGCC
GCC**CGATCGCC**

ATGGCTAAGCCCGCGGCACGGCGGGCGGCGTCCGAGGAGCTGAGCCAGGTGCCGGACGAGGAGCTGC
TGCCTGGAGCAAGGAGGAGCTGGCGCGGGCGGCTGCGGCGCGCCGAGGGCGAGAAGGTGGCCCTCATGCT
GGAGCACGGCGGCTGATGCGCGACGTGAACCGGGCGGCTGCAGCAGCACCTGCTGGAGATCCGCGGCCCTC
AAGGACGTGAACCAGCGGCTGCAGGACGACAACCAGGAGCTGCGGAGCTCTGCTGCTTCTCGACGACG
ACCGCGAGAAGGGCGCAAGCTGGCGCGGAGTGGCAGCGCTTCGGGCGCCACGCGCGGCCGCGCTGTG
GCACGAGGTGGCCGCTCGCAGCAGAAGCTGCGGAGCTCGAGGCGGCCAGGAGGCCCTGCTGCGCGAG
AACCTGGAGCTCAAGGAGCTGGTCTGCTGCTGGACGAGGAGCGCGGCGCACTGGCGGCGACGGGGCCG
CAAGCGGTGGCGGCGGCGGGGGCGGCGCCGCTCCCGCAGCTCCATCGACAGCCAGGCCAGCCTGAG
CGGGCCGCTGTCGGTGGCGCGCCCGGCGGGGGCCCGCAGCTGGGCGACGGCAGCAGTACGTCCAGC
GCGGGCAGCGGCGGCGCCCGACCACCACCACCGTCCACCCCGCTGCTGCCCCCGGGCCGACACA
AGGCCCCGACGGCAAGGAGGAGCCACACGTCCGTCCTGGACGACTTGTGGCGCCGCCACCCAGC
CAGCATCCCCAACGGCTGCACGATCCCTCATCCACCTACATCAGGCAACTGGAGAGCAAAGTGAGGCTG
CTGGAGGTGACAAGCTCCTCGCACAGCAGGAGCTCCGAGAGTTCGCGACGCTGCGGAAAGGCTTCT
CGCCCTACCACTCGGAGTCCAGCTTGGTCCCTGCCGCCCTCCTACCAGGACTCCTGCAGAACGGCCC
GGCCTGCCCCGACCTGAGCTGCCTCGCCCCCTCTGCTGGCTACAGCCCTGCAGGACAGAAGCCGAG
GCTGTCGTGCATGCCATGAAGTCTGGAGGTACACGAGAATCTGGACCGGAGCTCCAGGACAGCTGTG
AGGAGGACCTGAGTGAGAAGGAGAAGGCCATCGTTCGCGAGATGTGCAACGTGGTCTGGAGAAAGCTGGG
AGATGCAGCCAGCTCCAAGCCCTCCATACGGCAGCACCTGTCTGGGAACCAAGTTCAGGGGCTTTG

ACGCGTACGCGGGCGGCTCGAGCAGAAACTCATCTCAGAAGAGGATCTGGCAGCAAATGATATCCTGGATT
ACAAGGATGACGACGATAAGGTTTAA



[View online »](#)

Protein Sequence: >RC227995 representing NM_001144995
Red=Cloning site Green=Tags(s)

MAKPAATAAAASEELSQVPDEELLRWSKEELARLRRAEGEKVGLMLEHGGLMRDVRRLQQHLLLEIRGL
 KDYNQRLQDDNQELRELCCFLDDDRQKGRKLAREWQRFGRHAAGAVWHEVARSSQQLRELEARQEALLRE
 NLELKLVLVLLDEERAALATGAASGGGGGGGAGSRSSIDSQASL SGPLSGGAPGAGARDVGDGSSTSS
 AGSGGSPDHHHHVPPPLPPGPHKAPDGKAGATRRSLDDL SAPPHRSIPNGLHDPSSSTYIRQLESKVRL
 LEGDKLLAQAGSGEFRTLKGFSPYHSEQLASLPPSYQDSLQNGPACPAPELPSPPSAGYSPAGQKPE
 AVVHAMKVLEVHENLDRQLQDSCEEDLSEKEKAI VREMCNVVWRKLGDAASSKPSIRQHLSGNQFKGPL

TRTRPLEQKLISEEDLAANDILDYKDDDDKV

Chromatograms: https://cdn.origene.com/chromatograms/mk8037_f07.zip

Restriction Sites: SgfI-MluI

Cloning Scheme:

Cloning sites used for ORF Shuttling:



* The last codon before the Stop codon of the ORF

ACCN: NM_001144995

ORF Size: 1257 bp

OTI Disclaimer: The molecular sequence of this clone aligns with the gene accession number as a point of reference only. However, individual transcript sequences of the same gene can differ through naturally occurring variations (e.g. polymorphisms), each with its own valid existence. This clone is substantially in agreement with the reference, but a complete review of all prevailing variants is recommended prior to use. [More info](#)

OTI Annotation: This clone was engineered to express the complete ORF with an expression tag. Expression varies depending on the nature of the gene.

Components: The ORF clone is ion-exchange column purified and shipped in a 2D barcoded Matrix tube containing 10ug of transfection-ready, dried plasmid DNA (reconstitute with 100 ul of water).

Reconstitution Method:

1. Centrifuge at 5,000xg for 5min.
2. Carefully open the tube and add 100ul of sterile water to dissolve the DNA.
3. Close the tube and incubate for 10 minutes at room temperature.
4. Briefly vortex the tube and then do a quick spin (less than 5000xg) to concentrate the liquid at the bottom.
5. Store the suspended plasmid at -20°C. The DNA is stable for at least one year from date of shipping when stored at -20°C.

RefSeq: [NM_001144995.2](#)

RefSeq ORF: 1260 bp

Locus ID: 317762

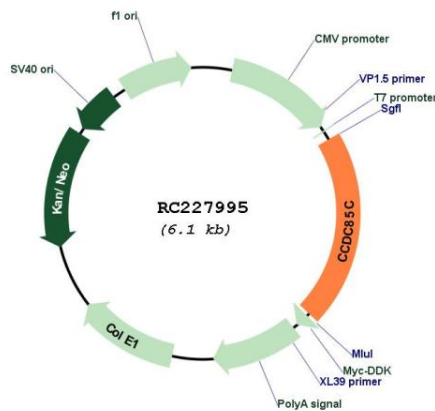
UniProt ID: [A6NKD9](#)

Cytogenetics: 14q32.2

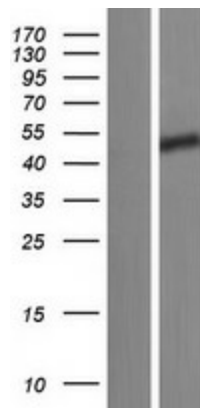
MW: 45 kDa

Gene Summary: May play an important role in cortical development, especially in the maintenance of radial glia.[UniProtKB/Swiss-Prot Function]

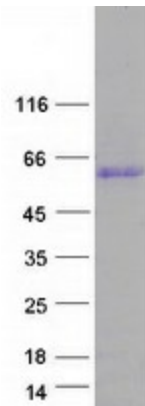
Product images:



Circular map for RC227995



Western blot validation of overexpression lysate (Cat# [LY428630]) using anti-DDK antibody (Cat# [TA50011-100]). Left: Cell lysates from untransfected HEK293T cells; Right: Cell lysates from HEK293T cells transfected with RC227995 using transfection reagent MegaTran 2.0 (Cat# [TT210002]).



Coomassie blue staining of purified CCDC85C protein (Cat# [TP327995]). The protein was produced from HEK293T cells transfected with CCDC85C cDNA clone (Cat# RC227995) using MegaTran 2.0 (Cat# [TT210002]).