

Product datasheet for **RC227993**

MNK1 (MKNK1) (NM_001135553) Human Tagged ORF Clone

Product data:

Product Type:	Expression Plasmids
Product Name:	MNK1 (MKNK1) (NM_001135553) Human Tagged ORF Clone
Tag:	Myc-DDK
Symbol:	MNK1
Synonyms:	MNK1
Mammalian Cell Selection:	Neomycin
Vector:	pCMV6-Entry (PS100001)
E. coli Selection:	Kanamycin (25 ug/mL)



[View online »](#)

ORF Nucleotide
Sequence:

>RC227993 representing NM_001135553
Red=Cloning site Blue=ORF Green=Tags(s)

TTTTGTAATACGACTCACTATAGGGCGGCCGGAATTCGTCGACTGGATCCGGTACCGAGGAGATCTGCC
GCCGCGATCGCC

ATGGTATCTTCTCAAAGTTGAAAAACCTATAGAGATGGGCAGTAGCGAACCCCTCCCATCGCAGATG
GTGACAGGAGGAGAAGAAGCGGAGGGCCGCGCCACTGACTCCTTGCCAGGAAAGTTGAAGATAT
GTACAAGCTGACCTCTGAATTGCTTGGAGAGGGAGCCTATGCCAAAGTTCAAGGTGCCGTGAGCCTACAG
AATGGCAAAGAGTATGCCGTCAAATCATCGAGAAACAAGCAGGGCACAGTCGGAGTAGGGTGTTCGAG
AGGTGGAGACGCTGTATCAGTGTGAGGAAACAAGAACATTTTGGAGCTGATTGAGTTCTTTGAAGATGA
CACAAGTTTTACTTGGTCTTTGAGAAATTGCAAGGAGTTCCATCTTAGCCACATCCAGAAGCAAAAG
CACTTCAATGAGCGAGAAGCCAGCCGAGTGGTGGGGACGTTGCTGCTGCCCTTGACTTCTGCATACCA
AAGGCATTGCTCATCGTATCTGAAACAGAAAATATATTGTGTGAATCTCCAGAAAAGGTGTCTCCAGT
GAAAATCTGTGACTTTGACTTGGCAGTGGGATGAACTGAACAACCTCCTGTACCCCATAACCCACCA
GAGCTGACCACCCATGTGGCTCTGCAGAATACATGGCCCTGAGGTAGTGGAGGTCTTACGGACCAGG
CCACATTTACGACAAGCGCTGTGACCTGTGGAGCCTGGGCGTGGTCTCTACATCATGCTGAGTGGCTA
CCCACCTTCGTGGGTCCTGCGGGGCCGACTGTGGTGGGACCGGGGCGAGGTCTGCAGGGTGTGCCAG
AACAAAGCTGTTTAAAAGCATCCAGGAAGCAAGTATGAGTTTCTGACAAGGACTGGGCACACATCTCCA
GTGAAGCCAAAGACCTCATCTCCAAGCTCCTGGTGGGAGATGCAAAGCAGAGACTTAGCGCCGCCAAGT
TCTGCAGCACCCATGGGTGCAGGGGCAAGCTCCAGAAAAGGGACTCCCCACGCCAAGTCTCCAGAGG
AACAGCAGCACAATGGACCTGACGCTCTTCGAGCTGAGGCCATCGCCCTAACCCGACGCTATCTCAGC
ACGAAGAGAACGAACTAGCAGAGGAGCCAGAGGCCACTAGCTGATGGCCTCTGCTCCATGAAGCTTTCCC
TCCTTGCAAGTACGCTTGGCCCGGAGACGGCCCTGGCCAGGCAGGCCGTGGTGAAGACAGGAGCCCG
CCACAGCACTC

ACGCGTACGCGGCCGCTCGAGCAGAACTCATCTCAGAAGAGGATCTGGCAGCAATGATATCCTGGATT
ACAAGGATGACGACGATAAGGTTTAA

Protein Sequence:

>RC227993 representing NM_001135553
Red=Cloning site Green=Tags(s)

MVSSQKLEKPIEMGSSEPLPIADGDRRRKKRRGRATDSLPGKFEDMYKL TSELLGEGAYAKVQGAVSLQ
NGKEYAVKIIIEKQAGHSRSRVFREVETLYQCQGNKNIIEFFEDDTRFYL VFEKLQGG SILAHIQKQK
HFNEREASRVVRDVAALDFLHTKGI AHRDLK PENILCESPEK VSPVKICDFDLGSGMKLNNSCTPITTP
ELTTPCGSAEYMAPEVVEVFTDQATFYDKRCDL WSLGVVLYIMLSGYPPFVGHCGADCGWDRGEVCRVCQ
NKL FESI QEGKYEFPDKDWAHISSEAKDLISKLLVRDAKQRLSAAQVLQHPWVQQAPEKGLPTPQVLQR
NSSTMDLTLFAAEIALNRQLSQHEENELAEPEALADGLCSMKLSPPCKSRLARRRALAQAGRGEDRSP
PTAL

TRTRPLEQKLISEEDLAANDILDYKDDDDKV

Chromatograms:

https://cdn.origene.com/chromatograms/mk8059_a01.zip

Restriction Sites:

SgfI-MluI

Cloning Scheme:


ACCN: NM_001135553

ORF Size: 1272 bp

OTI Disclaimer: The molecular sequence of this clone aligns with the gene accession number as a point of reference only. However, individual transcript sequences of the same gene can differ through naturally occurring variations (e.g. polymorphisms), each with its own valid existence. This clone is substantially in agreement with the reference, but a complete review of all prevailing variants is recommended prior to use. [More info](#)

OTI Annotation: This clone was engineered to express the complete ORF with an expression tag. Expression varies depending on the nature of the gene.

Components: The ORF clone is ion-exchange column purified and shipped in a 2D barcoded Matrix tube containing 10ug of transfection-ready, dried plasmid DNA (reconstitute with 100 ul of water).

- Reconstitution Method:**
1. Centrifuge at 5,000xg for 5min.
 2. Carefully open the tube and add 100ul of sterile water to dissolve the DNA.
 3. Close the tube and incubate for 10 minutes at room temperature.
 4. Briefly vortex the tube and then do a quick spin (less than 5000xg) to concentrate the liquid at the bottom.
 5. Store the suspended plasmid at -20°C. The DNA is stable for at least one year from date of shipping when stored at -20°C.

RefSeq: [NM_001135553.2](#), [NP_001129025.1](#)

RefSeq ORF: 1239 bp

Locus ID: 8569

UniProt ID: [Q9BUB5](#)

Cytogenetics: 1p33

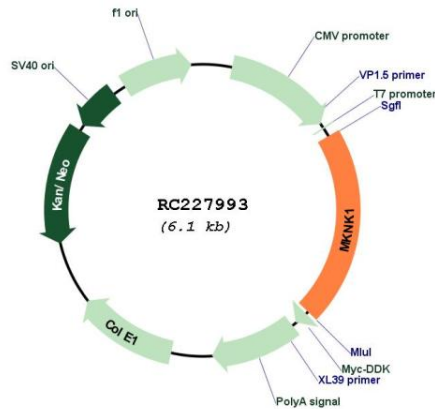
Protein Families: Druggable Genome, Protein Kinase

Protein Pathways: Insulin signaling pathway, MAPK signaling pathway

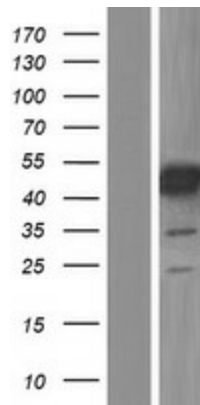
MW: 47.2 kDa

Gene Summary: This gene encodes a Ser/Thr protein kinase that interacts with, and is activated by ERK1 and p38 mitogen-activated protein kinases, and thus may play a role in the response to environmental stress and cytokines. This kinase may also regulate transcription by phosphorylating eIF4E via interaction with the C-terminal region of eIF4G. Alternatively spliced transcript variants have been noted for this gene. [provided by RefSeq, Jan 2012]

Product images:



Circular map for RC227993



Western blot validation of overexpression lysate (Cat# [LY427613]) using anti-DDK antibody (Cat# [TA50011-100]). Left: Cell lysates from untransfected HEK293T cells; Right: Cell lysates from HEK293T cells transfected with RC227993 using transfection reagent MegaTran 2.0 (Cat# [TT210002]).