

## Product datasheet for **RC227981**

### **NELL2 (NM\_001145110) Human Tagged ORF Clone**

#### **Product data:**

Product Type:	Expression Plasmids
Product Name:	NELL2 (NM_001145110) Human Tagged ORF Clone
Tag:	Myc-DDK
Symbol:	NELL2
Synonyms:	NRP2
Mammalian Cell Selection:	Neomycin
Vector:	pCMV6-Entry (PS100001)
E. coli Selection:	Kanamycin (25 ug/mL)



[View online »](#)

ORF Nucleotide  
Sequence:

>RC227981 representing NM\_001145110  
 Red=Cloning site Blue=ORF Green=Tags(s)

TTTTGTAATACGACTCACTATAGGGCGGCCGGAATTCGTCGACTGGATCCGGTACCGAGGAGATCTGCC  
 GCC**CGCATCGCC**

ATGTCTATAAGAAGACTTCTCATTTTAATCCTCAAATAGGGAGACGATGGACTGAGCTGATCCGCACCA  
 TGGAGTCTCGGGTCTTACTGAGAACATTCTGTTTGATCTTCGGTCTCGGAGCAGTTTGGGGCTTGGTGT  
 GGACCTTCCCTACAGATTGACGTCTTAACAGAGTTAGAACTTGGGGAGTCCACGACCGGAGTGCCTCAG  
 GTCCCGGGGCTGCATAATGGGACGAAAGCCTTTCTCTTCAAGATACTCCAGAAGCATAAAAGCATCCA  
 CTGCTACAGCTGAACAGTTTTTTCAGAAGCTGAGAAATAAACATGAATTTACTATTTTGGTGACCCTAAA  
 ACAGACCCACTTAAATTCAGGAGTTATTCTCTCAATTCACCACTTGGATCACAGGTACCTGGAACGTGAA  
 AGTAGTGGCCATCGAATGAAGTCAGACTGCATTACCGCTCAGGCAGTACCGCCCTCACACAGAAGTGT  
 TTCCTTACATTTTGGCTGATGACAAGTGGCACAAGCTCTCCTTAGCCATCAGTGCCTCCATTTGATTTT  
 ACACATTGACTGCAATAAAATTTATGAAAGGGTAGTAGAAAAGCCCTCCACAGACTTGCCTCTAGGCACA  
 ACATTTTGGCTAGGACAGAGAAAATATGCGCATGGATATTTTAAGGGTATAATGCAAGATGTCCAATTAC  
 TTGTCATGCCCCAGGGATTTATTGCTCAGTGCCAGATCTTAATCGCACCTGTCCAACCTGCAATGACTT  
 CCATGGACTTGTGCAGAAAATCATGGAGCTACAGGATATTTTAGCCAAAACATCAGCCAAGCTGTCTCGA  
 GCTGAACAGCGAATGAATAGATTGGATCAGTGCTATTGTGAAAGGACTTGCAACATGAAGGGAACCCCT  
 ACCGAGAATTTGAGTCTGGATAGACGGCTGTAAGAACTGCACATGCCTGAATGGAACCATCCAGTGTGA  
 AACTCTAATCTGCCCAAATCCTGACTGCCACTTAAGTCGGCTCTTGGTATGTGGATGGCAAATGCTGT  
 AAGGAATGCAAATCGATATGCCAATTTCAAGGACGAACCTACTTTGAAGGAGAAAAGAAATACAGTCTATT  
 CCTCTTGGAGTATGTGTTCTCTATGAGTGCAAGGACCAACCATGAAACTTGTGGAGTTCAGGCTG  
 TCCAGCTTTGGATTGTCCAGAGTCTCATCAGATAACCTTGTCTCACAGCTGTTGCAAAGTTTGTAAAGGT  
 TATGACTTTTGTCTGAAAGGCATAACTGCATGGAGAATTCATCTGCAGAAATCTGAATGACAGGGCTG  
 TTTGTAGCTGTCGAGATGGTTTTAGGGCTCTTCGAGAGGATAATGCCTACTGTGAAGACATCGATGAGTG  
 TGCTGAAGGGCGCCATTACTGTCGTGAAAATACAATGTGTGTCAACACCCCGGGTCTTTTATGTGCATC  
 TGCAAACTGGATACATCAGAATTGATGATTATTCATGTACAGAACATGATGAGTGTATCACAATCAGC  
 ACAACTGTGATGAAAATGCTTTATGCTTCAACACTGTTGGAGGACACAACCTGTGTTTGAAGCCGGGCTA  
 TACAGGGAATGGAACGACATGCAAAGCATTGCAAAGATGGCTGTAGGAATGGAGGAGCCTGTATTGCC  
 GCTAATGTGTGCTGCCACAAGGCTTCACTGGACCCAGCTGTGAAACGGACATTGATGAATGCTCTG  
 ATGGTTTTGTTCAATGTGACAGTCGTGTAATTGCATTAACTGCCTGGATGGTACCCTGTGAGTGCAG  
 AGATGGCTACCATGACAATGGGATGTTTTACCAAGTGGAGAATCGTGTGAAGATATTGATGAGTGTGGG  
 ACCGGGAGGCACAGCTGTGCCAATGATACCATTGCTTCAATTTGGATGGCGGATATGATTGTGCATGTC  
 CTCATGGAAGAATTGCACAGGGGACTGCATCCATGATGGAAAAGTTAAGCACAATGGTCAGATTTGGGT  
 GTTGGAAAATGACAGGTGCTCTGTGTGCTCATGTGAGAATGGATTCGTTATGTGTGACGGATGGTCTGT  
 GACTGTGAGAAATCCACAGTTGATCTTTTTGCTGCCCTGAATGTGACCCAAGGCTTAGTAGTCAGTGCC  
 TCCATCAAATGGGGAACCTTTGTATAACAGTGGTGACACCTGGGTCCAGAATTGTCAACAGTCCCGCTG  
 CTTGCAAGGGGAAGTTGATTGTTGGCCCTGCCTTGCCAGATGTGGAGTGTGAATTCAGCATTCTCCCA  
 GAGAATGAGTGTGCCCGCTGTGTACAGACCCTTGCCAGGCTGACACCATCCGCAATGACATCACCA  
 AGACTTGCTGGACGAAATGAATGTGGTTCGCTTACCAGGCTCCTTGGATCAAACATGCCACTGAGTG  
 TACTCTCTGCCAGTGCAAGAATGGCCACATCTGTTGCTCAGTGGATCCACAGTGCCTTCAGGAAGT

**ACGCGT**ACGCGGCCGCTCGAGCAGAACTCATCTCAGAAGAGGATCTGGCAGCAAATGATATCCTGGATT  
 ACAAGGATGACGACGATAAGGTTTAA

**Protein Sequence:** >RC227981 representing NM\_001145110  
Red=Cloning site Green=Tags(s)

MSIRRLILILKIGRRWTELIRTMESRVLLRTFCLIFGLGAVWGLGVDPSLQIDVLELELGESTTGVRQ  
VPGLHNGTKAFLFQDTPRSIKASTATAEQFFQKLRNKHEFTILVTLKQTHLNSGVLSIHHLDRYLELE  
SSGHRNEVRLHYRSGSHRPHTVEFPYILADDKWHKLSLAISASHLILHIDCNKIYERVVEKPSTDLPLGT  
TFWLQORNNAHGYFKGIMQDVQLLVMPQGFIAQCPDLNRTCPTCNDFHGLVQKIMELQDILAKTSAKLSR  
AEQRMNRLDQCYCERTCTMKGTTYREFESWIDGCKNCTCLNGTIQCETLICPNPDCPLKSALAYVDGKCC  
KECKSICQFQGRTYFEGERNVYSSSGVCVLYECKDQTMKLVESGCPALDCPESHQITLSHSCCKVCKG  
YDFCSERHNCMENSICRNLNDRAVCSRDGFRALREDNAYCEDIDECAEGRHYCRENTMCVNTPGSFMCI  
CKTGYIRIDDYSCTEHDECITNQHNCDENALCFNTVGGHNCVCKPGYTGNGTTCFAFKDGCRRNGGACIA  
ANVCACPQGF TGPSCETDIDECSDFVQCD SRANCINLPGWYHCECRDGYHDNGMFSPSGESCEDIDEC  
TGRHSCANDTICFNLDGGYDCRCPHGKNTGDCIHDGKVKHNGQIWWLENDRCVSCQNGFVMCRRMVC  
DCENPTVDLFCPECDPRLSSQCLHQNGETLYNSGDTWVQNCQQCRCLQGEVDCWPLPCPDVECEFSILP  
ENECCPRCVTDPCQADTIRNDITKTCLDEMNVVRF TGSSWIKHGTECTLCQCKNGHICCSVDPQCLQEL

TRTRPLEQKLI SEEDLAANDILDYKDDDDKV

**Chromatograms:** [https://cdn.origene.com/chromatograms/mk8006\\_g04.zip](https://cdn.origene.com/chromatograms/mk8006_g04.zip)

**Restriction Sites:** SgfI-MluI

Cloning Scheme:



ACCN: NM\_001145110

ORF Size: 2517 bp

OTI Disclaimer: The molecular sequence of this clone aligns with the gene accession number as a point of reference only. However, individual transcript sequences of the same gene can differ through naturally occurring variations (e.g. polymorphisms), each with its own valid existence. This clone is substantially in agreement with the reference, but a complete review of all prevailing variants is recommended prior to use. [More info](#)

OTI Annotation: This clone was engineered to express the complete ORF with an expression tag. Expression varies depending on the nature of the gene.

Components: The ORF clone is ion-exchange column purified and shipped in a 2D barcoded Matrix tube containing 10ug of transfection-ready, dried plasmid DNA (reconstitute with 100 ul of water).

**Reconstitution Method:**

1. Centrifuge at 5,000xg for 5min.
2. Carefully open the tube and add 100ul of sterile water to dissolve the DNA.
3. Close the tube and incubate for 10 minutes at room temperature.
4. Briefly vortex the tube and then do a quick spin (less than 5000xg) to concentrate the liquid at the bottom.
5. Store the suspended plasmid at -20°C. The DNA is stable for at least one year from date of shipping when stored at -20°C.

**RefSeq:** [NM\\_001145110.1](#), [NP\\_001138582.1](#)

**RefSeq ORF:** 2520 bp

**Locus ID:** 4753

**UniProt ID:** [Q99435](#)

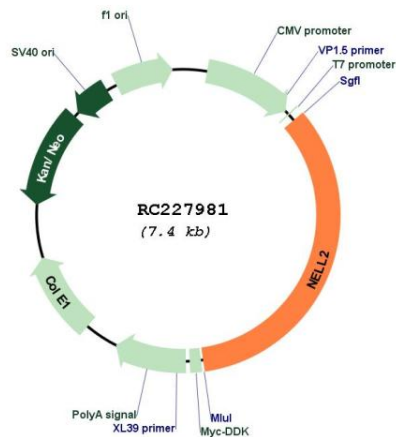
**Cytogenetics:** 12q12

**Protein Families:** Secreted Protein, Transmembrane

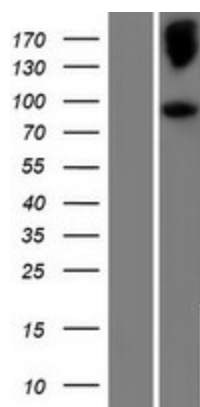
**MW:** 94 kDa

**Gene Summary:** The protein encoded by this gene is a glycoprotein containing several von Willebrand factor C domains and epidermal growth factor (EGF)-like domains. The encoded protein acts as a homotrimer and is found in the cytoplasm. Several variants encoding a few different isoforms exist, and at least one isoform appears to be a secreted protein. Studies in mouse suggest that this protein plays a role in neural cell growth and differentiation as well as in oncogenesis. [provided by RefSeq, Feb 2009]

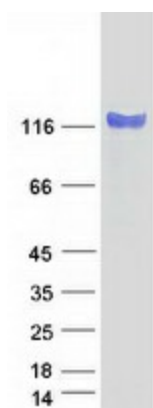
## Product images:



Circular map for RC227981



Western blot validation of overexpression lysate (Cat# [LY428697]) using anti-DDK antibody (Cat# [TA50011-100]). Left: Cell lysates from untransfected HEK293T cells; Right: Cell lysates from HEK293T cells transfected with RC227981 using transfection reagent MegaTran 2.0 (Cat# [TT210002]).



Coomassie blue staining of purified NELL2 protein (Cat# [TP327981]). The protein was produced from HEK293T cells transfected with NELL2 cDNA clone (Cat# RC227981) using MegaTran 2.0 (Cat# [TT210002]).