

Product datasheet for **RC227933**

PLS1 (NM_001145319) Human Tagged ORF Clone

Product data:

Product Type:	Expression Plasmids
Product Name:	PLS1 (NM_001145319) Human Tagged ORF Clone
Tag:	Myc-DDK
Symbol:	PLS1
Synonyms:	DFNA76
Mammalian Cell Selection:	Neomycin
Vector:	pCMV6-Entry (PS100001)
E. coli Selection:	Kanamycin (25 ug/mL)



[View online »](#)

ORF Nucleotide Sequence:

>RC227933 ORF sequence
 Red=Cloning site Blue=ORF Green=Tags(s)

TTTTGTAATACGACTCACTATAGGGCGGCCGGAATTCGTCGACTGGATCCGGTACCGAGGAGATCTGCC
 GCCCGCATCGCC

ATGAAAAACAGTACTACTACCATTCTCGGGAGGAGCTTGAAGAACTACAAGAGGCATTTAATAAATAG
 ATATTGACAATAGTGGGTATGTCAGTGACTATGAACTTCAAGACCTGTTTAAGGAAGCAAGCCTTCTCT
 GCCTGGCTACAAGGTGCGGAGATTGTGGAGAAAATTCTATCAGTTGCTGACAGCAACAAAGATGGCAAA
 ATCAGTTTTGAAGAGTTTGTGCTACTAATGCAAGAATTAAGCAAGATATCAGCAAAACATTCGGAA
 AAATAATTAACAAGAGGGAAGGGATTACTGCTATTGGAGGAACTCAACTATTTCCAGTGAGGGCACACA
 GCATTCTTACTCAGAGGAAGAAAAGTGGCTTTTGTAACTGGATAAACAAAGCCCTGGAGAATGACCT
 GACTGTAAGCATTTATACCCATGAATCCCAATGATGATAGTCTTTTCAAGTCACTTGCAGATGGCATCC
 TTCTTTGCAAAAATGATCAACTTATCTGAACCAGATACAATTGATGAAAGAGCCATCAATAAGAAAAAGCT
 CACGCCATTCATTTCTGAAAATTTAAACCTAGCTCTGAATTCTGCCTCAGCCATTGGTTGTACAGTG
 GTC AACATTGGTGCATCAGATCTCAAAGAAGGAAAACCTCACTTGGTCTTGGGACTTCTCTGGCAGATCA
 TCAAAGTTGGCCTTTTTGCTGATATTGAGATTTCCAGGAATGAAGCTCTGATTGCATTGTTAAATGAAGG
 TGAGGAACTAGAGGAGCTGATGAAGCTTCTCCCGAGGAATTAAGTCTGCGATGGGTGAAGTACCATCTG
 ACCAATGCAGGATGGCATACCATCAGCAACTTCAGCCAAGACATTAAGGACTCGAGAGCCTATTTTCATC
 TGCTTAATCAGATTGCCCTAAAGGTGGGAAGATGGACCTGCCATTGCCATTGACCTTTTCAGGAATTA
 TGAGACAAATGACCTGAAGCGTGTGGACTCATGCTTCAAGAAGCAGATAAACTGGGCTGCAACAGTTT
 GTTACTCCTGCAGATGTGGTTTCAGGCAATCCTAACTTAATTTAGCTTTTGTAGCTAATTTGTTTAAACA
 CATACCCATGCCGCACAAGCCGAATAAATGACATCGATATGAATTTACTGGAAGGAGAGAGCAAGGA
 AGAGAGAACATTTGGAAGTGGATGAATTCCTTGGGAGTCAACCCATACATTAATCATTTGTACAGTGAC
 CTTGCAGATGCTTTAGTGATCTTTCAGCTCTATGAGATGATCCGAGTGCCAGTCAACTGGAGACATGTCA
 ACAAACCTCCTTATCCTGCCCTTGGAGGGAACATGAAGAAGATTGAAAACCTGTAAGTATGCAGTGGAACT
 TGGGAAGAACAAGGCCAAATTCTCCTTGGTTGGCATTGCTGGGCAGGACCTAAATGAAGGGAATTCACCA
 CTTACCCTGGCATTGGTATGGCAGCTGATGAGAAGGTACACATTGAATGTGTTATCGGATCTTGGAGAGG
 GTGAAAAAGTAAATGATGAAATTATAATTAATGGGTCAATCAGACTCTAAAAGTGCAACAAAAAGAC
 TTCTATTTCCAGCTTCAAGGATAAATCTATAAGCACAAAGTTACCTGCTCAGATTTAATAGATGCCATT
 GCACCAAAATGCAGTTTCGCAAGAAATGATCAGGAGAGAAAACCTATCTGATGAGGACAAGCTGAACAAATG
 CTAATAACGCCATTTAGTTGCTCGAAAGATCGGTGCCCGGATATATGCATTACCTGATGACCTCGTAGA
 AGTGAAACCAAGATGGTTATGACGGTGTTCATGCTTAATGGGAAAAGGACTGAACAGAATAAAA

ACGCGTACGCGGCCGCTCGAGCAGAACTCATCTCAGAAGAGGATCTGGCAGCAATGATATCCTGGATT
 ACAAGGATGACGACGATAAGGTTTAA

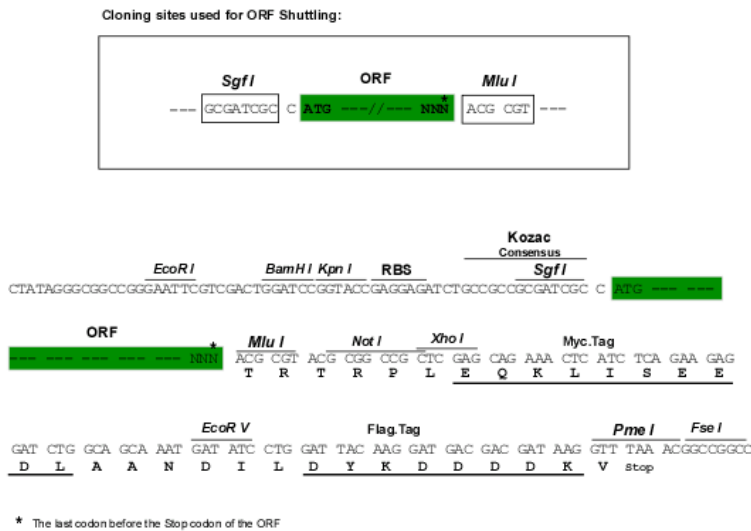
Protein Sequence:

>RC227933 protein sequence
 Red=Cloning site Green=Tags(s)

MENSTTTISRLEEELQEAFNKIDIDNSGYVSDYELQDLFKEASLPLPGYKVIIVEKILSVADSNKDGK
 ISFEFVSLMQELKSKDISKTFRKIINKREGITAIIGGTSTISSEGTQHSYSEEEKVAFVNWINKALENDP
 DCKHLIPMNPNDLSLFLKSLADGILLCKMINLSEPTIDERAINKKKLTPFTISENLNLALNSASAI GCTV
 VNI GASDLKEGPHLVGLLWQI IKVGLFADIEISRNEALIALNEGEELEELMKLSPEELLLRWVNYHL
 TNAGWHTISNFSQDIKDSRAYFHLLNQIAPKGGEDGPAIAIDL SGINETNDLKRAGLMLQEADKLGCKQF
 VTPADV VSGNPKLNLAFLV ANLFNTY PCLHKPNNNDIDMNLLEGESKEERTFRNWMMNSLGVNPIINHLYSD
 LADALVIFQLYEMIRVPVNRHV NKPYPALGGNMKKIENCNYAVELGKNKAKFSLVGIAGQDLNEGNST
 LTLALVWQLMRRYTLNVLSDLGEGEKVND EIIKWNQTLKSANKKTSISSFKDKSISTSLPVLDLIDAI
 APNAVRQEMIRRENLSDEDKLNNAKYAISVARKIGARIYALPDDLVEVKPKMVMVFACL MGKGLNRK

TRTRPLEQKLI SEEDLAANDILDYKDDDDKV

Chromatograms: https://cdn.origene.com/chromatograms/mk6320_h09.zip
 Restriction Sites: SgfI-MluI
 Cloning Scheme:



ACCN: NM_001145319

ORF Size: 1887 bp

OTI Disclaimer: The molecular sequence of this clone aligns with the gene accession number as a point of reference only. However, individual transcript sequences of the same gene can differ through naturally occurring variations (e.g. polymorphisms), each with its own valid existence. This clone is substantially in agreement with the reference, but a complete review of all prevailing variants is recommended prior to use. [More info](#)

OTI Annotation: This clone was engineered to express the complete ORF with an expression tag. Expression varies depending on the nature of the gene.

Components: The ORF clone is ion-exchange column purified and shipped in a 2D barcoded Matrix tube containing 10ug of transfection-ready, dried plasmid DNA (reconstitute with 100 ul of water).

Reconstitution Method: 1. Centrifuge at 5,000xg for 5min.
 2. Carefully open the tube and add 100ul of sterile water to dissolve the DNA.
 3. Close the tube and incubate for 10 minutes at room temperature.
 4. Briefly vortex the tube and then do a quick spin (less than 5000xg) to concentrate the liquid at the bottom.
 5. Store the suspended plasmid at -20°C. The DNA is stable for at least one year from date of shipping when stored at -20°C.

RefSeq: [NM_001145319.1](#), [NP_001138791.1](#)

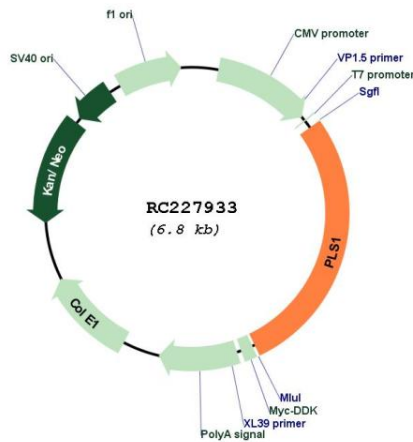
RefSeq Size: 3720 bp

RefSeq ORF: 1890 bp

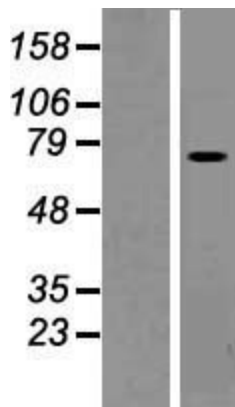
Locus ID: 5357
 UniProt ID: [Q14651](#)
 Cytogenetics: 3q23
 MW: 70.3 kDa

Gene Summary: Plastins are a family of actin-binding proteins that are conserved throughout eukaryote evolution and expressed in most tissues of higher eukaryotes. In humans, two ubiquitous plastin isoforms (L and T) have been identified. The protein encoded by this gene is a third distinct plastin isoform, which is specifically expressed at high levels in the small intestine. Alternatively spliced transcript variants varying in the 5' UTR, but encoding the same protein, have been found for this gene. A pseudogene of this gene is found on chromosome 11. [provided by RefSeq, Feb 2010]

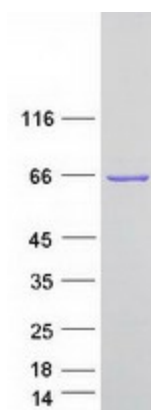
Product images:



Circular map for RC227933



Western blot validation of overexpression lysate (Cat# [LY428822]) using anti-DDK antibody (Cat# [TA50011-100]). Left: Cell lysates from untransfected HEK293T cells; Right: Cell lysates from HEK293T cells transfected with RC227933 using transfection reagent MegaTran 2.0 (Cat# [TT210002]).



Coomassie blue staining of purified PLS1 protein (Cat# [TP327933]). The protein was produced from HEK293T cells transfected with PLS1 cDNA clone (Cat# RC227933) using MegaTran 2.0 (Cat# [TT210002]).