

Product datasheet for RC227932

CASKIN2 (NM_001142643) Human Tagged ORF Clone

Product data:

Product Type:	Expression Plasmids
Product Name:	CASKIN2 (NM_001142643) Human Tagged ORF Clone
Tag:	Myc-DDK
Symbol:	CASKIN2
Synonyms:	ANKS5B
Mammalian Cell Selection:	Neomycin
Vector:	pCMV6-Entry (PS100001)
E. coli Selection:	Kanamycin (25 ug/mL)
ORF Nucleotide Sequence:	>RC227932 representing NM_001142643 Red=Cloning site Blue=ORF Green=Tags(s)

TTTTGTAATACGACTCACTATAGGGCGCCGGGAATTCGTCGACTGGATCCGGTACCGAGGAGATCTGCC
GCC**CGATCGCC**

ATGCGCCCGCTGCACTACGCAGCCTGGCAGGGCCGGCTGGAGCCTGTGAGGCTGCTGCTGCGCGCCTCTG
CGGCTGTCAATGCCGCCTCGCTGGACGGACAGATCCCCCTGCACCTGGCTGCACAGTATGGACATTATGA
GGTGTGAGAAATGCTCCTCCAGCATCAGTCCAACCCATGCCTGGTCAACAAGGCCAAGAAGACGCCCTG
GACCTGGCCTGTGAATTTGGCCGACTCAAGGTGGCCAGCTGCTTCTGAACAGCCACTTATGTGTGGCAC
TGCTGGAGGGTGAGGCCAAGACCCGTGTGACCCCACTACACCAGCCCTGCACCTGGCTGCCAAGAA
TGCCACAGAGAAGTATCAGGCAGTCCCTGAGAGCTGGGATCGAGATCAACCGCCAGACCAAGACGGGT
ACGGCGCTCCACGAGGCCGCACTGTATGGCAAGACCGAGGTGGTGGCGCTGCTTCTGGAGGGAGGTGTGG
ACGTGAACATCCGGAATACGTATAACCAGACGGCGCTGGACATAGTGAATCAGTTCACCACCTCCCAGGC
CAGCCGGGAAATCAAGCAGCTACTGCGGGAGGCCCTCAGGGATCCTGAAGGTCCGAGCGCTCAAGGATTT
TGGAACCTCCACGATCCCACTGCTCTCAATGTCCGGCAGGGGATGTATCACGGTGTAGAACAGCATC
CCGACGGCCGCTGGAAGGGCCACATCCACGAGAGCCAGAGGGGCACAGACCCGATAGGCTACTTCCCCC
GGGCATTGTGAGGTGGTCAGCAAGCGGGTGGGCATCCCTGCAGCCCGCCTCCCCCGCACCCACCCCC
CTGCGCCAGGCTTCTCCCGACACCGCAGCCTCCTGCCGAAGAACCCTCCGACCCCTTACCTACAGCC
AGCTTCCCTCGGGTGGGCCTCAGCCAGACAGCCAGCAGGTGACAGGAATAGTGTGGCAGTGAGGGCAG
CGTGGGCAGCATCCGCAGTGCCGCGAGCGGCAGAGCTCTGAGGGCACTAATGGCCATGGCCCTGGCCTC
CTGATTGAGAACGCCAGCCACTGCCCTCTGCTGGAGAGGACCAGGTGCTGCCAGGACTCCACCCGCCGT
CCCTGGCAGACAACCTGAGCCACCGCCCTCTGGCCAACCTGCCGCTCTGGGGAGCAGATCTTACCCAGGA
CGTGGCGCCAGAACAGCTGCTGGAGGGGAAGGACGCGCAGGCCATTATAACTGGCTAAGCGAGTTCAG
CTGGAGGGCTACTGCCCCTTCTGCAGGCCGGCTATGATGTGCCTACCATCAGCCGATGACACCTG
AGGACCTGACGGCCATCGGGGTACCAAGCCTGGGCACAGGAAGAAGATCGCCTCAGAGATCGCTCAGCT
CAGCATCGCCGAGTGGCTGCCAGCTACATCCCAACGGACCTGCTGGAGTGGCTGTGTGACTGGGGCTG



[View online »](#)

CCACAGTACCACAAGCAGCTGGT GAGCAGCGGCTACGACTCCATGGGGCTGGTGGCCGACCTCACCTGGG
 AGGAGTGCAGGAGATTGGGGTCAACAAGCTCGGGCATCAGAAGAAGCTCATGCTGGGGGTGAAGCGGCT
 GGCGGAGCTTCGGCGGGGCTGCTGCAGGGGGAGGCCCTCAGCGAAGGCGGGCGCCGGCTGGCCAAGGGT
 CCGGAGCTGATGGCCATCGAGGGACTGGAGAACGGAGAAGGCCAGCTACAGCTGGCCCACGGCTCCTCA
 CCTTCCAGGGCAGCGAACTAAGCCAGAGCTACAGGCGGCCATGGCAGGGGGTGGCCTGAACCACTCCC
 CCTCCCACCTGCCCGCTCTCCAGCCAGGAGAGCATCGGGGACGCTCACGGGGTCTGGCCACTCACAG
 GAACAGCTGCCCCACAGCCCCAGCGGTGGAGATCCCAGCCCCCCCCAGGAGAGAACTCCCAGAGGGCA
 CAGAGCGGCCCCCTAAGCTTTGTTCTTCACTTCTGGCCAAGGACCCCACTATGTTTTTATGTACCC
 CCAGGGCTCACCTCTAGCCCGGCCAGGGCCACTCCTGGCGCACCTGGGCCTTCTCTACTTGGCC
 GGGCCCCCTGCCACTCCCCAGACCCGCTCGACCTAAGCGCCGGTCCCACAGCCTAAGCCGCCCTGGCC
 CCACAGAGGGGATGCTGAGGGGAGGCCGAAGGGCCAGTGGCAGCACCTAGGCAGTTATGCTACCTT
 TACCCGGCGCCAGGACGAGTGCCTTGTCCGGACCAGTCTAGTGTGACCCCAACCCAGCTCGGGG
 ACTCTCGCAGCAGTCTTTGCCCTGCGGGCCCGCGCAAGGCCCCCGCCCCGCCCCCAAGCGCC
 TCAGCTCCGTCTCTGGCCCAGCCGGAGCCACTCCACTAGATGAGAGCCAGGGCCCAAGGAAGGGG
 CACAGGGCCCCGAAGGCCAACACTGAGTGAACCTGCTGGCCCTCAGAGCCCCCTGGCCACTGCCCG
 GCTGGGCCCGCTCAGACACGGAGGAGGAGGCCAGGCCCTGAGGGGACGCCCCATCTCGGGGAGCT
 CTGGGGAAGGGTGCCTTTGCAGAGGAAGGAACTGACCATCAACAGCGCCCGAAGCCCGCTGGCCC
 CCCGCCCGAGAGACACCCGTGCCCCCGGCTCGATTTCAACCTCACGGAATCAGACACTGTTAAGCGG
 AGGCCCAAGTGCCGGGAGAGAGCCACTGCAGACCGCACTGCTGGCCTTCGGAGTGGCCAGTGCCACGC
 CTGGCCCCGCTGCCCACTGCCTTCCCCAACTCCTGGCGAGTCTCCTCCAGCTTCTAGCCTTCCCAGCC
 CGAGCCCAGCAGCCTTCCAGCCAAGGAGTTCCAACCCCTTGTCCCAGCCCCGCATGCAGCCTCCA
 GTGCCGCCCTGCCAGGGCCAGGTCTGAAAGCTCAGCAGCTAGTCGGTGAATGGGAGACAGAACCC
 CGGCCGCCCTGCTGCCCTCCTCAAGTGCCCGGAGCAGGAACAGCCCCAAGCCTGTGTGGTGGCCTG
 CACCCAGCTGGCATTCTGCCCCAAGCTAGCGCCCGGCTCGGCCCGCCAGTGCCTCCTCCACGG
 CCTGAGAGCACTGGGACTGTGGGCCAGGCCAGGCCAGCAGAGACTGGAGCAGACCAGCTCGTCCCTGG
 CAGCTGCACTGAGAGCCGAGAGAAGAGCATTGGCACCAAGGAGCAAGAGGGCACCCCGCCCTCCAC
 CAAGCACATTCTGGATGACATCAGCACCATGTTGACGCCCTGGCTGACCAGCTGGACGCCATGCTGGAC

ACGCGTACGCGGCCGCTCGAGCAGAACTCATCTCAGAAGAGGATCTGGCAGCAATGATATCCTGGATT
 ACAAGGATGACGACGATAAGGTTTAA

Protein Sequence:

>RC227932 representing NM_001142643
 Red=Cloning site Green=Tags(s)

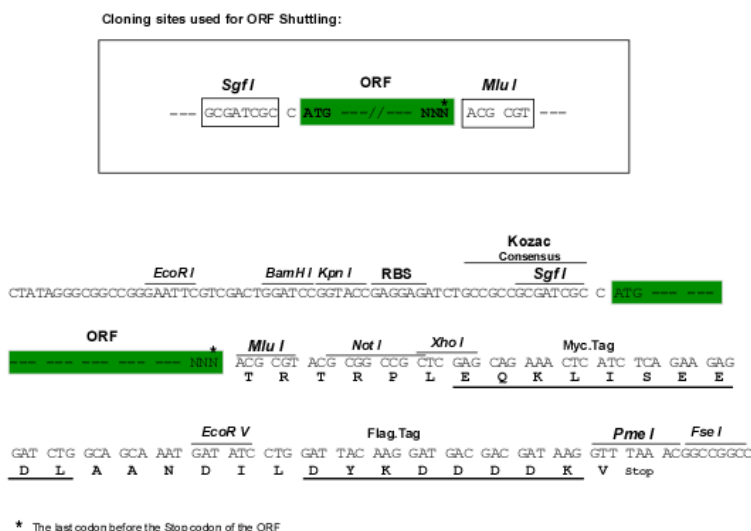
MRPLHYAAWQGRLEPVRLLLRASAANAASLDGQIPLHLAAQYGHYEVSEMLLQHNSNPCLVNAKKTPL
 DLACEFGRQKVAQLLLNSHLCVALLLEGEAKDPCDPNYTTPHLAAKNGHREVIRQLLRAGIEINRQTKTG
 TALHEAALYGKTEVVRLLEGGVDVNIINTYNQALDIVNQFTTSQASREIKQLLREASGILKVRALKDF
 WNLHDPTALNVRAGDVITVLEQHPDGRWKGHIHESQRGTDRIYFPPGIVEVSKRVGIPAARLPSAPTP
 LRPGFSRTPQPPAEPHPLTYSQLPRVGLSPDSPAGDRNSVSGSESVGSIRSAGSGQSSEGTNGHGPGL
 LIENAQPLPSAGEDQVLPGLHPPSLADNLSHRPLANCRSGEQIFTQDVRPEQLLEGGKDAQAIHNWLSEFQ
 LEGYTAHFLQAGYDVPTISRMTPEDLTAIGVTKPGRKKIASEIAQLSIAEWLPSYIPTDLLEWLCALGL
 PQYHKQLVSSGYDSMGLVADLTWEELQEIGVNLKLGHQKMLGVKRLAELRRGLLQGEALSEGRRRLAKG
 PELMAIEGLENGEGPATAGPRLTFQGSSELSPELQAAMAGGGPEPLPLPPARSPQESIGARSRGSQHSQ
 EQPAPQPSGGDPSPQERNLPEGTERPPKLCSSLPQGPPPYVFMYPQGSPPAPGPPPGAPWAFSYLA
 GPPATPPDPPRKRSHSLSRPGTEGDAEAGEAEGPVGSTLGSYATLTRRPGRSALVRTSPSVTPTPARG
 TPRSQSFALRARRKGPPIPPKRLSSVSGSPPEPPPLDESPGKEGATGPRRRTLSEAPGSEPPGPPAP
 AGPASDTEEEEPGEGTPPSRGSSEGLPFAEEGNLTIKQRPKAGPPPRETPVPPGLDFNLTESDVKR
 RPKCREREPLQTALLAFGVASATPGPAAPLPSPTPGESPASSLPQPEPSSLPAQGVPTPLAPSPAMQPP
 VPPCPGPLESSAASRWGETEPPAAPAALLKVPAGTAPKPVSVACTQLAFSGPKLAPRLGPRVPPPR
 PESTGTGPGQAQQRLEQTSSSLAAALRAAEKISIGTKEQEGTPSASTKHILDDISTMFDALADQLDAML

TRTRPLEQKLISEEDLAANDILDYKDDDDKV

Chromatograms: https://cdn.origene.com/chromatograms/mk8100_g10.zip

Restriction Sites: SgfI-MluI

Cloning Scheme:



ACCN: NM_001142643

ORF Size: 3360 bp

OTI Disclaimer: The molecular sequence of this clone aligns with the gene accession number as a point of reference only. However, individual transcript sequences of the same gene can differ through naturally occurring variations (e.g. polymorphisms), each with its own valid existence. This clone is substantially in agreement with the reference, but a complete review of all prevailing variants is recommended prior to use. [More info](#)

OTI Annotation: This clone was engineered to express the complete ORF with an expression tag. Expression varies depending on the nature of the gene.

Components: The ORF clone is ion-exchange column purified and shipped in a 2D barcoded Matrix tube containing 10ug of transfection-ready, dried plasmid DNA (reconstitute with 100 ul of water).

Reconstitution Method:

1. Centrifuge at 5,000xg for 5min.
2. Carefully open the tube and add 100ul of sterile water to dissolve the DNA.
3. Close the tube and incubate for 10 minutes at room temperature.
4. Briefly vortex the tube and then do a quick spin (less than 5000xg) to concentrate the liquid at the bottom.
5. Store the suspended plasmid at -20°C. The DNA is stable for at least one year from date of shipping when stored at -20°C.

RefSeq: [NM_001142643.3](#)

RefSeq Size: 4514 bp

RefSeq ORF: 3363 bp

Locus ID: 57513

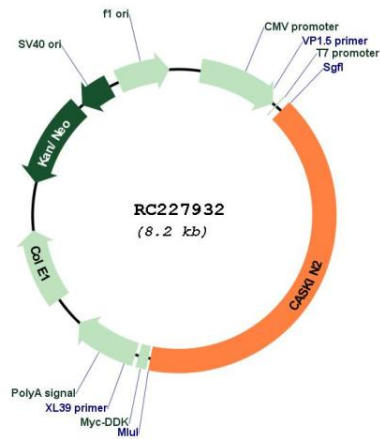
UniProt ID: [Q8WXE0](#)

Cytogenetics: 17q25.1

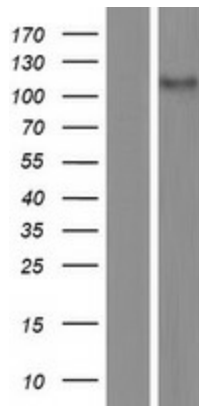
MW: 118.2 kDa

Gene Summary: This gene encodes a large protein that contains six ankyrin repeats, as well as a Src homology 3 (SH3) domain and two sterile alpha motif (SAM) domains, which may be involved in protein-protein interactions. The C-terminal portion of this protein is proline-rich and contains a conserved region. A related protein interacts with calcium/calmodulin-dependent serine protein kinase (CASK). Alternative splicing results in multiple transcript variants. [provided by RefSeq, Mar 2013]

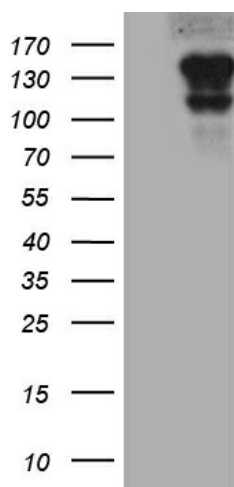
Product images:



Circular map for RC227932



Western blot validation of overexpression lysate (Cat# [LY428227]) using anti-DDK antibody (Cat# [TA50011-100]). Left: Cell lysates from untransfected HEK293T cells; Right: Cell lysates from HEK293T cells transfected with RC227932 using transfection reagent MegaTran 2.0 (Cat# [TT210002]).



HEK293T cells were transfected with the pCMV6-ENTRY control (Cat# [PS100001], Left lane) or pCMV6-ENTRY CASKIN2 (Cat# RC227932, Right lane) cDNA for 48 hrs and lysed. Equivalent amounts of cell lysates (5 ug per lane) were separated by SDS-PAGE and immunoblotted with anti-CASKIN2 (Cat# [TA812220])(1:2000).