

## Product datasheet for **RC227931**

### PCOTH (NM\_001135816) Human Tagged ORF Clone

#### Product data:

**Product Type:** Expression Plasmids  
**Product Name:** PCOTH (NM\_001135816) Human Tagged ORF Clone  
**Tag:** Myc-DDK  
**Symbol:** PCOTH  
**Synonyms:** C1QTNF9B-AS1  
**Mammalian Cell Selection:** Neomycin  
**Vector:** pCMV6-Entry (PS100001)  
**E. coli Selection:** Kanamycin (25 ug/mL)  
**ORF Nucleotide Sequence:** >RC227931 representing NM\_001135816  
Red=Cloning site Blue=ORF Green=Tags(s)

TTTTGTAATACGACTCACTATAGGGCGGCCGGAATTCGTCGACTGGATCCGGTACCGAGGAGATCTGCC  
GCC**CGATCGCC**

ATGCTGCCAGAGGCGCTGGTCTCAGAGCTCAGCATCTTATCAAATTTAATGGGCACATCTGAAGAAGGAA  
ACTTGCTCAGCACCGTGAGCCCCACAGTCAAAGCACTTTTGGCAAGACTAGAGTCTCACCGATTTTCCC  
TTTCTCTCCTCGATCTCCTTTCCAGCCTCTTATCCCCGGACTCCTGGCTCACCTGGGGCCCCGTGGGT  
CCAGCTTCTCCCTGGGACCAGGCTTTCCAATAGGGCCCATGGGGCCCGGTAACCAGTTGGGCCAAAG  
GCCCAATGTTGCCCTTGCCCTCAGGACCAGTGGGACCACGTCACCCTTATCCCTTCTGCCCC

**ACGCGT**ACGCGGCCGCTCGAGCAGAACTCATCTCAGAAGAGGATCTGGCAGCAAATGATATCCTGGATT  
ACAAGGATGACGACGATAAGGTTTAA

**Protein Sequence:** >RC227931 representing NM\_001135816  
Red=Cloning site Green=Tags(s)  
MLPEAWSSELTILSNLMGTSEEGNLLSTVSPTVKALFGKTRVSPIFPFSPRSPFQPLIPRTPGSPWGPVG  
PASPLGPGFPIGPMGPGKPVGPKGPMLPLGSPGVGPTSPLFPFCP

**TR**TRPLEQKLISEEDLAANDILDYKDDDDKV

**Chromatograms:** [https://cdn.origene.com/chromatograms/mk8037\\_d02.zip](https://cdn.origene.com/chromatograms/mk8037_d02.zip)

**Restriction Sites:** SgfI-MluI



[View online »](#)

Cloning Scheme:



ACCN: NM\_001135816

ORF Size: 348 bp

OTI Disclaimer: The molecular sequence of this clone aligns with the gene accession number as a point of reference only. However, individual transcript sequences of the same gene can differ through naturally occurring variations (e.g. polymorphisms), each with its own valid existence. This clone is substantially in agreement with the reference, but a complete review of all prevailing variants is recommended prior to use. [More info](#)

OTI Annotation: This clone was engineered to express the complete ORF with an expression tag. Expression varies depending on the nature of the gene.

Components: The ORF clone is ion-exchange column purified and shipped in a 2D barcoded Matrix tube containing 10ug of transfection-ready, dried plasmid DNA (reconstitute with 100 ul of water).

- Reconstitution Method:
1. Centrifuge at 5,000xg for 5min.
  2. Carefully open the tube and add 100ul of sterile water to dissolve the DNA.
  3. Close the tube and incubate for 10 minutes at room temperature.
  4. Briefly vortex the tube and then do a quick spin (less than 5000xg) to concentrate the liquid at the bottom.
  5. Store the suspended plasmid at -20°C. The DNA is stable for at least one year from date of shipping when stored at -20°C.

RefSeq: [NM\\_001135816.3](#)

RefSeq ORF: 351 bp

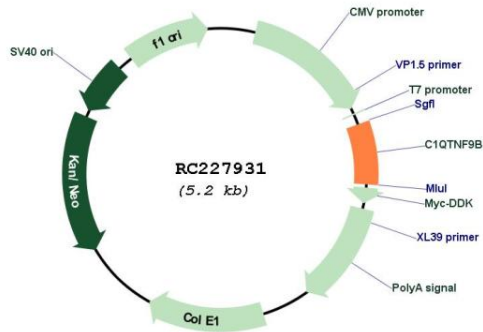
Locus ID: 542767

Cytogenetics: 13q12.12

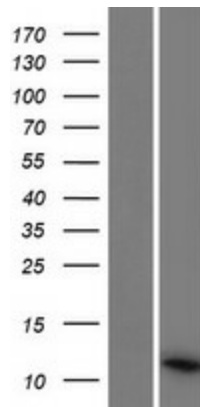
MW: 11.7 kDa

Gene Summary: May be involved in growth and survival of prostate cancer cells through the TAF-Ibeta pathway.[UniProtKB/Swiss-Prot Function]

**Product images:**



Circular map for RC227931



Western blot validation of overexpression lysate (Cat# [LY427714]) using anti-DDK antibody (Cat# [TA50011-100]). Left: Cell lysates from untransfected HEK293T cells; Right: Cell lysates from HEK293T cells transfected with RC227931 using transfection reagent MegaTran 2.0 (Cat# [TT210002]).