

## Product datasheet for **RC227927**

### CD133 (PROM1) (NM\_001145851) Human Tagged ORF Clone

#### Product data:

Product Type:	Expression Plasmids
Product Name:	CD133 (PROM1) (NM_001145851) Human Tagged ORF Clone
Tag:	Myc-DDK
Symbol:	CD133
Synonyms:	AC133; CD133; CORD12; MCDR2; MSTP061; PROML1; RP41; STGD4
Mammalian Cell Selection:	Neomycin
Vector:	pCMV6-Entry (PS100001)
E. coli Selection:	Kanamycin (25 ug/mL)



[View online »](#)

**ORF Nucleotide  
Sequence:**

>RC227927 representing NM\_001145851  
 Red=Cloning site Blue=ORF Green=Tags(s)

TTTTGTAATACGACTCACTATAGGGCGGCCGGAATTCGTCGACTGGATCCGGTACCGAGGAGATCTGCC  
 GCC**CGGATCGCC**

ATGGCCCTCGTACTCGGCTCCCTGTTGCTGCTGGGGCTGTGCGGAACTCCTTTTCAGGAGGCGAGCCTT  
 CATCCACAGATGCTCCTAAGGCTTGAATTATGAATTGCCTGCAACAAATTATGAGACCCAAAGACTCCCA  
 TAAAGCTGGACCCATTGGCATTCTCTTTGAACTAGTGCATATCTTTCTCTATGTGGTACAGCCGCGTGAT  
 TTCCAGAAAGATACTTTGAGAAAATTCTTACAGAAGGCATATGAATCCAAAATTGATTATGACAAGATTG  
 TCTACTATGAAGCAGGGATTATTCTATGCTGTGCTCTGGGGCTGCTGTTTATTATTCTGATGCCTCTGGT  
 GGGGTATTTCTTTGTATGTGTCGTTGCTGTAACAAATGTGGTGGAGAAATGCACCAGCGACAGAAGGAA  
 AATGGGCCCTTCCTGAGGAAATGCTTTGCAATCTCCCTGTTGGTGATTTGTATAATAAAGCATTGGCA  
 TCTTCTATGGTTTTGTGGCAAATCACCAGGTAAGAACCCGGATCAAAGGAGTCGGAAACTGGCAGATAG  
 CAATTTCAAGGACTTGCGAATCTCTTGAATGAACTCCAGAGCAAATCAAATATATATTGCCCCAGTAC  
 AACACTACCAAGGACAAGGCGTTCACAGATCTGAACAGTATCAATTCAGTCTAGGAGGCCGAATTCCTG  
 ACCGACTGAGACCCAACATCATCCCTGTTCTTGATGAGATTAAGTCCATGGCAACAGCGATCAAGGAGAC  
 CAAAGAGGCGTTGGAGAACATGAACAGCACCTTGAAGAGCTTGCACCAACAAAGTACACAGCTTAGCAGC  
 AGTCTGACCAGCGTGAAGACTAGCCTGCGGTATCTCTCAATGACCCTCTGTGCTTGGTGATCCATCAA  
 GTGAAACCTGCAACAGCATCAGATTGTCTTAAGCCAGCTGAATAGCAACCTGAACTGAGGCAGCTTCC  
 ACCCGTGGATGCAGAACTTGACAACGTTAATAACGTTCTTAGGACAGATTTGGATGGCCTGGTCCAACAG  
 GGCTATCAATCCCTTAATGATATACCTGACAGAGTACAACGCCAAACCAGACTGTCGTAGCAGGTATCA  
 AAAGGCTTTGAATCCATTGGTTCAGATATCGACAATGTAACCTCAGCGTCTTCCATTCAGGATAATA  
 CTCAGCATCTCTGTTTTATGTTAATAACACTGAAAGTTACATCCACAGAAATTTACCTACATTGGAAGAG  
 TATGATTCATACTGGTGGCTGGGTGGCCTGGTCTCTGCTCTCTGCTGACCCCTATCGTGATTTTTTACT  
 ACCTGGGCTTACTGTGTGGCGTGTGCGGCTATGACAGGCATGCCACCCGACCACCCGAGGCTGTGTCTC  
 CAACACCCGAGGCGTCTTCTCATGGTTGGAGTTGGATTAAGTTTCTCTTTTGTGGATATTGATGATC  
 ATTTGTGGTTCTTACCTTTGTCTTTGGTCAAAATGTGGAAAACTGATCTGTGAACCTTACACGAGCAAGG  
 AATTATCCGGGTTTTGGATACACCCTACTTACTAAATGAAGACTGGGAATACTATCTCTCTGGGAAGCT  
 ATTTAATAAATCAAAAATGAAGCTCACTTTTGAACAAGTTTACAGTGACTGCAAAAAAATAGAGGCACT  
 TACGGCACTCTTACCTGCAAGACAGCTTCAATATCAGTGAACATCTCAACATTAATGAGCATACTGGAA  
 GCATAAGCAGTGAATTGGAAGTCTGAAGTAAATCTTAATATCTTTCTGTTGGGTGCAGCAGGAAGAAA  
 AAACCTTCAGGATTTTGTGCTTGTGGAATAGACAGAATGAATTATGACAGCTACTTGGCTCAGACTGGT  
 AAATCCCCCGCAGGAGTGAATCTTTTATCATTGTCATATGATCTAGAAGCAAAAGCAAACAGTTTCCCCC  
 CAGGAAATTTGAGGAACTCCCTGAAAAGAGATGCACAACTATTAACAATTCACCAGCAACGAGTCTCT  
 TCCTATAGAACAATCACTGAGCACTCTATACCAAAGCGTCAAGATACTTCAACGCACAGGGAATGGATTG  
 TTGGAGAGAGTAACTAGGATTCTAGCTTCTCTGGATTTTGTCTCAGAACTTATCACAACAATACTTCTCT  
 CTGTTATTTAGGAACTAAGAAGTATGGGAGAACAATAATAGGATATTTTGAACATTATCTGCAGTG  
 GATCGAGTTCTCTATCAGTGAGAAAGTGGCATCGTCAAACCTGTGGCCACCGCTCTAGATACTGCTGTT  
 GATGCTTTCTGTAGCTACATTATCGACCCCTTGAATTTGTTTTGGTTTGGCATAGGAAAAGCTACTG  
 TATTTTTACTTCCGGCTCAATTTTTGCGGTAACACTGGCTAAGTACTATCGTCGAATGGATTTCGGAGGA  
 CGTGATGATGTTGAACTATACCCATGAAAAACCCATCACAACAT

**ACGCGT**ACGCGGCCGCTCGAGCAGAACTCATCTCAGAAGAGGATCTGGCAGCAAATGATATCCTGGATT  
 ACAAGGATGACGACGATAAGGTTTAA

**Protein Sequence:** >RC227927 representing NM\_001145851  
Red=Cloning site Green=Tags(s)

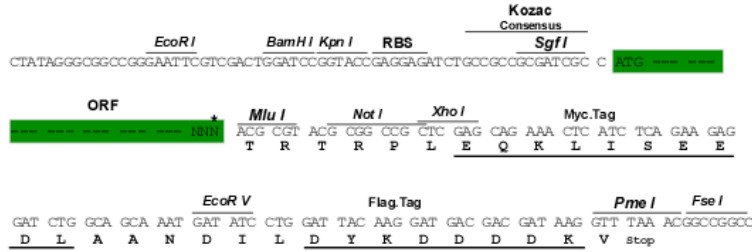
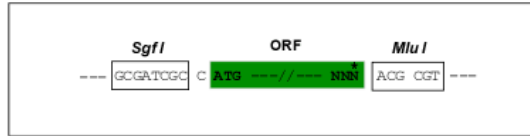
MALVLGSLLLLGLCGNSFSGGQPSSTDAPKAWNYELPATNYETQDSHKAGPIGILFELVHIFLYVVQPRD  
FPEDTLRKFQKAYESKIDYDKIVVYEAGIILCCVLGLLFIILMPLVGYFFCMCRCCNKCGGEMHQKQKE  
NGPF LRKCF AISLLVICIIISIGIFYGFVANHQVRTRIKRSRKLADSNFKDLRLLNETPEQIKYILAQY  
NTTKDKAFTDLNSINSVLGGGILDRLRPNIIPVLDEIKSMATAIKETKEALENMNSTLKSLHQSTQLSS  
SLTSVKTSLRSSLNDPLCLVHPSSSETCNSIRLSLSQLNSNPELRQLPPVDAELDNVNNVLRDLDGLVQQ  
GYQSLNDIPDRVQRQTTTVVAGIKRVLNSIGSDIDNVTQRLPIQDILSAFVSVYVNNTESYIHRNLPLEE  
YDSYWWLGGGLVICSLTLLIVIFYLGLLCGVCYDRHATPTTRGCVSNTGGVFLMVGVLGSLFCWILMI  
IVVLTFFVGFANVEKLICEPYTSKELFRVLDTPYLLNEDWEYYL SGKLFNKSKMKL TFEQVYSDCKKNRGT  
YGTLHLQNSFNISEHLNINEHTGSI SSELESKVNLFLLGAAGRKNLQDFAACGIDRMNYDSYLAQTG  
KSPAGVNL LSFAYDLEAKANSLPPGNLRNSLRDAQTIKTIHQQRVLP IEQSLSTLYQSVKILQRTGNL  
LERVTRILASLDF AQNFITNNTSSVIIIEETKKGRTIIGYFEHYLQWIEFSISEKVASCKPVATALDTAV  
DVFLCSYIIDPLNLFWFGIGKATVFLPALIFAVKLAKYRRMSEDVYDDVETIPMKNPSQH

TRTRPLEQKLI SEEDLAANDILDYKDDDDKV

**Restriction Sites:** Sgfl-MluI

**Cloning Scheme:**

Cloning sites used for ORF Shuttling:



\* The last codon before the Stop codon of the ORF

**ACCN:** NM\_001145851

**ORF Size:** 2499 bp

**OTI Disclaimer:** The molecular sequence of this clone aligns with the gene accession number as a point of reference only. However, individual transcript sequences of the same gene can differ through naturally occurring variations (e.g. polymorphisms), each with its own valid existence. This clone is substantially in agreement with the reference, but a complete review of all prevailing variants is recommended prior to use. [More info](#)

**OTI Annotation:** This clone was engineered to express the complete ORF with an expression tag. Expression varies depending on the nature of the gene.

**Components:** The ORF clone is ion-exchange column purified and shipped in a 2D barcoded Matrix tube containing 10ug of transfection-ready, dried plasmid DNA (reconstitute with 100 ul of water).

**Reconstitution Method:**

1. Centrifuge at 5,000xg for 5min.
2. Carefully open the tube and add 100ul of sterile water to dissolve the DNA.
3. Close the tube and incubate for 10 minutes at room temperature.
4. Briefly vortex the tube and then do a quick spin (less than 5000xg) to concentrate the liquid at the bottom.
5. Store the suspended plasmid at -20°C. The DNA is stable for at least one year from date of shipping when stored at -20°C.

**RefSeq:** [NM\\_001145851.2](#)

**RefSeq ORF:** 2502 bp

**Locus ID:** 8842

**UniProt ID:** [O43490](#)

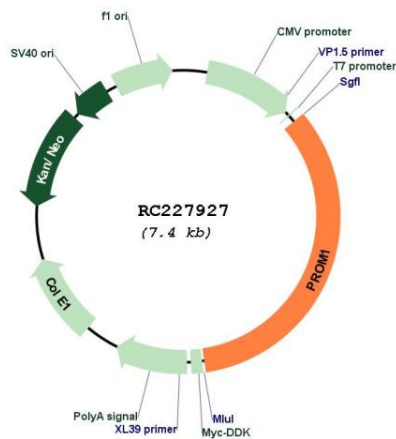
**Cytogenetics:** 4p15.32

**Protein Families:** Druggable Genome, ES Cell Differentiation/IPS, Transmembrane

**MW:** 93.5 kDa

**Gene Summary:** This gene encodes a pentaspan transmembrane glycoprotein. The protein localizes to membrane protrusions and is often expressed on adult stem cells, where it is thought to function in maintaining stem cell properties by suppressing differentiation. Mutations in this gene have been shown to result in retinitis pigmentosa and Stargardt disease. Expression of this gene is also associated with several types of cancer. This gene is expressed from at least five alternative promoters that are expressed in a tissue-dependent manner. Multiple transcript variants encoding different isoforms have been found for this gene. [provided by RefSeq, Mar 2009]

### Product images:



Circular map for RC227927