

Product datasheet for RC227926

MTFR1 (NM_001145838) Human Tagged ORF Clone

Product data:

Product Type: Expression Plasmids
Product Name: MTFR1 (NM_001145838) Human Tagged ORF Clone
Tag: Myc-DDK
Symbol: MTFR1
Synonyms: CHPPR; FAM54A2
Mammalian Cell Selection: Neomycin
Vector: pCMV6-Entry (PS100001)
E. coli Selection: Kanamycin (25 ug/mL)
ORF Nucleotide Sequence: >RC227926 representing NM_001145838
 Red=Cloning site Blue=ORF Green=Tags(s)

TTTTGTAATACGACTCACTATAGGGCGGCCGGAATTCGTCGACTGGATCCGGTACCGAGGAGATCTGCC
 GCC**CGGATCGCC**

ATGCTTGGCTGGATTAAGCGCCTAATTAGGATGGTTTTTCAACAAGTTGGAGTAAGCATGCAATCGATTA
 ACAGCCATGCAACAGAATGGAGTCCCAGCCACCCAGGAGAGGATGCAGTGGCGTCTTTTGCTGATGTTGG
 ATGGGTAGCCAAAGAAGAAGGAGAGTGTTCAGCAAGACTAAGGACAGAGGTCAGATCAAGGCCACCCCTT
 CAGGATGACCTTCTTTTCTTTGAGAAGGCCCAAGCAGACAGATTCCTTACCAGACTTGTCTCAAGAAG
 AGCCTCAGCTGAAGACCCAGCGCTGGCAAATGAGGAAGCACTGCAGAAGATTTGCGCTCTCGAAAATGA
 ACTTGCTGCTCTCAGAGCTCAGATTGCCAAAATTTGTACCCAGCAGGAGCAGAAAATCTACTGCAGGT
 GACTTAGATTCTACCACATTTGGTACCATACCACCACACCCCTCCACCTCCCCACCGCCCTGCCTCCCC
 CTGCACTGGGGCTCCACCAAAGTACATCTGCTGTTGATCTGATTAAGAAGCAAGAGAGAAAAGAGCCAA
 TGCTGGAAGACTTTGGTTAAGAACAATCCAAAGAAACCTGAAATGCCAAATATGCTAGAGATCCTTAA
 GAGATGAACAGTGTAACACTTCGGTCAGTGAAGAGGTCAGAGCAAGATGTGAAGCCCAAGCCAGTGGATG
 CTAAGTGAAGTTGAAAAAGGAATTCAAAGTCTGAATCAGAGGCCACCTCAGAGAGAGTGTGTTGGG
 CCACACATGTTGAAGCCAACAGGAAAAATGAAGGCTTTAATTGAAAATGTATCAGACTCC

ACGCGTACGCGGCCGCTCGAGCAGAAACTCATCTCAGAAGAGGATCTGGCAGCAAATGATATCCTGGATT
 ACAAGGATGACGACGATAAGGTTTAA



[View online »](#)

Protein Sequence: >RC227926 representing NM_001145838
Red=Cloning site Green=Tags(s)

MLGWIKRLIRMVFQQVGVSMQSI^{*}NSHATEWSPSHPGEDAVASFADVGWVAKEEGECSARLRTEVRSRPPL
 QDDL^{*}LF^{*}EKAPSRQISLPDLSQE^{*}EPQLKTPALANEEALQKICALENELAA^{*}LR^{*}QIAKIVTQ^{*}EEQQNLTAG
 DLDSTT^{*}FTG^{*}TIP^{*}HP^{*}PP^{*}PP^{*}PP^{*}LP^{*}PPALGLHQ^{*}STSAVD^{*}L^{*}IKERREKRANAGKTLVKN^{*}NP^{*}KKPEMPNMLEILK
 EMNSVK^{*}LRSVKRSEQDV^{*}KPKPVDATDPAALIAEAL^{*}KKKFA^{*}YR^{*}YRSDSQDEVEK^{*}GIPKSESEATSERV^{*}LFG
 PHMLKPTGKMKAL^{*}IENVSDS

TRTRPLEQKLISEEDLAANDILDYKDDDDKV

Chromatograms: https://cdn.origene.com/chromatograms/mk8050_f05.zip

Restriction Sites: SgfI-MluI

Cloning Scheme:



ACCN: NM_001145838

ORF Size: 900 bp

OTI Disclaimer: The molecular sequence of this clone aligns with the gene accession number as a point of reference only. However, individual transcript sequences of the same gene can differ through naturally occurring variations (e.g. polymorphisms), each with its own valid existence. This clone is substantially in agreement with the reference, but a complete review of all prevailing variants is recommended prior to use. [More info](#)

OTI Annotation: This clone was engineered to express the complete ORF with an expression tag. Expression varies depending on the nature of the gene.

Components: The ORF clone is ion-exchange column purified and shipped in a 2D barcoded Matrix tube containing 10ug of transfection-ready, dried plasmid DNA (reconstitute with 100 ul of water).

Reconstitution Method:

1. Centrifuge at 5,000xg for 5min.
2. Carefully open the tube and add 100ul of sterile water to dissolve the DNA.
3. Close the tube and incubate for 10 minutes at room temperature.
4. Briefly vortex the tube and then do a quick spin (less than 5000xg) to concentrate the liquid at the bottom.
5. Store the suspended plasmid at -20°C. The DNA is stable for at least one year from date of shipping when stored at -20°C.

RefSeq: [NM_001145838.1](#), [NP_001139310.1](#)

RefSeq ORF: 903 bp

Locus ID: 9650

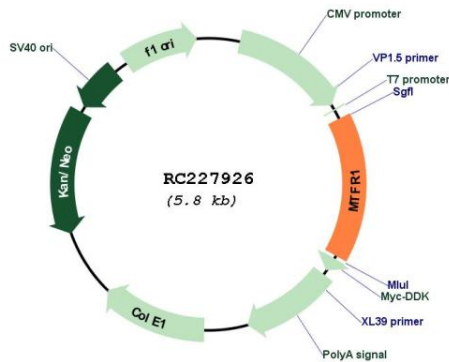
UniProt ID: [Q15390](#)

Cytogenetics: 8q13.1

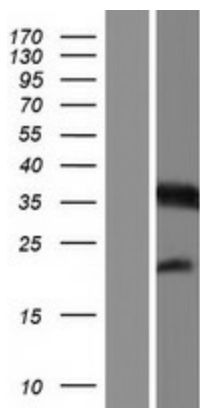
MW: 33 kDa

Gene Summary: This gene encodes a mitochondrial protein that is characterized by a poly-proline rich region. A chicken homolog of this protein promotes mitochondrial fission and the mouse homolog protects cells from oxidative stress. A related pseudogene of this gene is found on chromosome X. [provided by RefSeq, Mar 2009]

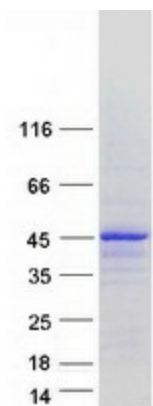
Product images:



Circular map for RC227926



Western blot validation of overexpression lysate (Cat# [LY429023]) using anti-DDK antibody (Cat# [TA50011-100]). Left: Cell lysates from untransfected HEK293T cells; Right: Cell lysates from HEK293T cells transfected with RC227926 using transfection reagent MegaTran 2.0 (Cat# [TT210002]).



Coomassie blue staining of purified MTFR1 protein (Cat# [TP327926]). The protein was produced from HEK293T cells transfected with MTFR1 cDNA clone (Cat# RC227926) using MegaTran 2.0 (Cat# [TT210002]).