

Product datasheet for RC227924

UBAC2 (NM_001144072) Human Tagged ORF Clone

Product data:

Product Type:	Expression Plasmids
Product Name:	UBAC2 (NM_001144072) Human Tagged ORF Clone
Tag:	Myc-DDK
Symbol:	UBAC2
Synonyms:	PHGDHL1
Mammalian Cell Selection:	Neomycin
Vector:	pCMV6-Entry (PS100001)
E. coli Selection:	Kanamycin (25 ug/mL)
ORF Nucleotide Sequence:	>RC227924 representing NM_001144072 Red=Cloning site Blue=ORF Green=Tags(s)

TTTTGTAATACGACTCACTATAGGGCGGCCGGAATTCGTCGACTGGATCCGGTACCGAGGAGATCTGCC
GCC**CGATCGCC**

ATGTTCCACCAGCACCGGCTCCAGTGGGCTCTACAAGGCGCCTCTGTGGAAGAGCCTTCTGCTGGTCCCA
GTGCCCTCTCCCTCTGCTCGCCCTCTCTGCCTCACTGCCAGAAGCTCTTTGTGTATGACCTTCACGC
AGTCAAGAACGACTTCCAGATTTGGAGTTGATATGTGGAAGAATAATTTGCCTTGATTTGAAAGATACT
TTCTGCAGTAGTCTGCTTATTTATAATTTTAGGATATTTGAAAGAAGATATGGAAGCAGAAAATTTGCAT
CCTTTTTGCTGGGTTCTGGGTTTTGTGAGCCTTATTTGACTTTCTCCTCATTGAAGCTATGCAGTATTT
CTTTGGCATCACTGCAGCTAGTAATTTGCCTTCTGGATTCTGGCACCTGTGTTTGTCTGTTTGTACCA
TTTTACTGCTCCATACCAAGAGTCCAAGTGGCACAATTTCTGGTCCGTTGTCCATCACAAACAAGCAT
TGATTTATATATTGGGACTGCAGCTTTTCACTCTGGTTCCTACATCTGGATTGTAGCCATAAGTGGACT
TATGTCCGGTCTGTGCTACGACAGCAAAATGTTCCAGGTGCATCAGGTGCTCTGCATCCCGAGCTGGATG
GCAAAATCTTTTCTGGACACTTGAACCATCTTCTCTTTCAGAACCACCAGCGAAGCCAGAAATTG
GGATGGGAGCCACGCTGGACATCCAGAGACAGCAGAGAATGGAGCTGTGGACCGGCAGCTGATGTTCTC
TCAGTTTGACAAGGGAGGCGACAGAGACAGCAGCAGGGAGGAATGATCAATTGGAATCGTCTTTTTCTC
CCTTTACGTCAGCGACAAAACGTAACATATCAGGGCGGTCGGCAGTCTGAGCCAGCAGCGCCCTCTAG
AAGTTTCTGAGGAACAGGTCGCCCGCTCATGGAGATGGGATTTCCAGAGGTGATGCTTTGGAAGCCCT
GAGAGCTTCAAACAATGACCTCAATGTGCCACCAACTTCTGCTGCAGCAC

ACGCGTACGCGGCCGCTCGAGCAGAACTCATCTCAGAAGAGGATCTGGCAGCAATGATATCCTGGATT
ACAAGGATGACGACGATAAGGTTTAA



[View online »](#)

Protein Sequence: >RC227924 representing NM_001144072
Red=Cloning site Green=Tags(s)

MFTSTGSSGLYKAPLSKSLLLVPSALSLLLALLLPHCQKLFVYDLHAVKDNDFQIWRLICGRIICLDLKD
 FCSSLLIYNFRIFERRYGSRKFASFLGWSVLSALDFLLIEAMQYFFGITAASNLPSGFLAPVFALFVP
 FYCSIPRVQVAQILGPLSITNKTLIYLGLQLFTSGSYIWIVAISGLMSGLCYDSKMFQVHQVLCIPSWM
 AKFFSWTLEPIFSSSEPTSEARIGMGATLDIQRQRMELLDLDRQLMFSQFAQGRQRQQGGMINWNRLF
 PLRQRQNVNYQGGRRQSEPAAPPLEVSEEQVARLMEMGFSRGALEALRASNNDLNVATNFLLQH

TRTRPLEQKLISEEDLAANDILDYKDDDDKV

Chromatograms: https://cdn.origene.com/chromatograms/mk8037_f01.zip

Restriction Sites: SgfI-MluI

Cloning Scheme:

Cloning sites used for ORF Shuttling:



* The last codon before the Stop codon of the ORF

ACCN: NM_001144072

ORF Size: 1032 bp

OTI Disclaimer: The molecular sequence of this clone aligns with the gene accession number as a point of reference only. However, individual transcript sequences of the same gene can differ through naturally occurring variations (e.g. polymorphisms), each with its own valid existence. This clone is substantially in agreement with the reference, but a complete review of all prevailing variants is recommended prior to use. [More info](#)

OTI Annotation: This clone was engineered to express the complete ORF with an expression tag. Expression varies depending on the nature of the gene.

Components: The ORF clone is ion-exchange column purified and shipped in a 2D barcoded Matrix tube containing 10ug of transfection-ready, dried plasmid DNA (reconstitute with 100 ul of water).

Reconstitution Method:

1. Centrifuge at 5,000xg for 5min.
2. Carefully open the tube and add 100ul of sterile water to dissolve the DNA.
3. Close the tube and incubate for 10 minutes at room temperature.
4. Briefly vortex the tube and then do a quick spin (less than 5000xg) to concentrate the liquid at the bottom.
5. Store the suspended plasmid at -20°C. The DNA is stable for at least one year from date of shipping when stored at -20°C.

RefSeq: [NM_001144072.2](#)

RefSeq ORF: 1035 bp

Locus ID: 337867

UniProt ID: [Q8NBM4](#)

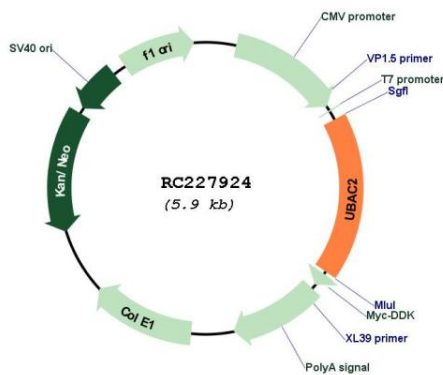
Cytogenetics: 13q32.3

Protein Families: Druggable Genome, Transmembrane

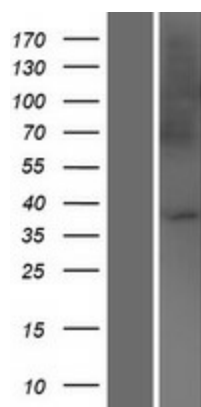
MW: 38.8 kDa

Gene Summary: Restricts trafficking of FAF2 from the endoplasmic reticulum to lipid droplets. [UniProtKB/Swiss-Prot Function]

Product images:



Circular map for RC227924



Western blot validation of overexpression lysate (Cat# [LY428495]) using anti-DDK antibody (Cat# [TA50011-100]). Left: Cell lysates from untransfected HEK293T cells; Right: Cell lysates from HEK293T cells transfected with RC227924 using transfection reagent MegaTran 2.0 (Cat# [TT210002]).