

Product datasheet for **RC227923**

RBFOX1 (NM_001142333) Human Tagged ORF Clone

Product data:

Product Type: Expression Plasmids
Product Name: RBFOX1 (NM_001142333) Human Tagged ORF Clone
Tag: Myc-DDK
Symbol: RBFOX1
Synonyms: 2BP1; A2BP1; FOX-1; FOX1; HRNBP1
Mammalian Cell Selection: Neomycin
Vector: pCMV6-Entry (PS100001)
E. coli Selection: Kanamycin (25 ug/mL)
ORF Nucleotide Sequence: >RC227923 representing NM_001142333
Red=Cloning site Blue=ORF Green=Tags(s)

TTTTGTAATACGACTCACTATAGGGCGGCCGGAATTCGTCGACTGGATCCGGTACCGAGGAGATCTGCC
GCC**CGATCGCC**

ATGAATTGTGAAAGAGAGCAGCTAAGGGTAATCAGGAAGCAGCCGCTGCCCTGACACAATGGCTCAGC
CTTACGTTCCGGCCAGTTTGTCTCCCCGAGAACGGTATCCCCGCGGAATACACGGCCCTCATCCCCA
CCCCGCGCAGAGTACACAGGCCAGACCAGGTTCCCGAGCACACATTAACTGTACCCTCCGCCAG
ACGCACTCCGAGCAGAGCCGGCGGACACGAGCGCTCAGACCGTCTCTGGCACCACACAGACAGATG
ACGAGCACCAGCGGATGGCCAGCCCCAGACACAACCTTCTGAAAACACGAAAACAAGTCTCAGCCAA
GCGGCTGCATGTCTCAATATCCCTTCAGGTTCCGGATCCGGACCTCAGACAAATGTTTGGTCAATTT
GGTAAAATCTTAGATGTTGAAATATTTTTAATGAGCGAGGCTCAAAGGGATTTGGTTTCGTAACTTTCG
AAAATAGTGCCGATGCGGACAGGGCGAGGGAGAAATTACACGGCACCGTGGTAGAGGGCCGTAATAATCGA
GGTAAATAATGCCACAGCACGTGTAATGACAAATAAAAGACCGTCAACCCTTATACAAATGGCTGGAAA
TTGAATCCAGTTGTGGTGACGTCTACAGTCCGAATTCTATGCAGTGCCAGGCTTCCGATCCAGCAG
CCACCGCCGCGGCCGCTACCGAGGGCGCACCTGCGAGGCCGCGGTCCGACCGTGTACAACACCTTCAG
GGCCGCGGCCGCCCCGCCCCGATCCCGGCCTACGGCGGTGTTGTTTACCAGGATGGATTTATGGTGCA
GACATTTATGGTGGTTATGCTGCATACCGCTACGCCAGCCTACCCCTGCCACTGCCGCTGCCTACAGTG
ACAGTTACGGACGAGTTTATGCTGCCGACCCCTACCACCACGCACTTGCTCCAGCCCCACCTACGGCGT
TGGTGCCATGAATGCTTTTGCACCTTTGACTGATGCCAAGACTAGGAGCCATGCTGATGATGGGTCTC
GTTCTTTCTTATTGCAGGCTAGTATATACCGAGGGGATACAACCGTTTGTCCATAC

ACGCGTACGCGGCCGCTCGAGCAGAACTCATCTCAGAAGAGGATCTGGCAGCAATGATATCCTGGATT
ACAAGGATGACGACGATAAGGTTAA



[View online »](#)

Protein Sequence: >RC227923 representing NM_001142333
Red=Cloning site Green=Tags(s)

MNCEREQLRGNQEAAAAPDTMAQPYASAQFAPPQNGIPAEYTAHPHPAPEYTGQTTVPEHTLNL YPPAQ
 THSEQSPADTSAQTVSGTATQTDDAAPT DGQPQTQPSSENTENKSQPKRLHVSNI PFRFRDPLRQMFQGF
 GKILDVEIIFNERGSKGFGFVTFENSADADRAREKLGTVVEGRKIEVNNATARVMTNKKTVNPTYNGWK
 LNPVVGAVYSPEFYAVPGFPYPAATAAAAYRGAHLRGRGRVYNTFRAAAPPPP IPAYGGVVYQDGFYGA
 DIYGGYAA YRYAQPTPATAAAYSDSYGRVYAADPYHHALAPAPTYGVGAMNAFAPLTD AKTRSHADDVGL
 VLSSLQAS IYRGGYNRFAPY

TRTRPLEQKLISEEDLAANDILDYKDDDDKV

Chromatograms: https://cdn.origene.com/chromatograms/mk8055_c08.zip

Restriction Sites: SgfI-MluI

Cloning Scheme:



ACCN: NM_001142333

ORF Size: 1110 bp

OTI Disclaimer: The molecular sequence of this clone aligns with the gene accession number as a point of reference only. However, individual transcript sequences of the same gene can differ through naturally occurring variations (e.g. polymorphisms), each with its own valid existence. This clone is substantially in agreement with the reference, but a complete review of all prevailing variants is recommended prior to use. [More info](#)

OTI Annotation: This clone was engineered to express the complete ORF with an expression tag. Expression varies depending on the nature of the gene.

Components: The ORF clone is ion-exchange column purified and shipped in a 2D barcoded Matrix tube containing 10ug of transfection-ready, dried plasmid DNA (reconstitute with 100 ul of water).

Reconstitution Method:

1. Centrifuge at 5,000xg for 5min.
2. Carefully open the tube and add 100ul of sterile water to dissolve the DNA.
3. Close the tube and incubate for 10 minutes at room temperature.
4. Briefly vortex the tube and then do a quick spin (less than 5000xg) to concentrate the liquid at the bottom.
5. Store the suspended plasmid at -20°C. The DNA is stable for at least one year from date of shipping when stored at -20°C.

RefSeq: [NM_001142333.2](#)

RefSeq ORF: 1113 bp

Locus ID: 54715

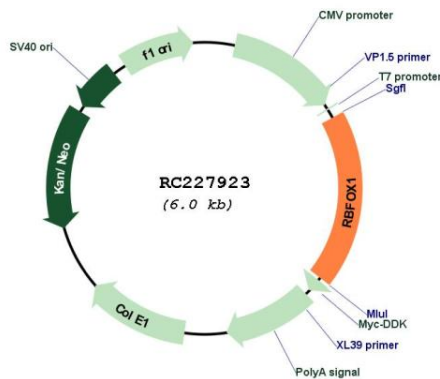
UniProt ID: [Q9NWB1](#)

Cytogenetics: 16p13.3

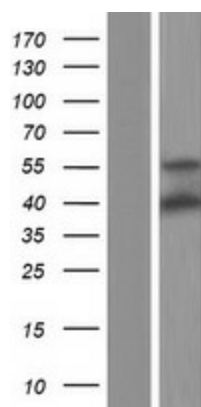
MW: 39.8 kDa

Gene Summary: The Fox-1 family of RNA-binding proteins is evolutionarily conserved, and regulates tissue-specific alternative splicing in metazoa. Fox-1 recognizes a (U)GCAUG stretch in regulated exons or in flanking introns. The protein binds to the C-terminus of ataxin-2 and may contribute to the restricted pathology of spinocerebellar ataxia type 2 (SCA2). Ataxin-2 is the product of the SCA2 gene which causes familial neurodegenerative diseases. Fox-1 and ataxin-2 are both localized in the trans-Golgi network. Several alternatively spliced transcript variants encoding different isoforms have been found for this gene. [provided by RefSeq, Nov 2011]

Product images:



Circular map for RC227923



Western blot validation of overexpression lysate (Cat# [LY428042]) using anti-DDK antibody (Cat# [TA50011-100]). Left: Cell lysates from untransfected HEK293T cells; Right: Cell lysates from HEK293T cells transfected with RC227923 using transfection reagent MegaTran 2.0 (Cat# [TT210002]).