

Product datasheet for RC227919

NDE1 (NM_001143979) Human Tagged ORF Clone

Product data:

Product Type:	Expression Plasmids
Product Name:	NDE1 (NM_001143979) Human Tagged ORF Clone
Tag:	Myc-DDK
Symbol:	NDE1
Synonyms:	HOM-TES-87; LIS4; MHAC; NDE; NUDE; NUDE1
Mammalian Cell Selection:	Neomycin
Vector:	pCMV6-Entry (PS100001)
E. coli Selection:	Kanamycin (25 ug/mL)
ORF Nucleotide Sequence:	>RC227919 ORF sequence Red=Cloning site Blue=ORF Green=Tags(s)

TTTTGTAATACGACTCACTATAGGGCGGCCGGAATTCGTCGACTGGATCCGGTACCGAGGAGATCTGCC
GCC**CGATCGCC**

ATGGAGGACTCCGGAAAGACTTTCAGCTCCGAGGAGGAAGAAGCTAACTATTGGAAAGATCTGGCGATGA
CCTACAAACAGAGGGCAGAAAATACGCAAGAGGAACTCCGAGAATTCAGGAGGGGAAAGCCGAGAATATGA
AGCTGAATTGGAGACGCAGCTGCAACAAATTGAAACCAGGAACAGAGACCTCCTGTCCGAAAATAACCGC
CTTCGCATGGAGCTGAAAACCATCAAGGAGAAGTTTGAAGTGCAGCACTCTGAAGGCTACCGGCAGATCT
CAGCCTTGGAGGATGACCTCGCGCAGACCAAGCCATTAAGACCAATTGCAGAAATACATCAGAGAGCT
GGAGCAAGCAAAATGACGACCTGGAAGAGCCAAGCGCCACGATCATGTCTCTCGAAGACTTTGAGCAG
CGCTTGAATCAGGCCATCGAAAAGAAATGCCTTCTGAAAAGTGAAGTTGATGAAAAAGAGAATCTCTGG
AATCTGTTTCAGAGACTGAAGGATGAAGCCAGAGATTTGCGGCAGGAACTGGCCGTGCAGCAGAAGCAGGA
GAAACCCAGGATCCCATGCCCAGCTCAGTGAAGCTGAGAGGACAGACAGCTGTGCAGGCCACGGGC
TCCGTGCCGTCCACGCCATTGCTACCGAGGACCAAGCTCAAGTTTAAACACACCTGGGAGCTTCAGAC
GTGGCTGGACGACTCCACCGGGGGACCCCCCTCACCTGCGGCCCGGATATCAGCCCTCAACATTGT
GGGAGACCTACTGCGAAAAGTCGGGGCACTGGAGTCCAACTCGTTCTGCCGGAACCTCGTGTACGAT
CAGTCCCCAAACCGAACAGGTGGCCAGCCTCTGGCGGAGCAGCAAGAACAGAGATGGCGGGGAGAGAC
GGCCAAGCAGCACAGCGTGCCTTTGGGTGATAAGGGGTTGGACACGAGTTGCCGCTGGTGTCCAATC
AACAAACAGGTCTGTCAGCTCCTGC

ACGCGTACGCGGCCGCTCGAGCAGAAACTCATCTCAGAAGAGGATCTGGCAGCAAATGATATCCTGGATT
ACAAGGATGACGACGATAAGGTTTAA



[View online »](#)

Reconstitution Method:

1. Centrifuge at 5,000xg for 5min.
2. Carefully open the tube and add 100ul of sterile water to dissolve the DNA.
3. Close the tube and incubate for 10 minutes at room temperature.
4. Briefly vortex the tube and then do a quick spin (less than 5000xg) to concentrate the liquid at the bottom.
5. Store the suspended plasmid at -20°C. The DNA is stable for at least one year from date of shipping when stored at -20°C.

RefSeq: [NM_001143979.1](#), [NP_001137451.1](#)

RefSeq Size: 3936 bp

RefSeq ORF: 1008 bp

Locus ID: 54820

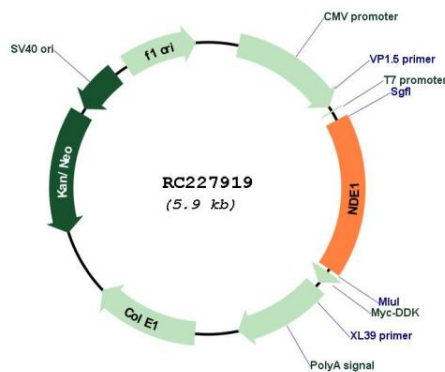
UniProt ID: [Q9NXR1](#)

Cytogenetics: 16p13.11

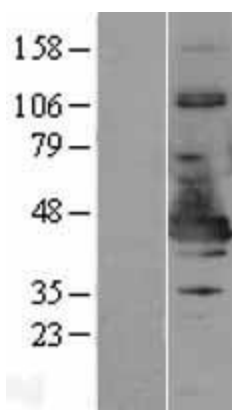
MW: 37.7 kDa

Gene Summary: This gene encodes a member of the nuclear distribution E (NudE) family of proteins. The encoded protein is localized at the centrosome and interacts with other centrosome components as part of a multiprotein complex that regulates dynein function. This protein plays an essential role in microtubule organization, mitosis and neuronal migration. Mutations in this gene cause lissencephaly 4, a disorder characterized by lissencephaly, severe brain atrophy, microcephaly, and severe cognitive disability. Alternative splicing results in multiple transcript variants. [provided by RefSeq, Mar 2012]

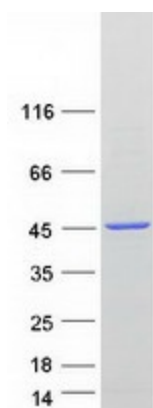
Product images:



Circular map for RC227919



Western blot validation of overexpression lysate (Cat# [LY428439]) using anti-DDK antibody (Cat# [TA50011-100]). Left: Cell lysates from untransfected HEK293T cells; Right: Cell lysates from HEK293T cells transfected with RC227919 using transfection reagent MegaTran 2.0 (Cat# [TT210002]).



Coomassie blue staining of purified NDE1 protein (Cat# [TP327919]). The protein was produced from HEK293T cells transfected with NDE1 cDNA clone (Cat# RC227919) using MegaTran 2.0 (Cat# [TT210002]).