

Product datasheet for **RC227918**

SINHCAF (NM_001135812) Human Tagged ORF Clone

Product data:

Product Type:	Expression Plasmids
Product Name:	SINHCAF (NM_001135812) Human Tagged ORF Clone
Tag:	Myc-DDK
Symbol:	SINHCAF
Synonyms:	C12orf14; FAM60A; L4; TERA
Mammalian Cell Selection:	Neomycin
Vector:	pCMV6-Entry (PS100001)
E. coli Selection:	Kanamycin (25 ug/mL)
ORF Nucleotide Sequence:	>RC227918 ORF sequence Red=Cloning site Blue=ORF Green=Tags(s)

TTTTGTAATACGACTCACTATAGGGCGCCGGGAATTCGTCGACTGGATCCGGTACCGAGGAGATCTGCC
GCC**CGATCGCC**

ATGTTTGGTTTTCAAGCCAAAGATGTACCGAAGTATAGAGGGCTGCTGTATTTGCAGAGCTAAGTCTT
CCAGTTCTCGATTCACTGACAGTAAACGCTATGAAAAGGACTTCCAGAGCTGTTTGGATTGCATGAGAC
TCGTTCCAGGAGACATCTGCAATGCCTGTGCTGCTTGTGAAAAGATGGAAGAAGTTGCCAGCAGGATCA
AAAAAACTGGAATCATGTGGTAGATGCAAGGGCTGGACCCAGTCTAAAGACTACATTGAAACCAAGA
AAGTAAAACCTCTATCTGGGAACAGGATAAAAAGCAACCAGATCAGTAACTGCAGAAGGAATTTAAACG
TCATAATTCTGATGCTCACAGTACCACCTCAAGTGCCTCCCAGCTCAATCTCCTTGTACAGTAACCAG
TCAGATGACGGCTCAGATACAGAGATGGCTTCTGGTTCTAACAGAACACCAGTTTTTTTCTTTTAGATC
TCACTTACTGGAAAAGACAGAAGATATGTTGTGGGATCATCTATAAAGGCCGTTTTGGGGAAGTCTCAT
TGACACACATCTTTCAAGCCTTGCTGCAGCAATAAGAAAAGCAGCTGCTGAGAAGCCAGAGGAGCAGGGG
CCAGAGCCTCTGCCATCTCCACTCAGGAGTGG

ACGCGTACGCGGGCGCTCGAGCAGAAACTCATCTCAGAAGAGGATCTGGCAGCAAATGATATCTGGATT
ACAAGGATGACGACGATAAGGTTTAA



[View online »](#)

Protein Sequence: >RC227918 protein sequence
Red=Cloning site Green=Tags(s)

MFGFHKPKMYRSIEGCCICRAKSSSSSRFTDSKRYEKDFQSCFGLHETRSGDICNACVLLVKRWKLPAGS
 KKNWNHVVDARAGPSLKTTLKPKVKVTL SGNRIKSNQISKLQKEFKRHNSDAHSTSSASPAQSPCYSNQ
 SDDGSDTEMASGSNRTPVFSFLDLTYWKRQKICCGIIYKGRFGEVLIDHLFKPCCSNKAAAEEKPEEQG
 PEPLPISTQEW

TRTRPLEQKLISEEDLAANDILDYKDDDDKV

Chromatograms: https://cdn.origene.com/chromatograms/mk6080_h06.zip

Restriction Sites: SgfI-MluI

Cloning Scheme:



ACCN: NM_001135812

ORF Size: 663 bp

OTI Disclaimer: The molecular sequence of this clone aligns with the gene accession number as a point of reference only. However, individual transcript sequences of the same gene can differ through naturally occurring variations (e.g. polymorphisms), each with its own valid existence. This clone is substantially in agreement with the reference, but a complete review of all prevailing variants is recommended prior to use. [More info](#)

OTI Annotation: This clone was engineered to express the complete ORF with an expression tag. Expression varies depending on the nature of the gene.

Components: The ORF clone is ion-exchange column purified and shipped in a 2D barcoded Matrix tube containing 10ug of transfection-ready, dried plasmid DNA (reconstitute with 100 ul of water).

Reconstitution Method:

1. Centrifuge at 5,000xg for 5min.
2. Carefully open the tube and add 100ul of sterile water to dissolve the DNA.
3. Close the tube and incubate for 10 minutes at room temperature.
4. Briefly vortex the tube and then do a quick spin (less than 5000xg) to concentrate the liquid at the bottom.
5. Store the suspended plasmid at -20°C. The DNA is stable for at least one year from date of shipping when stored at -20°C.

RefSeq: [NM_001135812.2](#)

RefSeq Size: 3030 bp

RefSeq ORF: 666 bp

Locus ID: 58516

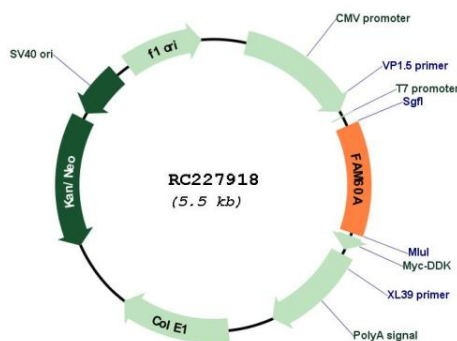
UniProt ID: [Q9NP50](#)

Cytogenetics: 12p11.21

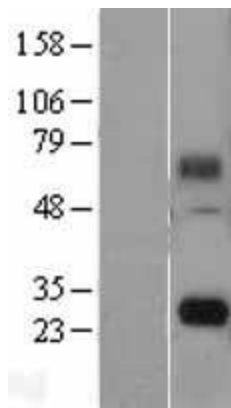
MW: 24.9 kDa

Gene Summary: Subunit of the Sin3 deacetylase complex (Sin3/HDAC), this subunit is important for the repression of genes encoding components of the TGF-beta signaling pathway (PubMed:22865885, PubMed:22984288). Core component of a SIN3A complex (composed of at least SINHCAF, SIN3A, HDAC1, SAP30, RBBP4, OGT and TET1) present in embryonic stem (ES) cells. Promotes the stability of SIN3A and its presence on chromatin and is essential for maintaining the potential of ES cells to proliferate rapidly, while ensuring a short G1-phase of the cell cycle, thereby preventing premature lineage priming (By similarity).[UniProtKB/Swiss-Prot Function]

Product images:



Circular map for RC227918



Western blot validation of overexpression lysate (Cat# [LY427713]) using anti-DDK antibody (Cat# [TA50011-100]). Left: Cell lysates from untransfected HEK293T cells; Right: Cell lysates from HEK293T cells transfected with RC227918 using transfection reagent MegaTran 2.0 (Cat# [TT210002]).