

Product datasheet for **RC227915**

GKAP1 (NM_001135953) Human Tagged ORF Clone

Product data:

Product Type: Expression Plasmids
Product Name: GKAP1 (NM_001135953) Human Tagged ORF Clone
Tag: Myc-DDK
Symbol: GKAP1
Synonyms: FKSG21; GKAP42
Mammalian Cell Selection: Neomycin
Vector: pCMV6-Entry (PS100001)
E. coli Selection: Kanamycin (25 ug/mL)
ORF Nucleotide Sequence: >RC227915 representing NM_001135953
Red=Cloning site Blue=ORF Green=Tags(s)

TTTTGTAATACGACTCACTATAGGGCGGCCGGAATTCGTCGACTGGATCCGGTACCGAGGAGATCTGCC
GCC**CGGATCGCC**

ATGGCCTCAGCAGTACTTAGTTCTGTTCCACCACCGCTTCTCGTTTTGCCCTGTTACAAGTGGATAGTG
GCAGTGGCTCTGATTCTGAACCTGGAAAAGGTAAGGTCGAAATACTGGAAAGTCTCAAACCTTAGGAAG
CAAGTCAACTACAAATGAGAAAAAAGAGAGAAAAAGAAGAAAAAGAAGAACAGCAACAGAGTGAAGCA
AATGAGCTCAGGAATCTTGCTTTAAGAAAATCCCCAGAAATCCTCCCATGCTGTTTGAACGCTCAAC
ATGATCTTCCATTGTCAAACCCAGTACAGAAGGATTCACGAGAAGAAAATTGGCAAGAGTGGAGACAAAG
AGATGAGCAGCTGACATCTGAAATGTTTGAAGCAGATCTTGAGAAGGCATTGTTACTAAGTAAACTAGAA
TATGAAGAGCACAAAAAGGAGTATGAAGATGCTGAAAATACTTCAACTCAGTCCAAAGTTATGAATAAAA
AAGATAAAGAAAGAATCATCAGGGAAAAGACAGACCTCTCACAGTATCACTAAAAGATTTTCATTCGGA
AGATCACATTAGTAAAAAGACTGAGGAAGTGGTTCTGAAAGATGGAAGAATTGAAAGACTAAAGTTAGAG
CTTGAAGGAAAGATGCTGAAATCCAGAAGCTGAAAAATGTAATCACTCAATGGGAGGCAAAGTATAAGG
AAGTAAAGGCAAGAAATGCACAATTATTGAAAATGCTTCAGGAAGGTGAAATGAAAGATAAGGCAGAAAT
ACTTCTGCAAGTTGATGAATCACAAAGTATCAAGAATGAGCTCACTATTCAGGTGACTTCACTTCATGCT
GCATTAGAACAAGAAAGATCTAAAGTAAAGTATTACAAGCAGAGTTAGCCAAATACCAGGTTGGCAGAA
AAGGGAAAAGAACTCTGAATCCGACCAGTGTAGG

ACGCGTACGCGGCCGCTCGAGCAGAAACTCATCTCAGAAGAGGATCTGGCAGCAAATGATATCCTGGATT
ACAAGGATGACGACGATAAGGTTTAA



[View online »](#)

Protein Sequence: >RC227915 representing NM_001135953
Red=Cloning site Green=Tags(s)

MASAVLSSVPTTASRFALLQVDSGSGSDSEPGKGGKGRNTGKSQTLGSKSTTNEKKREKRRKKKEQQQSEA
 NELRNLAFFKKIPQKSSHAVCNAQHDLPLSNPVQKDSREENWQEWQRDEQLTSEMFEADLEKALLSKLE
 YEEHKKEYEDAENTSTQSKVMNKKDKRKNHQGKDRPLTVSLKDFHSEDHISKKTEEVVLKDGRIERLKLE
 LERKDAEIQKLKNVITQWEAKYKEVKARNAQLLKMLQEGEMKDKAEILLQVDESQSIKNETLIQVTSLHA
 ALEEQERSKVVLQAELAKYQGGRRKGRNSESQCR

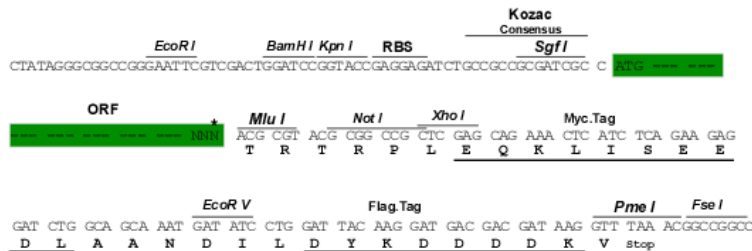
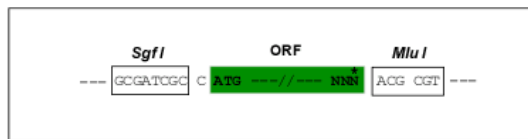
TRTRPLEQKLISEEDLAANDILDYKDDDDKV

Chromatograms: https://cdn.origene.com/chromatograms/mk8051_d06.zip

Restriction Sites: SgfI-MluI

Cloning Scheme:

Cloning sites used for ORF Shuttling:



* The last codon before the Stop codon of the ORF

ACCN: NM_001135953

ORF Size: 945 bp

OTI Disclaimer: The molecular sequence of this clone aligns with the gene accession number as a point of reference only. However, individual transcript sequences of the same gene can differ through naturally occurring variations (e.g. polymorphisms), each with its own valid existence. This clone is substantially in agreement with the reference, but a complete review of all prevailing variants is recommended prior to use. [More info](#)

OTI Annotation: This clone was engineered to express the complete ORF with an expression tag. Expression varies depending on the nature of the gene.

Components: The ORF clone is ion-exchange column purified and shipped in a 2D barcoded Matrix tube containing 10ug of transfection-ready, dried plasmid DNA (reconstitute with 100 ul of water).

Reconstitution Method:

1. Centrifuge at 5,000xg for 5min.
2. Carefully open the tube and add 100ul of sterile water to dissolve the DNA.
3. Close the tube and incubate for 10 minutes at room temperature.
4. Briefly vortex the tube and then do a quick spin (less than 5000xg) to concentrate the liquid at the bottom.
5. Store the suspended plasmid at -20°C. The DNA is stable for at least one year from date of shipping when stored at -20°C.

Note: Plasmids are not sterile. For experiments where strict sterility is required, filtration with 0.22um filter is required.

RefSeq: [NM_001135953.1](#), [NP_001129425.1](#)

RefSeq ORF: 948 bp

Locus ID: 80318

UniProt ID: [Q5VSY0](#)

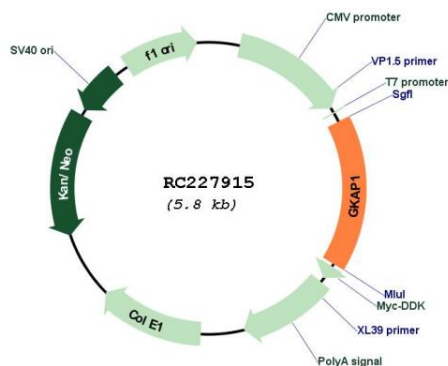
Cytogenetics: 9q21.32

Protein Families: Druggable Genome

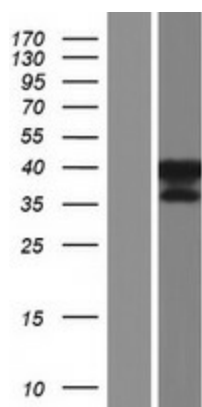
MW: 35.9 kDa

Gene Summary: This gene encodes a protein that is highly similar to the mouse cGMP-dependent protein kinase anchoring protein 42kDa. The mouse protein has been found to localize with the Golgi and recruit cGMP-dependent protein kinase I alpha to the Golgi in mouse testes. It is thought to play a role in germ cell development. Transcript variants encoding different isoforms have been found for this gene. [provided by RefSeq, Oct 2008]

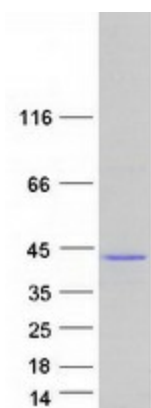
Product images:



Circular map for RC227915



Western blot validation of overexpression lysate (Cat# [LY427741]) using anti-DDK antibody (Cat# [TA50011-100]). Left: Cell lysates from untransfected HEK293T cells; Right: Cell lysates from HEK293T cells transfected with RC227915 using transfection reagent MegaTran 2.0 (Cat# [TT210002]).



Coomassie blue staining of purified GKAP1 protein (Cat# [TP327915]). The protein was produced from HEK293T cells transfected with GKAP1 cDNA clone (Cat# RC227915) using MegaTran 2.0 (Cat# [TT210002]).