

Product datasheet for **RC227910**

LRP5L (NM_001135772) Human Tagged ORF Clone

Product data:

Product Type: Expression Plasmids
Product Name: LRP5L (NM_001135772) Human Tagged ORF Clone
Tag: Myc-DDK
Symbol: LRP5L
Synonyms: DKFZp434O0213
Mammalian Cell Selection: Neomycin
Vector: pCMV6-Entry (PS100001)
E. coli Selection: Kanamycin (25 ug/mL)
ORF Nucleotide Sequence: >RC227910 representing NM_001135772
Red=Cloning site Blue=ORF Green=Tags(s)

TTTTGTAATACGACTCACTATAGGGCGGCCGGAATTCGTCGACTGGATCCGGTACCGAGGAGATCTGCC
GCC**CGATCGCC**

ATGGAGGGCCACGTCTACTGGACGGATGACGAGGTGTGGGCCATCCGCAGGGCATACCTGGATGGGTCTG
GGGCGCAGACGCTGATCAACACCAAGATCAACGACCCCGATGACATCGCAGTCAACTGGGTGGCCCGAAG
CCTCTATTGGACCCACACAGGCACTGAACACATCGAGGTGACGTGCCTCAACAGCACCTCCACAAGATC
CTGGTGCAGAGGACATGGACGAGCCCCGTGCCATTGCACTGCATCCCGAGATGGGCCTCACGTACTGGA
TAGACTGGGGAGAGAACCCTGAAATCAAGCGTGCCAACCTGGACAGGCAGGAGCTGCGCGTGCTGGTCAA
TGCTTCCCTCGGGTGGCCCAACGGCCTGGCCCTGGACCTGCAGGAAGGGAAGCTCTACTGGGAGATGCC
AAGACAGACAAGATCGAGGCGATCAGTGTGATGAGACGAAGAGGCAGACCCCTCCTGAAGGACAAGTCC
CACACATTTTCAGGTTACCCCTGCTGGGGGACTTCATCTACTGGACCGCCTGGCAGCACCACAGCATCAA
GCGGGTACACAAGGTCAAGGCCAACCGGGACGTATCATTGACCAGCTGCCCGACCTGATGGGGCTCAA
GCTGTGAACGTGGACAAGGTGCTCGGAACCAACCCTCATGCGGACAGGAATGGGGTGCAGCCACCTGTG
CTTCTTACGCCCCACACAACCCGGTTGGCTGCCCATCTAGGGCTGGAAGTGC

ACGCGTACGCGGCCGCTCGAGCAGAAACTCATCTCAGAAGAGGATCTGGCAGCAAATGATATCCTGGATT
ACAAGGATGACGACGATAAGGTTTAA



[View online »](#)

Protein Sequence: >RC227910 representing NM_001135772
Red=Cloning site Green=Tags(s)

MEGHVYWTDDDEVWAIIRRAYLDGSGAQLINTKINDPDDIAVNWVARSLYWTHTGTEHIEVTCLNSTSHKI
 LVSEDMDEPRAIALHPMGLTYWIDWGENPEIKRANLDRQELRVLVNASLWPNGLALDLQEGKLYWGDA
 KTDKIEAISVDETKRQTLKDKLPHIFRFTLLGDFIYWTAWQHHSIKRVHKVKANRDVIIDQLPDLMLGLK
 AVNVDKVVGTPHADRNGGAATCASSRPTQPLAAPSRAWNC

TRTRPLEQKLISEEDLAANDILDYKDDDDKV

Chromatograms: https://cdn.origene.com/chromatograms/mk6480_d06.zip

Restriction Sites: SgfI-MluI

Cloning Scheme:

Cloning sites used for ORF Shuttling:



* The last codon before the Stop codon of the ORF

ACCN: NM_001135772

ORF Size: 756 bp

OTI Disclaimer: The molecular sequence of this clone aligns with the gene accession number as a point of reference only. However, individual transcript sequences of the same gene can differ through naturally occurring variations (e.g. polymorphisms), each with its own valid existence. This clone is substantially in agreement with the reference, but a complete review of all prevailing variants is recommended prior to use. [More info](#)

OTI Annotation: This clone was engineered to express the complete ORF with an expression tag. Expression varies depending on the nature of the gene.

Components: The ORF clone is ion-exchange column purified and shipped in a 2D barcoded Matrix tube containing 10ug of transfection-ready, dried plasmid DNA (reconstitute with 100 ul of water).

Reconstitution Method:

1. Centrifuge at 5,000xg for 5min.
2. Carefully open the tube and add 100ul of sterile water to dissolve the DNA.
3. Close the tube and incubate for 10 minutes at room temperature.
4. Briefly vortex the tube and then do a quick spin (less than 5000xg) to concentrate the liquid at the bottom.
5. Store the suspended plasmid at -20°C. The DNA is stable for at least one year from date of shipping when stored at -20°C.

RefSeq: [NM_001135772.2](#)

RefSeq ORF: 759 bp

Locus ID: 91355

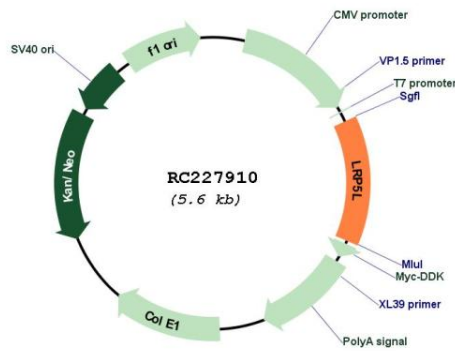
UniProt ID: [A4QPB2](#)

Cytogenetics: 22q11.23

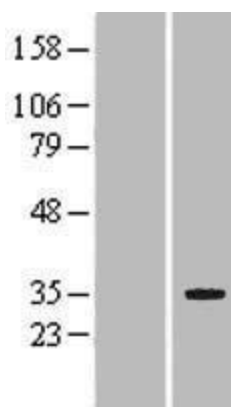
Protein Families: Druggable Genome

MW: 28.3 kDa

Product images:



Circular map for RC227910



Western blot validation of overexpression lysate (Cat# [LY427704]) using anti-DDK antibody (Cat# [TA50011-100]). Left: Cell lysates from untransfected HEK293T cells; Right: Cell lysates from HEK293T cells transfected with RC227910 using transfection reagent MegaTran 2.0 (Cat# [TT210002]).