

Product datasheet for **RC227908**

VASH2 (NM_001136475) Human Tagged ORF Clone

Product data:

Product Type:	Expression Plasmids
Product Name:	VASH2 (NM_001136475) Human Tagged ORF Clone
Tag:	Myc-DDK
Symbol:	VASH2
Mammalian Cell Selection:	Neomycin
Vector:	pCMV6-Entry (PS100001)
E. coli Selection:	Kanamycin (25 ug/mL)
ORF Nucleotide Sequence:	>RC227908 representing NM_001136475 Red=Cloning site Blue=ORF Green=Tags(s)

TTTTGTAATACGACTCACTATAGGGCGGCCGGAATTCGTCGACTGGATCCGGTACCGAGGAGATCTGCC
GCC**CGATCGCC**

ATGACGATCCCAGACTGGCTCCAGGCGATCCAGAATTACATGAAGACCCTACAATATAATCACACAGGGA
CCCAGTTCTTTGAAATTAGGAAAATGAGACCGCTGAGTGGGTTAATGGAAACAGCAAAGAAATGACCCG
AGAGTCCTTGCCTATCAAATGCCTTGAAGCTGTCATCCTGGGCATCTACTTAACCAATGGGCAGCCTTCC
ATTGAGCGGTTCCCATCAGCTTTAAAACCTACTTCTCAGGAACTACTTTCACCACGTTGTGCTGGGGA
TTTACTGCAATGGCCGCTATGGCTCATTGGGCATGAGCCGAGGGCTGAGCTGATGGACAAGCCATTGAC
TTTTCGGACTCTGAGTGACCTCATCTTTGACTTTGAGGACTCTTACAAGAAATACCTGCACACAGTCAAG
AAGGTCAAGATTGGGCTGTACGTCCCCCATGAGCCTCATAGCTTCCAGCCATTGAGTGGGAAGCAGCTGG
TCCTCAACGTCTCAAAGATGCTGAGGGCTGACATAAGGAAGGAGCTGGAGAAATATGCCAGGGACATGAG
AATGAAGATCCTGAAACCTGCAAGTGCCCACTCTCCGACCAAGTGAGAAGCCGGGGAAAATCCCTGTCC
CCCAGAAGGAGACAGGCAAGCCCCCGAGGAGGCTCGGCCGGCGAGAGAAGTCGCTGCACTGCCTGAAA
AGAAGGTGGCTGATCTGAGCACTCTGAATGAAGTGGGCTATCAAATCCGAATT

ACGCGTACGCGGCCGCTCGAGCAGAACTCATCTCAGAAGAGGATCTGGCAGCAAATGATATCCTGGATT
ACAAGGATGACGACGATAAGGTTTAA



[View online »](#)

Protein Sequence: >RC227908 representing NM_001136475
 Red=Cloning site Green=Tags(s)

MTIPDWLQAIQNYMKTLYNHTGTQFFEIRKMRPLSGLMETAKEMTRESLPIKCLEAVILGIYLTNGQPS
 IERFPISFKTYFSGNYFHHVVLGIYCNGRYGSLGMSRRAELMDKPLTFRTLSDLIFDFEDSYKKYLHTVK
 KVKIGLYVPEPHSFQPIEWKQLVLNVSKMLRADIRKELEKYARDMRMKILKPASAHSPYVRSRGKSL
 PRRRQASPPRRRLGRREKSPALPEKKVADLSTLNEVGYQIRI

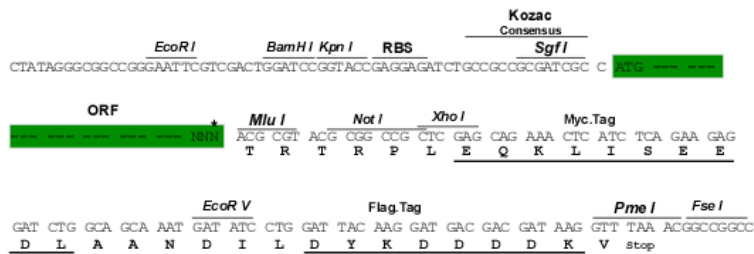
TRTRPLEQKLISEEDLAANDILDYKDDDDKV

Chromatograms: https://cdn.origene.com/chromatograms/ja1506_a01.zip

Restriction Sites: SgfI-MluI

Cloning Scheme:

Cloning sites used for ORF Shuttling:



* The last codon before the Stop codon of the ORF

ACCN: NM_001136475

ORF Size: 753 bp

OTI Disclaimer: The molecular sequence of this clone aligns with the gene accession number as a point of reference only. However, individual transcript sequences of the same gene can differ through naturally occurring variations (e.g. polymorphisms), each with its own valid existence. This clone is substantially in agreement with the reference, but a complete review of all prevailing variants is recommended prior to use. [More info](#)

OTI Annotation: This clone was engineered to express the complete ORF with an expression tag. Expression varies depending on the nature of the gene.

Components: The ORF clone is ion-exchange column purified and shipped in a 2D barcoded Matrix tube containing 10ug of transfection-ready, dried plasmid DNA (reconstitute with 100 ul of water).

Reconstitution Method:

1. Centrifuge at 5,000xg for 5min.
2. Carefully open the tube and add 100ul of sterile water to dissolve the DNA.
3. Close the tube and incubate for 10 minutes at room temperature.
4. Briefly vortex the tube and then do a quick spin (less than 5000xg) to concentrate the liquid at the bottom.
5. Store the suspended plasmid at -20°C. The DNA is stable for at least one year from date of shipping when stored at -20°C.

RefSeq: [NM_001136475.3](#)

RefSeq ORF: 756 bp

Locus ID: 79805

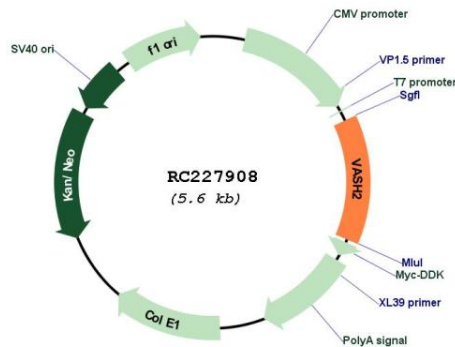
UniProt ID: [Q86V25](#)

Cytogenetics: 1q32.3

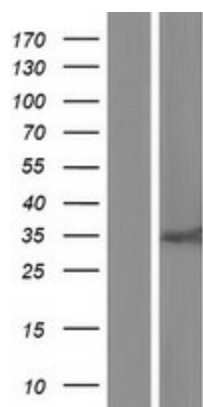
MW: 29.1 kDa

Gene Summary: Tyrosine carboxypeptidase that removes the C-terminal tyrosine residue of alpha-tubulin, thereby regulating microtubule dynamics and function (PubMed:29146869). Acts as an activator of angiogenesis: expressed in infiltrating mononuclear cells in the sprouting front to promote angiogenesis (PubMed:19204325).[UniProtKB/Swiss-Prot Function]

Product images:



Circular map for RC227908



Western blot validation of overexpression lysate (Cat# [LY427886]) using anti-DDK antibody (Cat# [TA50011-100]). Left: Cell lysates from untransfected HEK293T cells; Right: Cell lysates from HEK293T cells transfected with RC227908 using transfection reagent MegaTran 2.0 (Cat# [TT210002]).