

Product datasheet for RC227906

KIAA1712 (CEP44) (NM_001145314) Human Tagged ORF Clone

Product data:

Product Type:	Expression Plasmids
Product Name:	KIAA1712 (CEP44) (NM_001145314) Human Tagged ORF Clone
Tag:	Myc-DDK
Symbol:	KIAA1712
Synonyms:	KIAA1712; PS1TP3
Mammalian Cell Selection:	Neomycin
Vector:	pCMV6-Entry (PS100001)
E. coli Selection:	Kanamycin (25 ug/mL)
ORF Nucleotide Sequence:	>RC227906 representing NM_001145314 Red=Cloning site Blue=ORF Green=Tags(s)

TTTTGTAATACGACTCACTATAGGGCGGCCGGAATTCGTCGACTGGATCCGGTACCGAGGAGATCTGCC
GCC**CGATCGCC**

ATGGCAACAGGTGACTTAAAAAGAAGCTTACGGAACCTAGAACAGGTGCTCCGCTTGCTAAATTATCCTG
AAGAGGTGGACTGTGTAGGTTTGATAAAGGGAGACCCAGCAGCATCTTTGCCCATCATCAGCTATTCTTT
TACCTCACTCACCTTATGTAACAGAACTTATAATGGAATCCAATGTAGAGCTCATAGCAAAAAATGAC
TTGCGCTTTATAGATGCTGTCTATAAGCTTCTTCGTGATCAATTTAATTATAAACCAATTTTGACAAAA
AGCAGTTTATCCAATGTGGGTTTGCAGAATGAAAATCCAATTTGTTGTGATTTTTGAATTGTGTGAT
GAAAAAGCACAAGGAATTAAGCAGTCTTCAGAAGATCCATCACAAACAAAGAAAATCAGTTCTGGT
AAGTCAGAACCTCCTTTGGGCAATGAGAAAATATCTGCAGAGGCTGTTGGCGTTGATATCAGTGGCAGGT
TTATGACCTCAGGAAAGAAGAAAGCTGTGGTGATTTCGTCACCTGTATAATGAAGATAATGTTGACATTT
TGAGGATACATTAAGTCCAATAACAGATGTTAATGAAGCAGTTGATGTGTCTGACTTAAATGCTACTGAA
ATAAAGATGCCTGAAGTAAAGGTTCTGAAATCAAGGCTGAGCAACAGGATGTAATGTTAATCCTGAGA
TTACTGCACTACAACTATGCTTGCTGAATGCCAAGAAAATCTTAAGAACTGACTTCGATAGAGAAAAG
GTTAGACTGTTTGAACAAAAATGAAAGGAAAAGTGATGGTAGATGAAAACACCTGGACTAATCTTCTT
AGTCGTGTCACCTTCTTGAACAGAAAATGCTTTTGCTAAAAAGAAATGATGAATTTATAGAGTTAATG
AAGTTAGTGAAGACTACGCTTCTTGATAGTACATGGACCTTCTGAATCCTCACAGAAAAAGCGAAGTAGA
GAGGCCAGCAAGTATTCCTCTGCTCTGGCTATAGTACAGCATCATCAGATTCAACTCCCAGAGCCTCT
ACTGTTAATTAAGTGTGGTTTGAATGAGATTTTCCAGAGAATTTTCTGCATGGAGTGCTACATCCTCTTGT
CCAGTCTCAGCTGGCTGCTCCGTGGCATACTTCATACCTTTTCATCACAGAGCTTTGCTTGGCCTCTCTC
CTGTGTG

ACGGCTACGGCGCGCTCGAGCAGAAAATCATCTCAGAAGAGGATCTGGCAGCAATGATATCCTGGATT
ACAAGGATGACGACGATAAGGTTTAA



[View online »](#)

Protein Sequence: >RC227906 representing NM_001145314
Red=Cloning site Green=Tags(s)

MATGDLKRSRLRNLEQVLRLLNYPPEEVDVGLIKGDPAASLPPIISYSFTSYSPYVTELI MESNVELIAKND
 LRFIDAVYKLLRDQFNYPILTKKQFIQCGFAEWKIQIVCDILNCVMKKHKELSSLQKIPSQQRKKISSG
 KSEPLGNEKISAEAVGVDISGRFMTSGKKKAVVIRHLYNEDNVDISEDTLSPITDVNEAVDVS DLNATE
 IKMPEVKVPEIKAEQQDVNVNPEITALQTMLAECQENLKKLTSIEKRLDCLEQKMKGKVMVDENTW TNL
 SRVTLLLETEMLLSKKNDEFIEFNEVSEDYASCSDMDLLNPHRKSEVERPASIP LSSGYSTASSDSTPRAS
 TVNYCGLNEISENFPAWSATSSCSSLSWLLRGHTSYLSSQSFAPWPLSCV

TRTRPLEQKLISEEDLAANDILDYKDDDDKV

Chromatograms: https://cdn.origene.com/chromatograms/mk8037_c06.zip

Restriction Sites: SgfI-MluI

Cloning Scheme:



* The last codon before the Stop codon of the ORF

ACCN: NM_001145314

ORF Size: 1197 bp

OTI Disclaimer: The molecular sequence of this clone aligns with the gene accession number as a point of reference only. However, individual transcript sequences of the same gene can differ through naturally occurring variations (e.g. polymorphisms), each with its own valid existence. This clone is substantially in agreement with the reference, but a complete review of all prevailing variants is recommended prior to use. [More info](#)

OTI Annotation: This clone was engineered to express the complete ORF with an expression tag. Expression varies depending on the nature of the gene.

Components: The ORF clone is ion-exchange column purified and shipped in a 2D barcoded Matrix tube containing 10ug of transfection-ready, dried plasmid DNA (reconstitute with 100 ul of water).

Reconstitution Method:

1. Centrifuge at 5,000xg for 5min.
2. Carefully open the tube and add 100ul of sterile water to dissolve the DNA.
3. Close the tube and incubate for 10 minutes at room temperature.
4. Briefly vortex the tube and then do a quick spin (less than 5000xg) to concentrate the liquid at the bottom.
5. Store the suspended plasmid at -20°C. The DNA is stable for at least one year from date of shipping when stored at -20°C.

RefSeq: [NM_001145314.1](#), [NP_001138786.1](#)

RefSeq ORF: 1200 bp

Locus ID: 80817

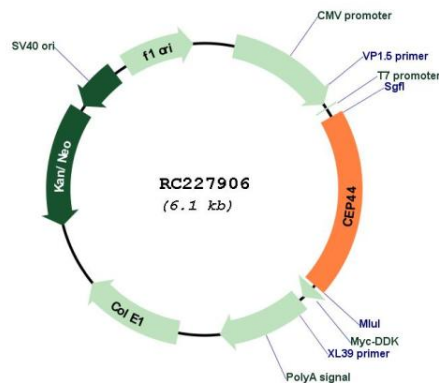
UniProt ID: [Q9C0F1](#)

Cytogenetics: 4q34.1

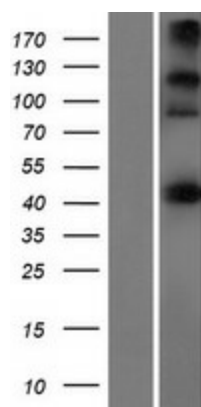
MW: 44.6 kDa

Gene Summary: Centriole-enriched microtubule-binding protein involved in centriole biogenesis. In collaboration with CEP295 and POC1B, is required for the centriole-to-centrosome conversion by ensuring the formation of bona fide centriole wall (PubMed:32060285). Functions as a linker component that maintains centrosome cohesion. Associates with CROCC and regulates its stability and localization to the centrosome (PubMed:31974111). [UniProtKB/Swiss-Prot Function]

Product images:



Circular map for RC227906



Western blot validation of overexpression lysate (Cat# [LY428817]) using anti-DDK antibody (Cat# [TA50011-100]). Left: Cell lysates from untransfected HEK293T cells; Right: Cell lysates from HEK293T cells transfected with RC227906 using transfection reagent MegaTran 2.0 (Cat# [TT210002]).