

## Product datasheet for **RC227904**

### ZNF237 (ZMYM5) (NM\_001142684) Human Tagged ORF Clone

#### Product data:

Product Type:	Expression Plasmids
Product Name:	ZNF237 (ZMYM5) (NM_001142684) Human Tagged ORF Clone
Tag:	Myc-DDK
Symbol:	ZNF237
Synonyms:	HSPC050; MYM; ZNF198L1; ZNF237
Mammalian Cell Selection:	Neomycin
Vector:	pCMV6-Entry (PS100001)
E. coli Selection:	Kanamycin (25 ug/mL)



[View online »](#)

ORF Nucleotide  
Sequence:

>RC227904 representing NM\_001142684  
Red=Cloning site Blue=ORF Green=Tags(s)

TTTTGTAATACGACTCACTATAGGGCGGCCGGAATTCGTCGACTGGATCCGGTACCGAGGAGATCTGCC  
GCCGCGATCGCC

ATGGAAAAATGTTTCAGTGGGAGGATTAGAGTTGACTGAACAGACTCCTGCTTTATTAGGGAATATGGCCA  
TGGCAACTAGTCTCATGGACATAGGGGATTCATTTGGTCATCCAGCTTGCTTTAGTCAGTAGATCTAG  
GAACTCACCAGTGAAGATGATGATGATGATGATGATGTTGTGTTTATTGAATCTATACAACCTCCTTCA  
ATTTCTGCTCCAGCAATAGCTGATCAAAGAACTTCATATTTGCATCATAAAAAATGAAAAGCCTCAAG  
GAAATTATTCTGAATTCCTCCTTCTTCAAGAGATTTGGCATCTCAGAAAAGGAAATATAAGTGAGACAAT  
TGTTATTGATGATGAAGAGGACATAGAAACAAATGGAGGAGCAGAGAAAAAGTCTTCTGTTTTATCGAA  
TGGGGACTTCTGGAACAAAAACAAACCAACGATTTGGATTTCTCCACTTCCAGTCTTCAAGAAGTA  
AGACCAAGACTGGAGTAAGACCTTTAACCTGGTAGAATGAATGTGCAGGAGACTTATTTCAGAAATGG  
AGAATTTGCAACTCATCATAGTCTGATCTTGGATCTCCAGTCAGCTTCATTTCCAGTAATCAGAAA  
CAGCCAGGGGTGGATTCTTTATCACCAGTGGCCTTACTTCGTAAGCAGAAATTTCCAGCCTACAGCCCAAC  
AACAACTTACTAAACCAGCTAAAATCACTTGTGCAAAATGCAAAAAGCCTTTACAGAAGGGACAGACAGC  
TTATCAACGAAAAGGATCAGCTCACCTCTTTGCTCTACCACCTGCCTTTCTTCTTCTCTATAAACGT  
ACTCAAAACACACGAAGCATAATATGTAAGAAAGATGCATCTACAAGAAGGCTAATGTCATTCTCCAG  
TAGAATCAAGCAAATCCTTCCAAGAAATTTATAGTACATCTTGTGTCTCCCTGTGAAAACAACCTGGAA  
TCTTAAAAAAGGAGTTTTAATAAGTCAAGATGTACAATTTGTAGTAAATTAGCAGAGATTGCCATGAA  
GTCAGCGTAAATAATGTAACACATAAACTGTGCAGTAACCATTGCTTTAATAAGTACAGATTGGCCAATG  
GTCTAATAATGAACTGCTGTGAACACTGTGGAGAGTACATGCCTAGTAAGAGTACTGGAACAACATCCT  
GGTGATTGGAGGTCAGCAGAAGAGATTTTGCTGCCAAAGTTGTATTAAACGAATATAAACAGATGATGGAA  
ACAAAATCAAAAAAATTAACAGCATCAGAAAATAGAAAAAGGAATGCTTTTAGAGAAGAAAATGAGAAAC  
AATTATATGGATCGTCAAATACACTTTTGAAAAAATAGAGGGAATCCCAGAAAAAAGGAAAAGACTTC  
ACAGCTACAGCTTTCAGTAGAATGTGGCACGGATACATTACTGATCCAAGAGAATGTGAATTTACCTCCT  
TCTTCCACGTCAACCATAGCTGATACATTTCAAGAGCAACTGGAAGAGAAAAATTTGAAGACTCCATTG  
TACCAGTTGTGCTTCCGCAGATCCAGGTACGTGGCCCCGAATTTGAATATTAACAACGGGACACTCT  
TGTTGAAAATGTTCCGCCTCAAGTAAGAAATTTAACTTTCCAAAAGATAATACAGGAGGAAGTTTCA  
GAACTTATTATACACGGATTCTTCCAATGGTAAAAAACCCTAGATCCTGGTACTTTATTCAACCT  
CAAAAGATTCTGTGTTTTGTCTATATTGCAAACTTTGGGGAAGGAAAAATCAACTGAAAAATGAAAA  
TGGGTGCAAGATTGGCAACATTTATCAGATTTCTTAGTAAACATGAAGAAAGTGAATGCACGTCAAC  
AATAGTGTAAAGTACTCAAAATTAATCTGATCTGAAAAAATAAAGCTATTGATGCTGCAGAACACA  
GATTATATGAAAATGAGAAAAATGATGGTGTGCTGTTGTTGTACACG

ACGCGTACGCGGCCGCTCGAGCAGAACTCATCTCAGAAGAGGATCTGGCAGCAAATGATATCCTGGATT  
ACAAGGATGACGACGATAAGGTTTAA

**Protein Sequence:** >RC227904 representing NM\_001142684

Red=Cloning site Green=Tags(s)

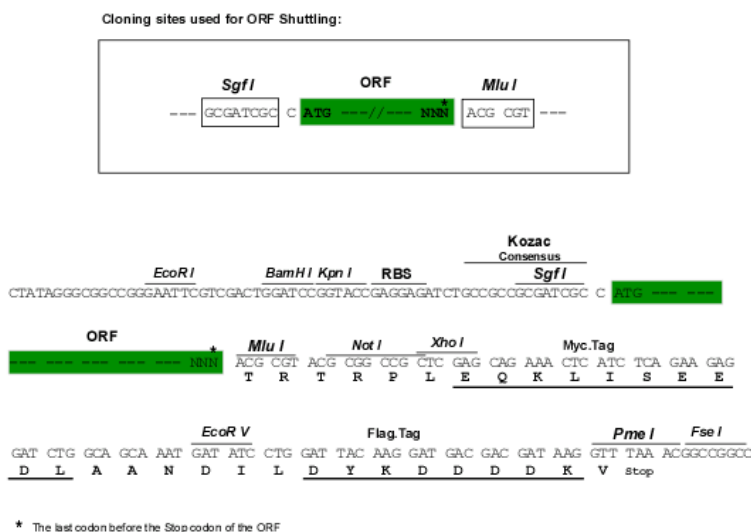
```
MEKCSVGGLELETEQTPALLGNMAMATSLMDIGDSFGHPACPLVSRSRNSPVEDDDDDDDVVFIESIQPPS
ISAPAIADQRNFIASSKNEKPQGNYSVIPSSRDLASQKGNISETIVIDDEEDIETNGGAIEKSSCFIE
WGLPGTKNKTNDLDFSTSSLRSRKTGTGVRPFNPGRMNVAGDLFQNGEFATHHSPDSWISQSASFPSNQK
QPGVDSLSPVALLRKQNFQPTAQQLTKPAKITCANCKKPLQKGQTAYQRKGSALHFCSTTCLSSF SHKR
TQNTRSIICKKDASTKKANVILPVESKSFQEFYSTSCLSPCENNWNLKKGVFNKSRCTICKSLAEIRHE
VSVNNVTHKLCNSNCFNKYRLANGLIMNCCEHCGEYMPKSTGNNILVIGGQQKRFCCQSCINEYKQMME
TKSKKLTASENRKRNAFRENEKQLYGSSNTLLKKIEGIEPEKKEKTSQLQLSVECGTDLLIQENVNLP
SSTSTIADTFQEQLLEKNFEDSIVPVLSADPGTWPRILNIKQRDTLVENVPPQVRNPNFKDNTGRKFS
ETYYTRILPNGEKTRSWLLYSTSKDSVFLYCKLFGGKGNQLKNENGCKDWQHL SHILSKHEESEMHVN
NSVKYSKCLKSDLKKNKAIDAAEHRLYENEKNDGVLLLYT
```

TRTRPLEQKLISEEDLAANDILDYKDDDDKV

**Chromatograms:** [https://cdn.origene.com/chromatograms/mk8072\\_c02.zip](https://cdn.origene.com/chromatograms/mk8072_c02.zip)

**Restriction Sites:** SgfI-MluI

**Cloning Scheme:**



**ACCN:** NM\_001142684

**ORF Size:** 2007 bp

**OTI Disclaimer:** The molecular sequence of this clone aligns with the gene accession number as a point of reference only. However, individual transcript sequences of the same gene can differ through naturally occurring variations (e.g. polymorphisms), each with its own valid existence. This clone is substantially in agreement with the reference, but a complete review of all prevailing variants is recommended prior to use. [More info](#)

**OTI Annotation:** This clone was engineered to express the complete ORF with an expression tag. Expression varies depending on the nature of the gene.

**Components:** The ORF clone is ion-exchange column purified and shipped in a 2D barcoded Matrix tube containing 10ug of transfection-ready, dried plasmid DNA (reconstitute with 100 ul of water).

**Reconstitution Method:**

1. Centrifuge at 5,000xg for 5min.
2. Carefully open the tube and add 100ul of sterile water to dissolve the DNA.
3. Close the tube and incubate for 10 minutes at room temperature.
4. Briefly vortex the tube and then do a quick spin (less than 5000xg) to concentrate the liquid at the bottom.
5. Store the suspended plasmid at -20°C. The DNA is stable for at least one year from date of shipping when stored at -20°C.

**RefSeq:** [NM\\_001142684.1](#), [NP\\_001136156.1](#)

**RefSeq ORF:** 2010 bp

**Locus ID:** 9205

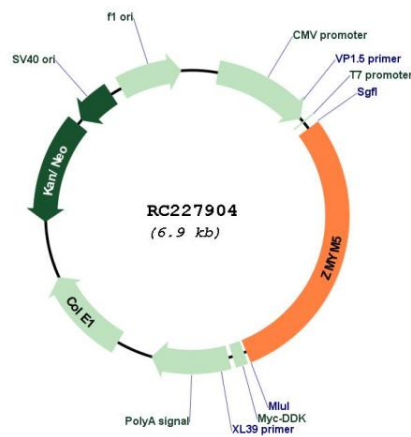
**UniProt ID:** [Q9UJ78](#)

**Cytogenetics:** 13q12.11

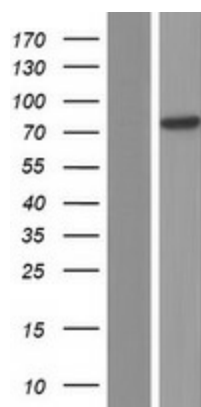
**MW:** 74.6 kDa

**Gene Summary:** Functions as a transcriptional regulator.[UniProtKB/Swiss-Prot Function]

**Product images:**



Circular map for RC227904



Western blot validation of overexpression lysate (Cat# [LY428247]) using anti-DDK antibody (Cat# [TA50011-100]). Left: Cell lysates from untransfected HEK293T cells; Right: Cell lysates from HEK293T cells transfected with RC227904 using transfection reagent MegaTran 2.0 (Cat# [TT210002]).