

Product datasheet for RC227903

NIPA1 (NM_001142275) Human Tagged ORF Clone

Product data:

Product Type:	Expression Plasmids
Product Name:	NIPA1 (NM_001142275) Human Tagged ORF Clone
Tag:	Myc-DDK
Symbol:	NIPA1
Synonyms:	FSP3; SLC57A1; SPG6
Mammalian Cell Selection:	Neomycin
Vector:	pCMV6-Entry (PS100001)
E. coli Selection:	Kanamycin (25 ug/mL)
ORF Nucleotide Sequence:	>RC227903 representing NM_001142275 Red=Cloning site Blue=ORF Green=Tags(s)

TTTTGTAATACGACTCACTATAGGGCGCCGGGAATTCGTCGACTGGATCCGGTACCGAGGAGATCTGCC
GCC**CGATCGCC**

ATGGCTGTTGGCCAGATTGAACTTCTGGCTTACACGGCGGTCCCACGGTCTGGTAACCCCTGG
GCGCCCTTGGAGTACCGTTCGGGTCCATTTAGCTTCTATCTCCTGAAGGAAAAGCTCAACATCTTGGG
CAAGTTGGGGTGCCTGCTAAGCTGTGCAGGCTCCGTCGTGCTGATTATCCACTCCCAAAGTCTGAGAGT
GTGACAACTCAGGCTGAGCTGGAGGAAAAGCTGACCAATCCAGTGTGGGGCTACCTGTGCATCGTGC
TGCTCATGCTGCTGCTCATCTTCTGGATCGCGCCGGCCATGGGCCACCAACATCATGGTCTACAT
CAGCATCTGCTCCTTGTGGGCAGTTTACCGTGCCTTCCACCAAGGGCATCGGGCTGGCGGCCAAGAC
ATCTTGATAACAACCCGTCCAGTCAGAGAGCCCTCTGCCTGTGCCTGGTACTCTGGCCGTGCTCGGCT
GCAGCATCATCGTCCAGTTCAGGTACATCAACAAGGCGCTGGAGTGCTTCGACTCCTCGGTGTTCCGGGGC
CATCTACTACGTCGTGTTTACCACGCTGGTCTGCTGGCCTCAGCCATCCTTCCGGGAGTGGAGCAAC
GTGGCCCTGGTGGACTTCTTGGGATGGCCTGTGGATTACGACCGTCTCCGTGGGGATTGTCTTATAC
AGGTGTTCAAAGAGTTCAATTTCAACCTTGGGGAGATGAACAAATCTAATATGAAAACAGAC

ACGCGTACGCGGCCGCTCGAGCAGAACTCATCTCAGAAGAGGATCTGGCAGCAAATGATATCCTGGATT
ACAAGGATGACGACGATAAGGTTTAA



[View online »](#)

Protein Sequence: >RC227903 representing NM_001142275
 Red=Cloning site Green=Tags(s)

MAVGQIGNFLAYTAVPTLVTPPLGALGVFPGSILASYLLKEKLNILGKLGCLLSCAGSVLIIHSPKSES
 VTTQAELEEKL TNPVFGYLCIVLLMLLLIFWIAPAHGPTNIMVYISICSLLSFTVPSTKGIGLAAQD
 ILHNNPSSQRALCLCLVLLAVLGCIIIVQFRYINKALECFDSSVFGAIYYVVFRTLVLASAILFREWSN
 VGLVDFLGMACGFTTVSVGIVLIQVFKEFNFLGEMNKSNMKTD

TRTRPLEQKLISEEDLAANDILDYKDDDDKV

Chromatograms: https://cdn.origene.com/chromatograms/ja1534_e06.zip

Restriction Sites: SgfI-MluI

Cloning Scheme:



ACCN: NM_001142275

ORF Size: 762 bp

OTI Disclaimer: The molecular sequence of this clone aligns with the gene accession number as a point of reference only. However, individual transcript sequences of the same gene can differ through naturally occurring variations (e.g. polymorphisms), each with its own valid existence. This clone is substantially in agreement with the reference, but a complete review of all prevailing variants is recommended prior to use. [More info](#)

OTI Annotation: This clone was engineered to express the complete ORF with an expression tag. Expression varies depending on the nature of the gene.

Components: The ORF clone is ion-exchange column purified and shipped in a 2D barcoded Matrix tube containing 10ug of transfection-ready, dried plasmid DNA (reconstitute with 100 ul of water).

Reconstitution Method:

1. Centrifuge at 5,000xg for 5min.
2. Carefully open the tube and add 100ul of sterile water to dissolve the DNA.
3. Close the tube and incubate for 10 minutes at room temperature.
4. Briefly vortex the tube and then do a quick spin (less than 5000xg) to concentrate the liquid at the bottom.
5. Store the suspended plasmid at -20°C. The DNA is stable for at least one year from date of shipping when stored at -20°C.

RefSeq: [NM_001142275.1](#), [NP_001135747.1](#)

RefSeq ORF: 765 bp

Locus ID: 123606

UniProt ID: [Q7RTP0](#)

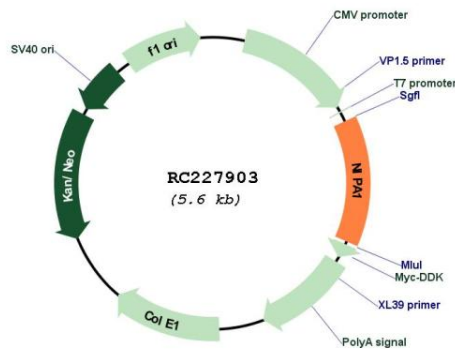
Cytogenetics: 15q11.2

Protein Families: Druggable Genome, Transmembrane

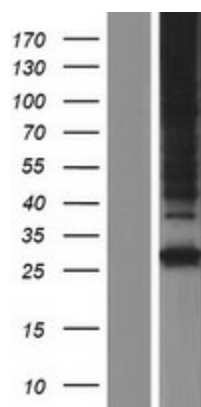
MW: 27.1 kDa

Gene Summary: This gene encodes a magnesium transporter that associates with early endosomes and the cell surface in a variety of neuronal and epithelial cells. This protein may play a role in nervous system development and maintenance. Multiple transcript variants encoding different isoforms have been found for this gene. Mutations in this gene have been associated with autosomal dominant spastic paraplegia 6. [provided by RefSeq, Nov 2008]

Product images:



Circular map for RC227903



Western blot validation of overexpression lysate (Cat# [LY427999]) using anti-DDK antibody (Cat# [TA50011-100]). Left: Cell lysates from untransfected HEK293T cells; Right: Cell lysates from HEK293T cells transfected with RC227903 using transfection reagent MegaTran 2.0 (Cat# [TT210002]).