

## Product datasheet for **RC227899**

### TLE2 (NM\_001144762) Human Tagged ORF Clone

#### Product data:

Product Type:	Expression Plasmids
Product Name:	TLE2 (NM_001144762) Human Tagged ORF Clone
Tag:	Myc-DDK
Symbol:	TLE2
Synonyms:	ESG; ESG2; GRG2
Mammalian Cell Selection:	Neomycin
Vector:	pCMV6-Entry (PS100001)
E. coli Selection:	Kanamycin (25 ug/mL)



[View online »](#)

**ORF Nucleotide Sequence:**

>RC227899 representing NM\_001144762  
 Red=Cloning site Blue=ORF Green=Tags(s)

TTTTGTAATACGACTCACTATAGGGCGGCCGGAATTCGTCGACTGGATCCGGTACCGAGGAGATCTGCC  
 GCC**CGCATCGCC**

ATGCAGCGACATTATGTCATGTATTATGAGATGTCGTACGGGCTCAACATTGAAATGCATAAGCAGGCGG  
 AGATTGTGAAGCGTCTGAGCGGTATCTGCGCTCAGATTATCCCCTTCTGACCCAGGAGCATCAGCAGCA  
 GGTGCTCCAGGCCGTAGAACCGCGCAAGCAGGTACCCTGGGGGAGCTGAACAGCCTCATCGGGAGTGCA  
 TCTCCCTCGCCCCCTGAGAGTCTCGTGGAGGAGGAGCGACCGAGTGGCCCTGGTGGTGGCGGGAAGCAGA  
 GAGCAGATGAGAAGGAGCCATCAGGACCTTATGAAAGCGACGAAGACAAGAGTGATTACAATCTGGTGGT  
 GGACGAGGACCAACCCTCAGAGCCCCCAGCCGGCTACCACCCCTGCGGAAAGGTACCCATCTGCATT  
 CCTGCCGTCGGGACCTGGTGGACAGTCCAGCCTCCTTGGCTCTAGCCTTGGCTCACCGCTGCCTAGAG  
 CCAAGGAGCTCATCTGAATGACCTTCCGCCAGCACTCTGCCTCCAAATCCTGTGACTCTCCCCGCC  
 CCAGGACGCTTCCACCCCGGGCCAGCTCGGCCAGTCACTCTGCCAGTTGTGCCAAGCCAGCACTT  
 TCACGGACAGCGTCGCCCTGAGGAGCCCCCTGACTCTGTCCAGTCCCTTACCACGTCTTCAGCCTGG  
 GCTCCACAGCACTCTCAACGGAGACCTCTCCGTGCCAGCTCCTACGTACGCTCCACCTGTCCCCCA  
 GGTGACGAGCTCTGTGGTGTACGGACGCTCCCCGTGATGGCATTGAGTCTCATCCCCATCTCCGAGGG  
 TCATCCGTCTTCTCCCTACCCAGCATCCCTGGGGAAAGCCGGCCTACTCCTTCCACGTGTCTGCGG  
 ACGGGCAGATGCAGCCGGTCCCTTCCCCTCGGATGACTGGTAGGGCGGGGATCCCGCGGCACGCCCC  
 GCAGCTGCACACGCTGGCCATGGCGAGGTGGTCTGCGCGGTACCATCAGCGGCTCCACACAGCATGTG  
 TACACGGGCGGCAAGGGCTGTGTGAAGGTGTGGGACGTGGGCCAGCCTGGGGCAAGACGCCCTGGCCC  
 AGCTCGACTGCCGAACCGAGACAACACTACATTTCGTTTCTGCAAGTTGCTGCCGGATGGCCGGATCTGAT  
 CGTGGGCGGTGAGGCCAGCACCTTGTCCATTTGGGACCTGGCGGGCCACCCCCGTATCAAGGCCGAG  
 CTGACTTCTCAGCCCCAGCCTGCTACGCCCTGGCCGTACGCCCGACGCCAAGGTTTGCTTCTCCTGCT  
 GCAGCGATGGCAACATTGTGGTCTGGGACCTGCAGAATCAGACTATGGTCAGGCAGTTCCAGGGCCACAC  
 GGACGGCGCCAGCTGCATTGATATTTCCGATTACGGCACTCGGCTCTGGACAGGGGGCTGGACAACACG  
 GTGCGCTGCTGGGACCTGCGGGAGGGCCCGCAGCTGCAGCAGCATGACTTCACTCCCAGATTTTCTCCC  
 TGGGCCACTGCCCTAACCCAGGACTGGCTGGCGGTGGAAATGGAGAGTAGCAACGTGGAGATCCTGCACGT  
 CCGCAAGCCGGAGAAATACCAGCTGCACCTCCACGAGAGCTGCGTGTCCCTGAAGTTTGCCTCTGCG  
 GGACGGTGGTTTGTGAGCACCGGAAGGACAACCTGCTCAACGCCTGGAGGACGCCGTACGGGGCCAGCA  
 TTTTCCAGTCCAAGGAGTCGTCTCAGTCTGAGTTGTGACATCTCCAGAAATAACAATACATCGTGAC  
 AGGCTCGGGGACAAGAAGGCCACCGTGTATGAGGTGGTCTAC

**ACGCGT**ACGCGGCCGCTCGAGCAGAAACTCATCTCAGAAGAGGATCTGGCAGCAAATGATATCCTGGATT  
 ACAAGGATGACGACGATAAGGTTTAA

**Protein Sequence:**

>RC227899 representing NM\_001144762  
 Red=Cloning site Green=Tags(s)

MQRHYVMYYEMSYGLNIEMHKQAEIVKRLSGICAQIIPFLTQEHQQVQLQAVERAKQVTVGELNSLIGSA  
 SPSPPEESLVEEERPSGPGGGGKQRADEKEPSGPIESDEDKSDYNLVVDEDPSEPPSPATTPCGKVPICI  
 PARRDLVDSPLASSLGSPLPRAKELILNDLPASTPASKSCDSPPQDASTPGPSSASHLCQLAAKPA  
 STDSVALRSPLTSSPFTTSFSLGSHSTLNGDLSVPSSVYSLHLSPOVSSVVYGRSPVMAFESHPLRG  
 SSVSSSLPSIPGGKPAYSFHVSADGQMQPVFPFSDALVGAGIPRHARQLHTLAHGEVVCVAVTISGSTQHV  
 YTGKGGCVKVDVGPAGKTPVAQLDCLNRDNYIRSCKLLPDGRSLIVGGEASTLSIWDLAAPTPIKAE  
 LTSSAPACYALAVSPDAKVCFCSSDGNIVVWDLQNQTMVRQFQGHDTGASCIDI SDYGRWLWTGGLDNT  
 VRCWDLREGRQLQHQDFSSQIFSLGHCPNQDWLAVGMESNVEILHVRKPEKYQLHLHESCVLSLKFASC  
 GRWFVSTGKDNLLNAWRTPYGASIFQSKESSVLSCDISRNNKYIVTGS GDKKATVYEVVY

**TR**TRPLEQKLISEEDLAANDILDYKDDDDKV

**Chromatograms:** [https://cdn.origene.com/chromatograms/mk8070\\_b10.zip](https://cdn.origene.com/chromatograms/mk8070_b10.zip)

**Restriction Sites:** SgfI-MluI

**Cloning Scheme:**



**ACCN:** NM\_001144762

**ORF Size:** 1863 bp

**OTI Disclaimer:** The molecular sequence of this clone aligns with the gene accession number as a point of reference only. However, individual transcript sequences of the same gene can differ through naturally occurring variations (e.g. polymorphisms), each with its own valid existence. This clone is substantially in agreement with the reference, but a complete review of all prevailing variants is recommended prior to use. [More info](#)

**OTI Annotation:** This clone was engineered to express the complete ORF with an expression tag. Expression varies depending on the nature of the gene.

**Components:** The ORF clone is ion-exchange column purified and shipped in a 2D barcoded Matrix tube containing 10ug of transfection-ready, dried plasmid DNA (reconstitute with 100 ul of water).

**Reconstitution Method:**

1. Centrifuge at 5,000xg for 5min.
2. Carefully open the tube and add 100ul of sterile water to dissolve the DNA.
3. Close the tube and incubate for 10 minutes at room temperature.
4. Briefly vortex the tube and then do a quick spin (less than 5000xg) to concentrate the liquid at the bottom.
5. Store the suspended plasmid at -20°C. The DNA is stable for at least one year from date of shipping when stored at -20°C.

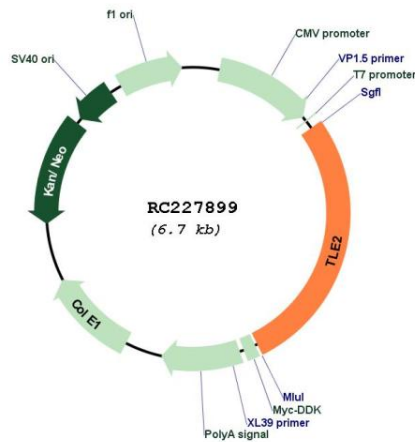
**RefSeq:** [NM\\_001144762.1](#), [NP\\_001138234.1](#)

**RefSeq ORF:** 1866 bp

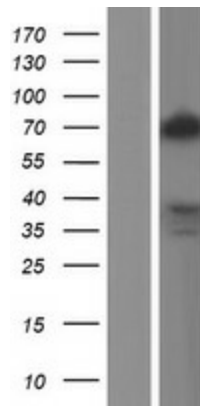
**Locus ID:** 7089

**UniProt ID:** [Q04725](#)  
**Cytogenetics:** 19p13.3  
**Protein Families:** Transcription Factors  
**MW:** 66.5 kDa  
**Gene Summary:** Transcriptional corepressor that binds to a number of transcription factors. Inhibits the transcriptional activation mediated by CTNNB1 and TCF family members in Wnt signaling. The effects of full-length TLE family members may be modulated by association with dominant-negative AES (By similarity).[UniProtKB/Swiss-Prot Function]

**Product images:**



Circular map for RC227899



Western blot validation of overexpression lysate (Cat# [LY428507]) using anti-DDK antibody (Cat# [TA50011-100]). Left: Cell lysates from untransfected HEK293T cells; Right: Cell lysates from HEK293T cells transfected with RC227899 using transfection reagent MegaTran 2.0 (Cat# [TT210002]).