

## Product datasheet for **RC227897**

### ENDOGL1 (EXOG) (NM\_001145464) Human Tagged ORF Clone

#### Product data:

Product Type:	Expression Plasmids
Product Name:	ENDOGL1 (EXOG) (NM_001145464) Human Tagged ORF Clone
Tag:	Myc-DDK
Symbol:	ENDOGL1
Synonyms:	ENDOGL1; ENDOGL2; ENGL; ENGL-a; ENGL-b; ENGLA; ENGLB
Mammalian Cell Selection:	Neomycin
Vector:	pCMV6-Entry (PS100001)
E. coli Selection:	Kanamycin (25 ug/mL)
ORF Nucleotide Sequence:	>RC227897 representing NM_001145464 Red=Cloning site Blue=ORF Green=Tags(s)

TTTTGTAATACGACTCACTATAGGGCGGCCGGAATTCGTCGACTGGATCCGGTACCGAGGAGATCTGCC  
GCC**CGATCGCC**

ATGGCTATCAAGAGTATCGCTTCCCGCCTCCGGGGTCCCGTCGTTTTCTGAGCGGCTTCGTGGCTGGGG  
CTGTAGTGGGCGCTGCGGGAGCTGGGCTCGCGGCCCTGCAGTTCCTCCGGAGTCAGGGCGCTGAGGGAGC  
GTTGACAGGGAAGCAGCCGGATGGTGATGCAGACAGAAAGCATTGTAATTTAAGCCTGATCCCAATATC  
CCTCCAACCTTCAGTGCCTTCAATGAAGATTATGTTGGAAGTGGTGGTACAGGAGACACATGGCTCCAG  
CAGGAAATAACAAATTTTCAAGTAAAGCCATGGCTGAAACCTTTTACCTTTCTAACATTGTGCCTCAGGA  
TTTTGATAATAATTCTGGATATTGGAACAGAATAGAAATGTAAGTGTGAGAGCTGACAGAAAGGTTTGAA  
GATGTTTGGGTGGTATCTGGGCCTTTGACCTTACCTCAGACTAGAGGCGATGGAAGAAAATAGTTAGTT  
ACCAGGTGATTGGCGAGGACAACGTGGCAGTCCCTCACACCTTTATAAGGTAATCCTGGCCCGCAGAAG  
CTCAGTATCTACCGAACCCTGGCGCTAGGGGCCCTTTGTGGTACCCAATGAAGCCATCGGCTTCCAGCCC  
CAGTTAACTGAATTCCAAGTGAAGTCCAGGACCTAGAGAAGTTGTCAGGACTGGTGTTCCTCATT  
TGGATAGAAGTATGATATCCGGAATATCTGCTCTGTGGACACCTGTAAGCTCCTGGATTCCAGGAGTT  
CACCTTGTACTTGAGTACAAGAAAGATTGAAGGAGCCCGATCAGTGCTCAGACTGGAAAAGATCATGGAA  
AACTTGAAGAATGCAGAGATTGAACCAGATGATTACTTTATGAGTCGCTATGAGAAGAAGCTAGAAGAAC  
TCAAAGCTAAGGAGCAGTCAGGAACCCAGATAAGAAAGCCATCC

**ACGCGT**ACGCGGCCGCTCGAGCAGAAACTCATCTCAGAAGAGGATCTGGCAGCAAATGATATCCTGGATT  
ACAAGGATGACGACGATAAGGTTTAA



[View online »](#)

**Protein Sequence:** >RC227897 representing NM\_001145464  
Red=Cloning site Green=Tags(s)

MAIKSIASRLRGSRRFLSGFVAGAVVGAAGAGLAALQFFRSQGAEGALTKKQPDGDADRKHKCFKPDPNIPPTFSAFNEDYVGSWGRGHMAPAGNNKFSKAMAETFYLSNIVPQDFDNNSGYWNRIEMYCRELTERFEDVWVVSGLPLTPQTRGDGKKIVSYQVIGEDNVAVPSHLKYVILARRSSVSTEPLALGAFVVPNEAIGFQPQLTEFQVSLQDLEKLSGLVFFPHLDRTSDIRNICSVDTCCKLLDFQEFTLYLSTRKIEGARSVLRLEKIMENLKNAEIEPDDYFMSRYEKKLEELKAKEQSGTQIRKPS

TRTRPLEQKLISEEDLAANDILDYKDDDDKV

**Chromatograms:** [https://cdn.origene.com/chromatograms/mk8051\\_e08.zip](https://cdn.origene.com/chromatograms/mk8051_e08.zip)

**Restriction Sites:** SgfI-MluI

**Cloning Scheme:**



**ACCN:** NM\_001145464

**ORF Size:** 954 bp

**OTI Disclaimer:** The molecular sequence of this clone aligns with the gene accession number as a point of reference only. However, individual transcript sequences of the same gene can differ through naturally occurring variations (e.g. polymorphisms), each with its own valid existence. This clone is substantially in agreement with the reference, but a complete review of all prevailing variants is recommended prior to use. [More info](#)

**OTI Annotation:** This clone was engineered to express the complete ORF with an expression tag. Expression varies depending on the nature of the gene.

**Components:** The ORF clone is ion-exchange column purified and shipped in a 2D barcoded Matrix tube containing 10ug of transfection-ready, dried plasmid DNA (reconstitute with 100 ul of water).

**Reconstitution Method:**

1. Centrifuge at 5,000xg for 5min.
2. Carefully open the tube and add 100ul of sterile water to dissolve the DNA.
3. Close the tube and incubate for 10 minutes at room temperature.
4. Briefly vortex the tube and then do a quick spin (less than 5000xg) to concentrate the liquid at the bottom.
5. Store the suspended plasmid at -20°C. The DNA is stable for at least one year from date of shipping when stored at -20°C.

**RefSeq:** [NM\\_001145464.1](#), [NP\\_001138936.1](#)

**RefSeq ORF:** 957 bp

**Locus ID:** 9941

**UniProt ID:** [Q9Y2C4](#)

**Cytogenetics:** 3p22.2

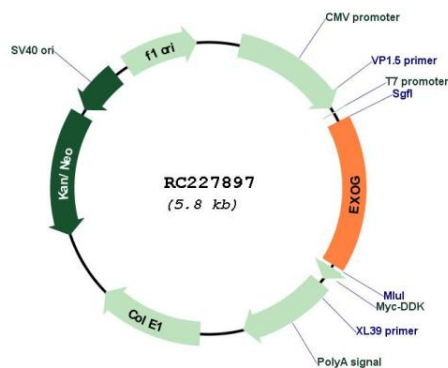
**Protein Families:** Druggable Genome, Transmembrane

**Protein Pathways:** Apoptosis

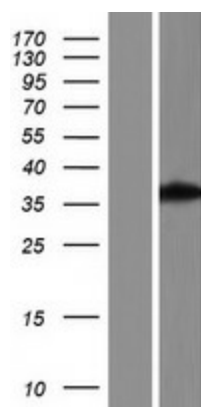
**MW:** 35.44 kDa

**Gene Summary:** This gene encodes an endo/exonuclease with 5'-3' exonuclease activity. The encoded enzyme catalyzes the hydrolysis of ester linkages at the 5' end of a nucleic acid chain. This enzyme is localized to the mitochondria and may play a role in programmed cell death. Alternatively spliced transcript variants have been described. A pseudogene exists on chromosome 18. [provided by RefSeq, Feb 2009]

### Product images:



Circular map for RC227897



Western blot validation of overexpression lysate (Cat# [LY428907]) using anti-DDK antibody (Cat# [TA50011-100]). Left: Cell lysates from untransfected HEK293T cells; Right: Cell lysates from HEK293T cells transfected with RC227897 using transfection reagent MegaTran 2.0 (Cat# [TT210002]).