

Product datasheet for RC227894

LMAN2L (NM_001142292) Human Tagged ORF Clone

Product data:

Product Type:	Expression Plasmids
Product Name:	LMAN2L (NM_001142292) Human Tagged ORF Clone
Tag:	Myc-DDK
Symbol:	LMAN2L
Synonyms:	MRT52; VIPL
Mammalian Cell Selection:	Neomycin
Vector:	pCMV6-Entry (PS100001)
E. coli Selection:	Kanamycin (25 ug/mL)
ORF Nucleotide Sequence:	>RC227894 representing NM_001142292 Red=Cloning site Blue=ORF Green=Tags(s)

TTTTGTAATACGACTCACTATAGGGCGGCCGGAATTCGTCGACTGGATCCGGTACCGAGGAGATCTGCCGCCGCGATCGCC

ATGGCGGCGACTCTGGGACCCCTTGGGTCGTGGCAGCAGTGGCGGCGATGTTTGTGGCTCGGGATGGGTCCAGGATGTTACTCCTTCTTTTGGGGTCTGGGCAGGGCCACAGCAAGTCGGGGCGGGTCAAACGTTTCGAGTACTTGAACGGGAGCACTCGCTGTCGAAGCCCTACCAGGGTGTGGGCACAGGCAAGTTCCTCATGTGGAATCTGATGGGCAATGCCATGGTATGACCCAGTATATCCGCCTACCCAGATATGCAAAGTAACAGGGTGCCTTGTGGAACCGGGTCCATGTTTCCTGAGAGACTGGGAGTTGCAGTGCCTTCAAATCCATGGACAAGGAAAGAAGAAATCTGCATGGGGATGGCTTGGCAATCTGGTACACAAGGATCGGATGCAGCCAGGGCCTGTGTTGGAAACATGGACAAATTTGTGGGGCTGGGAGTATTTGTAGACACCTACCCCAATGAGGAGAAGCAGCAAGAGGCCAGAAAGAGGCGATATTCTCCAGGAGTCCAGCGGGTATCCCTACATCTCAGCCATGGTGAACAACGGCTCCCTCAGCTATGATCATGAGCGGGATGGCGGGCTACAGAGCTGGGAGGCTGCACAGCCATTGTCCGCAATCTTACATTACGACACCTTCTGGTATTGCTACGTAAGAGGCATTTGACGATAATGATGGATATTGATGGCAAGCATGAGTGGAGGGACTGCATTGAAGTGCCCGGAGTCCGCCTGCCCGCGGCTACTACTTCGGCACCTCCTCCATCACTGGGGATCTCTCAGATAATCATGATGTCATTTCTTTGAAGTTGTTGAACTGACAGTGGAGAGAACCCAGAAGAGGAAAGCTCCATCGAGATGTGTTCTTGGCCCTCAGTGGACAATATGAAGCTGCCTGAGATGACAGCTCCACTGCCGCCCTGAGTGGCTGGCCCTCTCCTCATCGTCTTTTTCTCCCTGGTGTCTTCTGTATTTGCCATAGTCATTGGTATCATACTCTACAACAAATGGCAGGAACAGAGCCGAAAGCGCTTCTAC

ACGCGTACGCGGCCGCTCGAGCAGAAACTCATCTCAGAAGAGGATCTGGCAGCAAATGATATCCTGGATTACAAGGATGACGACGATAAGGTTTAA



[View online »](#)

Protein Sequence: >RC227894 representing NM_001142292
Red=Cloning site Green=Tags(s)

MAATLGPLGSWQQWRRCLSARDGSRMLLLLLLLGSGQGPQVVGAGQTFEYLKREHLSKPYQGVGTGSSS
 LWNLMGNAMVMTQYIRLTPDMQSKQGALWNRVPCFLRDWELQVHFKIHGQGKKNLHGDGLAIWYTKDRMQ
 PGPVFGNMDKFVGLGVFVDTYPNEEKQEQEAQKRRYSPGVQRVFPYISAMVNNGSLSYDHERDGRPTLGG
 CTAIVRNLYHDTFLVIRYVKRHLTIMMDIDGKHEWRDCIEVPGVRLPRGYFFGTSSITGDLSDNHVDVLSL
 KLFELTVERTPEEEKLHRDVFVLPVDNMKLPMTAPLPPLSGLALFLIVFFSLVFSVFAIVIGIILYNKW
 QEQRKRFY

TRTRPLEQKLISEEDLAANDILDYKDDDDKV

Chromatograms: https://cdn.origene.com/chromatograms/mk8054_f04.zip

Restriction Sites: SgfI-MluI

Cloning Scheme:



* The last codon before the Stop codon of the ORF

ACCN: NM_001142292

ORF Size: 1077 bp

OTI Disclaimer: The molecular sequence of this clone aligns with the gene accession number as a point of reference only. However, individual transcript sequences of the same gene can differ through naturally occurring variations (e.g. polymorphisms), each with its own valid existence. This clone is substantially in agreement with the reference, but a complete review of all prevailing variants is recommended prior to use. [More info](#)

OTI Annotation: This clone was engineered to express the complete ORF with an expression tag. Expression varies depending on the nature of the gene.

Components: The ORF clone is ion-exchange column purified and shipped in a 2D barcoded Matrix tube containing 10ug of transfection-ready, dried plasmid DNA (reconstitute with 100 ul of water).

Reconstitution Method:

1. Centrifuge at 5,000xg for 5min.
2. Carefully open the tube and add 100ul of sterile water to dissolve the DNA.
3. Close the tube and incubate for 10 minutes at room temperature.
4. Briefly vortex the tube and then do a quick spin (less than 5000xg) to concentrate the liquid at the bottom.
5. Store the suspended plasmid at -20°C. The DNA is stable for at least one year from date of shipping when stored at -20°C.

RefSeq: [NM_001142292.1](#), [NP_001135764.1](#)

RefSeq ORF: 1080 bp

Locus ID: 81562

UniProt ID: [Q9H0V9](#)

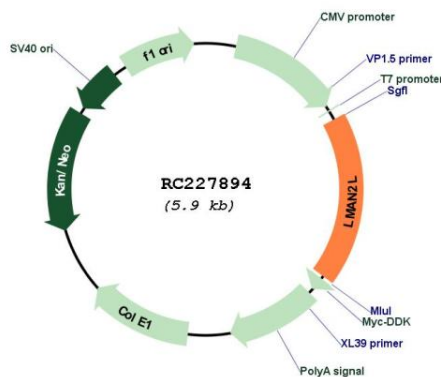
Cytogenetics: 2q11.2

Protein Families: Druggable Genome, Transmembrane

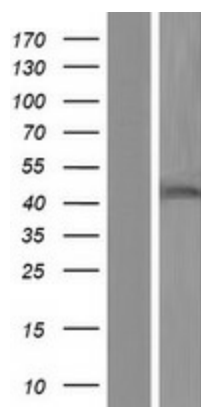
MW: 40.8 kDa

Gene Summary: This gene encodes a protein belonging to the L-type lectin group of type 1 membrane proteins, which function in the mammalian early secretory pathway. These proteins contain luminal carbohydrate recognition domains, which display homology to leguminous lectins. Unlike other proteins of the group, which cycle in the early secretory pathway and are predominantly associated with post endoplasmic reticulum membranes, the protein encoded by this gene is a non-cycling resident protein of the ER, where it functions as a cargo receptor for glycoproteins. It is proposed to regulate exchange of folded proteins for transport to the Golgi and exchange of misfolded glycoproteins for transport to the ubiquitin-proteasome pathway. [provided by RefSeq, Apr 2016]

Product images:



Circular map for RC227894



Western blot validation of overexpression lysate (Cat# [LY428015]) using anti-DDK antibody (Cat# [TA50011-100]). Left: Cell lysates from untransfected HEK293T cells; Right: Cell lysates from HEK293T cells transfected with RC227894 using transfection reagent MegaTran 2.0 (Cat# [TT210002]).