

Product datasheet for **RC227892**

TRIM66 (NM_014818) Human Tagged ORF Clone

Product data:

Product Type:	Expression Plasmids
Product Name:	TRIM66 (NM_014818) Human Tagged ORF Clone
Tag:	Myc-DDK
Symbol:	TRIM66
Synonyms:	C11orf29; TIF1D; TIF1DELTA
Mammalian Cell Selection:	Neomycin
Vector:	pCMV6-Entry (PS100001)
E. coli Selection:	Kanamycin (25 ug/mL)
ORF Nucleotide Sequence:	>RC227892 representing NM_014818 Red=Cloning site Blue=ORF Green=Tags(s)

TTTTGTAATACGACTCACTATAGGGCGGCCGGAATTCGTCGACTGGATCCGGTACCGAGGAGATCTGCC
GCC**CGATCGCC**

ATGGCCAGGAAGTCTCTGAGTGCAAGGAGAAGAGGGCAGCACATATCCTCTGCACCTACTGCAATCGCT
GGCTGTGCAGCTTTGCACAGAGGAACACCGACACAGCCCTGTCCCGGGGGCCATTCTTTCTCGGGC
CCAGAAGGGATCTCCAGGAGTGAATGGTGGTCCCGGAGACTTCACCTTGATTGCTCTACACACAG
GAAGTACTCAAGCTATTCTGTGAGACATGTGATATGCTCACTTGCCATAGCTGCCTAGTGGTGAACACA
AAGAACACAGGTGCAGACATGTTGAAGAAGTTTGCAAAACAGAGGATGCTTCTGGAAGGTGTGACTAC
ACAGGTGGCACATAAGAAATCCAGTCTACAGACATCTGCAAAGCAAATTGAGGACAGGATTTTGAAGTG
AAGCATCAGCATAGGAAGGTGGAACACAGATCAAAATGGCCAAGATGGTTCTGATGAATGAGCTGAACA
AACAGGCCAATGGGCTAATAGAGGAATTAGAGGGGATTACTAATGAGAGAAAGCGGAAGCTGGAACAGCA
GTTACAGAGCATCATGGTTCTCAACCGTCAGTTTGAGCATGTGCAGAATTTATCAACTGGGCTGTCTGC
AGCAAAACCAAGTGTCCCTTTCTTTTCAGCAAAGAGCTGATTGTGTTTCAGATGCAGCGATTGCTGGAGA
CAAGTTGTAACACAGATCCTGGCTCCCTTTGGAGTATCAGATTCACCTGGGAGCCTAATTCTGGACCA
GCAGCTAGCTTCTTTGGCTGCATAACTACTGAAGGTGGACAAATGTCCAGGGCAGATGCTCCTGCTTAT
GGAGGCTTACAGGGGTATCACCTTTTATCAAAGCCACCAAGTCTCCAGTGGCTCAGCAAGAGGCTCTTA
GCCACCCCTCACACAAGTTCAGTCTCCAGCAGTGTGCTCCTCATCTGTGTGCTGCTCCCACTGCTCCCT
AGTCTCGCTTCCCTCAAAGGCCAGGTCCCCCACCAGCATACCCAGCCACAGCTTCAGGCAGCCC
CCTGAGATGGTGGCCAGCAGCTGGGTCTCTGCAGTGTCTGCCCTGCTGCCAGGGAGAAAGAGCTGG
CCTGCAGCCCTCATCCACCAAGCTGCTGCAGCCCTGGCTGGAACCCAGCCCCCGTGGAGCAGGAGAG
CACATCCAGCGGCTGGGCAGCAGTGAATTCACAGCCCGTGTGATTGTCCCCCACAGGATGTTTCAG
CAAGGAGCCCATGCCAGCCACCTTACAGACACCCTTATCCAAGTCCAGTTTGGCCACCACCAAGAAGC
TGAAGCTCAGTCACTTTACAGCAGCCACAGCAGCTACCACCTCCACCACCACCCCTCCCCATCC
CCCACCTCCCTTCCCCCTCCCCACAGCAGCCACACCACCTTCTCTCCATCCAGCATCTGGCTTCT



[View online »](#)

AGTCAGCACGAGAGCCCTCCTGGCCCTGCCTGTTCTCAGAACATGGACATAATGCATCACAAGTTTGAGC
 TGGAGGAAATGCAGAAGGACTTGGAGCTTCTTCTCCAGGCTCAACAGCCCAGCCTGCAACTGAGTCAGAC
 CAAATCTCCTCAGCATCTTCAGCAAACCATTTGTGGGCAGATCAACTACATCGTGAGGCAGCCAGCACCT
 GTCCAGTCCCAGAGCCAGGAGGAGACCTGCAGGCTACAGATGAGCCCCAGCATCTCAGGGCTCAAAGC
 CGGCTCTCCCTCTTGACAAGAATACTGCTGCTGCCTTGCCCCAGGCGTCTGGGGAAGAAACCCCTCTCAG
 TGTCCCCCAGTGGACAGCACCATCCAGCACTCCTCTCCAAATGTGGTGAGAAAGCACTCCACCTCGCTG
 AGCATCATGGGCTTTTCCAACACTCTGGAGATGGAGTTGTCATCTACCAGTTGGAGAGGCCCTAGAGC
 CACAGATCCAGAGTGTGAGCAACCTGACAGCTGGTGCCCCCAGGCAGTACCAAGCCTGCTGAGTGCTCC
 CCCCCAAATGGTGTCCAGCCTGACAAGTGTTCAAAACAGGCCATGCCAGCCTGACAACAGTCACCTA
 CAGACTGTGCCAGCCTTGTGCATAGCACATTCCAGTCCATGCCAACCTGATAAGTGACTCCCCTCAGG
 CTATGGCAAGCCTGGCAAGTGATCACCCTCAGGCTGGGCCAGCCTAATGTCTGGTCACACCCAGGCTGT
 GCCGAGTCTGGCAACTTGTCTCTGCAGAGCATCCCTCCAGTTTCTGACATGCAGCCAGAACTGGGTCC
 AGCTCCAGTTCTGGCCGAACCTCAGGGAGCCTGTGTCCAGAGATGGGGTGATCCCTCCCTGGAGAATG
 CTCTGTGAAGGTAAACTGGAGGAGCCAATTAACCTCTCTGTGAAGAAACCTCCACTGGCGCCAGTGGT
 CAGCACGTCTACAGCTCTGCAGCAGTACCAGAACCCAAAAGAGTGTGAGAATTTGAACAAGGAGCCCTA
 GAGCTGGATGCAAAAGAGAACCAGAGCATCAGAGCCTTCAATAGTGAGCATAAGATTCCCTATGTGCGAC
 TGGAGCGACTCAAGATCTGTGCTGCCTCCTCAGGAGAGATGCCTGTGTTCAAACCTGAAGCCACAGAGAA
 TGATCAGGATGGGAGCTTCTGTGATCATCGAGTGTGGCACTGAGTCTCCAGCATGTCCATTAAGGTC
 AGCCAGGACAGACTGTCTGAGGCCACCCAGGCCCCAGGTCTGGAGGGAAGAAAGTCACTGTCACTTCTT
 TGGCTGGGCAGCGGCCACCAGAAGTGGAGGGCACATCTCTGAAGAACACAGACTCATTCTCGAACCCC
 AGGAGCCAAGAAGGGCCCCCAGCCCCAATAGAGAATGAGGACTTCTGTGCTGTTTGCCTCAATGGCGGA
 GAGTTACTGTGCTGTGACCGCTGCCCAAAGTGTCCACCTCTCTGCCATGTGCCAGCCTTGCTCAGCT
 TCCCAGGGGAGAGTGGGTGTGTACCTTGTGCCGAGCCTGACCCAGCCCAGATGGAGTACGACTGTGA
 GAATGCCTGCTATAACCAGCCTGGAATGCGGGCATCTCTGGCCTAAGCATGTATGACCAGAAGAAGTGT
 GAGAAGCTGGTATTGTCTTGTGCTGCAATAACCTCAGCCTGCCCTTCCATGAACCTGTACGCCCCCTGG
 CCCGGCATTATTACCAGATTATCAAGAGGCCCATGGACCTGTCAATCATCCGAGGAAGCTGCAAAAGAA
 GGACCCAGCTCACTATACCACCCAGAGGAGGTGGTATCAGATGTGCGCCTCATGTTCTGGAAGTGTGCT
 AAGTTCAATTATCCTGACTCCGAGGTTGCAGAGGCTGGCCGCTGCCTGGAAGTGTCTTTGAGGGCTGGT
 TGAAGGAGATCTACCCGGAGAAACGGTTTGCCAGCCAAGGCAGGAGGACTCAGACTCCGAGGAGGTGTC
 TAGTGAGAGTGGATGTTCACTCCCCAGGGCTTCCCGTGGCCTCCCTACATGCAGGAGGGCATCCAACCC
 AAGAGGCGGCAGCAGCATATGGAGAATGAAAGAGCAAAAAGAATGTCATTTGCTGCGCCAACAGCATCT
 CTCAGGTG

ACGCGTACGCGGCGCTCGAGCAGAACTCATCTCAGAAGAGGATCTGGCAGCAAATGATATCCTGGATT
 ACAAGGATGACGACGATAAGGTTTAA

Protein Sequence: >RC227892 representing NM_014818
 Red=Cloning site Green=Tags(s)

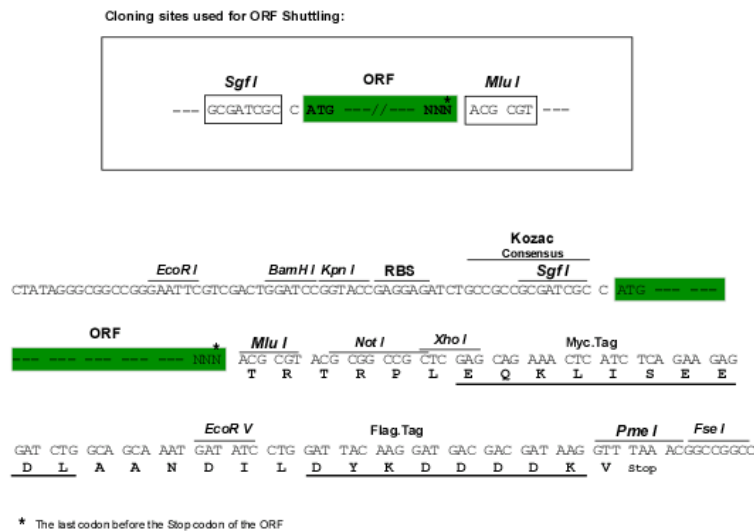
MARNCSCECKEKRAAHILCTYCNRWLCSSCTEEHRHSPVPGGPFPPRAQKGSPGVNGGPGDFTLYCPLHTQ
 EVLKLFCETCDMLTCHSCLVVEHKEHRCRHVEEVLQNQRMLLEGVTTQVAHKKSSLQTSAKQIEDRIFEV
 KHQHRKVENQIKMAKMLMNLNKQANGLIEELEGITNERKRRKLEQQLQSIMVLNRQFEHVQNFINWAVC
 SKTSVPFLFSKELIVFQMQRLLTSCNTDPGSPWSIRFTWEPNFWTKQLASLGCITTEGGQMSRADAPAY
 GGLQGSSPFYQSHQSPVAQQEALSHPSHKFQSPAVCCSSVCCSHCSPVPSLKGQVPPPSIHPAHSFRQP
 PEMVPQQLGSLQCSALLPREKELACSPHPPKLLQPWLETQPPVEQUESTSQRLLGQQLTSQPVCIVPPQDVQ
 QGAHAQPTLQTPSIQVQFGHHQKLKLSHFQQQPQQQLPPPPPLPHPPPLPPPPQPHPLPPSQHLS
 SQHESPPGPACSQNMIMHHKFELEEMQKDELLLLQAQQPSLQLSQTSPQHLQQTIVGQINYIVRQPAP
 VQSQSQEETLQATDEPPASQGSKPALPLDKNTAALPQASGEETPLSVPPVDSTIQHSSPNVVRKHSTSL
 SIMGFSNTLEMLSSSTRLERPLEPQIQSVSNLTAGAPQAVPSLLSAPPKMVSSLTSVQNQAMPSTTSHL
 QTVPSLVHSTFQSMPLISDSPQAMASLADHPQAGPSLMSGHTQAVPSLATCPLQSIIPVSDMQPETGS
 SSSSGRTSGSLCPRDGADPSLENALCKVKLEEPINLSVKKPLAPVVSTSTALQQYQNPKECENFEQAL
 ELDAKENQSIRAFNSEHKIPYVRLERLKICAASSGEMPVFKLPQKNDQDGSFLLIECGTESSMSIKV
 SQDRLSEATQAPGLEGRKVTVTSLAGQRPPEVEGTSPEEHRLIPRTPGAKKGPPAPIENEDFCVAVCLNGG
 ELLCCDRCPKVFHLSCHVPALLSFPGGWVCTLCRSLTQPEMEYDCENACYNQPGMRASPLSMYDQKKC
 EKLVLSLCCNNLSLPFHEPVSPLARHYQIIKRPMDLIIIRKLQKKDPAHYTTPEEVSDVRLMFWNCA
 KFNYPDSEVAEAGRCLEVFEGWLKEIYPEKRFAPRQEDSDSEEVSSSGCSTPQGFPWPPYMQEGIQP
 KRRRRHMENERAKRMSFRLANSISQV

TRTRPLEQKLISEEDLAANDILDYKDDDDKV

Chromatograms: https://cdn.origene.com/chromatograms/mk8037_c07.zip

Restriction Sites: SgfI-MluI

Cloning Scheme:

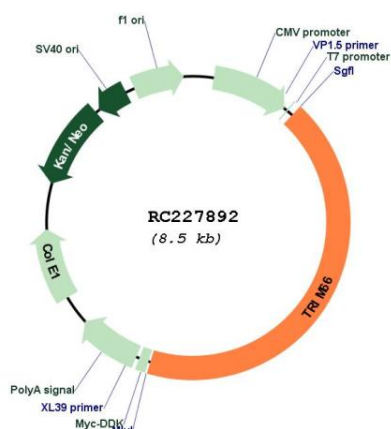


ACCN: NM_014818

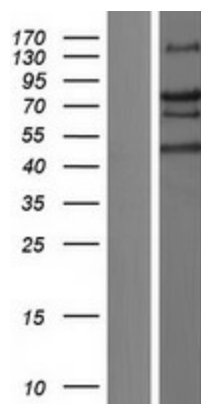
ORF Size: 3648 bp

OTI Disclaimer:	The molecular sequence of this clone aligns with the gene accession number as a point of reference only. However, individual transcript sequences of the same gene can differ through naturally occurring variations (e.g. polymorphisms), each with its own valid existence. This clone is substantially in agreement with the reference, but a complete review of all prevailing variants is recommended prior to use. More info
OTI Annotation:	This clone was engineered to express the complete ORF with an expression tag. Expression varies depending on the nature of the gene.
Components:	The ORF clone is ion-exchange column purified and shipped in a 2D barcoded Matrix tube containing 10ug of transfection-ready, dried plasmid DNA (reconstitute with 100 ul of water).
Reconstitution Method:	<ol style="list-style-type: none"> 1. Centrifuge at 5,000xg for 5min. 2. Carefully open the tube and add 100ul of sterile water to dissolve the DNA. 3. Close the tube and incubate for 10 minutes at room temperature. 4. Briefly vortex the tube and then do a quick spin (less than 5000xg) to concentrate the liquid at the bottom. 5. Store the suspended plasmid at -20°C. The DNA is stable for at least one year from date of shipping when stored at -20°C.
RefSeq:	NM_014818.2
RefSeq ORF:	3651 bp
Locus ID:	9866
UniProt ID:	O15016
Cytogenetics:	11p15.4
MW:	134.5 kDa
Gene Summary:	May function as transcription repressor; The repressive effects are mediated, at least in part, by recruitment of deacetylase activity. May play a role as negative regulator of postmeiotic genes acting through CBX3 complex formation and centromere association (By similarity). [UniProtKB/Swiss-Prot Function]

Product images:



Circular map for RC227892



Western blot validation of overexpression lysate (Cat# [LY429439]) using anti-DDK antibody (Cat# [TA50011-100]). Left: Cell lysates from untransfected HEK293T cells; Right: Cell lysates from HEK293T cells transfected with RC227892 using transfection reagent MegaTran 2.0 (Cat# [TT210002]).