

Product datasheet for **RC227890**

RPEL1 (NM_001143909) Human Tagged ORF Clone

Product data:

Product Type: Expression Plasmids
Product Name: RPEL1 (NM_001143909) Human Tagged ORF Clone
Tag: Myc-DDK
Symbol: RPEL1
Mammalian Cell Selection: Neomycin
Vector: pCMV6-Entry (PS100001)
E. coli Selection: Kanamycin (25 ug/mL)
ORF Nucleotide Sequence: >RC227890 representing NM_001143909
 Red=Cloning site Blue=ORF Green=Tags(s)

TTTTGTAATACGACTCACTATAGGGCGGCCGGAATTCGTCGACTGGATCCGGTACCGAGGAGATCTGCC
 GCC**CGATCGCC**

ATGGCGTCGGGCTGCAAGATTGGCCCGTCCATCCTCAACAGCGACCTGGCCAATTTAGGGGCCAAGTGCC
 TCCAGATGCTAGACTCTGGGGCCGATTATCTGCATCTGGATGTAATGGATGGGCATTTTGTCCCAACAT
 CACCTTTGGTCACCCTGTGGTAGAAAGCCTTCGAAAGCAGCTAGGCCAGGACCCTTTCTTTGACATGCAC
 ATGATGGTGTCCAAGCCAGAACAGTGGGTAAGCCAATGGCTGTAGCAGAAGCCAATCAGTACACCTTTC
 ATCTCGAGGCTACTGAGAACCAGGGACTTTGATTAAGACATTCGGGAGAATGGGATGAAGGTTGGCCT
 TGCCATCAAACAGGAACCTCAGTTGAGTATTTGGCACCATGGGCTAATCAAATAGATATGGCCTTGGTT
 ATGACAGTGGAACCGGGTTTGGAGAGCAGAAATTCATGGAAGATATGATGCCAAAGGTTCACTGGTTGA
 GGACCCAGTCCCATCTTTGGATATAGAGGGCGATGGTGGAGTAGGTTCTGACACTGTCCATAAGTGTGC
 AGAGGCAGGAGCTAACATGACTGTATCTGGCAGTGCTATTATGAGGAGTGAAGACCCAGATCTGTGATC
 AACCTATTAAGAAATATTTGCTCAGAAGCTGCTCAGAAACGTTCTCTTGATCGA

ACGCGTACGCGGCCGCTCGAGCAGAAACTCATCTCAGAAGAGGATCTGGCAGCAATGATATCTGGATT
 ACAAGGATGACGACGATAAGGTTTAA

Protein Sequence: >RC227890 representing NM_001143909
 Red=Cloning site Green=Tags(s)

MASGCKIGPSILNSDLANLGAKCLQMLDSGADYLHLDVMDGHFVPNITFGHPVVESLRKQLGQDPFFDMH
 MMVSKPEQWVKPMAVAEANQYTFHLEATENPGTLIKDIRENGMKVGLAIKPGTSVEYLAPWANQIDMALV
 MTVEPGFGEQKFMEDMMPKVHWRQTQFPSLDIEGDGGVGSQDTHKCAEAGANMTVSGSAIMRSEDPRSVI
 NLLRNICSEAAQKRSLDR

TRTRPLEQKLISEEDLAANDILDYKDDDDKV

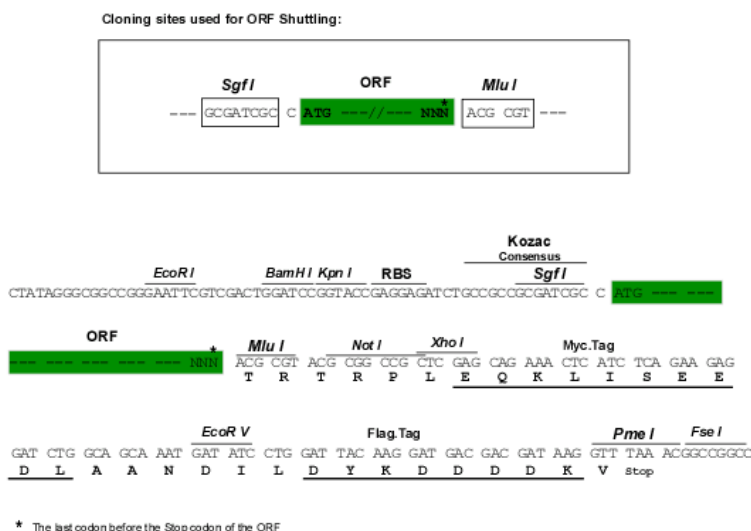


[View online »](#)

Chromatograms: https://cdn.origene.com/chromatograms/ja1515_a10.zip

Restriction Sites: SgfI-MluI

Cloning Scheme:



ACCN: NM_001143909

ORF Size: 684 bp

OTI Disclaimer: The molecular sequence of this clone aligns with the gene accession number as a point of reference only. However, individual transcript sequences of the same gene can differ through naturally occurring variations (e.g. polymorphisms), each with its own valid existence. This clone is substantially in agreement with the reference, but a complete review of all prevailing variants is recommended prior to use. [More info](#)

OTI Annotation: This clone was engineered to express the complete ORF with an expression tag. Expression varies depending on the nature of the gene.

Components: The ORF clone is ion-exchange column purified and shipped in a 2D barcoded Matrix tube containing 10ug of transfection-ready, dried plasmid DNA (reconstitute with 100 ul of water).

Reconstitution Method:

1. Centrifuge at 5,000xg for 5min.
2. Carefully open the tube and add 100ul of sterile water to dissolve the DNA.
3. Close the tube and incubate for 10 minutes at room temperature.
4. Briefly vortex the tube and then do a quick spin (less than 5000xg) to concentrate the liquid at the bottom.
5. Store the suspended plasmid at -20°C. The DNA is stable for at least one year from date of shipping when stored at -20°C.

RefSeq: [NM_001143909.1](#), [NP_001137381.1](#)

RefSeq ORF: 687 bp

Locus ID: 729020

UniProt ID: [Q2QD12](#)

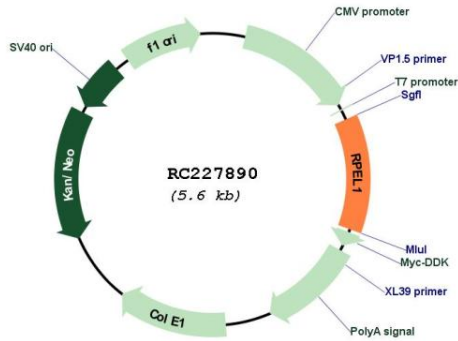
Cytogenetics: 10q24.33

Protein Pathways: Metabolic pathways, Pentose and glucuronate interconversions, Pentose phosphate pathway

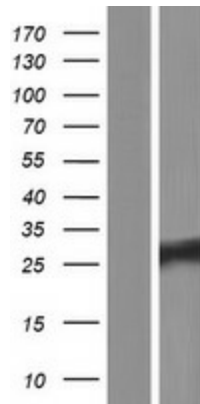
MW: 24.8 kDa

Gene Summary: Catalyzes the reversible epimerization of D-ribulose 5-phosphate to D-xylulose 5-phosphate. [UniProtKB/Swiss-Prot Function]

Product images:



Circular map for RC227890



Western blot validation of overexpression lysate (Cat# [LY428400]) using anti-DDK antibody (Cat# [TA50011-100]). Left: Cell lysates from untransfected HEK293T cells; Right: Cell lysates from HEK293T cells transfected with RC227890 using transfection reagent MegaTran 2.0 (Cat# [TT210002]).