

## Product datasheet for RC227888

### SSPN (NM\_001135823) Human Tagged ORF Clone

#### Product data:

Product Type:	Expression Plasmids
Product Name:	SSPN (NM_001135823) Human Tagged ORF Clone
Tag:	Myc-DDK
Symbol:	SSPN
Synonyms:	DAGA5; KRAG; NSPN; SPN1; SPN2
Mammalian Cell Selection:	Neomycin
Vector:	pCMV6-Entry (PS100001)
E. coli Selection:	Kanamycin (25 ug/mL)
ORF Nucleotide Sequence:	>RC227888 representing NM_001135823 Red=Cloning site Blue=ORF Green=Tags(s)

TTTTGTAATACGACTCACTATAGGGCGGCCGGAATTCGTCGACTGGATCCGGTACCGAGGAGATCTGCC  
 GCCCGCATCGCC

ATGGGCAAGAACAAGCAGCCACGCGGCCAGCAGAGGCAGGGGGGCGCCGCGCGGACGCCGCTGGGC  
 CCGACGACATGGAGCCGAAGAAGGGCACGGGGGCCCCAAGGAGTGCGGGGAGGAGAGCCCCGGACCTG  
 CTGCGGCTGCCGTTCCCGCTGCTGCTCGCCCTGCTGCAGCTGGCCCTGGGCATCGCCGTGACCGTGGTG  
 GGCTTCCTCATGGCGAGCATCAGCTCCTCCCTGCTAGTCAGGGACACTCCATTTTGGGCTGGGATCATTG  
 TCTGCTTAGTGGCCTATCTTGGCTTGTATGCTTTGTGTCTCATATCAGGTTGACGAACGGACATGTAT  
 TCAATTTTCTATGAAACTGTTATACTTTCTGCTGAGTGCCCTGGGCTGACGGTCTGTGTGCTGGCCGTG  
 GCCTTTGCCGCCACCACTATTTCGAGCTCACACAGTTTACCTGTGAGACCACACTCGACTCTTGCCAGT  
 GCAAACAGCCCTCCTCGGAGCCGCTCAGCAGGACCTTTGTTTACCGGGATGTGACGGACTGTACCAGCGT  
 CACTGGCACTTTCAAACGTCTTACTCATCCAGATGATTCTTAATTTGGTCTGCGGCCTTGTGTGCTTG  
 TTGGCCTGCTTTGTGATGTGAAACATAGGTACCAGGTCTTCTATGTGGGTGTCAGGATATGCTCCCTCA  
 CGGCTTCCGAAGGCCCCAGCAAAGATC

ACGCGTACGCGGCCGCTCGAGCAGAACTCATCTCAGAAGAGGATCTGGCAGCAAATGATATCCTGGATT  
 ACAAGGATGACGACGATAAGGTTTAA


[View online »](#)

**Protein Sequence:** >RC227888 representing NM\_001135823  
 Red=Cloning site Green=Tags(s)

MGKNKQPRGQQRQGGPPAADAAGPDDMEPKKGTGAPKECGEEEPRTCCGCRFPLLLALLQLALGIAVTVV  
 GFLMASISSLLVRDTPFWAGIIVCLVAYLGLFMLCVSYQVDERTCIQFSMKLLYFLLSALGLTVCVLAV  
 AFAAHYSQLTQFTCETTLDSQCQLPSSEPLSRTFVYRDVTDCTSVTGTGFKLLIQMILNLVCGLVCL  
 LACFVMWKHRYQVFYVGVIRICSLTASEGPQQKI

TRTRPLEQKLISEEDLAANDILDYKDDDDKV

**Chromatograms:** [https://cdn.origene.com/chromatograms/ja1447\\_c02.zip](https://cdn.origene.com/chromatograms/ja1447_c02.zip)

**Restriction Sites:** SgfI-MluI

**Cloning Scheme:**



**ACCN:** NM\_001135823

**ORF Size:** 729 bp

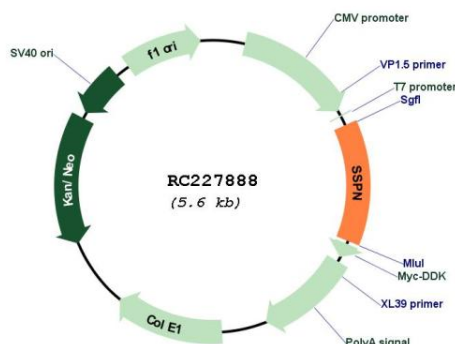
**OTI Disclaimer:** The molecular sequence of this clone aligns with the gene accession number as a point of reference only. However, individual transcript sequences of the same gene can differ through naturally occurring variations (e.g. polymorphisms), each with its own valid existence. This clone is substantially in agreement with the reference, but a complete review of all prevailing variants is recommended prior to use. [More info](#)

**OTI Annotation:** This clone was engineered to express the complete ORF with an expression tag. Expression varies depending on the nature of the gene.

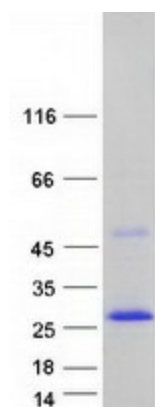
**Components:** The ORF clone is ion-exchange column purified and shipped in a 2D barcoded Matrix tube containing 10ug of transfection-ready, dried plasmid DNA (reconstitute with 100 ul of water).

<b>Reconstitution Method:</b>	<ol style="list-style-type: none"> <li>1. Centrifuge at 5,000xg for 5min.</li> <li>2. Carefully open the tube and add 100ul of sterile water to dissolve the DNA.</li> <li>3. Close the tube and incubate for 10 minutes at room temperature.</li> <li>4. Briefly vortex the tube and then do a quick spin (less than 5000xg) to concentrate the liquid at the bottom.</li> <li>5. Store the suspended plasmid at -20°C. The DNA is stable for at least one year from date of shipping when stored at -20°C.</li> </ol>
<b>RefSeq ORF:</b>	423 bp
<b>Locus ID:</b>	8082
<b>UniProt ID:</b>	<a href="#">Q14714</a>
<b>Cytogenetics:</b>	12p12.1
<b>Protein Families:</b>	Druggable Genome, Transmembrane
<b>MW:</b>	26.62 kDa
<b>Gene Summary:</b>	<p>This gene encodes a member of the dystrophin-glycoprotein complex (DGC). The DGC spans the sarcolemma and is comprised of dystrophin, syntrophin, alpha- and beta-dystroglycans and sarcoglycans. The DGC provides a structural link between the subsarcolemmal cytoskeleton and the extracellular matrix of muscle cells. Two alternatively spliced transcript variants that encode different protein isoforms have been described. [provided by RefSeq, Oct 2008]</p>

## Product images:



Circular map for RC227888



Coomassie blue staining of purified SSPN protein (Cat# [TP327888]). The protein was produced from HEK293T cells transfected with SSPN cDNA clone (Cat# RC227888) using MegaTran 2.0 (Cat# [TT210002]).