

Product datasheet for **RC227880**

CACNB4 (NM_001145798) Human Tagged ORF Clone

Product data:

Product Type:	Expression Plasmids
Product Name:	CACNB4 (NM_001145798) Human Tagged ORF Clone
Tag:	Myc-DDK
Symbol:	CACNB4
Synonyms:	CAB4; CACNLB4; EA5; EIG9; EJM; EJM4; EJM6
Mammalian Cell Selection:	Neomycin
Vector:	pCMV6-Entry (PS100001)
E. coli Selection:	Kanamycin (25 ug/mL)



[View online »](#)

ORF Nucleotide Sequence:

>RC227880 representing NM_001145798
 Red=Cloning site Blue=ORF Green=Tags(s)

TTTTGTAATACGACTCACTATAGGGCGGCCGGAATTCGTCGACTGGATCCGGTACCGAGGAGATCTGCC
 GCC**CGATCGCC**

ATGTCCTCCTCCTACGCCAAGAACGGGACCGCGGACGGCCGCACTCCCCACCTCGCAGGTGGCCC
 GAGGCACCACAACCCGGAGGAGCAGTTGAAAAGATCCGATGGCAGCACCACTTCGACCAGCTTCATCCT
 CAGACAGGGTTCAGCGGATTCCTACACAAGCAGCCGTCTGACTCCGATGTCTTTTGAAGAGGACCGG
 GAAGCAATTCGACAGGAGAGAGAACAGCAAGCAGCTATCCAGCTTGAGAGAGCAAAGTCCAAACCTGTAG
 CATTTGCCGTGAAGACAAATGTGAGCTACTGCGGCGCCCTGGACGAGGATGTGCCTGTTCCAAGCACAGC
 TATCTCCTTTGATGCTAAAGACTTTCTACATATTAAGAGAAAATAACAATGATTGGTGGATAGGAAGG
 CTGGTAAAGAGGGCTGTGAAATGGCTTCATTCCAAGTCCACTCAGATTGGAGAACATACGGATCCAGC
 AAGAACAAAAAGAGGACGTTTTACGGAGGGAAATCAAGTGAAATCTTCTTCAAGTCTTGAGAAAT
 GGTATCTGGGACATTCGAGCAACTCCACATCAACAGCAAAACAGAAGCAAAAAGTGACGGAGCACATT
 CCTCCTTACGATGTTGTACCGTCAATGCGTCCGGTGGTGTAGTGGGGCCGTCACTGAAAGGTTACGAGG
 TAACAGACATGATGCAGAAAGCCCTCTTTGATTCCTGAAGCACAGGTTTGTGGAGGATTTCAATAAC
 GAGAGTGACAGCTGACATTTCTTGTAAAGAGTCTGTCTTAAATAATCCCAGCAAGAGAGCAATAATT
 GAACGTTTGAACACCCGGTCCAGCTTAGCGGAAGTACAAAGTAAATGAAAGAAATCTTTGAGTTGGCAA
 GATCTTTGCAACTGGTTGTTCTTGTGACAGACACCATCAATCACCCAGCACAACTTATAAAGACTTCCTT
 AGCACCAATTATTGTTTCAATGAAAAGTCTCATCTCAAAGGTTTTACAGCGTTGATTAATCTAGAGGA
 AAGTCACAAAGTAAACACTTGAATGTTCAACTGGTGGCAGCTGATAAACTGCACAATGCCCCCAAGTC
 AGCGAATGAGGCACAGCAACCACTCCACAGAGAACTCTCAATTGAAAGACGAAGTCTAATGACCTCTGA
 TAAAAATTATACAATGAAAGGGCTCGGAAGAGTAGGAACCGCTTGTCTTCCAGTTCTCAGCATAGCCGA
 GATCATTACCCTCTTGTGGAAGAAGATTACCCTGACTCATACCAGGACACTTACAAACCCATAGGAACC
 GAGGATCACCTGGGGATATAGCCATGACTCCCGACATAGGCTT

ACGCGTACGCGGCCGCTCGAGCAGAAACTCATCTCAGAAGAGGATCTGGCAGCAAATGATATCCTGGATT
 ACAAGGATGACGACGATAAGGTTTAA

Protein Sequence:

>RC227880 representing NM_001145798
 Red=Cloning site Green=Tags(s)

MSSSSYAKNGTADGPHSPTSQVARGTTTRRSRLKRS DGSTTSTSFILRQGSADSYTSRPSDSVLSLEEDR
 EAIRQEREQAAIQLERAKSKPVAVKTNVSYCGALDEDVVPVSTAI SFDKDFLHIKEKYNNDDWWIGR
 LVKEGCEIGFIPSPRLLENIRIQEQKRGRFHGGKSSGNSSSSLGEMVSGTFRATPTSTAKQKQKVTEHI
 PPYDVVPSMRPVVLVGP SLKGYEVTMMQKALFDLKHFRFDGRISITRVTADISLAKRSVLNNSPKRAII
 ERSNTRSSLAEVQSEIERIFELARSLQLVVL DADTINHQAQLIKTSLAPIIVHVKVSSPKVLQRLIKSRG
 KSQSKHLNVQLVAADKLAQCPPSQMRHSNHSTENSPIERRSLMTSDENYHNERARKSRNRLSSSSQHSR
 DHYPLVEEDYPDSYQDITYKPHRNRGSPGGYSHDSRHRL

TRTRPLEQKLISEEDLAANDILDYKDDDDKV

Chromatograms:

https://cdn.origene.com/chromatograms/mk8061_d02.zip

Restriction Sites:

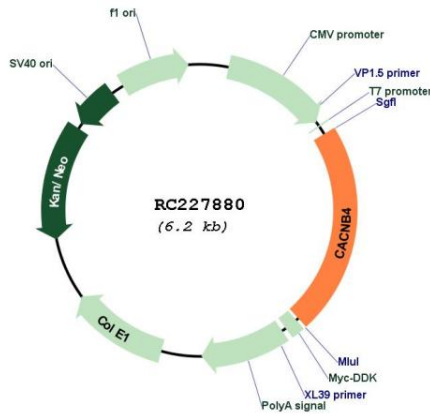
Sgfl-Mlul

Protein Pathways: Arrhythmogenic right ventricular cardiomyopathy (ARVC), Cardiac muscle contraction, Dilated cardiomyopathy, Hypertrophic cardiomyopathy (HCM), MAPK signaling pathway

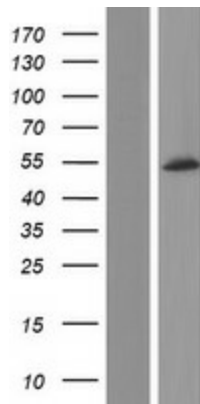
MW: 51.2 kDa

Gene Summary: This gene encodes a member of the beta subunit family of voltage-dependent calcium channel complex proteins. Calcium channels mediate the influx of calcium ions into the cell upon membrane polarization and consist of a complex of alpha-1, alpha-2/delta, beta, and gamma subunits in a 1:1:1:1 ratio. Various versions of each of these subunits exist, either expressed from similar genes or the result of alternative splicing. The protein encoded by this locus plays an important role in calcium channel function by modulating G protein inhibition, increasing peak calcium current, controlling the alpha-1 subunit membrane targeting and shifting the voltage dependence of activation and inactivation. Certain mutations in this gene have been associated with idiopathic generalized epilepsy (IGE), juvenile myoclonic epilepsy (JME), and episodic ataxia, type 5. [provided by RefSeq, Aug 2016]

Product images:



Circular map for RC227880



Western blot validation of overexpression lysate (Cat# [LY429012]) using anti-DDK antibody (Cat# [TA50011-100]). Left: Cell lysates from untransfected HEK293T cells; Right: Cell lysates from HEK293T cells transfected with RC227880 using transfection reagent MegaTran 2.0 (Cat# [TT210002]).