

Product datasheet for **RC227878**

MX1 (NM_001144925) Human Tagged ORF Clone

Product data:

Product Type:	Expression Plasmids
Product Name:	MX1 (NM_001144925) Human Tagged ORF Clone
Tag:	Myc-DDK
Symbol:	MX1
Synonyms:	IFI-78K; IFI78; IncMX1-215; MX; MxA
Mammalian Cell Selection:	Neomycin
Vector:	pCMV6-Entry (PS100001)
E. coli Selection:	Kanamycin (25 ug/mL)



[View online »](#)

ORF Nucleotide
Sequence:

>RC227878 representing NM_001144925
Red=Cloning site Blue=ORF Green=Tags(s)

TTTTGTAATACGACTCACTATAGGGCGGCCGGAATTCGTCGACTGGATCCGGTACCGAGGAGATCTGCC
GCCGCGATCGCC

ATGTTTGTTCGGAAGTGGACATCGAAAAGCTGATCCAGCTGCTGCATCCCACCCTCTATTACTGAATG
GAGATGCTACTGTGGCCAGAAAAATCCAGGCTCGGTGGCTGAGAACAACCTGTGCAGCCAGTATGAGGA
GAAGGTGCGCCCTGCATCGACCTCATTGACTCCCTGCGGGCTCTAGGTGTGGAGCAGGACCTGGCCCTG
CCAGCCATCGCCGTCATCGGGGACCAGAGCTCGGGCAAGAGCTCCGTGTTGGAGGCACTGTCAGGAGTTG
CCCTTCCAGAGGCAGCGGGATCGTGACCAGATGCCCGCTGGTGTGAACTGAAGAACTTGTGAACGA
AGATAAGTGGAGAGGCAAGGTCAAGTACCAGGACTACGAGATTGAGATTCGGATGCTTCAGAGGTAGAA
AAGGAAATTAATAAGGCCAGAATGCCATCGCCGGGAAGGAATGGGAATCAGTCATGAGCTAATCACCC
TGGAGATCAGCTCCGAGATGTCCGGATCTGACTCTAATAGACCTTCTGGCATAACCAGAGTGGCTGT
GGCAATCAGCTGCTGACATTGGGTATAAGATCAAGACTCATCAAGAAGTACATCCAGAGGCAGGAG
ACAATCAGCCTGGTGGTGGTCCCAAGTAATGTGGACATTGCCACCACAGAGGCTCTCAGCATGGCCAGG
AGGTGGACCCCGAGGGAGACAGGACCATCGAATCTTGACGAAGCCTGATCTGGTGGACAAGGAACTGA
AGACAAGTGTGGACGTGGTGCAGAACCTCGTGTCCACCTGAAGAAGGTTACATGATTGTCAAGTGC
CGGGGCCAGCAGGAGATCCAGGACCAGCTGAGCCTGTCCGAAGCCCTGCAGAGAGAGAAGATCTTCTTTG
AGAACCACCCATATTTCAAGGATCTGCTGGAGGAAGGAAAGGCCACGGTTCCTGCCTGGCAGAAAACT
TACCAGCGAGCTCATCACATATCTGTAATCTCTGCCCTGTTAGAAAATCAAATCAAGGAGACTCAC
CAGAGAATAACAGAGGAGCTACAAAAGTATGGTGTGACATACCGGAAGACGAAAATGAAAAATGTTCT
TCCTGATAGATAAAAATTAATGCCTTTAATCAGGACATCACTGCTCTCATGCAAGGAGAGGAACTGTAGG
GGAGGAAGACATTCGGCTGTTTACCAGACTCCGACACGAGTTCACAAAATGGAGTACAATAATTGAAAAC
AATTTTCAAGAAGGCCATAAAAATTTGAGTAGAAAAATCCAGAAAATTTGAAAATCAGTATCGTGGTAGAG
AGCTGCCAGGCTTTGTGAATTACAGGACATTTGAGACAATCGTGAACAGCAAATCAAGGCACTGGAAGA
GCCGGCTGTGGATATGCTACACACCGTGACGGATATGGTCCGGCTTGCTTTCACAGATGTTTCGATAAAA
AATTTTGAAGAGTTTTTTAACCTCCACAGAACCAGCAAGTCCAAAATGAAGACATTAGAGCAGAACAAG
AGAGAGAAGGTGAGAAGCTGATCCGCCTCCACTCCAGATGGAACAGATTGTCTACTGCCAGGACCAGGT
ATACAGGGGTGCATTGCAGAAGGTGAGAGAGAAGGAGCTGGAAGAAGAAAAGAAGAAGAAATCCTGGGAT
TTTGGGGCTTTCCAATCCAGCTCGCAACAGACTTCCATGGAGGAGATCTTTCAGCACCTGATGGCCT
ATCACCAGGAGGCCAGCAAGCGCATCTCCAGCCACATCCCTTTGATCATCCAGTTCTTCATGCTCCAGAC
GTACGGCCAGCAGCTTCAGAAGGCCATGCTGCAGCTCCTGCAGGACAAGGACACCTACAGCTGGCTCCTG
AAGGAGCGGAGCGACACCAGCGACAAGCGGAAGTTCCTGAAGGAGCGGCTTGACGGCTGACGCAGGCTC
GGCGCCGGCTTGCCCAAGTTCCTCCGGT

ACGCGTACGCGGCCGCTCGAGCAGAACTCATCTCAGAAGAGGATCTGGCAGCAAATGATATCCTGGATT
ACAAGGATGACGACGATAAGGTTTAA

Protein Sequence: >RC227878 representing NM_001144925
 Red=Cloning site Green=Tags(s)

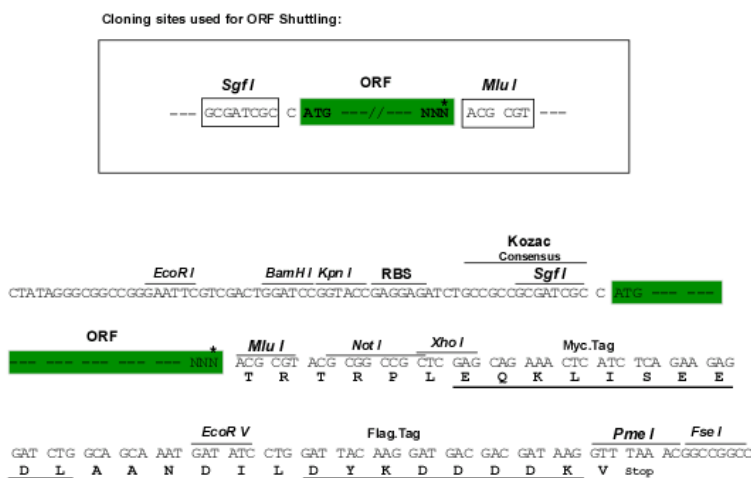
```
MVQSEVDIAKADPAAASHPLLLNGDATVAQKNPGSVAENNLCSQYEEKVVRPCIDLIDSLRALGVEQDLAL
PAIAVIGDQSSGKSSVLEALSGVALPRGSGIVTRCPLVLKLKLVNEDKWRGKVSQDYEIEISDASEVE
KEINKAQNAIAGEGMGISHELITLIESSRDVPDLTLIDLPGITRVAVGNQPADIGYKIKTLIKKYIQRQE
TISLVVPSNVDIATTEALSMAQEVDPEGDRITIGILTKPDLVDKGTEDKVVDVVRNLVFHLKKGMIKVC
RGQQEIQDQLSLSEALQREKIFFENHPYFRDILLEEGKATVPCLAELKLTSELITHICKSLPLENQIKETH
QRITEELQKYGVDIPEDENEKMFFLIDKINAFNQDITALMQGEETVGEEDIRLFTRLRHEFHKWTIIEN
NFQEGHKILSRKIQKFNQYRGRELPGFVNYRTFETIVKQKIKALEEPAVDMHTVDMVRLAFTDVSIIK
NFEFFNLHRTAKSKIEDIRAEQEREKEKLIRLHFQMEQIVYQDQVYRGALQKVREKELEEEKKKSWD
FGAFQSSSATDSSMEEIFQHLMAYHQEASKRISSHIPLIIQFFMLQTYGQQLQKAMLQLLQDKDTYSWLL
KERSDTSKRFKLERLARLTQARRRLAQFPG
```

TRTRPLEQKLI SEEDLAANDILDYKDDDDKV

Chromatograms: https://cdn.origene.com/chromatograms/mg3672_c05.zip

Restriction Sites: Sgfl-MluI

Cloning Scheme:



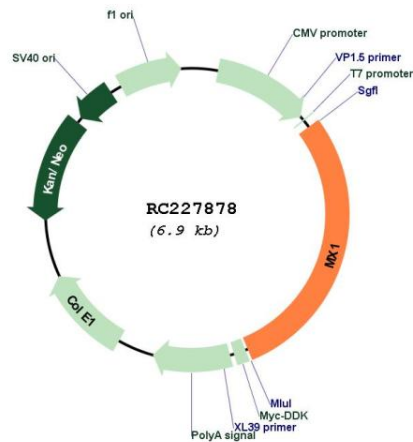
* The last codon before the Stop codon of the ORF

ACCN: NM_001144925

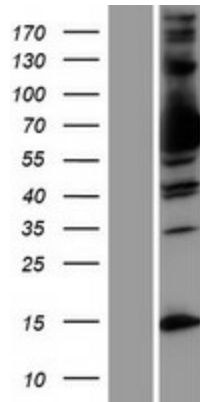
ORF Size: 1986 bp

OTI Disclaimer:	<p>Due to the inherent nature of this plasmid, standard methods to replicate additional amounts of DNA in E. coli are highly likely to result in mutations and/or rearrangements. Therefore, OriGene does not guarantee the capability to replicate this plasmid DNA. Additional amounts of DNA can be purchased from OriGene with batch-specific, full-sequence verification at a reduced cost. Please contact our customer care team at custsupport@origene.com or by calling 301.340.3188 option 3 for pricing and delivery.</p> <p>The molecular sequence of this clone aligns with the gene accession number as a point of reference only. However, individual transcript sequences of the same gene can differ through naturally occurring variations (e.g. polymorphisms), each with its own valid existence. This clone is substantially in agreement with the reference, but a complete review of all prevailing variants is recommended prior to use. More info</p>
OTI Annotation:	<p>This clone was engineered to express the complete ORF with an expression tag. Expression varies depending on the nature of the gene.</p>
Components:	<p>The ORF clone is ion-exchange column purified and shipped in a 2D barcoded Matrix tube containing 10ug of transfection-ready, dried plasmid DNA (reconstitute with 100 ul of water).</p>
Reconstitution Method:	<ol style="list-style-type: none">1. Centrifuge at 5,000xg for 5min.2. Carefully open the tube and add 100ul of sterile water to dissolve the DNA.3. Close the tube and incubate for 10 minutes at room temperature.4. Briefly vortex the tube and then do a quick spin (less than 5000xg) to concentrate the liquid at the bottom.5. Store the suspended plasmid at -20°C. The DNA is stable for at least one year from date of shipping when stored at -20°C.
RefSeq:	<p>NM_001144925.2, NP_001138397.1</p>
RefSeq ORF:	<p>1989 bp</p>
Locus ID:	<p>4599</p>
UniProt ID:	<p>P20591</p>
Cytogenetics:	<p>21q22.3</p>
Protein Families:	<p>Druggable Genome</p>
MW:	<p>75.3 kDa</p>
Gene Summary:	<p>This gene encodes a guanosine triphosphate (GTP)-metabolizing protein that participates in the cellular antiviral response. The encoded protein is induced by type I and type II interferons and antagonizes the replication process of several different RNA and DNA viruses. There is a related gene located adjacent to this gene on chromosome 21, and there are multiple pseudogenes located in a cluster on chromosome 4. Alternative splicing results in multiple transcript variants. [provided by RefSeq, Sep 2013]</p>

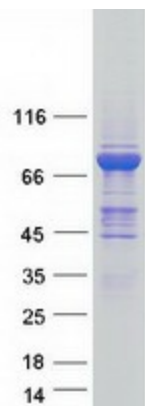
Product images:



Circular map for RC227878



Western blot validation of overexpression lysate (Cat# [LY428580]) using anti-DDK antibody (Cat# [TA50011-100]). Left: Cell lysates from untransfected HEK293T cells; Right: Cell lysates from HEK293T cells transfected with RC227878 using transfection reagent MegaTran 2.0 (Cat# [TT210002]).



Coomassie blue staining of purified MX1 protein (Cat# [TP327878]). The protein was produced from HEK293T cells transfected with MX1 cDNA clone (Cat# RC227878) using MegaTran 2.0 (Cat# [TT210002]).