

Product datasheet for **RC227866**

NEDD4 2 (NEDD4L) (NM_001144964) Human Tagged ORF Clone

Product data:

Product Type:	Expression Plasmids
Product Name:	NEDD4 2 (NEDD4L) (NM_001144964) Human Tagged ORF Clone
Tag:	Myc-DDK
Symbol:	NEDD4 2
Synonyms:	hNEDD4-2; NEDD4-2; NEDD4.2; PVNH7; RSP5
Mammalian Cell Selection:	Neomycin
Vector:	pCMV6-Entry (PS100001)
E. coli Selection:	Kanamycin (25 ug/mL)



[View online »](#)

ORF Nucleotide Sequence:

>RC227866 representing NM_001144964
 Red=Cloning site Blue=ORF Green=Tags(s)

TTTTGTAATACGACTCACTATAGGGCGGCCGGGAATTCGTCGACTGGATCCGGTACCGAGGAGATCTGCC
 GCC**CGCATCGCC**

ATGGAGCGACCCTATACATTTAAGGACTTCTCCTCAGACCAAGAAGTCATAAGTCTCGAGTTAAGGGAT
 TTTTGCATTGAAAATGGCCTATATGCCAAAAATGGAGGTCAAGATGAAGAAAACAGTGACCAGAGGGA
 TGACATGGAGCATGGATGGGAAGTTGTTGACTCAAATGACTCGGCTTCTCAGCACCAAGAGGAATTCCT
 CCTCCTCCTCGCTCCCGGGTGGGAAGAAAAGTGGACAATTTAGGCCGAATTAATGTCAACCACA
 ACAACCGGACCACTCAGTGGCACAGACCAAGCCTGATGGACGTGTCTCGGAGTCGGACAATAACATCAG
 ACAGATCAACCAGGAGGCAGCACACCGGCGCTTCCGCTCCCGCAGGCACATCAGCGAAGACTTGGAGCCC
 GAGCCCTCGGAGGGCGGGATGTCCCGAGCCTTGGGAGACCATTCAGAGGAAGTGAATATCGCTGGAG
 ACTCTCTCGGTCTGGCTCTGCCCCACCACCGGCTCCCGAGGATCTCGGACCAGCCCTCAGGAGCTGTC
 AGAGGAACATAAGCAGAAGGCTTCAGATCACTCCAGACTCCAATGGGGAACAGTTCAGCTCTTTGATTCAA
 AGAGAACCCTCCTCAAGTTGAGGTTCAGTGTCCAGGACGAGTTCAGAGAACAGGGCCATCTACCAC
 CGCCCACTGCCAGCTGGGAGAGCGCGTTCATCAACTGTCACGGGTGGTGGAGGAACCAACGCCATCAGT
 GGCCATATGTACATACCACGCCGGTCTGCCTTCAGGCTGGGAAGAAAAGAAAAGTGTAAAGGGGCGCACA
 TACTATGTCAATCATAACAATCGAACCAACTTGGACTCGACCTATCATGCAGCTTGCAGAAGATGGTG
 CGTCCGGATCAGCCACAAACAGTAACAACCATCTAATCGAGCCTCAGATCCGCCGGCCTCGTAGCCCTCAG
 CTCGCCAACAGTAACCTTATCTGCCCGCTGGAGGGTGGCAAGGACTCACCCGTACGTGGGCTGTGAAA
 GACACCCCTTCCAACCCACAGTCCCCACAGCCATCACCTTACAACCTCCCCAACCCACAACACAAAGTCA
 CACAGACTTCTTGCACCCGGCTGGGAATGAGGATAGCGCCAAACGGCCGGCCCTTCTCATTGATCA
 TAACACAAAGACTACAACCTGGGAAGATCCACGTTTGAATTTCCAGTACATATGCGGTCAAAGACATCT
 TTAACCCCAATGACCTTGGCCCTTCTCCTGGCTGGGAAGAAAAGAAATTCAGTGGATGGCCGAACGT
 TTTATATTGATCATAATAGCAAAATTAAGTGGGAAGACCCAAAGACTGCAGAACCAGCTATTACTGG
 TCCGGCTGTCCCTTACTCCAGAGAATTTAAGCAGAAATATGACTACTTCAGGAAGAAATTAAGAAACCT
 GCTGATATCCCCAATAGGTTTGAATGAAACTTACAGAAATAACATATTTGAAGAGTCTATCGGAGAA
 TTATGTCCGTGAAAAGACCAGATGTCCTAAAAGCTAGACTGTGGATTGAGTTTGAATCAGAGAAAGGTCT
 TGACTATGGGGTGTGGCCAGAGAATGGTCTTCTTACTGTCAAAGAGATGTTCAACCCCTACTACGGC
 CTCTTTGAGTACTCTGCCACGGACAACACACCCTTACAGTCAACCCTAATTCAGGCCTCTGTAATGAGG
 ATCATTGTCTACTTCACTTTTATTGGAAGAGTTGCTGGTCTGGCCGATTTTCATGGGAAGCTCTTAGA
 TGGTTTCTTATTAGACCATTTACAAGATGATGTTGGGAAGCAGATAACCCTGAATGACATGGAATCT
 GTGGATAGTGAATATTACAACCTTTGAAATGGATCCTGGAGAATGACCTACTGAGCTGGACCTCATGT
 TCTGCATAGACGAAGAAAACCTTTGGACAGACATATCAAGTGGATTTGAAGCCCAATGGGTGAGAAATAAT
 GGTCAAAATGAAAACAAAAGGGAATATATCGACTTAGTCATCCAGTGGAGATTTGTGAACAGGGTCCAG
 AAGCAGATGAACGCCTTCTTGGAGGGATTCACAGAACTACTTCTATTGATTTGATTAATTTTGGATG
 AAAATGAGCTGGAGTTGCTCATGTGCGGCTCGGTGATGTGGATGTGAATGACTGGAGACAGCATTCTAT
 TTACAAGAACGGCTACTGCCAAACACCCCGTATTGAGTGGTCTGGAAGGCTGTGCTACTCATGGAC
 GCCGAAAAGCGTATCCGGTTACTGCAGTTTGTACAGGGACATCGCGAGTACCTATGAATGGATTTGCCG
 AACTTTATGGTTCCAATGGTCTCAGCTGTTTACAATAGAGCAATGGGGCAGTCTGAGAAAAGTCCCGAG
 AGCTCACACATGCTTTAATCGCCTTGAATACCTCCATATGAAACCTTTGAAGATTTACGAGAGAAACTT
 CTCATGGCCGTGGAAAATGCTCAAGGATTTGAAGGGTGGAT

ACCGTACGGCGCGCTCGAGCAGAAACTCATCTCAGAAGAGGATCTGGCAGCAATGATATCCTGGATT
 ACAAGGATGACGACGATAAGGTTTAA

Protein Sequence: >RC227866 representing NM_001144964
 Red=Cloning site Green=Tags(s)

MERP YTFKDFLLRPRSHKSRVKGFLRLK MAYMPKNGGQDEENS DQRDDMEHGWEVVDSDNSASQHQEELP
 PPPLPGWEEKVDNLGRYYVNHNNRTTQWHRPSLMDVSESDNNIRQINQEAHRRFRSRRHISEDLEP
 EPSEGGDVPEPWETISEEVNIAGDSLGLALPPPASPGRSRTSPQELSEELSRRLQITPDSNGEQFSSLIQ
 REPSSRLRSCSVTDAVAEQGHLPPSPAPAGRARSSTVTGGEEPTPSVAYVHTTGPLSGWEERKDAKGR
 YYVNHNNRTTTWTRPIMQLAEDGASGSATNSNNHLIEPQIRRPRLSSPTVTL SAPLEGAKDSPVRRRAVK
 DTL SNPQSPQSPYNPKPQHVKVTSFSLPPGWEMRIAPNGRPFIDHNTKTTT WEDPRLKFPVHMRSKTS
 LNPNDLGPLPPGWEERIHLDGRTFYIDHNSKITQWEDPRLQNP AITGPAVPYSREFKQKYDYFRKLLKPK
 ADIPNRFEMKLRNNIFEESYRRIMSVKRPDVLKARLWIEFESEKGLDYGGVAREWFFLLSKEMFNYYG
 LFEYSATDNYTLQINPNSGLCNEDHLSYFTFIGRVAGLAVFHGKLLDGGFFIRPFYKMLLGKQITLNDMES
 VDSEYYNSLKWILENDPTELDLMF CIDEENFGQTYQVDLKPNGSEIMVTNENKREYIDLVIQWRFVNRVQ
 KQMNAFLEGFTELLPIDLIKIFDENELELLMCGLGDVDVNDWRQHSIYKNGYCPNHPVIQWFWKAVLLMD
 AEKRIRLLQFVTGTSRVP MNGFAELYGSNGPQLFTIEQWGSPEKLPRAHTCFNRLLDPPYETFEDLREKL
 LMAVENAQGFEGVD

TRTRPLEQKLISEEDLAANDILDYKDDDDKV

Chromatograms: https://cdn.origene.com/chromatograms/mk8102_g12.zip

Restriction Sites: SgfI-MluI

Cloning Scheme:

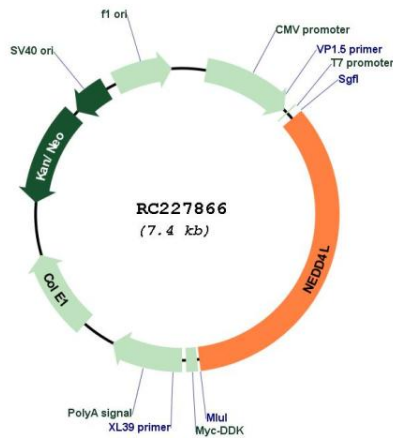
Cloning sites used for ORF Shuttling:



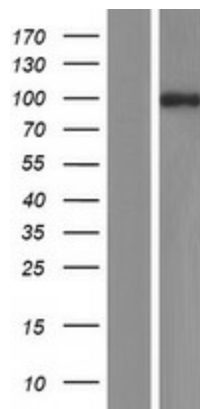
* The last codon before the Stop codon of the ORF

ACCN:	NM_001144964
ORF Size:	2562 bp
OTI Disclaimer:	The molecular sequence of this clone aligns with the gene accession number as a point of reference only. However, individual transcript sequences of the same gene can differ through naturally occurring variations (e.g. polymorphisms), each with its own valid existence. This clone is substantially in agreement with the reference, but a complete review of all prevailing variants is recommended prior to use. More info
OTI Annotation:	This clone was engineered to express the complete ORF with an expression tag. Expression varies depending on the nature of the gene.
Components:	The ORF clone is ion-exchange column purified and shipped in a 2D barcoded Matrix tube containing 10ug of transfection-ready, dried plasmid DNA (reconstitute with 100 ul of water).
Reconstitution Method:	<ol style="list-style-type: none">1. Centrifuge at 5,000xg for 5min.2. Carefully open the tube and add 100ul of sterile water to dissolve the DNA.3. Close the tube and incubate for 10 minutes at room temperature.4. Briefly vortex the tube and then do a quick spin (less than 5000xg) to concentrate the liquid at the bottom.5. Store the suspended plasmid at -20°C. The DNA is stable for at least one year from date of shipping when stored at -20°C.
RefSeq:	NM_001144964.1 , NP_001138436.1
RefSeq Size:	8436 bp
RefSeq ORF:	2565 bp
Locus ID:	23327
UniProt ID:	Q96PU5
Cytogenetics:	18q21.31
Protein Families:	Druggable Genome
Protein Pathways:	Endocytosis, Ubiquitin mediated proteolysis
MW:	98.2 kDa
Gene Summary:	This gene encodes a member of the Nedd4 family of HECT domain E3 ubiquitin ligases. HECT domain E3 ubiquitin ligases transfer ubiquitin from E2 ubiquitin-conjugating enzymes to protein substrates, thus targeting specific proteins for lysosomal degradation. The encoded protein mediates the ubiquitination of multiple target substrates and plays a critical role in epithelial sodium transport by regulating the cell surface expression of the epithelial sodium channel, ENaC. Single nucleotide polymorphisms in this gene may be associated with essential hypertension. Alternatively spliced transcript variants encoding multiple isoforms have been observed for this gene. [provided by RefSeq, Mar 2012]

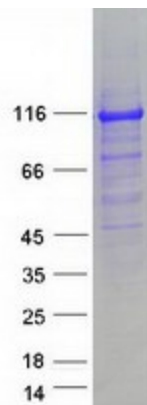
Product images:



Circular map for RC227866



Western blot validation of overexpression lysate (Cat# [LY428611]) using anti-DDK antibody (Cat# [TA50011-100]). Left: Cell lysates from untransfected HEK293T cells; Right: Cell lysates from HEK293T cells transfected with RC227866 using transfection reagent MegaTran 2.0 (Cat# [TT210002]).



Coomassie blue staining of purified NEDD4L protein (Cat# [TP327866]). The protein was produced from HEK293T cells transfected with NEDD4L cDNA clone (Cat# RC227866) using MegaTran 2.0 (Cat# [TT210002]).