

Product datasheet for **RC227862**

beta COP (COPB1) (NM_001144062) Human Tagged ORF Clone

Product data:

Product Type:	Expression Plasmids
Product Name:	beta COP (COPB1) (NM_001144062) Human Tagged ORF Clone
Tag:	Myc-DDK
Symbol:	beta COP
Synonyms:	BARMACS; COPB
Mammalian Cell Selection:	Neomycin
Vector:	pCMV6-Entry (PS100001)
E. coli Selection:	Kanamycin (25 ug/mL)



[View online »](#)

ORF Nucleotide
Sequence:

>RC227862 ORF sequence
Red=Cloning site Blue=ORF Green=Tags(s)

TTTTGTAATACGACTCACTATAGGGCGGCCGGAATTCGTCGACTGGATCCGGTACCGAGGAGATCTGCC
GCC**CGCATCGCC**

ATGACGGCGGCTGAGAACGTATGCTACACGTTAATTAACGTGCCAATGGATTGAGAACACCACATCTGAAA
TTAGCTTAAAAAATGATCTAGAAAAAGGAGATGTAAGTCAAAGACTGAAGCTTTGAAGAAAGTAATCAT
TATGATTCTGAATGGTGA AAAAATCTCTGGACTTCTGATGACCATCATTGTTTTGTGCTACCTCTTCAG
GATCACACTATCAAGAAATTA CTCTGGTATTTTGGGAAATGTTCTAAAACAACTCCAGATGGGAGAC
TTTTACATGAGATGATCCTTGTATGTATGCATACAGAAAGGATCTTCAACATCCTAATGAATTTATTTCG
AGGATCTACTCTCGTTTTCTTGGCAAATGAAAGAAGCAGAATTGCTAGAACCTTTAATGCCAGCTATT
CGTGATGTTTTGGAGCATCGACACAGCTATGTTAGAAGAAATGCTGTTTTGGCCATCTATACCATCTATA
GAAATTTTGAACATCTTATACCTGATGCTCCTGAACTGATACATGATTTTCTGGTGAATGAGAAGGATGC
AAGTTGCAAAAGGAATGCATTTATGATGCTAATTCATGCAGATCAGGATCGAGCTTTGGATTACTTAAGT
ACTTGCATTGATCAAGTTCAAACATTTGGAGACATTTCTGCAGCTGGTTATTGTTGAACTGATTTATAAGG
TCTGTCATGCTAATCCATCAGAAAGAGCTCGTTTTATTGCTGCATCTATAACTTATTACAGTCATCCAG
CCCTGCTGTA AAAATATGAAGCTGCTGGGACATTAGTGACACTCTCTAGTGACCAACTGCAATCAAGGCT
GCTGCTCAGTGTTACATTGATTTAATTATTAAGGAGAGCGACAACAATGTA AAACTCATAGTTTTGGATC
GCTTGATAGAATTAAGAGCATCCTGCTCATGAACGAGTACTACAGGATCTGGTTATGGATATCCTAAG
AGTATTGAGCACACCAGACTTAGAAGTACGAAAGAAAACCTCTGCAGTTAGCACTGGATCTGTCTCTTCT
AGAAATGTTGAAGAGCTGGTTATTGCTGAAAGGAAGTATAAAAACAATAATGTGTCTGAGCATG
AAGACTGACAAAATACAGACAACCTCTAGTGC GAACATTGCATTCCTGTTCTGTCCGATTTCCAGATAT
GGCTGCAAAATGTTATTCCTGTGTTAATGGAATTTCTCAGTGACAACAACGAAGCAGCAGCTGCTGATGTC
TTGGAGTTTGTTCGTGAAGCCATTCAGCGCTTTGATAACCTGAGAATGCTTATTGTTGAGAAGATGCTTG
AAGCTTTTCATGCTATTA AATCTGTCAAGATTTACCGAGGAGCATTATGGATCCTGGGAGAATACTGTAG
TACCAAGGAAGACATTCAGAGTGTGATGACTGAGATCCGCAGGTCCTTGGAGAGATCCCAATTGTAGAG
TCAGAAATAAAGAAAGAGCTGGTGAATTA AACCTGAAGAAGAAATAACTGTAGGGCCAGTTCAGAAAT
TGGTTACTGAAATGGGTACCTATGCAACTCAGAGTGCCCTTAGCAGTTCTAGACCCACCAAGAAAGAGGA
AGACAGACCTCCCTTGGAGGATTCCTTCTGGATGGAGATTTCTTTGTTGCTGCCTCCCTTGCCACAAC
CTGACCAAGATTGCATTGCGCTATGTAGCTTTGGTTTCAGGAGAAGAAAAGCAAAATTTCTTTGTTGCTG
AGGCTATGTTGCTCATGGCTACTATCCTGCATTTGGGAAAATCCTCTCTCCTAAGAAGCCAATTA CTGA
TGATGATGGATCGAATTTCCCTGTGCCTCAAGGCTTTGCTGTAATGTTACCTTTAATGAATGACATT
TTCAATAAGGAATGCAGACAGTCCCTTTCTCACATGTTATCTGCTAAACTAGAAGAAGAGAAATTA TCCC
AAAAGAAAGAACTGAAAAGAGGAATGTGACAGTACAGCCTGATGACCCCATTTCTTTCATGCAACTAAC
TGCTAAGAATGAAATGAACTGCAAGGAAGATCAGTTTCAGCTGAGTTTACTGGCAGCAATGGGTAACACA
CAGAGGAAAGAGGCAGCAGATCCCCTAGCATCTAAACTTAACAAGGTCACCCAATTGACAGGTTTCTCAG
ATCCTGTATATGCAGAAGCTTACGTTTATGTCAACCAATATGATATTGCTCCTGGATGACTTGTGTTGAA
CCAAACCAGTGATACTTTGCAGAATTCACATTAAGA ACTAGCTACACTAGGGGATCTGAAACTGTGGAA
AAGCCGTCCTTTGACTCTTGCTCCTCATGACTTCGCAAAATATAAAGCTAACGTCAAAGTAGCATCAA
CAGAAAATGGAATAATTTTTGGTAATATAGTTTATGATGCTCTGGAGCAGCAAGTGACAGAAATTTGTG
GGTTCTCAGTGATATTCACATCGACATCATGGACTATATCCAGCCTGCAACTTGCACTGATGCAGAAATC
CGTCAGATGTGGGCCGAATTTGAATGGGAAAACAAAGTGACAGTTAACACCAACATGGTTGATTTAAATG
ACTACTTACAGCACATATAAAGTCAACCAATATGAAATGCCTGACTCCAGAAAAGGCCCTTTCTGGTTA
CTGTGGCTTTATGGCAGCCAACCTTTATGCTCGTTCCATATTTGGTGAAGATGCACTTGCAAAATGTCAGC
ATTGAGAAGCCAATTCACAGGGACCAGATGCTGCTGTTACCGGCCATATAAGAATTCGTGCAAAGAGCC
AGGAATGGCCTTAAGTCTTGGAGATAAAATCAACTTGTACAGAAAGAAAAGTAGTATA

ACGCGTACGCGGCCGCTCGAGCAGAAACTCATCTCAGAAGAGGATCTGGCAGCAAATGATATCCTGGATT
ACAAGGATGACGACGATAAGGTTTAA

Protein Sequence: >RC227862 protein sequence
 Red=Cloning site Green=Tags(s)

MTAAENVCYTLINVPMDSEPPSEISLKNLDEKGDVKSKEALKKVIIMILNGEKLPGLLMTIIRFVLPLO
 DHTIKKLLLVFWEIVPKTTPDGRLLHEMILVCDAYRKDLQHPNEFIRGSTLRFLCKLKEAELLEPLMPAI
 RACLEHRHSYVRRNAVLAIYTIYRNFEHLIPDAPELIHDFLVNEKDASCKRNAFMMLIHADQDRALDYL
 TCIDQVQTFGDILQLVIVELIYKVCHANPSEARAFIRCIYNLLQSSSPAVKYEAAGTLVTLSSAPTAIKA
 AAQCYIDLIIKESDNNVKLIVLDRLIELKEHPAHERVLQDLVMDILRVLSTPDLEVRKKTQLALDLVSS
 RNVEELVIVLKKEVIKTNVSEHEDTDKYRQLLVRTLHSCSVRFPDMAANVIVLMEFLSDNNEAAAADV
 LEFVREAIQRFDNLRMLIVEKMLEVFHAIKSVKIYRGALWILGEYCSTKEDIQSVMTIIRSLGEIPIVE
 SEIKKEAGELKPEEEITVGPVQKLVTEMGTYATQSALSSSRPTKKEEDRPPLRGFLLDGDDFFVAASLATT
 LTKIALRYVALVQEKKKQNSFVAEAMLLMATILHLGKSSLPKKPIITDDDVDRIISLCLKVLECSPLMNDI
 FNKECRQSLSHMLSAKLEEEKLSQKKESEKRNVTVQDDPISFMQLTAKNEMNCKEDQFQLSLLAAMGNT
 QRKEAADPLASKLNKVTQLTGFSDPVYAEAYVHVNOYDVLVLDVLDVNVQTSDTLQNLCTLELATLGLKLV
 KPSPLTLAPHDFANIKANVKVASTENGIIFGNIVYDVSGAASDRNCVVLSDIHIDIMDYIQPATCTDAEF
 RQMWAEFEWENKVTVNTNMVDLNDYLQHILKSTNMKCLTPEKALSGYCGFMAANLYARSIFGEDALANVS
 IEKPIHQGPDAAVTGHIRIRAKSQGMALSLGDKINLSQKTSI

TRTRPLEQKLISEEDLAANDILDYKDDDDKV

Chromatograms: https://cdn.origene.com/chromatograms/mk6201_c10.zip

Restriction Sites: SgfI-MluI

Cloning Scheme:

Cloning sites used for ORF Shuttling:



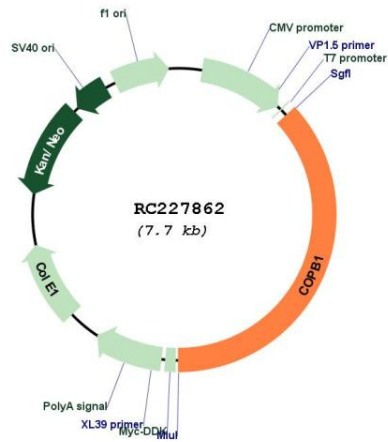
* The last codon before the Stop codon of the ORF

ACCN: NM_001144062

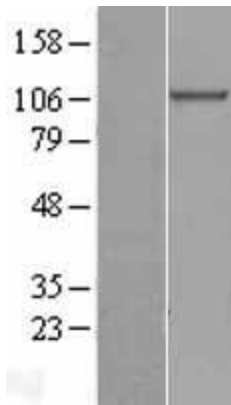
ORF Size: 2859 bp

OTI Disclaimer:	The molecular sequence of this clone aligns with the gene accession number as a point of reference only. However, individual transcript sequences of the same gene can differ through naturally occurring variations (e.g. polymorphisms), each with its own valid existence. This clone is substantially in agreement with the reference, but a complete review of all prevailing variants is recommended prior to use. More info
OTI Annotation:	This clone was engineered to express the complete ORF with an expression tag. Expression varies depending on the nature of the gene.
Components:	The ORF clone is ion-exchange column purified and shipped in a 2D barcoded Matrix tube containing 10ug of transfection-ready, dried plasmid DNA (reconstitute with 100 ul of water).
Reconstitution Method:	<ol style="list-style-type: none">1. Centrifuge at 5,000xg for 5min.2. Carefully open the tube and add 100ul of sterile water to dissolve the DNA.3. Close the tube and incubate for 10 minutes at room temperature.4. Briefly vortex the tube and then do a quick spin (less than 5000xg) to concentrate the liquid at the bottom.5. Store the suspended plasmid at -20°C. The DNA is stable for at least one year from date of shipping when stored at -20°C.
RefSeq:	NM_001144062.1 , NP_001137534.1
RefSeq Size:	3368 bp
RefSeq ORF:	2862 bp
Locus ID:	1315
UniProt ID:	P53618
Cytogenetics:	11p15.2
MW:	107.1 kDa
Gene Summary:	This gene encodes a protein subunit of the coatamer complex associated with non-clathrin coated vesicles. The coatamer complex, also known as the coat protein complex 1, forms in the cytoplasm and is recruited to the Golgi by activated guanosine triphosphatases. Once at the Golgi membrane, the coatamer complex may assist in the movement of protein and lipid components back to the endoplasmic reticulum. Alternatively spliced transcript variants have been described. [provided by RefSeq, Jan 2009]

Product images:



Circular map for RC227862



Western blot validation of overexpression lysate (Cat# [LY428489]) using anti-DDK antibody (Cat# [TA50011-100]). Left: Cell lysates from untransfected HEK293T cells; Right: Cell lysates from HEK293T cells transfected with RC227862 using transfection reagent MegaTran 2.0 (Cat# [TT210002]).