

Product datasheet for RC227860

GPR63 (NM_001143957) Human Tagged ORF Clone

Product data:

Product Type:	Expression Plasmids
Product Name:	GPR63 (NM_001143957) Human Tagged ORF Clone
Tag:	Myc-DDK
Symbol:	GPR63
Synonyms:	PSP24(beta); PSP24B
Mammalian Cell Selection:	Neomycin
Vector:	pCMV6-Entry (PS100001)
E. coli Selection:	Kanamycin (25 ug/mL)
ORF Nucleotide Sequence:	>RC227860 ORF sequence Red=Cloning site Blue=ORF Green=Tags(s)

TTTTGTAATACGACTCACTATAGGGCGGCCGGAATTCGTCGACTGGATCCGGTACCGAGGAGATCTGCC
GCC**CGATCGCC**

ATGGTCTTCTCGGCAGTGTGACTGCGTCCATACCGGGACATCCAACACAACATTTGTCGTGTATGAAA
ACACCTACATGAATATTACACTCCCTCCACCATTCCAGCATCCTGACCTCAGTCCATTGCTTAGATATAG
TTTTGAAACCATGGCTCCACTGGTTTGAGTTCCTTGACCGTGAATAGTACAGCTGTGCCACAACACCA
GCAGCATTAAGAGCCTAACTTGCTCTTCAGATCACCTTTCTGCTATAATGATATTCATTCTGTTTG
TGCTTTTTCTGGGAACCTGGTTGTTGCTCATGGTTTACCAAAAAGCTGCCATGAGGTCTGCAATTAA
CATCCTCCTTGCCAGCCTAGCTTTTGCAGACATGTTGCTTGCAAGTGTGAACATGCCCTTTGCCCTGGTA
ACTATTCTTACTACCCGATGGATTTTTGGGAAATCTTCTGTAGGGTATCTGCTATGTTTTCTGTTTAT
TTGTGATAGAAGGAGTAGCCATCCTGCTCATCATTAGCATAGATAGGTTCCCTTATATAGTCCAGAGGCA
GGATAAGCTAAACCCATATAGAGCTAGGGTTCTGATTGCAGTTTCTTGGGCAACTTCCTTTTGTGTAGCT
TTTCTTTAGCCGTAGGAAACCCGACCTGCAGATACCTCCCGAGCTCCCAGTGTGTGTTGGGTACA
CAACCAATCCAGGCTACCAGGCTTATGTGATTTGATTTCTCTCATTTCTTCTCATACCTTCTGTT
AATACTGTACTCATTATGGGCATACTCAACACCCTTCGGCACAATGCCTTGAGGATCCATAGTACCCT
GAAGGTATATGCCTCAGCCAGGCCAGCAAACCTGGGTCTCATGAGTCTGCAGAGACCTTCCAGATGAGCA
TTGACATGGGCTTTAAAACACGTGCCTTACCACCTATTTGATTCTTTGCTGTCTTTCATTGTCTGCTG
GGCCCCATTACCACTTACAGCCTTGTGGCAACATTAGTAAGCACTTTTACTATCAGCACAACCTTTTTT
GAGATTAGCACCTGGCTACTGTGGCTCTGCTACCTCAAGTCTGCATTGAATCCGCTGATCTACTACTGGA
GGATTAAGAAATTCATGATGCTTGCCTGGACATGATGCCTAAGTCTTCAAGTTTTTGGCCGAGCTCCC
TGGTCACACAAAGCGACGGATACGTCCTAGTGTCTATGTGTGTTGGGAACATCGGACGGTGGTG

ACGCGTACGCGGCCGCTCGAGCAGAAACTCATCTCAGAAGAGGATCTGGCAGCAAATGATATCCTGGATT
ACAAGGATGACGACGATAAGGTTTAA



[View online »](#)

Protein Sequence: >RC227860 protein sequence
Red=Cloning site Green=Tags(s)

MVFSAVLTAFHTGTSNTTFVYENTYMNITLPPPFQHPDLSPLLRYSFETMAPTGLSSSLTVNSTAVPTTP
 AAFKSLNPLQITLSAIMIFILFVSFLGNLVVCLMYYQKAAMRSAINILLASLAFADMLLAVLNMPFALV
 TILTTRWIFGKFFCRVSAMFFWLFVIEGVAILLIISIDRFLIIVQRQDKLNPYRARVLIASWATSFCVA
 FPLAVGNPDLQIPSRAPQCVFGYTTNPGYQAYVILISLISFFIPFLVILYSFMGILNLRHNLRIHSYP
 EGICLSQASKLGLMSLQRPFQMSIDMGFKTRAFITLILFAVIVCWAPFTTYSLVATFSKHFFYQHNF
 EISTWLLWLCYLKLSALNPLIYYWRIKKFHDACLDMMPKSFKFLPQLPGHTKRRIRPSAVYVCGEHRTVV

TRTRPLEQKLISEEDLAANDILDYKDDDDKV

Chromatograms: https://cdn.origene.com/chromatograms/mk6087_f05.zip

Restriction Sites: SgfI-MluI

Cloning Scheme:



* The last codon before the Stop codon of the ORF

ACCN: NM_001143957

ORF Size: 1257 bp

OTI Disclaimer: The molecular sequence of this clone aligns with the gene accession number as a point of reference only. However, individual transcript sequences of the same gene can differ through naturally occurring variations (e.g. polymorphisms), each with its own valid existence. This clone is substantially in agreement with the reference, but a complete review of all prevailing variants is recommended prior to use. [More info](#)

OTI Annotation: This clone was engineered to express the complete ORF with an expression tag. Expression varies depending on the nature of the gene.

Components: The ORF clone is ion-exchange column purified and shipped in a 2D barcoded Matrix tube containing 10ug of transfection-ready, dried plasmid DNA (reconstitute with 100 ul of water).

Reconstitution Method:

1. Centrifuge at 5,000xg for 5min.
2. Carefully open the tube and add 100ul of sterile water to dissolve the DNA.
3. Close the tube and incubate for 10 minutes at room temperature.
4. Briefly vortex the tube and then do a quick spin (less than 5000xg) to concentrate the liquid at the bottom.
5. Store the suspended plasmid at -20°C. The DNA is stable for at least one year from date of shipping when stored at -20°C.

RefSeq: [NM_001143957.3](#)

RefSeq Size: 6088 bp

RefSeq ORF: 1260 bp

Locus ID: 81491

UniProt ID: [Q9BZJ6](#)

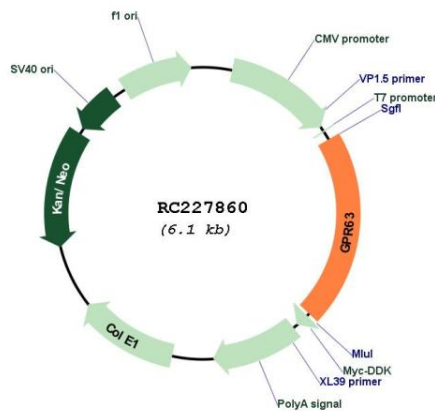
Cytogenetics: 6q16.1

Protein Families: Druggable Genome, GPCR, Transmembrane

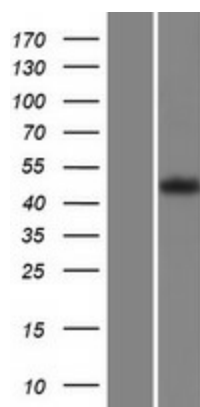
MW: 47.6 kDa

Gene Summary: This gene encodes a G protein-coupled receptor. Multiple alternatively spliced variants, encoding the same protein, have been identified. [provided by RefSeq, Dec 2011]

Product images:



Circular map for RC227860



Western blot validation of overexpression lysate (Cat# [LY428421]) using anti-DDK antibody (Cat# [TA50011-100]). Left: Cell lysates from untransfected HEK293T cells; Right: Cell lysates from HEK293T cells transfected with RC227860 using transfection reagent MegaTran 2.0 (Cat# [TT210002]).