

Product datasheet for **RC227857**

NFYC (NM_001142587) Human Tagged ORF Clone

Product data:

Product Type:	Expression Plasmids
Product Name:	NFYC (NM_001142587) Human Tagged ORF Clone
Tag:	Myc-DDK
Symbol:	NFYC
Synonyms:	CBF-C; CBFC; H1TF2A; HAP5; HSM; NF-YC
Mammalian Cell Selection:	Neomycin
Vector:	pCMV6-Entry (PS100001)
E. coli Selection:	Kanamycin (25 ug/mL)
ORF Nucleotide Sequence:	>RC227857 representing NM_001142587 Red=Cloning site Blue=ORF Green=Tags(s)

TTTTGTAATACGACTCACTATAGGGCGGCCGGAATTCGTCGACTGGATCCGGTACCGAGGAGATCTGCC
GCC**CGATCGCC**

ATGTCCACAGAAGGAGGATTTGGTGGTACTAGCAGCAGTGATGCCAGCAAAGCCTACAGTCGTTCTGGC
CTCGGGTCATGGAAGAAATCCGGAATTTAACAGTGAAAGACTTCCGAGTGCAGGAACTCCCACTGGCTCG
TATTAAGAAGATTATGAAACTGGATGAAGATGTGAAGATGATCAGTGCAGAAGCGCCTGTACTCTTTGCC
AAGGCAGCCAGATTTTTATCACAGAGTTGACTCTTCGAGCCTGGATTACACAGAAGATAACAAGCGCC
GGACTCTACAGAGAAATGATATCGCCATGGCAATTACAAAATTTGATCAGTTTGATTTTCTCATCGATAT
TGTTCCAAGAGATGAACTGAAACCTCAAAGCGTCAGGAGGAGGTGCGCCAGTCTGTAACCTCTGCCGAG
CCAGTCCAGTACTATTTACGCTGGCTCAGCAACCCACCCTGTCCAAGTCCAGGGCCAGCAGCAAGGCC
AGCAGACCACCAGCTCCACGACCACCATCCAGCCTGGGCAGATCATCATCGCACAGCCTCAGCAGGGCCA
GACCACACCTGTGACAAATGCAGGTTGGAGAAGGTGAGCAGGTGCAGATTGTCCAGGCTCAGCCACAGGGT
CAAGCCCAACAGGCCAGAGTGGCACTGGACAGACCATGCAGGTGATGCAGCAGATCATCACTAACACAG
GAGAGATCCAGCAGATCCCGTGCAGCTGAATGCCGGCCAGTGCAGTATATCCGCTTAGCCAGCCTGT
ATCAGGCACTCAAGTTGTGCAGGGACAGATCCAGACACTTCCACCAATGCTCAACAGATTACACAGACA
GAGGTCCAGCAAGGACAGCAGCAGTTTCAGCCAGTTCACAGATGGACAGCAGCTCTACCAGATCCAGCAAG
TCACCATGCCTGCGGGCCAGGACCTCGCCAGCCATGTTTCATCCAGTCCAGCAACCAGCCCTCCGACGG
GCAGGCCCCAGGTGACCGCGAC

ACGCGTACGCGGCCGCTCGAGCAGAACTCATCTCAGAAGAGGATCTGGCAGCAAATGATATCCTGGATT
ACAAGGATGACGACGATAAGGTTTAA



[View online »](#)

Protein Sequence: >RC227857 representing NM_001142587
Red=Cloning site Green=Tags(s)

MSTEGGFGGTSSSDAQQSLQSFWRVMEIERNLTVKDFRVQELPLARIKKIMKLEDEVKMISAEAPVLF
 KAAQIFITELTLRAWIHTEDEKRRRLQRNDIAMAITKFDQDFLDIVPRDELKPPKRQEEVRSVTPAE
 PVQYYFTLAQQPTAVQVQGGQQGQTTSSSTTTIQPGQIIIAQPQQGQTPVTMQVGEQQVQIVQAQPG
 QAQQAQSGTGQTMQVMQIITNTGEIQQIPVQLNAGQLQYIRLAQPVSGTQVVGQIQTLATNAQQITQT
 EVQGGQQFSQFTDGQLYQIQVTPAGQDLAQPMFIQSANQPSDQAPQVTGD

TRTRPLEQKLISEEDLAANDILDYKDDDDKV

Chromatograms: https://cdn.origene.com/chromatograms/ja1484_a09.zip

Restriction Sites: SgfI-MluI

Cloning Scheme:

Cloning sites used for ORF Shuttling:



* The last codon before the Stop codon of the ORF

ACCN: NM_001142587

ORF Size: 1005 bp

OTI Disclaimer: The molecular sequence of this clone aligns with the gene accession number as a point of reference only. However, individual transcript sequences of the same gene can differ through naturally occurring variations (e.g. polymorphisms), each with its own valid existence. This clone is substantially in agreement with the reference, but a complete review of all prevailing variants is recommended prior to use. [More info](#)

OTI Annotation: This clone was engineered to express the complete ORF with an expression tag. Expression varies depending on the nature of the gene.

Components: The ORF clone is ion-exchange column purified and shipped in a 2D barcoded Matrix tube containing 10ug of transfection-ready, dried plasmid DNA (reconstitute with 100 ul of water).

Reconstitution Method:

1. Centrifuge at 5,000xg for 5min.
2. Carefully open the tube and add 100ul of sterile water to dissolve the DNA.
3. Close the tube and incubate for 10 minutes at room temperature.
4. Briefly vortex the tube and then do a quick spin (less than 5000xg) to concentrate the liquid at the bottom.
5. Store the suspended plasmid at -20°C. The DNA is stable for at least one year from date of shipping when stored at -20°C.

RefSeq: [NM_001142587.1](#), [NP_001136059.1](#)

RefSeq ORF: 1005 bp

Locus ID: 4802

UniProt ID: [Q13952](#)

Cytogenetics: 1p34.2

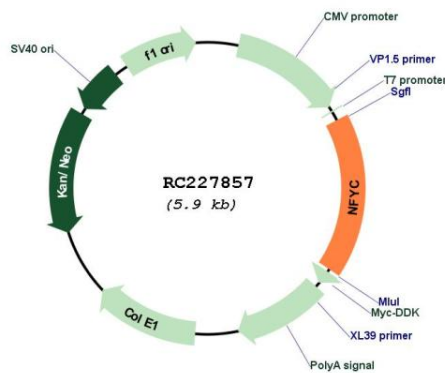
Protein Families: Transcription Factors

Protein Pathways: Antigen processing and presentation

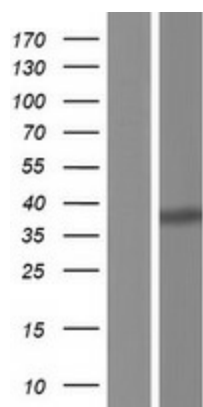
MW: 36.9 kDa

Gene Summary: This gene encodes one subunit of a trimeric complex forming a highly conserved transcription factor that binds with high specificity to CCAAT motifs in the promoters of a variety of genes. The encoded protein, subunit C, forms a tight dimer with the B subunit, a prerequisite for subunit A association. The resulting trimer binds to DNA with high specificity and affinity. Subunits B and C each contain a histone-like motif. Multiple transcript variants encoding different isoforms have been found for this gene. [provided by RefSeq, Dec 2008]

Product images:



Circular map for RC227857



Western blot validation of overexpression lysate (Cat# [LY428190]) using anti-DDK antibody (Cat# [TA50011-100]). Left: Cell lysates from untransfected HEK293T cells; Right: Cell lysates from HEK293T cells transfected with RC227857 using transfection reagent MegaTran 2.0 (Cat# [TT210002]).