

## Product datasheet for **RC227856**

### beta COP (COPB1) (NM\_001144061) Human Tagged ORF Clone

#### Product data:

Product Type:	Expression Plasmids
Product Name:	beta COP (COPB1) (NM_001144061) Human Tagged ORF Clone
Tag:	Myc-DDK
Symbol:	beta COP
Synonyms:	BARMACS; COPB
Mammalian Cell Selection:	Neomycin
Vector:	pCMV6-Entry (PS100001)
E. coli Selection:	Kanamycin (25 ug/mL)



[View online »](#)

ORF Nucleotide  
Sequence:

>RC227856 ORF sequence  
Red=Cloning site Blue=ORF Green=Tags(s)

TTTTGTAATACGACTCACTATAGGGCGGCCGGGAATTCGTCGACTGGATCCGGTACCGAGGAGATCTGCC  
GCC**CGCATCGCC**

ATGACGGCGGCTGAGAACGTATGCTACACGTTAATTAACGTGCCAATGGATTGAGAACACCACATCTGAAA  
TTAGCTTAAAAAATGATCTAGAAAAAGGAGATGTAAGTCAAAGACTGAAGCTTTGAAGAAAGTAATCAT  
TATGATTCTGAATGGTGA AAAAATCTCTGGACTTCTGATGACCATCATTGTTTTGTGCTACCTCTTCAG  
GATCACACTATCAAGAAATTA CTCTGGTATTTTGGGAAATGTTCTAAAACAACTCCAGATGGGAGAC  
TTTTACATGAGATGATCCTTGTATGTGATGCATACAGAAAGGATCTTCAACATCCTAATGAATTTATTTCG  
AGGATCTACTCTCGTTTTCTTGGCAAATGAAAGAAGCAGAATTGCTAGAACCTTTAATGCCAGCTATT  
CGTGATGTTTTGGAGCATCGACACAGCTATGTTAGAAGAAATGCTGTTTTGGCCATCTATACCATCTATA  
GAAATTTTGAACATCTTATACCTGATGCTCCTGAACTGATACATGATTTTCTGGTGAATGAGAAGGATGC  
AAGTTGCAAAAGGAATGCATTTATGATGCTAATTCATGCAGATCAGGATCGAGCTTTGGATTACTTAAGT  
ACTTGCATTGATCAAGTTCAAACATTTGGAGACATTTCTGCAGCTGGTTATTGTTGAACTGATTTATAAGG  
TCTGTCATGCTAATCCATCAGAAAGAGCTCGTTTTATTGCTGCATCTATAACTTATTACAGTCATCCAG  
CCCTGCTGTA AAAATATGAAGCTGCTGGGACATTAGTGACACTCTCTAGTGACCAACTGCAATCAAGGCT  
GCTGCTCAGTGTTACATTGATTTAATTATTAAGGAGAGCGACAACAATGTA AAACTCATAGTTTTGGATC  
GCTTGATAGAATTAAGAGCATCCTGCTCATGAACGAGTACTACAGGATCTGGTTATGGATATCCTAAG  
AGTATTGAGCACACCAGACTTAGAAGTACGAAAGAAAACCTGCGAGTTAGCACTGGATCTTGTCTCTTCT  
AGAAATGTTGAAGAGCTGGTTATTGCTGGAAGAAGGAAGTATAAAAACAATAATGTGTCTGAGCATG  
AAGACTGACAAAATACAGACAACCTCTAGTCCGAACATTGCATTCCTGTTCTGTCCGATTTCCAGATAT  
GGCTGCAAAATGTTATTCCTGTGTTAATGGAATTTCTCAGTGACAACAACGAAGCAGCAGCTGCTGATGTC  
TTGGAGTTTGTTCGTGAAGCCATTCAGCGCTTTGATAACCTGAGAATGCTTATTGTTGAGAAGATGCTTG  
AAGCTTTTCATGCTATTA AATCTGTCAAGATTTACCGAGGAGCATTATGGATCCTGGGAGAATACTGTAG  
TACCAAGGAAGACATTCAGAGTGTGATGACTGAGATCCGCAGGTCCTTGGAGAGATCCCAATTGTAGAG  
TCAGAAAATAAGAAAGAGCTGGTGAATTA AACCTGAAGAAGAAATAACTGTAGGGCCAGTTCCAGAAAT  
TGGTTACTGAAATGGGTACCTATGCAACTCAGAGTGCCCTTAGCAGTTCTAGACCCACCAAGAAAGAGGA  
AGACAGACCTCCCTTGGAGGATTCCTTCTGGATGGAGATTTCTTTGTTGCTGCCTCCCTTGCCACAAC  
CTGACCAAGATTGCATTGCGCTATGTAGCTTTGGTTCCAGGAGAAGAAAAGCAAAATTTCTTTGTTGCTG  
AGGCTATGTTGCTCATGGCTACTATCCTGCATTTGGGAAAATCCTCTCTCCTAAGAAGCCAATTA CTGA  
TGATGATGGATCGAATTTCCCTGTGCCTCAAGGCTTGTCTGAATGTTACCTTTAATGAATGACATT  
TTCAATAAGGAATGCAGACAGTCCCTTTCTCACATGTTATCTGCTAAACTAGAAGAAGAGAAATTA CCC  
AAAAGAAAGAACTGAAAAGAGGAATGTGACAGTACAGCCTGATGACCCCATTTCTTTCATGCAACTAAC  
TGCTAAGAATGAAATGAACTGCAAGGAAGATCAGTTTCAGCTGAGTTTACTGGCAGCAATGGGTAACACA  
CAGAGGAAAGAGGCAGCAGATCCCCTAGCATCTAAACTTAACAAGGTCACCCAATTGACAGGTTTCTCAG  
ATCCTGTATATGCAGAAGCTTACGTTTCATGTCAACCAATATGATATTGCTCCTGGATGACTTGTGTTGAA  
CCAAACCAGTGATACTTTGCAGAATTCACATTAAGA ACTAGCTACACTAGGGGATCTGAAACTGTGGAA  
AAGCCGTCTCCTTTGACTCTTGCTCCTCATGACTTCGCAAAATATAAGCTAACGTCAAAGTAGCATCAA  
CAGAAAATGGAATAATTTTTGGTAATATAGTTTATGATGTCTCTGGAGCAGCAAGTGACAGAAAATGTGT  
GGTTCTCAGTGATATTCACATCGACATCATGGACTATATCCAGCCTGCAACTTGCACTGATGCAGAAATC  
CGTCAGATGTGGGCCGAATTTGAATGGGAAAACAAAGTGACAGTTAACACCAACATGGTTGATTTAAATG  
ACTACTTACAGCACATATAAAGTCAACCAATATGAAATGCTGACTCCAGAAAAGGCCCTTTCTGGTTA  
CTGTGGCTTTATGGCAGCCAACCTTTATGCTCGTTCATATTTGGTGAAGATGCACTTGCAAAATGCAGC  
ATTGAGAAGCCAATTCACAGGGACCAGATGCTGCTGTTACCGGCCATATAAGAATTCGTGCAAAGAGCC  
AGGAATGGCCTTAAGTCTTGAGATAAAATCAACTTGTACAGAAAGAAAAGTAGTATA

**ACGCGT**ACGCGGCCGCTCGAGCAGAAACTCATCTCAGAAGAGGATCTGGCAGCAAATGATATCCTGGATT  
ACAAGGATGACGACGATAAGGTTTAA

Protein Sequence: >RC227856 protein sequence  
 Red=Cloning site Green=Tags(s)

MTAAENVCYTLINVPMDSEPPSEISLKNDEKGDVKSKEALKKVIIMILNGEKLPGLLMTIIRFVLPLO  
 DHTIKKLLLVFWEIVPKTTPDGRLLHEMILVCDAYRKDLQHPNEFIRGSTLRFLCKLKEAELLEPLMPAI  
 RACLEHRHSYVRRNAVLAIYTIYRNFEHLIPDAPELIHDFLVNEKDASCKRNAFMMLIHADQDRALDYL  
 TCIDQVQTFGDILQLVIVELIYKVCANPSEARAFIRCIYNLLQSSPAVKYEAAGTLVTLSSAPTAIKA  
 AAQCYIDLIIKESDNNVKLIVLDRLIELKEHPAHERVLQDLVMDILRVLSTPDLEVRKKTQLALDLVSS  
 RNVEELVIVLKKEVIKTNVSEHEDTDKYRQLLVRTLHSCSVRFPDMAANVIPVLMFLSDNNEAAAADV  
 LEFVREAIQRFDNLRMLIVEKMLEVFHAIKSVKIYRGALWILGEYCSTKEDIQSVMTIIRSLGEIPIVE  
 SEIKKEAGELKPEEEITVGPVQKLVTEMGTYATQSALSSSRPTKKEEDRPPLRGFLLDGDDFFVAASLATT  
 LTKIALRYVALVQEKKKQNSFVAEAMLLMATILHLGKSSLPKKPIITDDDVDRI SLCLKVLSPLMNDI  
 FNKECRQSLSHMLSAKLEEEKLSQKKESEKRNVTVQDDPISFMQLTAKNEMNCKEDQFQLSLLAAMGNT  
 QRKEAADPLASKLNKVTQLTGFSDPVYAEAYVHVNOYDVLVLDVLDVNVQTSDTLQNLCTLELATLGLKLV  
 KPSPLTLAPHDFANIKANVKVASTENGIIFGNIVYDVSGAASDRNCVVLSDIHIDIMDYIQPATCTDAEF  
 RQMWAEFEWENKVTVNTNMVDLNDYLQHLKSTNMKCLTPEKALSGYCGFMAANLYARSIFGEDALANVS  
 IEKPIHQGPDAAVTGHIRIRAKSQGMALSLGDKINLSQKTSI

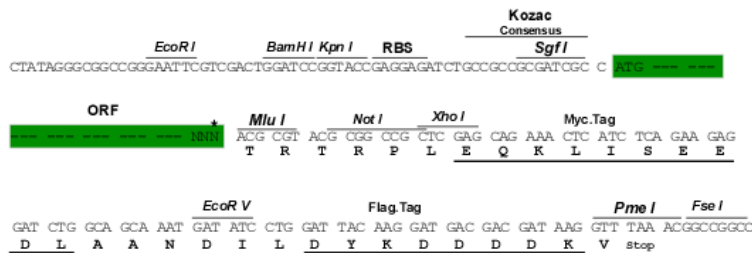
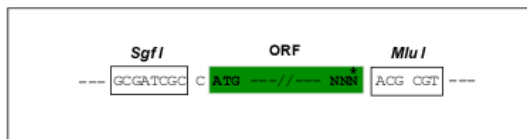
TRTRPLEQKLISEEDLAANDILDYKDDDDKV

Chromatograms: [https://cdn.origene.com/chromatograms/mk6201\\_c10.zip](https://cdn.origene.com/chromatograms/mk6201_c10.zip)

Restriction Sites: SgfI-MluI

Cloning Scheme:

Cloning sites used for ORF Shuttling:



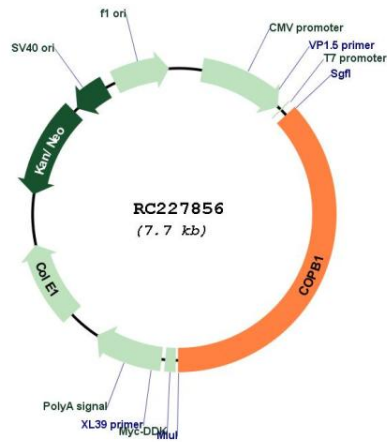
\* The last codon before the Stop codon of the ORF

ACCN: NM\_001144061

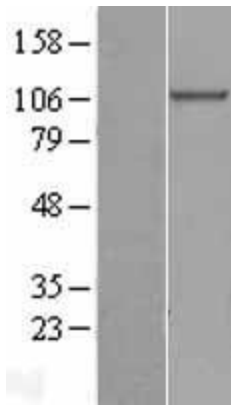
ORF Size: 2859 bp

<b>OTI Disclaimer:</b>	The molecular sequence of this clone aligns with the gene accession number as a point of reference only. However, individual transcript sequences of the same gene can differ through naturally occurring variations (e.g. polymorphisms), each with its own valid existence. This clone is substantially in agreement with the reference, but a complete review of all prevailing variants is recommended prior to use. <a href="#">More info</a>
<b>OTI Annotation:</b>	This clone was engineered to express the complete ORF with an expression tag. Expression varies depending on the nature of the gene.
<b>Components:</b>	The ORF clone is ion-exchange column purified and shipped in a 2D barcoded Matrix tube containing 10ug of transfection-ready, dried plasmid DNA (reconstitute with 100 ul of water).
<b>Reconstitution Method:</b>	<ol style="list-style-type: none"><li>1. Centrifuge at 5,000xg for 5min.</li><li>2. Carefully open the tube and add 100ul of sterile water to dissolve the DNA.</li><li>3. Close the tube and incubate for 10 minutes at room temperature.</li><li>4. Briefly vortex the tube and then do a quick spin (less than 5000xg) to concentrate the liquid at the bottom.</li><li>5. Store the suspended plasmid at -20°C. The DNA is stable for at least one year from date of shipping when stored at -20°C.</li></ol>
<b>RefSeq:</b>	<a href="#">NM_001144061.2</a>
<b>RefSeq Size:</b>	3429 bp
<b>RefSeq ORF:</b>	2862 bp
<b>Locus ID:</b>	1315
<b>UniProt ID:</b>	<a href="#">P53618</a>
<b>Cytogenetics:</b>	11p15.2
<b>MW:</b>	107.1 kDa
<b>Gene Summary:</b>	This gene encodes a protein subunit of the coatomer complex associated with non-clathrin coated vesicles. The coatomer complex, also known as the coat protein complex 1, forms in the cytoplasm and is recruited to the Golgi by activated guanosine triphosphatases. Once at the Golgi membrane, the coatomer complex may assist in the movement of protein and lipid components back to the endoplasmic reticulum. Alternatively spliced transcript variants have been described. [provided by RefSeq, Jan 2009]

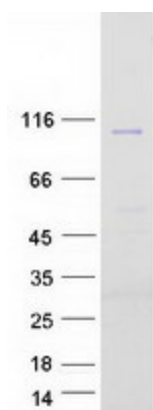
Product images:



Circular map for RC227856



Western blot validation of overexpression lysate (Cat# [LY428489]) using anti-DDK antibody (Cat# [TA50011-100]). Left: Cell lysates from untransfected HEK293T cells; Right: Cell lysates from HEK293T cells transfected with [RC227862] using transfection reagent MegaTran 2.0 (Cat# [TT210002]).



Coomassie blue staining of purified COPB1 protein (Cat# [TP327856]). The protein was produced from HEK293T cells transfected with COPB1 cDNA clone (Cat# RC227856) using MegaTran 2.0 (Cat# [TT210002]).