

Product datasheet for **RC227851**

ARL5C (NM_001143968) Human Tagged ORF Clone

Product data:

Product Type: Expression Plasmids
Product Name: ARL5C (NM_001143968) Human Tagged ORF Clone
Tag: Myc-DDK
Symbol: ARL5C
Synonyms: ARL12
Mammalian Cell Selection: Neomycin
Vector: pCMV6-Entry (PS100001)
E. coli Selection: Kanamycin (25 ug/mL)
ORF Nucleotide Sequence: >RC227851 representing NM_001143968
Red=Cloning site Blue=ORF Green=Tags(s)

TTTTGTAATACGACTCACTATAGGGCGGCCGGAATTCGTCGACTGGATCCGGTACCGAGGAGATCTGCC
GCC**CGATCGCC**

ATGGGACAGCTGATCGCCAAGTTAATGAGCATCTTCGGGAACCAGGAGCACACGGTCATCATCGTGGGAC
TGGACAATGAAGGAAAGACCACCATTCTCTACCGTTCTTGACCAATGAGGTGGTCCATATGTGTCCCAC
CATTGGCAGCAACGTGGAGGAGATCATTCTGCCGAAGACCCACTTCTTCATGTGGGACATAGTGAGACCT
GAGGCTCTGAGCTTTATCTGGAACACATACTACTCCAACACTGAGTTTATCATCCTGTGATTGACAGCA
CGGACCGGATCGGCTGCTGACCACTCGGGAGGAGCTATATAAAATGCTGGCCCATGAGGCTCTACAGGA
TGCTTCAGTCCTGATATTGCCAATAAGCAGGACGTGAAGGACTCCATGAGGATGGTGGAGATCTCCCAT
TTCTTACTCTCAGCACCATCAAAGACCACTCGTGGCATATACAAGGCTGCTGTGCCCTACCAGGGAAG
GGCTGCCTGCCAGACTTCAGTGGATGGAATCTCAGGCCGCTGCTAAC

ACGCGTACGCGGCCGCTCGAGCAGAACTCATCTCAGAAGAGGATCTGGCAGCAAATGATATCCTGGATT
ACAAGGATGACGACGATAAGGTTTAA

Protein Sequence: >RC227851 representing NM_001143968
Red=Cloning site Green=Tags(s)

MGQLIAKLMSIFGNQEHTVIVGLDNEGKTTILYRFLTNEVVHMCPTIGSNVEEIIILPKTHFFMWDIVRP
EALSFIIWNTYYSNTEFIIILVIDSTDRDLLTTREELYKMLAHEALQDASVLIIFANKQDVKDSMRMVEISH
FLTLSTIKDHSWHIQGCCALTREGLPARLQWMESQAAAN

TRTRPLEQKLISEEDLAANDILDYKDDDDKV

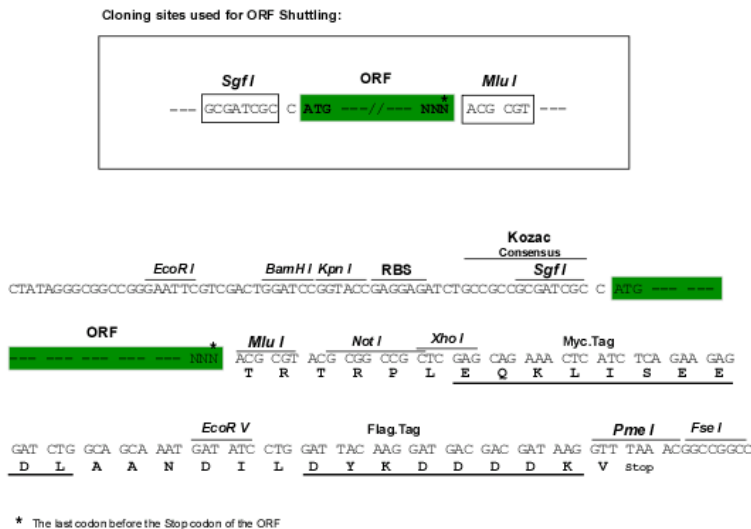
Chromatograms: https://cdn.origene.com/chromatograms/mk8037_c11.zip



[View online »](#)

Restriction Sites: SgfI-MluI

Cloning Scheme:



ACCN: NM_001143968

ORF Size: 537 bp

OTI Disclaimer: The molecular sequence of this clone aligns with the gene accession number as a point of reference only. However, individual transcript sequences of the same gene can differ through naturally occurring variations (e.g. polymorphisms), each with its own valid existence. This clone is substantially in agreement with the reference, but a complete review of all prevailing variants is recommended prior to use. [More info](#)

OTI Annotation: This clone was engineered to express the complete ORF with an expression tag. Expression varies depending on the nature of the gene.

Components: The ORF clone is ion-exchange column purified and shipped in a 2D barcoded Matrix tube containing 10ug of transfection-ready, dried plasmid DNA (reconstitute with 100 ul of water).

Reconstitution Method:

1. Centrifuge at 5,000xg for 5min.
2. Carefully open the tube and add 100ul of sterile water to dissolve the DNA.
3. Close the tube and incubate for 10 minutes at room temperature.
4. Briefly vortex the tube and then do a quick spin (less than 5000xg) to concentrate the liquid at the bottom.
5. Store the suspended plasmid at -20°C. The DNA is stable for at least one year from date of shipping when stored at -20°C.

RefSeq: [NM_001143968.1](#), [NP_001137440.1](#)

RefSeq ORF: 540 bp

Locus ID: 390790

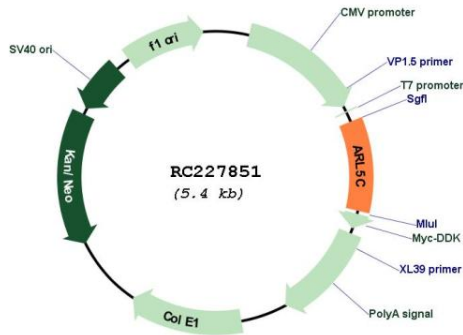
UniProt ID: [A6NH57](#)

Cytogenetics: 17q12

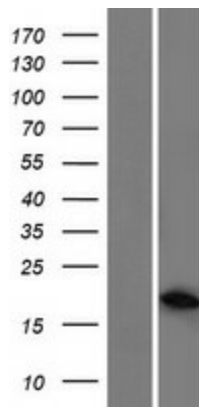
MW: 20.4 kDa

Gene Summary: Binds and exchanges GTP and GDP.[UniProtKB/Swiss-Prot Function]

Product images:



Circular map for RC227851



Western blot validation of overexpression lysate (Cat# [LY428431]) using anti-DDK antibody (Cat# [TA50011-100]). Left: Cell lysates from untransfected HEK293T cells; Right: Cell lysates from HEK293T cells transfected with RC227851 using transfection reagent MegaTran 2.0 (Cat# [TT210002]).