

## Product datasheet for RC227843

### GATSL1 (NM\_001145063) Human Tagged ORF Clone

#### Product data:

Product Type:	Expression Plasmids
Product Name:	GATSL1 (NM_001145063) Human Tagged ORF Clone
Tag:	Myc-DDK
Symbol:	GATSL1
Synonyms:	GATS-like protein 1
Mammalian Cell Selection:	Neomycin
Vector:	pCMV6-Entry (PS100001)
E. coli Selection:	Kanamycin (25 ug/mL)
ORF Nucleotide Sequence:	>RC227843 representing NM_001145063 Red=Cloning site Blue=ORF Green=Tags(s)

TTTTGTAATACGACTCACTATAGGGCGGCCGGAATTCGTCGACTGGATCCGGTACCGAGGAGATCTGCC  
GCC**CGATCGCC**

ATGGAACCCACATCCTGGAGCACCGGCTGCAAGTTGCCAGCGTCGCCAACGAGAGTATACCGCTGTTCA  
CCTACGGCCTGATCAAACCTTGCCTTCTGTCTCCAAGACCAGGTGCAAGTTCTTCAGTCTGACTGAGAC  
GCCAGAGGATTAACTATCATTGTCGATGAGGAAGGATTCCTAGAGCTGCCCTCTCGGAGCACCTGAGT  
GTGGCAGATGCCACCTGGCTGGCCCTGAACGTGGTGTCCGGCGGTGCCAGCTTCTCCAGCTCCCAGCCCA  
TCGGCGTGACCAAGATCGCCAAGTCAGTCATCGCCCCACTGGCTGACCAGAACATATCCGTGTTTCATGCT  
GTCCACGTATCAGACAGACTTCATCCTGGTGCGGAGCGGGACCTGCCCTTTGTCACCCACACATTGTCA  
TCAGAGTTCACCATCCTGCGGGTCGTAATGGCGAGACCGTGGCAGCCGAGAACCCTCGGCATCACCAATG  
GCTTCGTGAAGCCCAAGCTGGTCCAGAGGCCAGTCATCCACCCACTGTCCAGCCCGAGCAACAGGTTCTG  
TGTACCAGCCTGGACCCCTGACACGCTGCCTGCTGTTGCCACACTCCTCATGGATGTGATGTTCTACTCC  
AATGGAGTGAAGGACCCATGGCCACTGGGGATGACTGCGGCCACATCCGCTTCTTCTCCTTCTCCCTCA  
TCGAGGGCTACATCTCCCTGGTATGGACGTGCAGACGCAGCAGAGGTTTCTAGTAACTTGCTGTTTCA  
AAGCGCATCCGGAGAGCTCTGGAAGATGGTCCGGATTGGAGGACAGCCCTGGGGTTTGATGAGTGTGCC  
ATCGTGGCCAGATCTCAGAGCCCTTGGCTGCTGCAGACATCCCAGCCTACTACATCAGTACTTTCAAGT  
TTGATCATGCACCTGTCCCCGAAGAGAACATCAATGGTGCATCAGTCCCTGAAGGTGAGCCAAAGCAGA  
GAAGCAC

**ACGCGT**ACGCGGCCGCTCGAGCAGAACTCATCTCAGAAGAGGATCTGGCAGCAAATGATATCCTGGATT  
ACAAGGATGACGACGATAAGGTTTAA



[View online »](#)

**Protein Sequence:** >RC227843 representing NM\_001145063  
Red=Cloning site Green=Tags(s)

MELHILEHRLQVASVANESIPLFTYGLIKLAFLLSSKTRCKFFSLTETPEDYTIIVDEEGFLELPSSHELS  
 VADATWLALNVVSGGGSFSSSQPIGVTKIAKSVIAPLADQNISVFMLSTYQTDILVRRERDLPFVTHLS  
 SEFTILRVVNGETVAAENLGITNGFVKPKLVQRPVIHPLSSPSNRFCVTSLDPDTLPAVATLLMDVMFY  
 NGVKDPMATGDDCGHIRFFSFLIEGYISLVMVDVQTQQRFPNLLFTSASGELWKMVRIGGQPLGFDECG  
 IVAQISEPLAAADIPAYYISTFKFDHALVPEENINGVISALKVSAEKH

TRTRPLEQKLISEEDLAANDILDYKDDDDKV

**Chromatograms:** [https://cdn.origene.com/chromatograms/mk8037\\_d01.zip](https://cdn.origene.com/chromatograms/mk8037_d01.zip)

**Restriction Sites:** SgfI-MluI

**Cloning Scheme:**

Cloning sites used for ORF Shuttling:



\* The last codon before the Stop codon of the ORF

**ACCN:** NM\_001145063

**ORF Size:** 987 bp

**OTI Disclaimer:** The molecular sequence of this clone aligns with the gene accession number as a point of reference only. However, individual transcript sequences of the same gene can differ through naturally occurring variations (e.g. polymorphisms), each with its own valid existence. This clone is substantially in agreement with the reference, but a complete review of all prevailing variants is recommended prior to use. [More info](#)

**OTI Annotation:** This clone was engineered to express the complete ORF with an expression tag. Expression varies depending on the nature of the gene.

**Components:** The ORF clone is ion-exchange column purified and shipped in a 2D barcoded Matrix tube containing 10ug of transfection-ready, dried plasmid DNA (reconstitute with 100 ul of water).

- Reconstitution Method:**
1. Centrifuge at 5,000xg for 5min.
  2. Carefully open the tube and add 100ul of sterile water to dissolve the DNA.
  3. Close the tube and incubate for 10 minutes at room temperature.
  4. Briefly vortex the tube and then do a quick spin (less than 5000xg) to concentrate the liquid at the bottom.
  5. Store the suspended plasmid at -20°C. The DNA is stable for at least one year from date of shipping when stored at -20°C.

**RefSeq:** [NM\\_001145063.1](#), [NP\\_001138535.1](#)

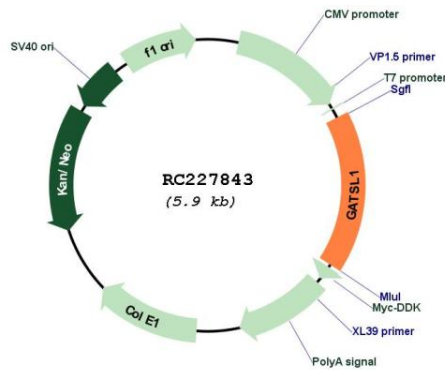
**RefSeq ORF:** 989 bp

**Locus ID:** 389523

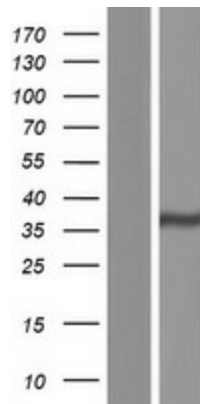
**Cytogenetics:** 7q11.23

**MW:** 35.9 kDa

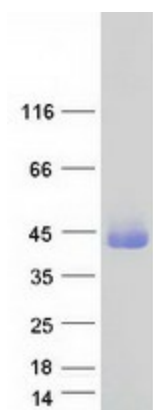
**Product images:**



Circular map for RC227843



Western blot validation of overexpression lysate (Cat# [LY428671]) using anti-DDK antibody (Cat# [TA50011-100]). Left: Cell lysates from untransfected HEK293T cells; Right: Cell lysates from HEK293T cells transfected with RC227843 using transfection reagent MegaTran 2.0 (Cat# [TT210002]).



Coomassie blue staining of purified GATSL1 protein (Cat# [TP327843]). The protein was produced from HEK293T cells transfected with GATSL1 cDNA clone (Cat# RC227843) using MegaTran 2.0 (Cat# [TT210002]).