

Product datasheet for RC227840

KIAA1239 (NWD2) (NM_001144990) Human Tagged ORF Clone

Product data:

Product Type:	Expression Plasmids
Product Name:	KIAA1239 (NWD2) (NM_001144990) Human Tagged ORF Clone
Tag:	Myc-DDK
Symbol:	KIAA1239
Synonyms:	KIAA1239
Mammalian Cell Selection:	Neomycin
Vector:	pCMV6-Entry (PS100001)
E. coli Selection:	Kanamycin (25 ug/mL)
ORF Nucleotide Sequence:	>RC227840 representing NM_001144990 Red=Cloning site Blue=ORF Green=Tags(s)

TTTTGTAATACGACTCACTATAGGGCGGCCGGGAATTCGTCGACTGGATCCGGTACCGAGGAGATCTGCCGCCGCGATCGCC

ATGTGGCCGGCCGGCGCGGGCCACCAAGCTGCCCTGTCCCGAGACTCTGCGCTCCGGCGGGCGGCTTTCTCTGGGAACCTCACGGCCCTGCCCTCTCACCTCGTGCCCGCCGGCCGACGCGTCCGGGTCTTCATCAGCGCCAACCCGAAGATACGGGAGCAGAAAGACAGGCGCTAAGAGAAAATGTATATCCTAAACTGAGAGAATTCGACAGAGAAAACATGGATTGGAATTTTCAGGTCATAGATCTGTACTGGGAGTGGAGAAGATGAGTGGACAGCCCAGAGCTCCAGAAGACCCGCATGAAGCTGCTGGAGAATTGCTTGAAGAACTTCTGCAGGTCCATGTTTTGTTGGACTATTAGGTGAAAAATATGGGAATATCCGAATCCCTGGAGAAGTTGAAGCCCTCAGAGTTGAAATGATTTTGGATGCCGCCATAGAGGCAAAGCTGGAGACCAAGTTGCTGGAGGAGTGGTACTGTCCGAGATGAGAAGCTCGGTGCCAGCAGCCTATTACCTCAGACCCAAGTCAGAAAATGCTGAGAAGCAATAGAAAATGC AATGCAGCCTTCTACCAATGCTGAAAACGAGAAGACATGGCAAGAGATATCAGATGAGATCAAGAAGATA TTTAAGGCTGCTGTAAGCTGTTACACGAAAAGGGTAAAATGAAACACAGCCAGGCTAAGAGGTACCTGT TCTCAGCTATAGAGGATGAGTTTGACTTTGCTCTGGGAAAACAACTCCAGCATTCTAAAGAAGTGTGT TTGCTACATTAGGAAAATGCTAACATTGAGCGCTTTGTGAAAATCCCAGAGATGGGAAAATACATGGATATAACTGGAACAGAACCCAGGATTATTCGGGACCCAGAAGCCCAAGAGAAGCTGATAAACTCAGGGATG AATTTATTCCTACTATTGTTGCATCATCTAATCTGAGAGTGACACATCTGTTACTCATTGTGACATGAA ACTAGGCTACTCCAAGAAATAGAAAATCATTACATCGAAGGACTTGGTAAACAATTTTATGAGGACATG ATTGATATAATTCAGGCAACGATACAACAGAAATTTGACACTGAAACTGATACACTCTATGATGAAATCC TTCAACATTTCATCATTATGTA AACATACGCTCCTTCTATGAGTACAAATGTGAATCTCTAAACATAGT GCATAACTACATTCTTCCAAGCAAAGCTGGACACATCAACCTCTTATTATATGTTGGGCCATGCACT GGGAAAGACCTTCTGCTAGCTGAAGTAGCAAAGAAGGCTTATGGCTGGCTACATGAGGACACAGGACCAG AATCTGACCCAGTAGTCATCGTGAGATTCTAGGAACGACAGACATGAGCTCTGACCTTAGGACTCTCCT TCTAAGTGTGTTGTAACAATTGGCAGTTAACTACCGGTGTCTGGTCAAAGCTACCTAAGAAGATCCAT



[View online »](#)

GACCTCTGTGACTTATTTATAAATCTTTTGAATGAGTCTTCACTGCAGAGACCTCTAGTCATAATATTCG
 ATGCACTAGAGCAGCTCTCAGAGAATGATGATGCCAGGAAGCTTTGGTGGCTCCCAGCTCACCTGCCCG
 CTTTGTCCGGATAGTCCCTTCCACGCTGCCCAACAACATGGGATCTTGCAGAACTAAGGTGCCTTATC
 CATGAAGAAGACAACATACATCGAGCTGATCCCGGAGACAGGAAGATGTGCAGCCAGGTCCTCAAACACC
 AGCTGTGCGCGTCAAAGGAAGGTCACATCAGGCCAGCAGATTTATGTGAACAATGCATTATCCAAGTG
 CACACTGCCAATGTTTGTGAACCTGACCTTCAGGGAGGTGAGGCCACTGGAGATCTCACAAGACGTCGAT
 GAATCTCCCTCTGTGACCCGTTCAATGAAAGTATAGAGCAGTTATTCTGGTCTTGGAGAAGAAGTGTG
 GTCAGAAAACCTGGTCTCTAGGGCTCTGGTTACATCACCATGGCCAAAATGGGTCTGAGTGAATGGAAC
 GGAGGATGTGTTAGCCCTAGACAACAGTGAATGAGTGAGCTCAAAGAAAACACCAGACCCAGCAATCCC
 CTGAGAGTACCTTACTTGTACATTGCAAGGCTCAAGGAGGGTCTCAGTGGATACCTAATAGAAAAGACATG
 TGAAAAATGTCACACTCTAGTCTGGGCCAACAGACACCTGCAGCTCATAGCCAGAAGCTATATCTGCA
 GGATGACAATGACCTGCGTGAATGCACACCATCTTAGCAGATTATTTCTGGGGTTTGGTCAGGGGGC
 AGGAGGAAAGCCTTCTGCCTTGGAGACCCCTACTTGAATGGTGCCTTGACTTGGAGAACAGAAGTTTGC
 TGGAGGAAAGAAAGCACTTCATGGAACAGGCTTCTTTGACAGGCAGGCTCCAGACCAGCCCTGGGTTTT
 CCAGTGAATCCCCTGGAACCTGACATCTTTTTCGTTAATCATCGAAAAATGTCTGAGCTGTTGTACCAC
 TTGACGAGGTGTGAAAAACCGATGACCTGCTTTACGGCATCATCATGAACTTCAGCTGGCTTTATACCA
 TGATCAAAATTGGCCAGTTTGACAAAGTCTTTCAGACATTGAGCTGGCTTACAACACTACTCGCAAGAGAA
 GGAGCTGAAGTTCCTGGCCAACACCCCTCCGCAGCATCAAAAACAAGGTCACTGCATTTCCCGGCTCCCTT
 TCAGCAGAGCTTCAGCAAAGACTGCTGCCTGTTGTAAGCTCCCTGCCAAAACCTTAGACATCTTCTTTAG
 AGTGTGATAAAGATGGGCCAAAATATTGCTCCATTGTACCACTGCATTTCATCCATGGATGTGACATACAG
 CCCAGAGCGTCTCCCTTATCATCCAGTCACTGCATGTCACAGAGATCCTGCCTACCTGTAACCCACAGC
 ACTGTCCTCACAGCTTTAGAAAATGGTTCCATCAGCACCTGGGATGTAGAGACTCGACGCTACTCAGGC
 AAATCACCACAGCCAGCTGTGATCCTGGCATGAAACTCACCAGTGATGAAAAGTACTGTGGTGGC
 TACAACAAATAACACCTTGTGATTTATGACAATGTCAATTCTTGCTCCTGTCTGAAGTAGAAAATCAAG
 GGGACCAAGCATGGAAGCAGCGCCACCTACATCAATGGATTTACTGTCCGCCAACACGCCCTTGAT
 GGCTCGAAGCCAGCAAAGATGTCAGTGTGATCGATCTGCTGTACGGATGGCCGCTTTACCAGTTCCTACTG
 CTGGTATGAAGTGACGTGCGTCCAGTGTCCCTGGATGGTCTGTATGCTTTCTGTGGCCAATACCTGAAC
 ACAACCACCATATTTCAATTTAGGGAGTGGAGAAAAGTTATGTACAGTGACATCAGAATTTTCAGGTGGAT
 TTGTGAAGTTTCTTTATCTTGGACACAGCTCAGGAAATGGTCATGGTAGACAGTGAAGGAAGTCTTTC
 TGTTTGAATACTGAGGACATTTCCAGCCCCAGCTGACTGATGACTTTGATTGCCGAAGAGAAGACAGT
 GAGGTGGTCAGCATTGAGCTTTTCAAGACCAAAGTGCAGTTCTGATCTGTAAGCCCTCAGCATTGAGC
 TCTTAGATACTGGTCTGTGGAAGGTGGCTGAAAAGTTCAGAGCCAAGCACACGAACGCTTTATATCTGC
 CGTGTGTCTAAAAATGGAGATTGTATCATCGCCACCATGGAAAATACCTCAGCTGTGTTTTTTGGAGG
 CGGGACACAGGACAGTGTATGGCAAGCTTGCAAGAAATCTCAGGTTCCATTGTTAAGTTAGTGAATCCA
 GTCACCACAATATGCTACTGTCTTTATCAACCAGTGGTGTCTTTCCATTTGGGACATAGATATAATCAC
 AGCTATGTCCAACATAGATAAGACTGGAAAACCCATCCAAAGTCTGTTGTTGCCTGCTAGAGGGGAAATC
 ATTTACTCCCTGGATGGATCCGATTGTGTTTATAAGTGGAACTTCAGCAGTGGCTTCATCGAAGCAGTAT
 TCAAGCATGAAGGAATAGTTGAACACTGTGTGTTAACATCCACCCGAGATATAATGGTGACATCAGATGA
 CAAAAGCAGCCAGTATGCTGCGCACACCAGCAGTGGTAAAACCTTTTTTGAATTAACGGGCAGAGAATA
 TCTCAGCTGCTGATTACACACAATGACCAGTTTGTGGTCTGCTGTGAGGAAAATGCCTCCAGGGTTT
 GGAGGCTCGCCACAGGCCACAGGGTCTGCAACATTCTGACCACCTTGCAGAATGCCTTTATTACCTCCGC
 AAATACCTTCGTGGTGGGAATGACTAAAAGCAAAGTGTGGCAGTCACTTTGGACAGGAAGTATCACC
 AAGAAATTTTGTGTGAAGATGGGACCACCATCGTGAATTTTAAATTAATCCCTGACTGCTCTGATATCA
 TCGTGTATCACATCGGCCGAGACTGTGAACATCTGGAGTCTGACAGATGAAGTATCTGTGCGCGCT
 GCAACTCCAAACAACCTTCTGAAAAATCTGGAGGACTTTGAAATTTCTCCCAATGGAAAGCTAGGCATT
 ATAGCCAGGGGAGATGAAAACATCAATGTGCTAGATTTATACAGTGGTAAATTGCCGGTGGTTCACGCCCT
 CTGGGATCATCTGGCGGAGAGGTTGTCTCGGGATGGTGCCTACCTGGTATACATTTGTTCCGAAATGG
 GGAGGAGGAGGATGAAAATGGTGAATATTCAGTTAATTGTAATGAGACTGGCAGATGGCAAAAATATC
 GGTGCTTGTCCCTTTACAAAACACCAACTTCTTTCGACTCTCCAGAGGCACCTGAACATCATTGTGG
 GCTTTGATGATGGGAGTATAGGGATCTACACGGTAGTAGACCGTGTAGATGCTGCACTGAAAATCAAAAT
 TGCCACTTCAAATAGCAGACAAATTTTCAACAATGCAACACACACCTCCAGGCCAAAGTGTAAACAGTTAT
 TGTTTTAAATATCTGTGGATTGCTTATGGAGAGAGTCCACTGAGGTCTTTGCAAGAGACAGCCCATCA

CAGTTAGTGA CTCTACTGAGTCCAATGAAGCAACACCCTCCAAGAAACACA ACTCTTGTATGAGCGGGT
ATGCTCGGCCCTAGAAGCCAGGGGCCACAGCTATGCCCTGATAAC

ACGCGTACGCGGCCGCTCGAGCAGAACTCATCTCAGAAGAGGATCTGGCAGCAATGATATCCTGGATT
ACAAGGATGACGACGATAAGGTTTAA

Protein Sequence: >RC227840 representing NM_001144990
Red=Cloning site Green=Tags(s)

MWPAGAGTKLPCPRDSALRRAAFSGNLTALPSHLVPAGRSVRVFI SANPEDTGAERQALRENVYPKLREF
CRENYGLEFQVIDLYWGVEEDEWDSPQLKTRMKLLENCLKTSAGPCFVGLLGEKYGNIRIPGEVEASEF
EMILDAAIEAKLETKLLLEEWYCRDENSVPAAAYLRPKSEMLRSNRNAMQPSTNAENEKTWQEISDEIKKI
FKA AVKLLHEKGMKHSQAKRYLFS AIEDEFDFALGKQTPAFLKCKVCYIRKIANIERFVKIPEMGKYMD
ITGTEPRIIRDPEAQEKLIKLRDEFIPTIVASSNLRVYTSVTHCDMKLGYSQEIENHYIEGLGKQFYEDM
IDIIQATIQQNFDTETDLYDEILQHSSLCKTYASFYEYKCESLNIVHNYILPSKAGHINPLIIYGGPCT
GKTL LLA EVAKKAYGWLHEDTGPESDPVVIVRFLGTTDMSSDLRTLLLSVCEQLAVNYRCLVQSYPKKIH
DLCDLFINLLNESSLQRPLVIIFDALQLSENDDARKLWLP AHLPRFVRIVLSTLPNKHGILQKLRCLI
HEEDNYIELIPDRKMCSQVLKHQLLRVKRKTSGQQIYVNNALSKCTLPMFVNLTFREVRHWRSHKDVD
ESSLSVTVHESIEQLFWSLEKCKGQKLVSRALGYITMAKMGLSEMELEDV LALDNSVMSELKENTRPSNP
LRVPYLYIARLKEGLSGYLIERHVKNVTLVWANRHLQLIAQKLYLQDDNDLREMHTILADYFLGVWSSG
RRKAFCLIEDPYLNGCLDENRSLLEEKHFMEQASFDROAPDQPVWFQCNPLEPDIFFVNHKMSSELLYH
LTRCGKTDLLYGIIMNFSWLYTMIKIGQFDKVLSDIELAYNYSQEKELKFLANTLRSIKNKVTAFFPGL
SAELQQRLLPVVSSLPKLRHLLLECDKDGPKYCSIVPLHSSMDVTYSPERLPLSSSHLHVTEILPTCNPS
TVLTALENGSISTWDVETRQLLRQITTAQSVILGMKLT SDEKYL VVATTNNTLLIYDNVNSCLLSEVEIK
GTKHGSATYINGFTLSANHALAWLEASKDVTVIDLLYGWPLYQFHCWYEVTCVQCSDGLYAFCGQYLN
TTTTIFHLGSGEKLCTVTSEFSGGFVKFLLILDTAQEMVMVDSEGLSVWNTEDEISSPQLTDDFDCRREDS
EVVSIELSEDQSAVLICKALSIELLDTLGWKVAEKFRAKHNERFISAVLSKNGDCIATMENTS AVFFWR
RDTGQCMASLQEISGSIVKLVKSSHNM LLSLSTSGVLSIWDIDIITAMSNIDKTGKPIQSLLLPARGEI
IYSLDGSDCVHKWNFSSGFIEAVFKHEGIVEHCVL TSTGDIMVTSDDKSSQYVWHTSSGENLFRINGQRI
SQQLLITHNDQFVVS LCEENASRVWRLATGHRVCNILLTTLQNAFITSANTFVVGMTKSKVLAVSLWTGSIT
KKFCCEDEGTTIVNFKLIPDCPDIIIVFITS AETVNIWSLTDEVICRRVQLPNNFLKNLEDFEISPNGKLG I
IARGDENINVL DLYSGKLRVVHASGIIWRQLSRDGRYLVIYICFRNGEEEDENGAI FSLIVMRLADGKNI
GACSLYKPTFLALSQRHLNII VGFDDGSI GIYTVVDRVDAALKIKIATSNSRQIFNNATHSRPKCNSY
CFKISVDCLWRESTEVFARDSPITVSDSTESNEATPSKKNHNSCYERVCSALEARGHSYAPDN

TRTRPLEQKLI SEEDLAANDILDYKDDDDKV

Chromatograms: https://cdn.origene.com/chromatograms/mk8037_d03.zip

Restriction Sites: SgfI-MluI

Cloning Scheme:


ACCN: NM_001144990

ORF Size: 5226 bp

OTI Disclaimer: The molecular sequence of this clone aligns with the gene accession number as a point of reference only. However, individual transcript sequences of the same gene can differ through naturally occurring variations (e.g. polymorphisms), each with its own valid existence. This clone is substantially in agreement with the reference, but a complete review of all prevailing variants is recommended prior to use. [More info](#)

OTI Annotation: This clone was engineered to express the complete ORF with an expression tag. Expression varies depending on the nature of the gene.

Components: The ORF clone is ion-exchange column purified and shipped in a 2D barcoded Matrix tube containing 10ug of transfection-ready, dried plasmid DNA (reconstitute with 100 ul of water).

- Reconstitution Method:**
1. Centrifuge at 5,000xg for 5min.
 2. Carefully open the tube and add 100ul of sterile water to dissolve the DNA.
 3. Close the tube and incubate for 10 minutes at room temperature.
 4. Briefly vortex the tube and then do a quick spin (less than 5000xg) to concentrate the liquid at the bottom.
 5. Store the suspended plasmid at -20°C. The DNA is stable for at least one year from date of shipping when stored at -20°C.

RefSeq: [NM_001144990.2](#)

RefSeq ORF: 5229 bp

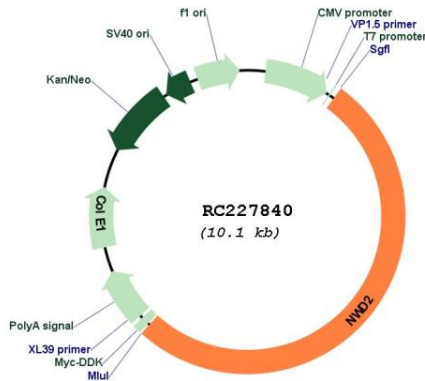
Locus ID: 57495

UniProt ID: [Q9ULI1](#)

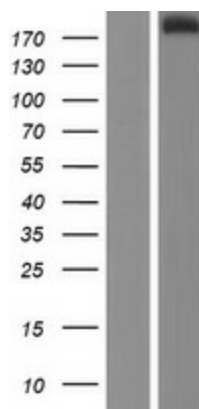
Cytogenetics: 4p14

MW: 197.3 kDa

Product images:



Circular map for RC227840



Western blot validation of overexpression lysate (Cat# [LY428628]) using anti-DDK antibody (Cat# [TA50011-100]). Left: Cell lysates from untransfected HEK293T cells; Right: Cell lysates from HEK293T cells transfected with RC227840 using transfection reagent MegaTran 2.0 (Cat# [TT210002]).