

Product datasheet for **RC227831**

FAM86B2 (NM_001137610) Human Tagged ORF Clone

Product data:

Product Type:	Expression Plasmids
Product Name:	FAM86B2 (NM_001137610) Human Tagged ORF Clone
Tag:	Myc-DDK
Symbol:	FAM86B2
Mammalian Cell Selection:	Neomycin
Vector:	pCMV6-Entry (PS100001)
E. coli Selection:	Kanamycin (25 ug/mL)
ORF Nucleotide Sequence:	>RC227831 representing NM_001137610 Red=Cloning site Blue=ORF Green=Tags(s)

TTTTGTAATACGACTCACTATAGGGCGGCCGGAATTCGTCGACTGGATCCGGTACCGAGGAGATCTGCC
GCC**CGATCGCC**

ATGGCGCCCGAGGAGAACGCGGGGACCGAACTCTTGTGTCAGGGTTTTGAGCGCCGCTTCTGGCGGTGC
GCACACTGCGCTCCTTCCCCTGGCAGAGCTTAGAGGCAAAGTTAAGAGACTCATCAGATTCTGAGCTGCT
GCGGGATATTTTGCAGAAGACTGTGAGGCATCCTGTGTGTGTAAGCACCCGCCGTCAGTCAAGTATGCC
TGGTGTCTTCTCTCAGAAGTCAAAAAAGCACGAGGCTGTCCACACGGAGCCTTTGGACAAACTGTACG
AGGTGCTCGCGGAGACTCTGATGGCCAAGGAGTCCACCCAGGGCCACCGAGCTATTTGCTGTCTCAGG
AGGCTCAGTCACACTCTCCAAGAGCACAGCCATCATCTCCACGGTACCACAGGCCTGGTACATGGGAT
GCCGCCCTCTACCTTGCAGAATGGGCCATCGAGAACCCGGCAGCCTTCATTAACAGGACTGTCTAGAGC
TTGGCAGTGGTCCGGCCTCACAGGCCTTGCCATCTGCAAGATGTGCCGCCCGGGCATAACATCTTCAG
CGACCCTCACAGCCGGATCCTCGAGCAGCTCCGAGGGAATGTCCTTCTCAATGGCCTCTCATTAGAGGCA
GACATCACTGGCAACTTAGACAGCCCCAGGGTACAGTGGCCAGCTGGACTGGGACGTAGCAATGGTCC
ATCAGCTCTCTGCCTCCAGCCAGATGTTGTATTGCAGCAGACGTGCTGTATTGCCAGAAGCCATCGT
GTCGCTGGTGGGGTCTGCAGAGGCTGGCTGCCTGCCGGGAGCACAAAGCGGGCTCTGAGGTCTACGTG
GCCTTTACCGTCCGCAACCCAGAGACATGCCAGCTGTTACCACCGAGCTAGGCCGGGATGGGATCAGAT
GGGAAGCGGAAGTCTCATGACCAGAACTGTTCCCTATGGAGAGCACTTGGAGATGGCAATGCTGAA
CCTCACACTG

ACGCGTACGCGGCCGCTCGAGCAGAACTCATCTCAGAAGAGGATCTGGCAGCAAATGATATCCTGGATT
ACAAGGATGACGACGATAAGGTTTAA



Protein Sequence: >RC227831 representing NM_001137610
Red=Cloning site Green=Tags(s)

MAPEENAGTELLLQGFERRFLAVRTLRSFPWQSLEAKLRDSSSELLRDILQKTVRHPVCVKHPPSVKYA
 WCFLSELIKKHEAVHTEPLDKLYEVLAETLMAKESTQGHRSYLLSSGGSVTLKSTAIISHGTTGLVTWD
 AALYLAEWAIENPAAFINRTVLELGGAGLTGLAICKMCRPRAYIFSDPHSRILEQLRGNVLLNGLSLEA
 DITGNLDSRPRTVAQLDWDVAMVHQLSAFQPDVVIAADVLYCPEAIVSLVGVLQRLAACREHKRAPEVYV
 AFTVRNPETCQLFTTELGRDGIRWEAEAHHDQKLFYPYGEHLEMAMNLTL

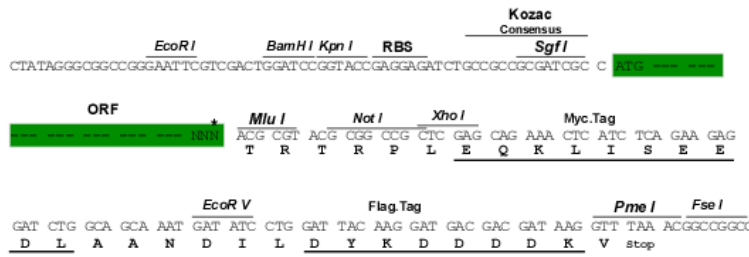
TRTRPLEQKLISEEDLAANDILDYKDDDDKV

Chromatograms: https://cdn.origene.com/chromatograms/mk8037_d06.zip

Restriction Sites: Sgfl-MluI

Cloning Scheme:

Cloning sites used for ORF Shuttling:



ACCN: NM_001137610

ORF Size: 990 bp

OTI Disclaimer: The molecular sequence of this clone aligns with the gene accession number as a point of reference only. However, individual transcript sequences of the same gene can differ through naturally occurring variations (e.g. polymorphisms), each with its own valid existence. This clone is substantially in agreement with the reference, but a complete review of all prevailing variants is recommended prior to use. [More info](#)

OTI Annotation: This clone was engineered to express the complete ORF with an expression tag. Expression varies depending on the nature of the gene.

Components: The ORF clone is ion-exchange column purified and shipped in a 2D barcoded Matrix tube containing 10ug of transfection-ready, dried plasmid DNA (reconstitute with 100 ul of water).

- Reconstitution Method:**
1. Centrifuge at 5,000xg for 5min.
 2. Carefully open the tube and add 100ul of sterile water to dissolve the DNA.
 3. Close the tube and incubate for 10 minutes at room temperature.
 4. Briefly vortex the tube and then do a quick spin (less than 5000xg) to concentrate the liquid at the bottom.
 5. Store the suspended plasmid at -20°C. The DNA is stable for at least one year from date of shipping when stored at -20°C.

RefSeq: [NM_001137610.2](#)

RefSeq ORF: 993 bp

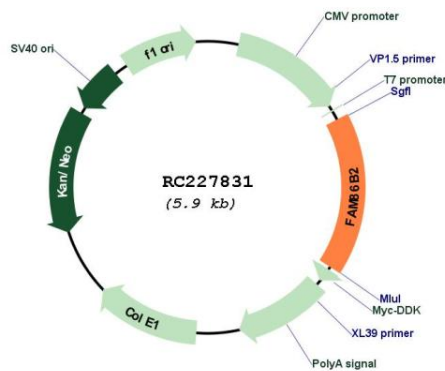
Locus ID: 653333

UniProt ID: [P0C5J1](#)

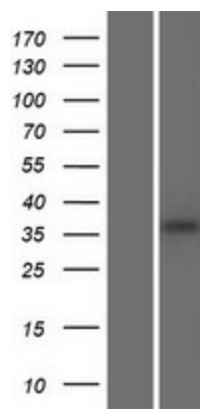
Cytogenetics: 8p23.1

MW: 36.6 kDa

Product images:



Circular map for RC227831



Western blot validation of overexpression lysate (Cat# [LY427947]) using anti-DDK antibody (Cat# [TA50011-100]). Left: Cell lysates from untransfected HEK293T cells; Right: Cell lysates from HEK293T cells transfected with RC227831 using transfection reagent MegaTran 2.0 (Cat# [TT210002]).