

## Product datasheet for RC227822

### ABHD11 (NM\_148913) Human Tagged ORF Clone

#### Product data:

Product Type:	Expression Plasmids
Product Name:	ABHD11 (NM_148913) Human Tagged ORF Clone
Tag:	Myc-DDK
Symbol:	ABHD11
Synonyms:	PP1226; WBSCR21
Mammalian Cell Selection:	Neomycin
Vector:	pCMV6-Entry (PS100001)
E. coli Selection:	Kanamycin (25 ug/mL)
ORF Nucleotide Sequence:	>RC227822 representing NM_148913 Red=Cloning site Blue=ORF Green=Tags(s)

TTTTGTAATACGACTCACTATAGGGCGGCCGGAATTCGTCGACTGGATCCGGTACCGAGGAGATCTGCC  
GCC**CGATCGC**C

ATGCGAGCCGGCCAACAGCTTGCAAGCATGCTCCGCTGGACCCGAGCCTGGAGGCTCCCGCTGAGGGAC  
TCGGCCCCACGGCCCTAGCTTCGCGAGGGTGCCTGTCGCACCCAGCAGCAGCAGCGGGCCGAGGGGG  
CGCCGAGCCGAGGCTTCTGGACGGGGAGGCAGCCCTCCCGCCGTCGTCTTTTGCACGGCTCTTCGGC  
AGCAAACTAACTCACTCCATCGCCAAGATCTTGGCCAGCAGACAGGCCGTAGGGTGTGACGGTGG  
ATGCTCGTAACCACGGTGACAGCCCCACAGCCAGACATGAGCTACGAGATCATGAGCCAGGACCTGCA  
GGACCTTCTGCCCCAGCTGGGCCTGGTGCCTGGTGCCTGGTGCCTGGCCACAGCATGGGAGGAAAGACAGCC  
ATGCTGTGGCACTACAGAGGCCAGAGCTGGTGGAACTCTCATTGCTGTAGATATCAGCCAGTGGAAA  
GCACAGGTGTCTCCCACTTTGCAACCTATGTGGCAGCCATGAGGGCCATCAACATCGCAGATGAGCTGCC  
CCGCTCCCGTGGCCGAAAACCTGGCGGATGAACAGCTCAGTTCTGTATCCAGGACATGGCCGTGCGGCAG  
CACCTGCTCACTAACCTGGTAGAGGTAGACGGGCGCTTCGTGTGGAGGGTGAACCTGGATGCCCTGACCC  
AGCACCTAGACAAGATCTTGGCTTTCCACAGAGGCAGGAGTCTACCTCGGGCCAACTCTTTCTCCT  
TGGTGGAACTCCAGTTCGTGCATCCCAGCCACCACCTGAGATTATGCGGCTCTCCCTCGGGCCAG  
ATGCAGACGGTGCCGAACGCTGGCACTGGATCCACGCTGACCGCCACAGGACTTCATAGCTGCCATCC  
GAGGCTTCTGGTC

**ACGCGT**ACGCGGCCGCTCGAGCAGAACTCATCTCAGAAGAGGATCTGGCAGCAATGATATCCTGGATT  
ACAAGGATGACGACGATAAGGTTTAA

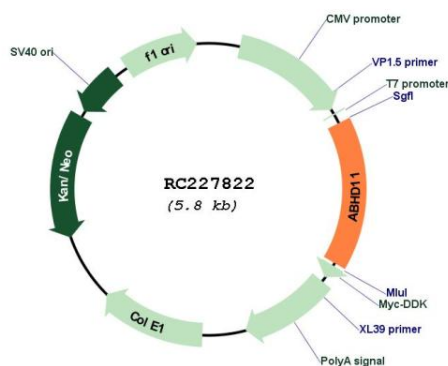


[View online »](#)

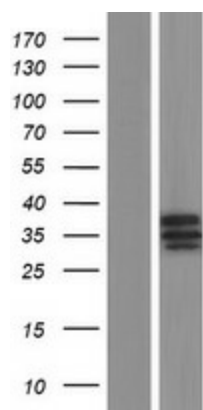


<b>OTI Annotation:</b>	This clone was engineered to express the complete ORF with an expression tag. Expression varies depending on the nature of the gene.
<b>Components:</b>	The ORF clone is ion-exchange column purified and shipped in a 2D barcoded Matrix tube containing 10ug of transfection-ready, dried plasmid DNA (reconstitute with 100 ul of water).
<b>Reconstitution Method:</b>	<ol style="list-style-type: none"><li>1. Centrifuge at 5,000xg for 5min.</li><li>2. Carefully open the tube and add 100ul of sterile water to dissolve the DNA.</li><li>3. Close the tube and incubate for 10 minutes at room temperature.</li><li>4. Briefly vortex the tube and then do a quick spin (less than 5000xg) to concentrate the liquid at the bottom.</li><li>5. Store the suspended plasmid at -20°C. The DNA is stable for at least one year from date of shipping when stored at -20°C.</li></ol>
<b>RefSeq:</b>	<a href="#">NM_148913.3</a> , <a href="#">NP_683711.1</a>
<b>RefSeq ORF:</b>	900 bp
<b>Locus ID:</b>	83451
<b>UniProt ID:</b>	<a href="#">Q8NFV4</a>
<b>Cytogenetics:</b>	7q11.23
<b>MW:</b>	33.7 kDa
<b>Gene Summary:</b>	This gene encodes a protein containing an alpha/beta hydrolase fold domain. This gene is deleted in Williams syndrome, a multisystem developmental disorder caused by the deletion of contiguous genes at 7q11.23. [provided by RefSeq, Mar 2016]

## Product images:



Circular map for RC227822



Western blot validation of overexpression lysate (Cat# [LY430200]) using anti-DDK antibody (Cat# [TA50011-100]). Left: Cell lysates from untransfected HEK293T cells; Right: Cell lysates from HEK293T cells transfected with RC227822 using transfection reagent MegaTran 2.0 (Cat# [TT210002]).