

Product datasheet for RC227821

FAHD1 (NM_001142398) Human Tagged ORF Clone

Product data:

Product Type:	Expression Plasmids
Product Name:	FAHD1 (NM_001142398) Human Tagged ORF Clone
Tag:	Myc-DDK
Symbol:	FAHD1
Synonyms:	C16orf36; YISKL
Mammalian Cell Selection:	Neomycin
Vector:	pCMV6-Entry (PS100001)
E. coli Selection:	Kanamycin (25 ug/mL)
ORF Nucleotide Sequence:	>RC227821 representing NM_001142398 Red=Cloning site Blue=ORF Green=Tags(s)

TTTTGTAATACGACTCACTATAGGGCGCCGGGAATTCGTCGACTGGATCCGGTACCGAGGAGATCTGCC
GCC**CGATCGCC**

ATGGGAATCATGGCAGCATCCAGGCCATTGTCCCCTTCTGGGAGTGGGAAAGAACATCGTCTGCGTGG
GGAGGAACTACGCGGACCACGTCAGGGAGATGCGCAGCGCGGTGTTGAGCGAGCCCGTGTCTCCTGAA
GCCGTCCACGGCCTACGCGCCCGAGGGCTCGCCATCCTCATGCCCGGTACACTCGCAACCTGCACCAC
GAGCTGGAGCTGGGCGTGGTATGGGCAAGCGCTGCCCGCAGTCCCGAGGCTGCGGCCATGGACTACG
TGGGCGGCTATGCCCTGTGCCTGGATATGACCGCCGGGACGTGCAGGACGAGTGAAGAAGAAGGGGCT
GCCTGGACTCTGGCGAAGAGCTTCACGGCGTCTGCCCGGTACGCGGTTCTGTGCCAAGGAGAAGATC
CCTGACCCTCACAAGCTGAAGCTCTGGCTCAAGGTCAACGGCGAACTCAGACAGGAGGGTGAACATCCT
CCATGATTTTTTCCATCCCCTACATCATCAGCTATGTTTCTAAGATCATAACCTTGAAGAAGGAGATAT
TATCTTGACTGGGACGCCAAAGGGAGTTGGACCGTTAAAGAAAACGATGAGATCGAGGCTGGCATAAC
GGGCTGCCAAAGTCTCCTCAGCAACACTTCTGTGAGACTACAGGAA

ACGCGTACGCGGCGCTCGAGCAGAACTCATCTCAGAAGAGGATCTGGCAGCAATGATATCCTGGATT
ACAAGGATGACGACGATAAGGTTTAA



[View online »](#)

Protein Sequence: >RC227821 representing NM_001142398
Red=Cloning site Green=Tags(s)

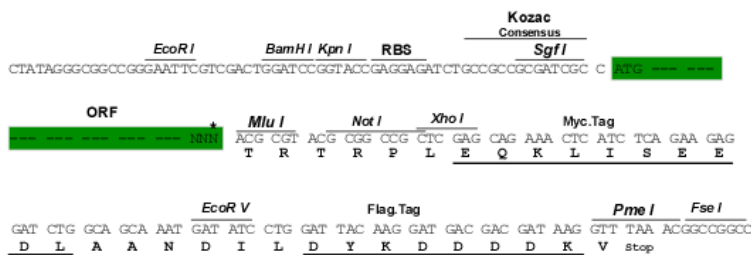
MGIMAASRPLSRFEWGWKNIVCVGRNYADHVREMRSAVLSEPVLFKLPSTAYAPEGSPILMPAYTRNLHH
 ELELGVVMGKRCRAVPEAAAMDYVGGYALCLDMTARDVQDECKKKGLPWTLAKSFATSCPVSFAFVPKEKI
 PDPHKLKLWLKVNGLRQEGETSSMIFSIPIYIISYVSKIITLEEGDIILGTGPKGVGPKENDEIEAGIH
 GLPKVSSATLPVRLQE

TRTRPLEQKLISEEDLAANDILDYKDDDDKV

Restriction Sites: SgfI-MluI

Cloning Scheme:

Cloning sites used for ORF Shuttling:



* The last codon before the Stop codon of the ORF

ACCN: NM_001142398

ORF Size: 678 bp

OTI Disclaimer: The molecular sequence of this clone aligns with the gene accession number as a point of reference only. However, individual transcript sequences of the same gene can differ through naturally occurring variations (e.g. polymorphisms), each with its own valid existence. This clone is substantially in agreement with the reference, but a complete review of all prevailing variants is recommended prior to use. [More info](#)

OTI Annotation: This clone was engineered to express the complete ORF with an expression tag. Expression varies depending on the nature of the gene.

Components: The ORF clone is ion-exchange column purified and shipped in a 2D barcoded Matrix tube containing 10ug of transfection-ready, dried plasmid DNA (reconstitute with 100 ul of water).

Reconstitution Method:

1. Centrifuge at 5,000xg for 5min.
2. Carefully open the tube and add 100ul of sterile water to dissolve the DNA.
3. Close the tube and incubate for 10 minutes at room temperature.
4. Briefly vortex the tube and then do a quick spin (less than 5000xg) to concentrate the liquid at the bottom.
5. Store the suspended plasmid at -20°C. The DNA is stable for at least one year from date of shipping when stored at -20°C.

RefSeq: [NM_001142398.1](#), [NP_001135870.1](#)

RefSeq ORF: 681 bp

Locus ID: 81889

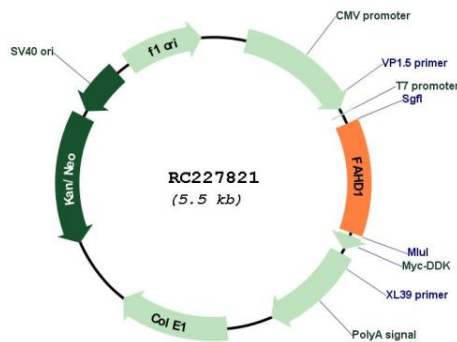
UniProt ID: [Q6P587](#)

Cytogenetics: 16p13.3

MW: 24.7 kDa

Gene Summary: Probable mitochondrial acylpyruvase which is able to hydrolyze acetylpyruvate and fumarylpyruvate in vitro (PubMed:15551868, PubMed:21878618). Also has oxaloacetate decarboxylase activity (PubMed:25575590).[UniProtKB/Swiss-Prot Function]

Product images:



Circular map for RC227821