

Product datasheet for RC227799

HSD17B13 (NM_001136230) Human Tagged ORF Clone

Product data:

Product Type:	Expression Plasmids
Product Name:	HSD17B13 (NM_001136230) Human Tagged ORF Clone
Tag:	Myc-DDK
Symbol:	HSD17B13
Synonyms:	HMFN0376; NIIL497; SCDR9; SDR16C3
Mammalian Cell Selection:	Neomycin
Vector:	pCMV6-Entry (PS100001)
E. coli Selection:	Kanamycin (25 ug/mL)
ORF Nucleotide Sequence:	>RC227799 representing NM_001136230 Red=Cloning site Blue=ORF Green=Tags(s)

TTTTGTAATACGACTCACTATAGGGCGGCCGGAATTCGTCGACTGGATCCGGTACCGAGGAGATCTGCC
GCC**CGATCGCC**

ATGAACATCATCCTAGAAATCCTTCTGCTTCTGATCACCATCATCTACTCCTACTGGAGTCGTTGGTGA
AGTTTTTCATTTCCTCAGAGGAGAAAATCTGTGGCTGGGGAGATTGTTCTCATTACTGGAGCTGGGCATGG
AATAGGCAGGCAGACTACTTATGAATTTGCAAAACGACAGAGCATATTGGTTCTGTGGGATTAATAAG
GTGAAGAAAGAAGTGGGTGATGTAACAATCGTGGTGAATAATGCTGGGACAGTATATCCAGCCGATCTTC
TCAGCACCAAGGATGAAGAGATTACCAAGACATTTGAGGTCAACATCCTAGGACATTTTTGGATCACAAA
AGCACTTCTTCATCGATGATGGAGAGAAATCATGGCCACATCGTCACAGTGGCTTCAGTGTGCGGCCAC
GAAGGGATTTCCTTACCTCATCCCATATTGTTCCAGCAAATTTGCCGCTGTTGGCTTTCACAGAGGCTCTGA
CATCAGAACTTCAGGCCTTGGGAAAACTGGTATCAAAACCTCATGTCTCTGCCAGTTTTTGTGAATAC
TGGGTTACCAAAAAATCCAAGCACAAGATTATGGCCTGTATTGGAGACAGATGAAGTCGTAAGAAGTCTG
ATAGATGGAATACTTACCAATAAGAAAATGATTTTTGTTCCATCGTATATCAATATCTTCTGAGACTAC
AGAAGTTTCTTCTGAACGCGCCTCAGCGATTTAAATCGTATGCAGAATATTCAATTTGAAGCAGTGGT
TGCCACAAAATCAAAATGAAA

ACGCGTACGCGGCCGCTCGAGCAGAAACTCATCTCAGAAGAGGATCTGGCAGCAAATGATATCCTGGATT
ACAAGGATGACGACGATAAGGTTTAA



[View online »](#)

Protein Sequence: >RC227799 representing NM_001136230
Red=Cloning site Green=Tags(s)

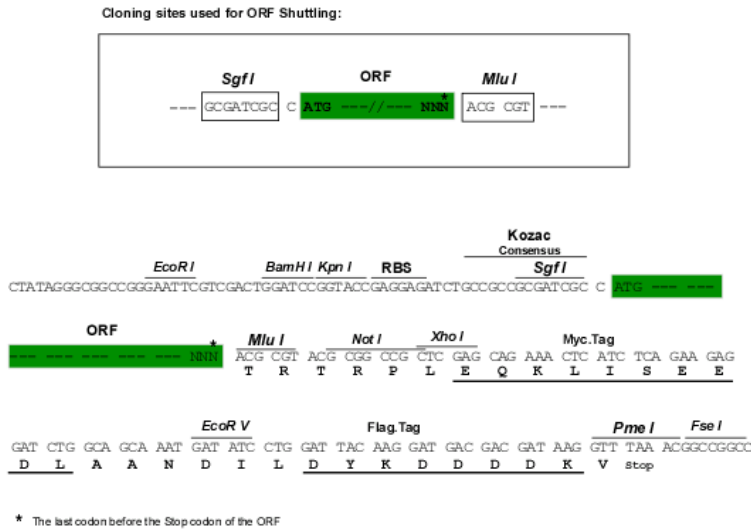
MNIILEILLLLITIIYSYLESLVKFFIPQRRKSVAGEIVLITGAGHGIGRQTTYEFAKRQSILVLWDINK
 VKKEVGDVTIVVNNAGTVYPADLLSTKDEEITKTFEVNILGHFWITKALLPSMMERNHGHIVTVASVCGH
 EGIPYLIPYCSSKFAAVGFHRGLTSELQALGKTGIKTSCLCPVFVNTGFKNPSTRLWPVLETDEVVRS
 LDGILTNNKMIFVPSYINIFRLRLQKFLPERASAILNRMQNIQFEAVVGHKIKMK

TRTRPLEQKLISEEDLAANDILDYKDDDDKV

Chromatograms: https://cdn.origene.com/chromatograms/ja1491_b12.zip

Restriction Sites: SgfI-MluI

Cloning Scheme:



ACCN: NM_001136230

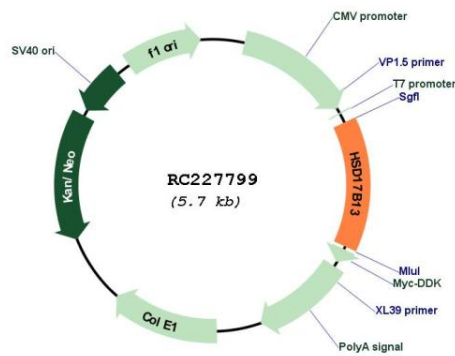
ORF Size: 792 bp

OTI Disclaimer: Due to the inherent nature of this plasmid, standard methods to replicate additional amounts of DNA in E. coli are highly likely to result in mutations and/or rearrangements. Therefore, OriGene does not guarantee the capability to replicate this plasmid DNA. Additional amounts of DNA can be purchased from OriGene with batch-specific, full-sequence verification at a reduced cost. Please contact our customer care team at custsupport@origene.com or by calling 301.340.3188 option 3 for pricing and delivery.

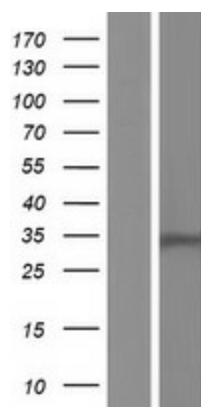
The molecular sequence of this clone aligns with the gene accession number as a point of reference only. However, individual transcript sequences of the same gene can differ through naturally occurring variations (e.g. polymorphisms), each with its own valid existence. This clone is substantially in agreement with the reference, but a complete review of all prevailing variants is recommended prior to use. [More info](#)

OTI Annotation: This clone was engineered to express the complete ORF with an expression tag. Expression varies depending on the nature of the gene.

Components:	The ORF clone is ion-exchange column purified and shipped in a 2D barcoded Matrix tube containing 10ug of transfection-ready, dried plasmid DNA (reconstitute with 100 ul of water).
Reconstitution Method:	<ol style="list-style-type: none"> 1. Centrifuge at 5,000xg for 5min. 2. Carefully open the tube and add 100ul of sterile water to dissolve the DNA. 3. Close the tube and incubate for 10 minutes at room temperature. 4. Briefly vortex the tube and then do a quick spin (less than 5000xg) to concentrate the liquid at the bottom. 5. Store the suspended plasmid at -20°C. The DNA is stable for at least one year from date of shipping when stored at -20°C.
RefSeq:	<u>NM_001136230.3</u>
RefSeq ORF:	795 bp
Locus ID:	345275
UniProt ID:	<u>Q7Z5P4</u>
Cytogenetics:	4q22.1
Protein Families:	Druggable Genome, Secreted Protein, Transmembrane
MW:	29.4 kDa

Product images:


Circular map for RC227799



Western blot validation of overexpression lysate (Cat# [LY427863]) using anti-DDK antibody (Cat# [TA50011-100]). Left: Cell lysates from untransfected HEK293T cells; Right: Cell lysates from HEK293T cells transfected with RC227799 using transfection reagent MegaTran 2.0 (Cat# [TT210002]).