

Product datasheet for **RC227797**

FGF1 (NM_001144935) Human Tagged ORF Clone

Product data:

Product Type: Expression Plasmids
Product Name: FGF1 (NM_001144935) Human Tagged ORF Clone
Tag: Myc-DDK
Symbol: FGF1
Synonyms: AFGF; ECGF; ECGF-beta; ECGFA; ECGFB; FGF-1; FGF-alpha; FGFA; GLIO703; HBGF-1; HBGF1
Mammalian Cell Selection: Neomycin
Vector: pCMV6-Entry (PS100001)
E. coli Selection: Kanamycin (25 ug/mL)
ORF Nucleotide Sequence: >RC227797 ORF sequence
Red=Cloning site Blue=ORF Green=Tags(s)

TTTTGTAATACGACTCACTATAGGGCGGCCGGAATTCGTCGACTGGATCCGGTACCGAGGAGATCTGCC
GCC**CGATCGCC**

ATGGCTGAAGGGGAAATCACCACCTTCACAGCCCTGACCGAGAAGTTAATCTGCCTCCAGGAATTACA
AGAAGCCCAAACCTCTACTGTAGCAACGGGGCCACTTCTGAGGATCCTTCCGGATGGCACAGTGGA
TGGGACAAGGGACAGGAGCGACCAGCACATTAGCTGCAGCTCAGTCCGAAAGCGTGGGGAGGTGTAT
ATAAAGAGTACCGAGACTGGCCAGTACTGGCCATGGACACCGACGGGCTTTTATACGGCTCACAGACAC
CAAATGAGGAATGTTTGTCTGAAAGGCTGGAGGAGAACCATTACAACACCTATATATCCAAGAAGCA
TGCAGAGAAGAATTGGTTTGTTCCTCAAGAAGATGGGAGCTCAAACGCGGTCTCGGACTCACTAT
GGCCAGAAAGCAATCTTGTCTCCCTGCCAGTCTCTCTGAT

ACGCGTACGCGGCCGCTCGAGCAGAACTCATCTCAGAAGAGGATCTGGCAGCAAATGATATCCTGGATT
ACAAGGATGACGACGATAAGGTTTAA

Protein Sequence: >RC227797 protein sequence
Red=Cloning site Green=Tags(s)
MAEGEITFTALTEKFNLPNGYKPKLLYCSNGGHFLRILPDGTVDGTRDRSDQHIQLQLSAESVGEVY
IKSTETGQYLAMDTDGLLYGSQTPNEECLFLERLEENHYNTYISKKHAENWVGLKKNKSGCKRGPRTY
GQKAILFLPLPVSSD

TRTRPLEQKLISEEDLAANDILDYKDDDDKV

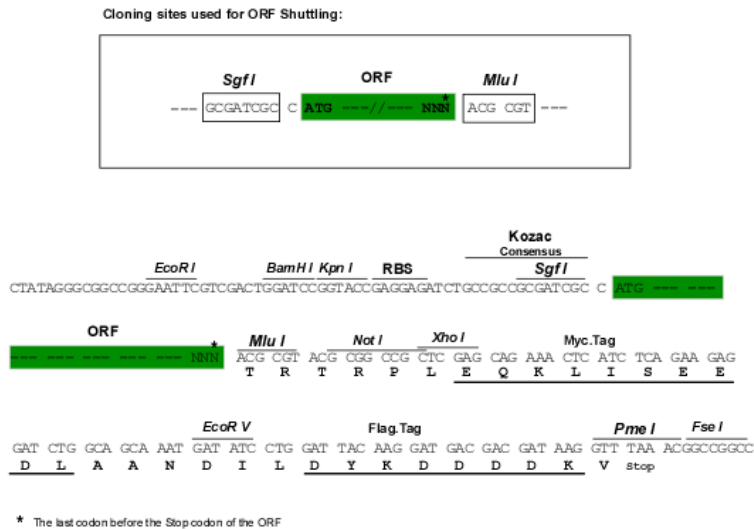
Chromatograms: https://cdn.origene.com/chromatograms/mk6033_a05.zip



[View online >](#)

Restriction Sites: SgfI-MluI

Cloning Scheme:



ACCN: NM_001144935

ORF Size: 465 bp

OTI Disclaimer: The molecular sequence of this clone aligns with the gene accession number as a point of reference only. However, individual transcript sequences of the same gene can differ through naturally occurring variations (e.g. polymorphisms), each with its own valid existence. This clone is substantially in agreement with the reference, but a complete review of all prevailing variants is recommended prior to use. [More info](#)

OTI Annotation: This clone was engineered to express the complete ORF with an expression tag. Expression varies depending on the nature of the gene.

Components: The ORF clone is ion-exchange column purified and shipped in a 2D barcoded Matrix tube containing 10ug of transfection-ready, dried plasmid DNA (reconstitute with 100 ul of water).

- Reconstitution Method:
1. Centrifuge at 5,000xg for 5min.
 2. Carefully open the tube and add 100ul of sterile water to dissolve the DNA.
 3. Close the tube and incubate for 10 minutes at room temperature.
 4. Briefly vortex the tube and then do a quick spin (less than 5000xg) to concentrate the liquid at the bottom.
 5. Store the suspended plasmid at -20°C. The DNA is stable for at least one year from date of shipping when stored at -20°C.

RefSeq: [NM_001144935.2](#)

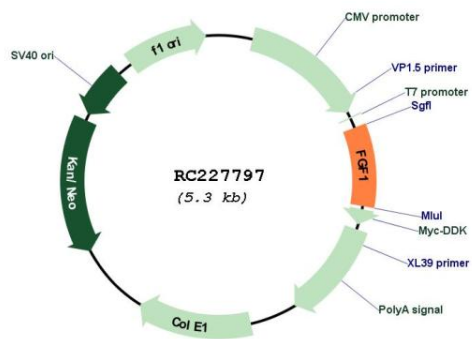
RefSeq Size: 3781 bp

RefSeq ORF: 468 bp

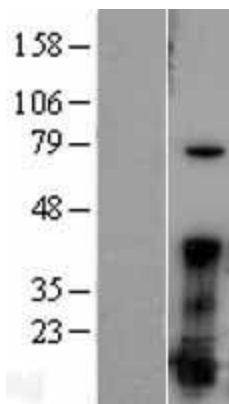
Locus ID: 2246

UniProt ID: [P05230](#)
Cytogenetics: 5q31.3
Protein Families: Druggable Genome, Secreted Protein
Protein Pathways: MAPK signaling pathway, Melanoma, Pathways in cancer, Regulation of actin cytoskeleton
MW: 17.5 kDa
Gene Summary: The protein encoded by this gene is a member of the fibroblast growth factor (FGF) family. FGF family members possess broad mitogenic and cell survival activities, and are involved in a variety of biological processes, including embryonic development, cell growth, morphogenesis, tissue repair, tumor growth and invasion. This protein functions as a modifier of endothelial cell migration and proliferation, as well as an angiogenic factor. It acts as a mitogen for a variety of mesoderm- and neuroectoderm-derived cells in vitro, thus is thought to be involved in organogenesis. Multiple alternatively spliced variants encoding different isoforms have been described. [provided by RefSeq, Jan 2009]

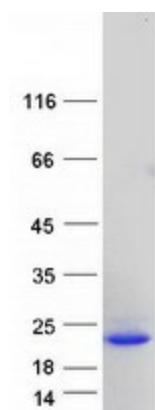
Product images:



Circular map for RC227797



Western blot validation of overexpression lysate (Cat# [LY428588]) using anti-DDK antibody (Cat# [TA50011-100]). Left: Cell lysates from untransfected HEK293T cells; Right: Cell lysates from HEK293T cells transfected with RC227797 using transfection reagent MegaTran 2.0 (Cat# [TT210002]).



Coomassie blue staining of purified FGF1 protein (Cat# [TP327797]). The protein was produced from HEK293T cells transfected with FGF1 cDNA clone (Cat# RC227797) using MegaTran 2.0 (Cat# [TT210002]).