

## Product datasheet for **RC227796**

### CCDC169 (NM\_001144981) Human Tagged ORF Clone

#### Product data:

Product Type:	Expression Plasmids
Product Name:	CCDC169 (NM_001144981) Human Tagged ORF Clone
Tag:	Myc-DDK
Symbol:	CCDC169
Synonyms:	C13orf38
Mammalian Cell Selection:	Neomycin
Vector:	pCMV6-Entry (PS100001)
E. coli Selection:	Kanamycin (25 ug/mL)
ORF Nucleotide Sequence:	>RC227796 representing NM_001144981 Red=Cloning site Blue=ORF Green=Tags(s)

TTTTGTAATACGACTCACTATAGGGCGGCCGGAATTCGTCGACTGGATCCGGTACCGAGGAGATCTGCC  
GCC**CGATCGCC**

ATGAAGGAAGAGAGAACTACAACCTTCGACGGTGTGAGCACCAACCGCCTGAAACAGCAGTTGCTGGAAG  
AAGTCCGCAAGAAGGATGCAGTGCAACTCTCAATATTTGAACTAAGACACAAGATTACGGAAGTGGAAAGC  
CAAACCAATACTGACAATGAAGGTAGTGAATGGAAAACCGTTATGAGACACAACCTGAATTAATGAT  
GAACTAGAAAAGCAAATGTTTATCTCAAGGAGAAAGTGGAAAAATCCATGGAACTCTTCAGATAGAC  
TATCTTCTATTCGTGTCTATGAACGAATGCCAGTGGAAATCCTTAAACACATTACTTAAACAGCTAGAAGA  
AGAAAAGAAGACTCTTGAAAGTCAAGTGAATACTATGCCTTAACTGGAAACAAGAATCAAGGCTTAC  
CAGAAATCAACAATGAACGCCGTACATACCTAGCTGAAATGTCTCAGGTTCTGGTTTACATCAAGTTT  
CTAAAAGGCAACAGGTGGATCAACTGCCTAGGATGCAAGAGAATCTAGTAAAAGTGGAAAGATATAATCC  
AGCTAAGCAGAAGACAGTGAGTGCCAAGAGAGGACCAGTAAAAAGATTACAAGACCAACCATCTTCCA  
GAACTCCATCCA

**ACGCGT**ACGCGGCCGCTCGAGCAGAACTCATCTCAGAAGAGGATCTGGCAGCAAATGATATCTGGATT  
ACAAGGATGACGACGATAAGGTTTAA



[View online »](#)

**Protein Sequence:** >RC227796 representing NM\_001144981  
Red=Cloning site Green=Tags(s)

MKEERNYNFDGVSTNRLKQQLLEEVRRKDAVQLSIFELRHKITELEAKLNTDNEGSEWKTRYETQLELND  
 ELEKQIVYLKEKVEKIHGNSSDRLSSIRVYERPVEESLNTLLKQLEEEKTLESQVKYYALKLEQESKAY  
 QKINNERRTYLAEMSQGSGLHQVSKRQQVDQLPRMQENLVKTGRYNPAKQKTVSAKRGPVKKITRPNHLP  
 ELHP

TRTRPLEQKLISEEDLAANDILDYKDDDDKV

**Chromatograms:** [https://cdn.origene.com/chromatograms/mk8037\\_g04.zip](https://cdn.origene.com/chromatograms/mk8037_g04.zip)

**Restriction Sites:** SgfI-MluI

**Cloning Scheme:**



**ACCN:** NM\_001144981

**ORF Size:** 642 bp

**OTI Disclaimer:** The molecular sequence of this clone aligns with the gene accession number as a point of reference only. However, individual transcript sequences of the same gene can differ through naturally occurring variations (e.g. polymorphisms), each with its own valid existence. This clone is substantially in agreement with the reference, but a complete review of all prevailing variants is recommended prior to use. [More info](#)

**OTI Annotation:** This clone was engineered to express the complete ORF with an expression tag. Expression varies depending on the nature of the gene.

**Components:** The ORF clone is ion-exchange column purified and shipped in a 2D barcoded Matrix tube containing 10ug of transfection-ready, dried plasmid DNA (reconstitute with 100 ul of water).

**Reconstitution Method:**

1. Centrifuge at 5,000xg for 5min.
2. Carefully open the tube and add 100ul of sterile water to dissolve the DNA.
3. Close the tube and incubate for 10 minutes at room temperature.
4. Briefly vortex the tube and then do a quick spin (less than 5000xg) to concentrate the liquid at the bottom.
5. Store the suspended plasmid at -20°C. The DNA is stable for at least one year from date of shipping when stored at -20°C.

**RefSeq:** [NM\\_001144981.3](#)

**RefSeq ORF:** 645 bp

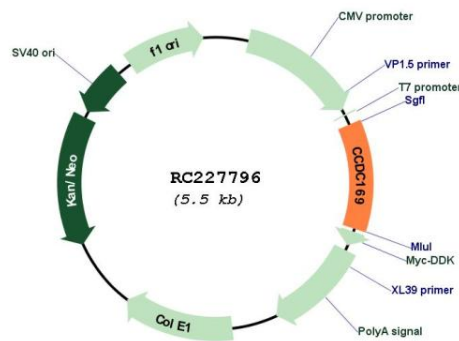
**Locus ID:** 728591

**UniProt ID:** [A6NNP5](#)

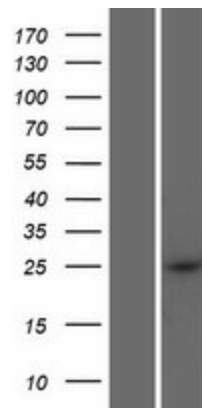
**Cytogenetics:** 13q13.3

**MW:** 25.1 kDa

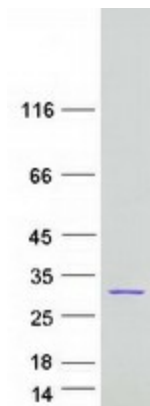
### Product images:



Circular map for RC227796



Western blot validation of overexpression lysate (Cat# [LY428621]) using anti-DDK antibody (Cat# [TA50011-100]). Left: Cell lysates from untransfected HEK293T cells; Right: Cell lysates from HEK293T cells transfected with RC227796 using transfection reagent MegaTran 2.0 (Cat# [TT210002]).



Coomassie blue staining of purified CCDC169 protein (Cat# [TP327796]). The protein was produced from HEK293T cells transfected with CCDC169 cDNA clone (Cat# RC227796) using MegaTran 2.0 (Cat# [TT210002]).