

Product datasheet for **RC227792**

PHF22 (INTS12) (NM_001142471) Human Tagged ORF Clone

Product data:

Product Type:	Expression Plasmids
Product Name:	PHF22 (INTS12) (NM_001142471) Human Tagged ORF Clone
Tag:	Myc-DDK
Symbol:	PHF22
Synonyms:	INT12; PHF22; SBB122
Mammalian Cell Selection:	Neomycin
Vector:	pCMV6-Entry (PS100001)
E. coli Selection:	Kanamycin (25 ug/mL)



[View online »](#)

ORF Nucleotide Sequence:

>RC227792 ORF sequence
 Red=Cloning site Blue=ORF Green=Tags(s)

TTTTGTAATACGACTCACTATAGGGCGGCCGGAATTCGTCGACTGGATCCGGTACCGAGGAGATCTGCC
 GCC**GCGATCGCC**

ATGGCTGCTACTGTGAACCTGGAACCTGATCCATTTTTTTGAAAGCACTAGTTTCTTGCAATCAAAGA
 GTAAGATTCTGCTGAAAAGCTAAAAGCACTGCTTGATGAATCTTTGGCTCGGGCATTGATTCCAGTTA
 CCGTCCATCTCAAAGGATGTGGAGCCACCCAAAATTTCAAGCACAAAAACATTTCCATTAAGCAAGAG
 CCCAAAATATCATCCAGTCTTCTTCTGGTAATAATAATGGCAAGGTCTCACAAGTAAAAGGTAAGA
 AGGAAGCTGAAAAGAGACCTGCTGATAAAATGAAATCAGACATCACTGAAGGAGTTGATATTCAAAGAA
 ACCTAGATTGGAGAAACAGAAACACAGTCATCTCCATTACTGTCAAAGTAGCAAGGATTTACCTATG
 GCTGACCTTTCCAGTTTGGAGAGACCAGTGTGATGATTTTCCATGGAGATGGGATTGGCCTGCGTTG
 TTTGTAGGCAAAATGATGGTGGCATCTGGCAATCAATTAGTAGAATGTCAGGAGTGCATAATCTCTACCA
 CCGAGATTGTCATAAACCCAGGTGACAGACAAGGAAGCGAATGACCCTCGCCTGGTGTGGTATTGTGCC
 CGATGTACCAGACAAATGAAAAGATGGCTCAAAAACTCAGAAACCACCGCAGAAACCAGCCCCTGCAG
 TTGTTTCTGTAACCTCCAGCTGTCAAAGATCCATTGGTTAAGAAACCAGAACTAAACTGAAACAAGAGAC
 AACTTTTCTAGCGTTTAAAGAGAACAAGTCAAGACATCCACAGTTATTTAGGAAATCTTCTAGTGCC
 AGCGTTTCTCTGTCAGTAACTAGTGGCTTAACTGGATGGGACGCTTTTGCAGCCAAAACCTCCTCTGCTG
 GTCCTTCAACAGCAAAATGAGTTCAACAACACAAAACAATACTGGGAAACCTGCTACTTCGTCAGCTAA
 CCAGAAACCTGTGGGTTTACTGGTCTGGCAACATCATCAAAGGTGGAATAGGTTCCAAAATAGGTTCC
 AATAACAGCACTACGCCACTGTACCTTAAAACCACCTCCACCTAACCTTGGGTAAGTTCAGGAAAG
 GTCGCTCAGTTAGTTGTGACAATGTCAGCAAAGTAGGTTCTTAGTCCAAGTAGTTTAGTTCCAGGAAG
 CAGCAGCCAACTAAGTGGGAATGAAAATAGTGGAAACATCAGGACCTAGTGGAAAGTACTACCAGCAAACT
 ACTTCAGAAATCCAGCAGCTCTCCCTCAGCATCCCTTAAAGGCCCAACTTACAAGAATCACAGCTCAATG
 CTATGAAGCGATTACAGATGGTCAAGAAGAAAGCTGCCAAAAGAACTCAAGAAG

ACGCGTACGCGGCCGCTCGAGCAGAACTCATCTCAGAAGAGGATCTGGCAGCAATGATATCCTGGATT
 ACAAGGATGACGACGATAAGGTTTAA

Protein Sequence:

>RC227792 protein sequence
 Red=Cloning site Green=Tags(s)

MAATVNLELDPIFLKALGFLHSKSKDSAEKLLKALLDESLARGIDSSYRPSQKDVPEPKISSTKNISIKQE
 PKISSSLPSGNNNGKVL TTEKVKKEAEKRPADKMKSDITEGVDIPKKPRLEKPEQSSPITVQSSKDLPM
 ADLSSFEETSADDFAMEMGLACVVCRQMMVASGNQLVECQECHLYHRDCHKPQVTDKEANDPRLVWYCA
 RCTRQMKRMAQKTQKPPQKPAVAVSVTPAVKDPLVKKPETKQKQETTFLLAFKRTEVKTSTVISGNSSSA
 SVSSSVTSGLTGWAFAAKTSSAGPSTAKLSSTTQNNTKPATSSANQKPVGLTGLATSSKGGIGSKIGS
 NNSTTPTVPLKPPPPLTLGKTGLSRSVSCDNVSKVGLPSPSSLVPGSSSQLSGNNGNSGTSGPSSTTSTK
 TSESSSPSASLKGPTSQESQLNAMKRLQMVKKAAQKLLK

TRTRPLEQKLISEEDLAANDILDYKDDDDKV

Chromatograms:

https://cdn.origene.com/chromatograms/mk6574_h04.zip

Restriction Sites:

Sgfl-Mlul

Cloning Scheme:



ACCN: NM_001142471

ORF Size: 1386 bp

OTI Disclaimer: The molecular sequence of this clone aligns with the gene accession number as a point of reference only. However, individual transcript sequences of the same gene can differ through naturally occurring variations (e.g. polymorphisms), each with its own valid existence. This clone is substantially in agreement with the reference, but a complete review of all prevailing variants is recommended prior to use. [More info](#)

OTI Annotation: This clone was engineered to express the complete ORF with an expression tag. Expression varies depending on the nature of the gene.

Components: The ORF clone is ion-exchange column purified and shipped in a 2D barcoded Matrix tube containing 10ug of transfection-ready, dried plasmid DNA (reconstitute with 100 ul of water).

- Reconstitution Method:
1. Centrifuge at 5,000xg for 5min.
 2. Carefully open the tube and add 100ul of sterile water to dissolve the DNA.
 3. Close the tube and incubate for 10 minutes at room temperature.
 4. Briefly vortex the tube and then do a quick spin (less than 5000xg) to concentrate the liquid at the bottom.
 5. Store the suspended plasmid at -20°C. The DNA is stable for at least one year from date of shipping when stored at -20°C.

RefSeq: [NM_001142471.1](#), [NP_001135943.1](#)

RefSeq Size: 1606 bp

RefSeq ORF: 1389 bp

Locus ID: 57117

UniProt ID: [Q96CB8](#)

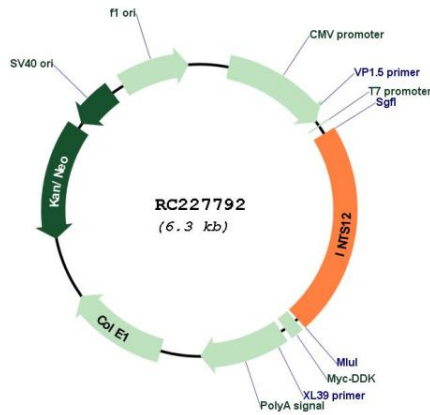
Cytogenetics: 4q24

Protein Families: Druggable Genome, Transcription Factors

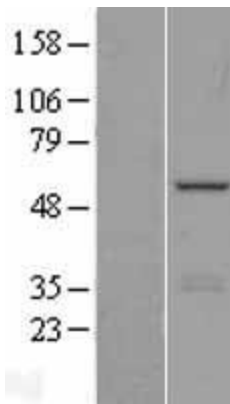
MW: 48.8 kDa

Gene Summary: INTS12 is a subunit of the Integrator complex, which associates with the C-terminal domain of RNA polymerase II large subunit (POLR2A; MIM 180660) and mediates 3-prime end processing of small nuclear RNAs U1 (RNU1; MIM 180680) and U2 (RNU2; MIM 180690) (Baillat et al., 2005 [PubMed 16239144]).[supplied by OMIM, Mar 2008]

Product images:



Circular map for RC227792



Western blot validation of overexpression lysate (Cat# [LY428117]) using anti-DDK antibody (Cat# [TA50011-100]). Left: Cell lysates from untransfected HEK293T cells; Right: Cell lysates from HEK293T cells transfected with RC227792 using transfection reagent MegaTran 2.0 (Cat# [TT210002]).