

Product datasheet for **RC227791**

ZFY (NM_001145275) Human Tagged ORF Clone

Product data:

Product Type:	Expression Plasmids
Product Name:	ZFY (NM_001145275) Human Tagged ORF Clone
Tag:	Myc-DDK
Symbol:	ZFY
Synonyms:	ZNF911
Vector:	pCMV6-Entry (PS100001)
E. coli Selection:	Kanamycin (25 ug/mL)
Cell Selection:	Neomycin



[View online »](#)

ORF Nucleotide
Sequence:

>RC227791 representing NM_001145275
Red=Cloning site Blue=ORF Green=Tags(s)

TTTTGTAATACGACTCACTATAGGGCGGCCGGGAATTCGTCGACTGGATCCGGTACCGAGGAGATCTGCC
GCC**CGCATCGCC**

ATGGATGGTGATCAGATTGTTGTGGAAATACAAGAAGCAGTTTTTGTCTAATATTGTGGATTCTGACA
TAACTGTGCATAACTTTGTTCTGATGACCCAGACTCAGTTGTAATCCAAGATGTTGTTGAAGATGTTGT
CATAGAGGAGGATGTTCACTGCTCAGATATCTTAGAAGAGGCAGATGTATCTGAAAATGTCATCATTCT
GAGCAAGTCTGGACTCAGATGTAAGTGAAGAAGTTCTTTACCACACTGCACAGTCCCAGATGATGTTT
TAGCTTCTGACATTACTCAACCTCAATGTCTATGCCAGAACATGTTTTAACGAGTGAATCCATGCATGT
GTGTGACATTGGACATGTTGAACATATGGTGCATGATAGTGTAGTGAAGCAGAAATCATTACTGATCCT
CTGACGAGTGACATAGTTTCAGAAGAAGTATTGGTAGCAGACTGTGCCCTGAAGCAGTCATAGATGCCA
GCGGGATCTCAGTGGACCAGCAAGATAATGACAAAGCCAGCTGTGAGGACTACCTAATGATTTTCGTTGGA
TGATGCTGGCAAAATAGAACATGATGGTCCACTGGAGTGACCATCGATGCAGAATCAGAAATGGATCCT
TGTAAGTGGATAGCACTTGTCCGAAGTCATCAAGGTGTACATTTTTAAAGCTGACCCTGGAGAAGATG
ACTTAGGTGGAAGTGTAGACATTGTGGAGAGTGAACCTGAAAATGATCATGGAGTTGAACTACTTGATCA
GAACAGCAGTATTCGTGTTCCAGGGAAAAGATGGTTTATGACTGTCAATGACTCTCAACAAGAAGAT
GAAGATTTAAGTAATAATTCTGATGGAATTGAAAACCGGAATGGCACTGCAAGTGCCTCTTGCACATAG
ATGAGTCTGCTGGCCTTGGCAGACTGGCTAAACAGAAACCAAGAAAAGAGAAGACCTGATCCAGGCA
GTACCAACAGCAATAATTATGGCCCTGATGGTCACTTTGACTGTCTATCCTTGCATGATTTGTGGG
AAGAAGTTTAAGTCGAGGGGTTTTTTGAAAAGACACATGAAAACCATCCTGAACACCTTGCCAAGAAGA
AGTACCCTGTACTGACTGTGATTACACTACCAATAAGAAGATAAGTTTACATAACCACCTGGAGAGCCA
CAAGCTGACCAGCAAGGCAGAGAAGGCCATTGAATGTGATGAGTGTGGGAAGCATTTTTCTCATGCAGGG
GCTTTGTTTACTCACAAAATGGTGCATAAGGAAAAGGGGCAACAAAATGCACAAGTGTAAATTCTGTG
AATATGAGACAGCTGAACAGGGTTATTGAATCGCCACCTCTTGGCAGTCCACAGCAAGAAGTTTCTCTCA
TATTTGTGTGGAGTGTGGTAAAGGTTTCCGACACCCGTCGGAAGTGAAGAACACATGCGAATCCATACC
GGCGAGAAGCCATACCAATGCCAGTACTGTGAATATAGGTCTGCAGACTCTTCTAACTTGAAAACACATA
TAAAAACAAAGCATAGTAAAGAGATGCCATTCAAGTGTGACATTTGTCTTCTGACTTTCTCAGATACCA
AGAAGTGCAGCAACATACTTTGTCCACCAAGAAAGCAAAACACATCAGTGTTCATTGCGACCACAAG
AGTTCAAACCTCAAGTATTTGAAACGACATGTAATTTTCAGTTCATACGAAAGACTATCCTCATAAGTGTG
AGATGTGCGAGAAAGGCTTTACAGGCCTTCAGAACTTAAAGAACATGTGGCTGTCCACAAGGTAAAAA
AATGCACCAATGTAGACATTGTGACTTTAAGATTGCAGACCCATTTGTTCTAAGTCGCCATATTCTCTCA
GTTACACAAAGGATCTTCCATTTAGGTGTAAGAGATGTAGAAAGGGATTTAGGCAACAAAATGAGCTTA
AAAAGCATATGAAGACACACAGTGGCAGGAAAGTATATCAGTGTGAGTACTGTGAGTATAGCACTACAGA
TGCTCAGGCTTTAAACGGCACGTTATTTCCATTCATACAAAAGACTATCCTCATCGGTGTGAGTACTGC
AAGAAAGGCTTCCGAAGACCTTCAGAAAAGAACCAGCACATAATGAGACACCATAAAGAAGTTGGTCTGC
CC

ACGCGTACGCGGCCGCTCGAGCAGAACTCATCTCAGAAGAGGATCTGGCAGCAAATGATATCCTGGATT
ACAAGGATGACGACGATAAGGTTTAA

Protein Sequence: >RC227791 representing NM_001145275
 Red=Cloning site Green=Tags(s)

MDGDQIVVEIQEAVFVSNIVSDITVHNFVPPDDPSVVIQDVVEDVVEEDVQCSDILEEADVSENVIIIP
 EQVLDSDVTEEVSLPHCTVPDDVLASDITSTSMSPPEHVLTSSEMHVCDIGHVEHMHVHDSVVEAEIITDP
 LTSDIVSEEVLVADCAPEAVIDASGISVDQDNDKASCEDYLMISLDDAGKIEHDGSTGVTIDAESEMDP
 CKVDSTCPEVIKVIYIFKADPGEDDLGGTVDIVSEPENDHGVLELLDQNSSIRVPREKMVYMTVNDSSQED
 EDLSNNSDGIENRGTASALLHIDESAGLGRLAKQKPKKKRRPDSRQYQT AIIIGPDGHPLTVYPCMICG
 KKFKSRGFLKRHMKNHPEHLAKKKYHCTDCDYTTNKKISLHNHLESHKLTSKAEKAI ECDECGKHF SHAG
 ALFTHKMVHKEKGANKMHKCKFCEYETAEGQLLRHLLAVHKNFPHICVECGKGRHPSSELRKHMRIHT
 GEKPYQCQYCEYRSADSSNLKTHIKTKHSEMPFKCDICLLTFSDTKEVQQHTLVHVESKTHQCLHCDHK
 SSNSSDLKRHVIVHTKDYPHKCEMCEKGFHRPSELKKHVAVHKGKMMHQCRHCFKIADPFVLSRHILS
 VHTKDL PFRCKRCRKGFRQNELKHKMKT HSGRKYVQCEYCEYSTTDASGFKRHVISIHTKDYPHRCEY
 KKGFRPSEKNQHIMRHHKEVGLP

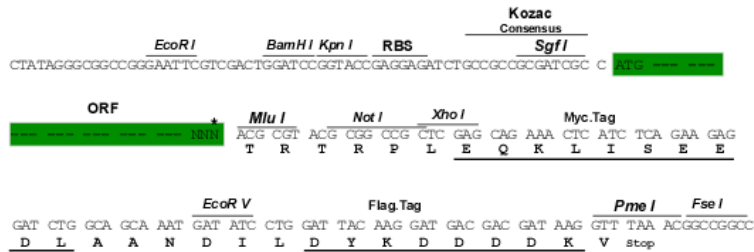
TRTRPLEQKLI SEEDLAANDILDYKDDDDKV

Restriction Sites:

Sgfl-MluI

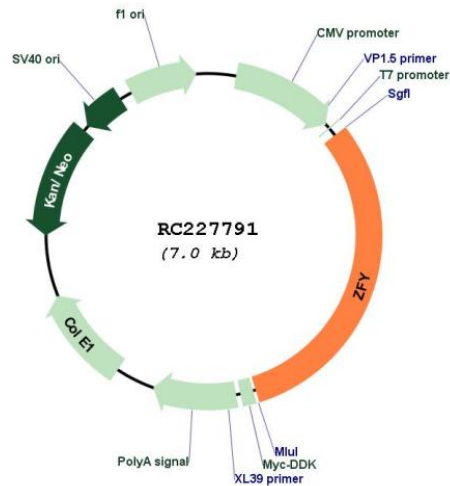
Cloning Scheme:

Cloning sites used for ORF Shuttling:



* The last codon before the Stop codon of the ORF

Plasmid Map:



ACCN: NM_001145275

ORF Size: 2172 bp

OTI Disclaimer: The molecular sequence of this clone aligns with the gene accession number as a point of reference only. However, individual transcript sequences of the same gene can differ through naturally occurring variations (e.g. polymorphisms), each with its own valid existence. This clone is substantially in agreement with the reference, but a complete review of all prevailing variants is recommended prior to use. [More info](#)

OTI Annotation: This clone was engineered to express the complete ORF with an expression tag. Expression varies depending on the nature of the gene.

Components: The ORF clone is ion-exchange column purified and shipped in a 2D barcoded Matrix tube containing 10ug of transfection-ready, dried plasmid DNA (reconstitute with 100 ul of water).

Reconstitution Method:

1. Centrifuge at 5,000xg for 5min.
2. Carefully open the tube and add 100ul of sterile water to dissolve the DNA.
3. Close the tube and incubate for 10 minutes at room temperature.
4. Briefly vortex the tube and then do a quick spin (less than 5000xg) to concentrate the liquid at the bottom.
5. Store the suspended plasmid at -20°C. The DNA is stable for at least one year from date of shipping when stored at -20°C.

RefSeq: [NM_001145275.2](#)

RefSeq ORF: 2175 bp

Locus ID: 7544

UniProt ID: [P08048](#)

Cytogenetics:	Yp11.2
Protein Families:	Transcription Factors
MW:	82 kDa
Gene Summary:	This gene encodes a zinc finger-containing protein that may function as a transcription factor. This gene was once a candidate gene for the testis-determining factor (TDF) and was erroneously referred to as TDF. [provided by RefSeq, Jul 2008]