

## Product datasheet for **RC227772**

### TRIP15 (COPS2) (NM\_001143887) Human Tagged ORF Clone

#### Product data:

Product Type:	Expression Plasmids
Product Name:	TRIP15 (COPS2) (NM_001143887) Human Tagged ORF Clone
Tag:	Myc-DDK
Symbol:	TRIP15
Synonyms:	ALIEN; CSN2; SGN2; TRIP15
Mammalian Cell Selection:	Neomycin
Vector:	pCMV6-Entry (PS100001)
E. coli Selection:	Kanamycin (25 ug/mL)



[View online »](#)

**ORF Nucleotide Sequence:**

>RC227772 representing NM\_001143887  
 Red=Cloning site Blue=ORF Green=Tags(s)

TTTTGTAATACGACTCACTATAGGGCGGCCGGAATTCGTCGACTGGATCCGGTACCGAGGAGATCTGCC  
 GCC**GCGATCGCC**

ATGTCTGACATGGAGGATGATTTTCATGTGCGATGATGAGGAGGACTACGACCTGGAATACTCTGAAGATA  
 GTAACCTCCGAGCCAAATGTGGATTTGAAAAATCAGTACTATAATTCCAAAGCATTAAAAGAAGATGACCC  
 AAAAGCGCATTAAAGCAGTTTCCAAAAGTTTTGGAACCTGAAGGTGAAAAAGGAGAATGGGGATTTAAA  
 GCACTGAAACAAATGATTAAGATTAAGTTCAAGTTGACAACTTTCCAGAAATGATGAATAGATATAAGC  
 AGCTATTGACCTATATTCGGAGTGCAGTACAAGAAATTTCTGAAAAATCCATTAATTCTATTCTTGA  
 TTATATCTCTACTTCTAAACAGAATTCTGATTTTTTATGTCAGATGGATTTACTGCAGGAATTCTATGAA  
 ACAACTGGAAGCTTTGAAAGATGCTAAGAATGATAGACTGTGGTTAAGACAAACACAAAGCTTGGAA  
 AATTATATTTAGAACGAGAGGAATATGGAAAGCTTCAAAAAATTTACGCCAGTTACATCAGTCGTGCCA  
 GACTGATGATGGAGAAGATGATCTGAAAAAGGTACACAGTTATTAGAAATATATGCTTTGGAAATTCAA  
 ATGTACACAGCACAGAAAAATACAAAAACTTAAAGCACTCTATGAACAGTCACCTCACATCAAGTCTG  
 CCATCCCTCATCCACTGATTATGGGAGTTATCAGAGAATGTGGTGGTAAAATGCCTTGAGGGAAGGTGA  
 ATTTGAAAAGGCACACTGATTTTTTTGAAAGCTTCAAGAATATGATGAATCTGGAAGTCCAAGACGA  
 ACCACTTGCTTAAAAATTTGGTCTTAGCAAAATGCTTATGAAATCGGGAATAATCCATTTGACTCAC  
 AGGAGGCCAAGCCGTACAAAAATGATCCAGAAATTTAGCAATGACGAATTTAGTAAAGTCCATACAGAA  
 TAATGACATCACTGAATTTGAAAAGATTCTAAAAACAAATCACAGCAACATCATGGATGATCCTTTCATA  
 AGAGAACACATTGAAGAGCTTTTGCGAACATCAGAACAAGTGTATAAAATTAATTAAGCCTTACA  
 CAAGAATACATATTCCTTTTATTCTAAGGAGTTAAACATAGATGTAGCTGATGTGGAGACTTGTCTGGT  
 GCAGTGCATATTGGATAAACAATTCATGGCCGAATTGATCAAGTCAACCAACTCCTTGAACCTGGATCAT  
 CAGAAGAGGGTGGTGCACGATATACTGCACTAGATAAATGGACCAACCAACTAAATTCTCTCAACCAGG  
 CTGTAGTCAGTAACTGGCT

**ACGCGT**ACGCGGCCGCTCGAGCAGAACTCATCTCAGAAGAGGATCTGGCAGCAATGATATCCTGGATT  
 ACAAGGATGACGACGATAAGGTTTAA

**Protein Sequence:**

>RC227772 representing NM\_001143887  
 Red=Cloning site Green=Tags(s)

MSDMEDDFMCDDEEDYDLEYSNPNVDLENQYNSKALKEDDPKAALSSFQKVLLEGEKEGEWGFK  
 ALKQMIKINFLKTNFPEMMNRYKQLLTYIRSAVTRNYSEKSINSILDYISTSKQNSDFLCQMDLLQEFYE  
 TTLEALKDAKNDRLWFKTNTKLGKLYLEREEYGKLGKILRQLHQSCQTDGDDLLKKGTTLLLEIYALEIQ  
 MYTAQKNNKLLKALYEQSLHIKSAIPHPLIMGVIRECGGKMHLEGEFEKAHTDFEAFKNYDESGSPRR  
 TTCLKYLVLANMLMKSINPFDSEAKPKNDPEILAMTNLVSAYQNNDITEFEKILKTNHSNIMDDPFI  
 REHIEELLRNIRTQVLKLIKPYTRIHIPFISKELNIDVADVESLLVQCILDNTIHGRIDQVNLLELDH  
 QKRGGARYTALDKWTNQLNSLNQAVVSKLA

**TR**TRPLEQKLISEEDLAANDILDYKDDDDKV

**Chromatograms:**

[https://cdn.origene.com/chromatograms/mk8060\\_h02.zip](https://cdn.origene.com/chromatograms/mk8060_h02.zip)

**Restriction Sites:**

Sgfl-Mlul

**Cloning Scheme:**


**ACCN:** NM\_001143887

**ORF Size:** 1350 bp

**OTI Disclaimer:** The molecular sequence of this clone aligns with the gene accession number as a point of reference only. However, individual transcript sequences of the same gene can differ through naturally occurring variations (e.g. polymorphisms), each with its own valid existence. This clone is substantially in agreement with the reference, but a complete review of all prevailing variants is recommended prior to use. [More info](#)

**OTI Annotation:** This clone was engineered to express the complete ORF with an expression tag. Expression varies depending on the nature of the gene.

**Components:** The ORF clone is ion-exchange column purified and shipped in a 2D barcoded Matrix tube containing 10ug of transfection-ready, dried plasmid DNA (reconstitute with 100 ul of water).

**Reconstitution Method:**

1. Centrifuge at 5,000xg for 5min.
2. Carefully open the tube and add 100ul of sterile water to dissolve the DNA.
3. Close the tube and incubate for 10 minutes at room temperature.
4. Briefly vortex the tube and then do a quick spin (less than 5000xg) to concentrate the liquid at the bottom.
5. Store the suspended plasmid at -20°C. The DNA is stable for at least one year from date of shipping when stored at -20°C.

**RefSeq:** [NM\\_001143887.2](#)

**RefSeq ORF:** 1353 bp

**Locus ID:** 9318

**UniProt ID:** [P61201](#)

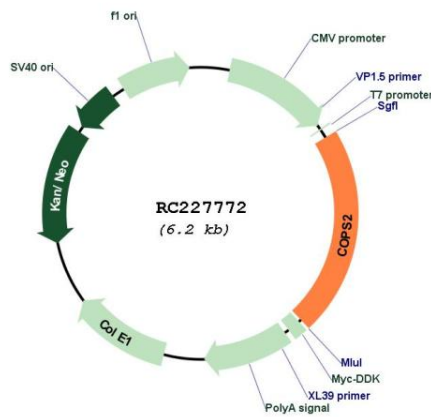
**Cytogenetics:** 15q21.1

**Protein Families:** Druggable Genome, Transcription Factors

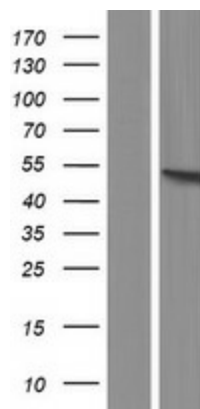
**MW:** 52.2 kDa

**Gene Summary:** Essential component of the COP9 signalosome complex (CSN), a complex involved in various cellular and developmental processes. The CSN complex is an essential regulator of the ubiquitin (Ubl) conjugation pathway by mediating the deneddylation of the cullin subunits of SCF-type E3 ligase complexes, leading to decrease the Ubl ligase activity of SCF-type complexes such as SCF, CSA or DDB2. The complex is also involved in phosphorylation of p53/TP53, c-jun/JUN, IκappaBα/NFKBIA, ITPK1 and IRF8/ICSBP, possibly via its association with CK2 and PKD kinases. CSN-dependent phosphorylation of TP53 and JUN promotes and protects degradation by the Ubl system, respectively. Involved in early stage of neuronal differentiation via its interaction with NIF3L1.[UniProtKB/Swiss-Prot Function]

**Product images:**



Circular map for RC227772



Western blot validation of overexpression lysate (Cat# [LY428394]) using anti-DDK antibody (Cat# [TA50011-100]). Left: Cell lysates from untransfected HEK293T cells; Right: Cell lysates from HEK293T cells transfected with RC227772 using transfection reagent MegaTran 2.0 (Cat# [TT210002]).