

Product datasheet for **RC227771**

ANTXR2 (NM_001145794) Human Tagged ORF Clone

Product data:

Product Type:	Expression Plasmids
Product Name:	ANTXR2 (NM_001145794) Human Tagged ORF Clone
Tag:	Myc-DDK
Symbol:	ANTXR2
Synonyms:	CMG-2; CMG2; HFS; ISH; JHF
Mammalian Cell Selection:	Neomycin
Vector:	pCMV6-Entry (PS100001)
E. coli Selection:	Kanamycin (25 ug/mL)



[View online »](#)

ORF Nucleotide Sequence:

>RC227771 representing NM_001145794
 Red=Cloning site Blue=ORF Green=Tags(s)

TTTTGTAATACGACTCACTATAGGGCGGCCGGAATTCGTCGACTGGATCCGGTACCGAGGAGATCTGCC
 GCC**CGCATCGCC**

ATGGTGGCGGAGCGGTCCCCGGCCCGCAGCCCCGGGAGCTGGCTGTTCCCGGGCTGTGGCTGTTGGTGC
 TCAGCGGTCCCGGGGGCTGCTGCGCGCCAGGAGCAGCCCTCCTGCAGAAGAGCCTTTGATCTCTACTT
 CGTCTTGACAAGTCTGGGAGTGTGGCAAATAACTGGATTGAAATTTATAATTCGTACAGCAACTTGCG
 GAGAGATTTGTGAGCCCTGAAATGAGATTATCTTTCATTGTGTTTTCTTCTCAAGCAACTATTATTTTGC
 CATTAAGTGGAGACAGAGGCAAAATCAGTAAAGGCTTGGAGGATTTAAAACGTGTAGTCCAGTAGGAGA
 GACATATATCCATGAAGGACTAAAGCTAGCGAATGAACAAATTCAGAAAGCAGGAGGCTTAAAACTCC
 AGTATCATAATTGCTCTGACAGATGGCAAGTTGGACGGTCTGGTCCATCATATGCAGAGAAAGAGGCAA
 AGATATCCAGGTCCTTGGGCTAGTGTATTATTGTGTTGGTGCCTTGATTTTGAACAAGCACAGCTTGA
 AAGAATTGCTGATTCCAAGGAGCAAGTTTTCCCTGTCAAAGGTGGATTTCAAGGCTCTAAAGGAATAATT
 AATTCTATACTAGCTCAGTCATGTACTGAAATCCTAGAATTGCAGCCCTCAAGTGTCTGTGTGGGGGAGG
 AATTTTCAGATTGTCTTAAGTGAAGAGGATTCATGCTGGCAGTCGGAATGGCAGTGTCTCTGCACTTA
 CACTGTAATGAAACATATACAACGAGTGTAAAACAGTAAGTGTACAGCTTAATTCTATGCTTTGTCTT
 GCACCTATCCTGAATAAAGCTGGAGAACTCTTGATGTTTCAGTGAAGTAAATGGAGGAAAATCTGTCA
 TTTTCAGGATCATAATTGTACAGCCACAGAATGTTCTAACGGATCGCAGCCATCATTGTTATTTTGGT
 GTTACTGCTACTCTGGGATCGGTTTGTGTTGGTGGTTTTGGCCCTTTGCTGCAAAGTGGTTATTAAG
 GATCCTCCACCACCACCCGCCCTGCACAAAAGAGGAGGAAGAAGAACCCTTGCCTACTAAAAAGTGGC
 CAACTGTGGATGCTTCTATTATGGTGGTTCGAGGGTTGGAGGAATTAAGAAGTGGAGGTTCTGTGGG
 TGATAAAGGATCTACTGAGGAAGGTGCAAGGCTAGAGAAAGCCAAAATGCTGTGGTGAAGATTCTGAA
 GAAACAGAGGAACCCATCAGGCCTAGACCACCTGACCCAAACCCACACACCAGCCTCCTCAGACAAAAT
 GGTACACCCCAATTAAGGGTCGCTTGTGCTCTCTGGGCTTTGTTGAGGCGGCAGTATGACCGGGTTTC
 TTTGATGCGACCTCAGGAAGGAGATGAGGTTTGTATATGGGAATGATTGAGAAAGAGCTAACTGCT

ACGCGTACGCGGCCGCTCGAGCAGAACTCATCTCAGAAGAGGATCTGGCAGCAATGATATCTGGATT
 ACAAGGATGACGACGATAAGGTTTAA

Protein Sequence:

>RC227771 representing NM_001145794
 Red=Cloning site Green=Tags(s)

MVAERSPARSPGSWLPGLWLLVLSGPGLLRAQEQPSCRRAFDLYFVLDKSGSVANNWIEIYNFVQQLA
 ERFVSPERMRLSFIIVFSSQATIIILPLTGDRGKISKGLEDLKRVSPVGETYIHEGLKLANEQIQKAGGLKTS
 SIIIALTDGKLDGLVPSYAEKEAKISRLGASVYCVGVLDFEQAQLERIAADSKEQVFPVKGGFQALKGII
 NSILAQSCTEILELQPSSVYCVGEEFQIVLSGRGFMLGSRNGSVLCTYTVNETYTTSVKPVSVQLNSMLCP
 APILNKAGETLDVSVSFNGGKSVISGSLIVTATECSNGIAAIIIVILVLLLLLIGLMWVWPLCCKVVIK
 DPPPPPAPAPKEEEEEPLPTKKWPTVDASYGGRGVGGIKRMEVVRWGDKGSTEEGARLEKAKNAVVKIPE
 ETEEPIRPRPRPKPTHQPPQTKWYTPIKGRDLALWALLRRQYDRVSLMRPQEGDEVCIWECIEKELTA

TRTRPLEQKLISEEDLAANDILDYKDDDDKV

Chromatograms:

https://cdn.origene.com/chromatograms/mk8006_g11.zip

Restriction Sites:

Sgfl-Mlul

Cloning Scheme:


ACCN: NM_001145794

ORF Size: 1467 bp

OTI Disclaimer: Due to the inherent nature of this plasmid, standard methods to replicate additional amounts of DNA in E. coli are highly likely to result in mutations and/or rearrangements. Therefore, OriGene does not guarantee the capability to replicate this plasmid DNA. Additional amounts of DNA can be purchased from OriGene with batch-specific, full-sequence verification at a reduced cost. Please contact our customer care team at custsupport@origene.com or by calling 301.340.3188 option 3 for pricing and delivery.

The molecular sequence of this clone aligns with the gene accession number as a point of reference only. However, individual transcript sequences of the same gene can differ through naturally occurring variations (e.g. polymorphisms), each with its own valid existence. This clone is substantially in agreement with the reference, but a complete review of all prevailing variants is recommended prior to use. [More info](#)

OTI Annotation: This clone was engineered to express the complete ORF with an expression tag. Expression varies depending on the nature of the gene.

Components: The ORF clone is ion-exchange column purified and shipped in a 2D barcoded Matrix tube containing 10ug of transfection-ready, dried plasmid DNA (reconstitute with 100 ul of water).

- Reconstitution Method:**
1. Centrifuge at 5,000xg for 5min.
 2. Carefully open the tube and add 100ul of sterile water to dissolve the DNA.
 3. Close the tube and incubate for 10 minutes at room temperature.
 4. Briefly vortex the tube and then do a quick spin (less than 5000xg) to concentrate the liquid at the bottom.
 5. Store the suspended plasmid at -20°C. The DNA is stable for at least one year from date of shipping when stored at -20°C.

RefSeq: [NM_001145794.1](#), [NP_001139266.1](#)

RefSeq ORF: 1470 bp

Locus ID: 118429

UniProt ID: [P58335](#)

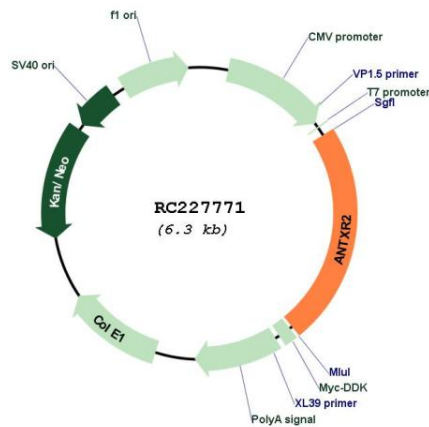
Cytogenetics: 4q21.21

Protein Families: Druggable Genome, Transmembrane

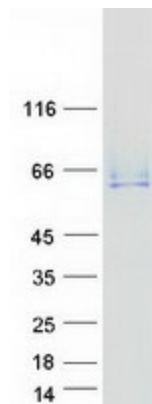
MW: 53.5 kDa

Gene Summary: This gene encodes a receptor for anthrax toxin. The protein binds to collagen IV and laminin, suggesting that it may be involved in extracellular matrix adhesion. Mutations in this gene cause juvenile hyaline fibromatosis and infantile systemic hyalinosis. Multiple transcript variants encoding different isoforms have been found for this gene. [provided by RefSeq, Mar 2009]

Product images:



Circular map for RC227771



Coomassie blue staining of purified ANTXR2 protein (Cat# [TP327771]). The protein was produced from HEK293T cells transfected with ANTXR2 cDNA clone (Cat# RC227771) using MegaTran 2.0 (Cat# [TT210002]).