

Product datasheet for RC227762

ALS2CR1 (NIF3L1) (NM_001136039) Human Tagged ORF Clone

Product data:

Product Type:	Expression Plasmids
Product Name:	ALS2CR1 (NIF3L1) (NM_001136039) Human Tagged ORF Clone
Tag:	Myc-DDK
Symbol:	ALS2CR1
Synonyms:	ALS2CR1; CALS-7; MDS015
Mammalian Cell Selection:	Neomycin
Vector:	pCMV6-Entry (PS100001)
E. coli Selection:	Kanamycin (25 ug/mL)
ORF Nucleotide Sequence:	>RC227762 ORF sequence Red=Cloning site Blue=ORF Green=Tags(s)

TTTTGTAATACGACTCACTATAGGGCGCCGGGAATTCGTCGACTGGATCCGGTACCGAGGAGATCTGCC
GCC**CGATCGCC**

ATGTTGTCATCTTGCCTACGCCAGTCCCCACGACAGTCCGGTTGTAGATTCCCTGATCTGCAATTCTT
CCCCTTCCTTCATGGATTTGAAGGCTCTCCTTTCTTCTTGAATGACTTTGCATCCCTCTCGTTTGTGA
GAGTTGGGACAATGTTGGATTACTGGTGAACCAAGCCACCACATACTGTAATACTCTTCTGACC
AATGACCTGACTGAGGAAGTGATGGAGGAGGTGCTGCAAAAGAAGGCAGACCTCATTCTCTCTACCATC
CGCCTATCTTCCGACCCATGAAGCGCATAACCTGGAACACATGGAAGGAGCGCCTGGTGATCCGGGCTCT
GGAGAACAGAGTCGGTATCTACTCTCCTCATAACAGCCTATGATGCTGCGCCCGAGGGCGTCAACAACTGG
TTGGCTAAAGGGCTTGGAGCTTGTACCTCCAGGCCATACATCCTTCCAAAGCTCCCAACTACCCTACAG
AGGGAAACCACCGAGTAGAATCAACGTTAACTACACCAAGACCTGGACAAAGTCATGTCTGCAGTGAA
AGGAATTGACGGTGTCTGTCACCTTTCTTCTGCTAGGACTGGTAATGAGGAACAAACACGGATTAAT
CTGAATTGACTCAGAAGGCTTTGATGCAGGTGGTAGATTTCTTTCCCGGAACAAACAACCTTTATCAGA
AGACGGAAATCTGTCACTGGAGAAGCCTTTGCTTCTACATACTGGAATGGGACGGTTATGCACACTGGA
TGAATCTGTCTCCCTGGCAACCATGATTGATCGAATAAAAAGACACCTAAAACATCTCATATTCGCTTA
GCCCTTGGGGTGGGAGAACCTTAGAGTCTCAAGTCAAAGTCTGGCCCTGTGTGCTGGTTCTGGGAGCA
GGTTCTGCAGGGTGTGAGGCTGACCTTTACCTCACAGGTGAGATGTCCCATCATGATACTTTGGATGC
TGCTTCCCAAGGAATAAATGTCATCCTCTGTGAACACAGCAACACTGAACGAGGCTTTCTTCTGACCTT
CGAGATATGCTGGATTCTCACTTGGAGAATAAGATAAATATTATCCTATCAGAGACTGACAGGGACCCCTC
TTCAGGTGGTA

ACGCGTACGCGGCCGCTCGAGCAGAAACTCATCTCAGAAGAGGATCTGGCAGCAATGATATCCTGGATT
ACAAGGATGACGACGATAAGGTTTAA



[View online »](#)

Protein Sequence: >RC227762 protein sequence
Red=Cloning site Green=Tags(s)

MLSSCVRPVPTTVRFVDSLICNSSRSFMDLKALLSSLNDFASLSFAESWDNVGLLVEPSPHTVNTLFLT
 NDLTEEVMEVLQKKADLILSYHPIIFRPMKRITWNTWKERLVIRALENRVGIYSPHTAYDAAPQGVNWW
 LAKGLGACTSRPIHPSKAPNYPTTEGNHRVEFNVTYQDLKVMASVKGIDGVSVTFSFARTGNEEQTRIN
 LNCTQKALMQVVDFLSRNKQLYQKTEILSLEKPLLLHTGMGRCLTLDSEVSLATMIDRIKRHLKLSHIRL
 ALGVGRITLESQVKVVALCAGSGSSVLQGVADLYLTGEMSHHDTLDAASQGINVILCEHSNTERGFLSDL
 RDMLDSHLENKINIILSETDRDPLQVV

TRTRPLEQKLISEEDLAANDILDYKDDDDKV

Chromatograms: https://cdn.origene.com/chromatograms/mk6408_b11.zip

Restriction Sites: SgfI-MluI

Cloning Scheme:



* The last codon before the Stop codon of the ORF

ACCN: NM_001136039

ORF Size: 1131 bp

OTI Disclaimer: The molecular sequence of this clone aligns with the gene accession number as a point of reference only. However, individual transcript sequences of the same gene can differ through naturally occurring variations (e.g. polymorphisms), each with its own valid existence. This clone is substantially in agreement with the reference, but a complete review of all prevailing variants is recommended prior to use. [More info](#)

OTI Annotation: This clone was engineered to express the complete ORF with an expression tag. Expression varies depending on the nature of the gene.

Components: The ORF clone is ion-exchange column purified and shipped in a 2D barcoded Matrix tube containing 10ug of transfection-ready, dried plasmid DNA (reconstitute with 100 ul of water).

Reconstitution Method:

1. Centrifuge at 5,000xg for 5min.
2. Carefully open the tube and add 100ul of sterile water to dissolve the DNA.
3. Close the tube and incubate for 10 minutes at room temperature.
4. Briefly vortex the tube and then do a quick spin (less than 5000xg) to concentrate the liquid at the bottom.
5. Store the suspended plasmid at -20°C. The DNA is stable for at least one year from date of shipping when stored at -20°C.

RefSeq: [NM_001136039.2](#), [NP_001129511.1](#)

RefSeq Size: 1497 bp

RefSeq ORF: 1134 bp

Locus ID: 60491

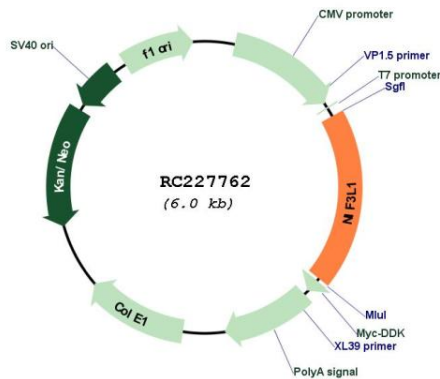
UniProt ID: [Q9GZT8](#)

Cytogenetics: 2q33.1

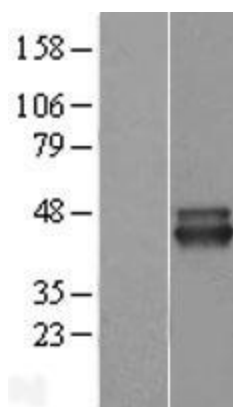
MW: 42 kDa

Gene Summary: May function as a transcriptional corepressor through its interaction with COPS2, negatively regulating the expression of genes involved in neuronal differentiation.[UniProtKB/Swiss-Prot Function]

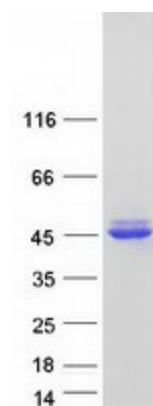
Product images:



Circular map for RC227762



Western blot validation of overexpression lysate (Cat# [LY428055]) using anti-DDK antibody (Cat# [TA50011-100]). Left: Cell lysates from untransfected HEK293T cells; Right: Cell lysates from HEK293T cells transfected with [RC227825] using transfection reagent MegaTran 2.0 (Cat# [TT210002]).



Coomassie blue staining of purified NIF3L1 protein (Cat# [TP327762]). The protein was produced from HEK293T cells transfected with NIF3L1 cDNA clone (Cat# RC227762) using MegaTran 2.0 (Cat# [TT210002]).