

Product datasheet for **RC227761**

ROBO1 (NM_001145845) Human Tagged ORF Clone

Product data:

Product Type: Expression Plasmids
Product Name: ROBO1 (NM_001145845) Human Tagged ORF Clone
Tag: Myc-DDK
Symbol: ROBO1
Synonyms: DUTT1; SAX3
Vector: pCMV6-Entry (PS100001)
E. coli Selection: Kanamycin (25 ug/mL)
Cell Selection: Neomycin
ORF Nucleotide Sequence: >RC227761 representing NM_001145845
Red=Cloning site Blue=ORF Green=Tags(s)

TTTTGTAATACGACTCACTATAGGGCGCCGGAATTCGTCGACTGGATCCGGTACCGAGGAGATCTGCC
GCC**GCGATCGCC**

ATGATTGCGGAGCCCGCTCACTTTTACCTGTTGGATTAATATGTCTCTGTTCAGGCTCCCGTCTTCGTC
AGGAAGATTTTCCACCTCGCATTGTTGAACACCCTTCAGACCTGATTGTCTCAAAGGAGAACCTGCAAC
TTTGAAGTCAAAGCTGAAGGCCGCCACACCCACTATTGAATGGTACAAAGGGGAGAGAGAGTGGAG
ACAGACAAAGATGACCCTCGCTCACACCGAATGTTGCTGCCGAGTGGATCTTTATTTTTCTTACGTATAG
TACATGGACGGAAAAGTAGACCTGATGAAGGAGTCTATGTCTGTGTAGCAAGGAATTACCTTGGAGAGGC
TGTGAGCCACAATGCATCGCTGGAAGTAGCCATACTTCGGGATGACTTCAGACAAAACCTTCGGATGTC
ATGTTTGTAGTAGGAGAGCCTGCAGTAATGGAATGCCAACCTCCACGAGGCCATCCTGAGCCACCATTT
CATGGAAGAAAGATGGCTCTCCACTGGATGATAAAGATGAAAGAATAACTATACGAGGAGGAAAGCTCAT
GATCACTTACACCCGTAAGAGTACGCTGGCAAATATGTTTGTGTTGGTACCAATATGGTTGGGAAACGT
GAGAGTGAAGTAGCCGAGCTGACTGTCTTAGAGAGACCATCATTTGTGAAGAGACCCAGTAACTTGGCAG
TAACTGTGGATGACAGTGCAGAATTTAAATGTGAGGCCCGAGGTGACCCTGTACCTACAGTACGATGGAG
GAAAGATGATGGAGAGCTGCCAAATCCAGATATGAAATCCGAGATGATACATACCTTGAAAATTAGGAAG
GTGACAGCTGGTACATGGGTTACACTTGTGTTGCAGAAAATATGGTGGGCAAGCTGAAGCATCTG
CTACTCTGACTGTTCAAGTTGGGTCTGAACCTCCACATTTTGTGTAACCCCGTACCAGGTTGTTGC
TTTGGGACGACTGTAACTTTTAGTGTGAAGCAACCGGAAATCCTCAACCAGCTATTTTCTGGAGGAGA
GAAGGGAGTCAGAATCTACTTTTCTCATATCAACCACCACAGTCATCCAGCCGATTTTCACTCTCCAGA
CTGGCGACCTCACAATTAATGTCCAGCGATCTGATGTTGGTTATTACATCTGCCAGACTTTAAATGT
TGCTGGAAGCATCATCACAAGGCATATTTGGAAGTTACAGATGTGATTGCAGATCGGCCTCCCCAGTT
ATTCGACAAGGTCTGTGAATCAGACTGTAGCCGTGGATGGCACTTTCGTCCTCAGCTGTGTGGCCACAG
GCAGTCCAGTGCCACCATTTCTGTGGAGAAAGGATGGAGTCCCTCGTTTCAACCAAGACTCTCGAATCAA
ACAGTTGGAGAATGGAGTACTGCAGATCCGATATGCTAAGCTGGGTGATACTGGTCCGTACACCTGCATT
GCATCAACCCCGAGTGGTGAAGCAACATGGAGTCTTACATTGAAGTTCAAGAATTTGGAGTTCCAGTTC



AGCCTCAAGACCTACTGACCCAAATTTAATCCCTAGTGCCCATCAAAACCTGAAGTGACAGATGTCAG
 CAGAAATACAGTCACATTATCGTGGCAACCAATTTGAATTCAGGAGCAACTCCAACATCTTATATTATA
 GAAGCCTTCAGCCATGCATCTGGTAGCAGCTGGCAGACCGTAGCAGAGAAATGTGAAAACAGAAACATCTG
 CCATTAAGGACTCAAACCTAATGCAATTTACCTTTTCTGTGAGGGCAGCTAATGCATATGGAATTAG
 TGATCCAAGCCAAATATCAGATCCAGTGAACACAAGATGTCTACCAACAAGTCAGGGGGTGGACCAC
 AAGCAGGTCCAGAGAGAGCTGGGAAATGCTGTTCTGCACCTCCACAACCCACCGTCTTTCTTCTCTCT
 CCATCGAAGTGCCTGGACAGTAGATCAACAGTCTCAGTATATACAAGGATATAAAATTTCTATCGGCC
 ATCTGGAGCCAACCACGGAGAATCAGACTGGTTAGTTTTTGAAGTGAGGACGCCAGCCAAAAACAGTGTG
 GTAATCCCTGATCTCAGAAAGGGAGTCAACTATGAAATTAAGGCTCGCCCTTTTTTAATGAATTTCAAG
 GAGCAGATAGTGAATCAAGTTTGC AAAAACCTGGAAGAAGCACCCAGTGCCCAACCCCAAGGTGTAAC
 TGTATCCAAGAATGATGGAAACGGAAGTCAATTTAGTTAGTTGGCAGCCACCTCCAGAAGACTCAA
 AATGGAATGGTCCAAGAGTATAAGTTTGGTGTCTGGCAATGAAACTCGATACCACATCAACAAAAACAG
 TGGATGGTTCCACCTTTCCGTGGTCATCCCTTTCTTGTCTGGAATCCGATACAGTGTGGAAGTGGC
 AGCCAGCACTGGGCTGGGTCTGGGTAAGAGTGAGCCTCAGTTCATCCAGCTGGATGCCATGGAAC
 CCTGTGTACCTGAGGACCAAGTCAACCTCGCTCAGCAGATTTAGATGTGGTGAAGCAGCCGGCCTTCA
 TAGCAGGTATTGGAGCAGCTGTTGGATCATCCTCATGGTCTTACAGCATCTGGCTTTATCGACACCGCAA
 GAAGAGAAACGGACTTACTAGTACCTACCGGGTATCAGAAAAGTAACTTACCAGAGAGGAGGCGAAGCT
 GTCAGCAGTGGAGGGAGGCTGGACTTCTCAACATCAGTGAACCTGCCGCGCAGCCATGGCTGGCAGACA
 CGTGGCCTAACTAGGCAACAACCAATGACTGCTCCATCAGCTGCTGCACGGCAGGCAATGGAACAG
 CGACAGCAACCTCACTACCTACAGTCGCCCAGGGCAGCCTACTCCTTACGCCACCACTCAGCTCATCCAG
 TCAAACCTCAGCAACAACATGAACAATGGCAGCGGGGACTCTGGCAGAAAGCACTGGAACCACTGGGAC
 AGCAGAAAACAAGAAGTGGCACCAGTTCAGTACAACATCGTGGAGCAAAACAAGCTGAACAAAGATTATCG
 AGCAAATGACACAGTTCCTCAACTATCCCATACAACCAATCATACGACCAGAACACAGGAGGATTCAG
 AACAGCTCAGACCGGGGAGTAGTACATCTGGGAGTCAGGGGCACAAGAAAGGGGCAAGAACACCCAAAGG
 TACCAAAACAGGGTGGCATGAACTGGGCAGACCTGCTTCTCCTCCCCAGCACATCCTCTCCACACAG
 CAATAGCGAAGAGTACAACATTTCTGTAGATGAAAGCTATGACCAAGAAATGCCATGTCCCGTGCCACCA
 GCAAGGATGTATTTGCAACAAGATGAATTAAGAAGAGGAGGAAGATGAACGAGGCCCACTCCCCCTGTT
 GGGGAGCAGCCTCTTCTCAGCTGCCGTGCTATAGCCATCAGTCCACTGCCACTCTGACTCCCTCCCC
 ACAGGAAGAACTCCAGCCATGTTACAGGATTGTCCAGAGGAGACTGGCCACATGCAGCACCAGCCCGAC
 AGGAGACGGCAGCCTGTGAGTCTCTCCACCACCACGGCGATCTCCCCTCCACATACCTATGGCTACA
 TTTTCAGGACCCCTGGTCTCAGATATGGATACGGATGCGCCAGAAGAGGAAGAAGCAAGCCGACATGGA
 GGTAGCCAAGATGCAAAACAGAAAGGCTTTTGTACGTGGGCTTGAGCAGACACCTGCCTCCAGTGTGGG
 GACCTGGAGAGCTCTGTACGGGGTCCATGATCAACGGCTGGGGCTCAGCCTCAGAGGAGGACAACATTT
 CCAGCGGACGCTCCAGTGTAGTTCTTCGGACGGCTCCTTTTTACTGATGCTGACTTTGCCAGGCAGT
 CGCAGCAGCGGCAGAGTATGCTGGTCTGAAAGTAGCACGACGGCAATGCAGGATGCTGCTGGCCGTCGA
 CATTTTCATGCGTCTCAGTGCCCTAGGCCACAAGTCCCGTGTCTACAGACAGCAACATGAGTGGCCCG
 TAATGCAGAAAACAGACCAGCAAGAACTGAAACACCAGCCAGGACATCTGCGCAGAGAAACCTACAC
 AGATGATCTTCCACCCTCTGTGCCGCCACCTGCTATAAAGTCACTACTGCCAATCCAAGACACAG
 CTGGAAGTACGACCTGTAGTGGTGCCAAAACCTCCTTCTATGGATGCAAGAACAGACAGATCATCAGACA
 GAAAAGGAAGCAGTTACAAGGGGAGAGAAGTGTGGATGGAAGACAGGTTGTTGACATGGCAACAATCC
 AGGTGATCCCAGAGAAGCACAGGAACAGCAAAATGACGGGAAAGGACGTGGAACAAAGGACGAAAACGA
 GACCTTCCACCAGCAAAGACTCATCTCATCCAAGAGGATATTCTACCTTATTGTAGACCTACTTTTCCAA
 CATCAAATAATCCAGAGATCCCAGTTCCTCAAGCTCAATGTCATCAAGAGGATCAGGAAGCAGACAAAG
 AGAACAAGCAAATGTAGGTCGAAGAAATATTGCAGAAATGCAGGTAATTTGGAGGATATGAAAGAGGAGAA
 GATAATAATGAAGAATTAGAGGAAACTGAAAGC

ACGCGTACGCGGCCGCTCGAGCAGAAACTCATCTCAGAAGAGGATCTGGCAGCAATGATATCCTGGATT
 ACAAGGATGACGACGATAAGGTTTAA

Protein Sequence: >RC227761 representing NM_001145845
 Red=Cloning site Green=Tags(s)

MIAEPAHFYLFGLICLCSGSRRLRQEDFPPRIVEHPSDLIVSKGEPATLNCKAEGRPPTPTIEWYKGGERVE
 TDKDDPRSHRMLLPSGSLFFLRIVHGRKSRPDEGVYVCVARNYLGEAVSHNASLEVAILRDDFRQNP
 SDV MVVVGEPAVMECQPPRGHPEPTISWKKDGSPLDDKDERITIRGGKLMITYTRKSDAGKYVCVGT
 NMVGER ESEVAELTVLERPSFVKRPSNLAVTVDDSAEFKCEARGDPVPTVRWRKDDGELPKSRYE
 IRDDHTLKIRK VTAGDMGSYTCVAENMVGKAEASATLTVQVGSEPPHFVVKPRDQVVALGRTVTF
 QCEATGNPQPAIFWRR EGSQNLFFSYQPQSSSRFSVSQTGDLTITNVQRSDVGYIQCQLNVAGSII
 TKAYLEVTDVADIADPPPV IRQGPVNQTVAVDGTFLSCVATGSPVPTILWRKDGVLVSTQDSRIK
 QLENGVLQIRYAKLGDTGRYTCI ASTPSGEATWSAYIEVQEFGVPVQPPRPTDPNLIPSAPSK
 PEVTDVSRNTVTLWQPNLNSGATPTSII EAFSHASGSSWQVAENVKTETSAIKGLKPNAIYL
 FLVRAANAYGISDPSQISDPVKTQDVLPTSQGV DH KQVQRELGNAVLHLHNPTVLSSSSIEV
 HWTVDQSQYIQGYKILYRPSGANHGESDWLVFEVRTPAKNSV VIPDLRKGVNYEIKARPF
 FNEFQGADSEIKFAKLEEAPSAPPQVTVSKNDGNGTAILVSWQPPPEDTQ NGMVQYKVVW
 CLGNETRYHINKTVDGSTLSVVIPLVPGIRYSVEVAASTGAGSGVKSEPFQIQLDAHGN
 PVPSPEDQVSLAQQISDVVKQPAFIAGIGAACWILMVFSIWLRYHRKRNGLTSTYAGIRKVTY
 QRGGEA VSSGGRPGLLNISEPAAPWLADTWPNTGNNHNDCSI SCCTAGNGNSDSLTTYSRPG
 QPTPYATTQLIQ SNL SNNMNGSGDSGEKHWKPLGQQKQEVAPVQYNI VEQNKLNDYRANDT
 VPPTIPYNQSYDQNTGGSY NSSDRGSSTSGSGHKKGARTPKVVKQGGMNWADLLPPPPA
 HPPPHSNSEEYNI SVDESVDQEMPCVPP ARMYLQQDELEEEEDERGPTPPVARGAASSPA
 AVSYSHQSTATLTPSPQEELQPMLQDCPEETGHHMQHPD RRRQPVSPPPRPISPPHTYGY
 ISGPLVSDMDTAPEEEEDEADMEVAKMQTRLLLRGLEQTPASSVG DLESSVTGSMINGWGS
 ASEDNISGRSSVSSSDGSFFTDADFAQAVAAAAEYAGLKVARRQMQDAAGR HFHSAQC
 PRPTSPVSTDSNMSAAVMQKTRPAKLLKHQPGHLRRETYTDDLPPPPVPPPAIKSPTAQSK
 TQ LEVVRPVVVKLP SMDARTDRSSDRKSSYKGREVL DGRQVDMRTNPGDPREAEQNDGK
 GRGNKAAKR DLPPAKTHLIQEDILPYCRPTFPTSNPRDPSSSSSMSSRGSGSRQREQANV
 GRRNIAEMQVLGGYERGE DNNEELETES

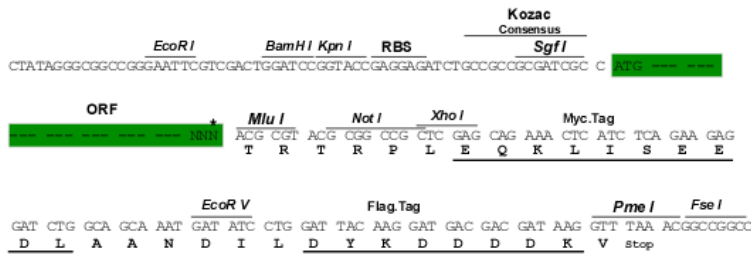
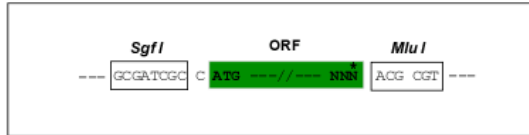
TRTRPLEQKLISEEDLAANDILDYKDDDDKV

Restriction Sites:

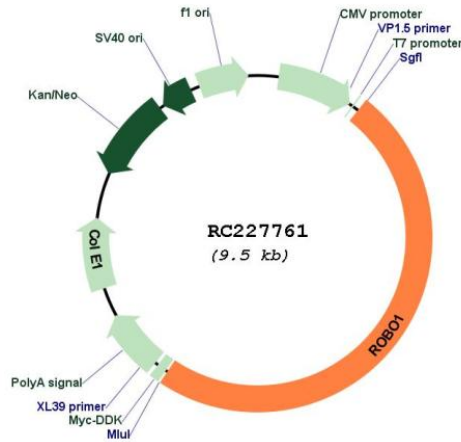
SgfI-MluI

Cloning Scheme:

Cloning sites used for ORF Shuttling:



* The last codon before the Stop codon of the ORF

Plasmid Map:


ACCN: NM_001145845

ORF Size: 4653 bp

OTI Disclaimer: The molecular sequence of this clone aligns with the gene accession number as a point of reference only. However, individual transcript sequences of the same gene can differ through naturally occurring variations (e.g. polymorphisms), each with its own valid existence. This clone is substantially in agreement with the reference, but a complete review of all prevailing variants is recommended prior to use. [More info](#)

OTI Annotation: This clone was engineered to express the complete ORF with an expression tag. Expression varies depending on the nature of the gene.

Components: The ORF clone is ion-exchange column purified and shipped in a 2D barcoded Matrix tube containing 10ug of transfection-ready, dried plasmid DNA (reconstitute with 100 ul of water).

Reconstitution Method:

1. Centrifuge at 5,000xg for 5min.
2. Carefully open the tube and add 100ul of sterile water to dissolve the DNA.
3. Close the tube and incubate for 10 minutes at room temperature.
4. Briefly vortex the tube and then do a quick spin (less than 5000xg) to concentrate the liquid at the bottom.
5. Store the suspended plasmid at -20°C. The DNA is stable for at least one year from date of shipping when stored at -20°C.

RefSeq:	<u>NM_001145845.1, NP_001139317.1</u>
RefSeq ORF:	4656 bp
Locus ID:	6091
UniProt ID:	<u>Q9Y6N7</u>
Cytogenetics:	3p12.3
Protein Families:	Druggable Genome
Protein Pathways:	Axon guidance
MW:	169.5 kDa
Gene Summary:	<p>Bilateral symmetric nervous systems have special midline structures that establish a partition between the two mirror image halves. Some axons project toward and across the midline in response to long-range chemoattractants emanating from the midline. The product of this gene is a member of the immunoglobulin gene superfamily and encodes an integral membrane protein that functions in axon guidance and neuronal precursor cell migration. This receptor is activated by SLIT-family proteins, resulting in a repulsive effect on glioma cell guidance in the developing brain. A related gene is located at an adjacent region on chromosome 3. Multiple transcript variants encoding different isoforms have been found for this gene. [provided by RefSeq, Mar 2009]</p>