

## Product datasheet for RC227759

### CHID1 (NM\_001142676) Human Tagged ORF Clone

#### Product data:

Product Type:	Expression Plasmids
Product Name:	CHID1 (NM_001142676) Human Tagged ORF Clone
Tag:	Myc-DDK
Symbol:	CHID1
Synonyms:	GL008; SI-CLP; SICLP
Mammalian Cell Selection:	Neomycin
Vector:	pCMV6-Entry (PS100001)
E. coli Selection:	Kanamycin (25 ug/mL)
ORF Nucleotide Sequence:	>RC227759 representing NM_001142676 Red=Cloning site Blue=ORF Green=Tags(s)

TTTTGTAATACGACTCACTATAGGGCGGCCGGAATTCGTCGACTGGATCCGGTACCGAGGAGATCTGCC  
GCC**CGATCGC**C

ATGCGGACACTCTTCAACCTCCTCTGGCTTGCCTGGCCTGCAGCCCTGTTCACTACCCTGTCAAAGT  
CAGATGCCAAAAAGCCGCTCAAAGACGCTGCTGGAGAAGTGAAGTTTGTCTTGTGGCCAGGCTG  
GAGCGCAATGGCGGATCTTGGCTACCGCAACCTCTGCCACCCAGAGTCAGTTTTAGATAAGCCGGT  
CAAGACCGGGTTTGGTGGTACGGACCTCAAAGCTGAGAGTGTGGTTCTTGAGCATCGCAGCTACTGCT  
CGGCAAAGGCCCGGACAGACACTTTGCTGGGGATGTACTGGGCTATGTCCTCCATGGAACAGCCATGG  
CTACGATGTACCAAGGTCTTTGGGAGCAAGTTCACACAGATCTCACCCGTCGGCTGCAGCTGAAGAGA  
CGTGGCCGTGAGATGTTTGGGTCACGGCCCTCCACGACGTGGACCAAGGGTGGATGCGAGCTGTACGGA  
AGCATGCCAAGGGCTGCACATAGTGCCTCGGCTCCTGTTTGGAGACTGGACTTACGATGATTTCCGGAA  
CGTCTTAGACAGTGAGGATGAGATAGAGGAGCTGAGCAAGACCGTGGTCCAGGTGGCAAAGAACCAGCAT  
TTCGATGGCTTCGTGGTGGAGGTCTGGAACCAGCTGCTAAGCCAGAAGCGGTGGCCCTCATCCACATGC  
TCACCCACTTGGCCGAGGCTCTGCACCAGGCCCGGCTGCTGGCCCTCCTGGTCAATCCCGCTGCCATCAC  
CCCCGGGACCGACAGCTGGGCATGTTACGCACAAGGAGTTTGAGCAGCTGGCCCCGTGCTGGATGGT  
TTCAGCCTCATGACCTACGACTACTACAGCGCATCAGCTGGCCCTAATGCACCCCTGTCTGGGTTT  
GAGCCTGCGTCCAGTCCAGTCCAGTCCAGTCCAGTCCAGTCCAGTCCAGTCCAGTCCAGTCCAGTCCAGT  
TGGTATGGACTACGCGACCTCCAAGGATGCCCGTGGGCTGTTGTGGGGCCAGGTACATCCAGACACTG  
AAGGACCACAGGCCCGGATGGTGTGGGACAGCCAGGCCCTCAGAGCACTTCTCGAGTACAAGAAGACCC  
GCAGTGGGAGGCAGTCTTCTACCCAACCCTGAAGTCCCTGCAGGTGCGGCTGGAGCTGGCCCCGGA  
GCTGGGCGTTGGGTCTCTATCTGGGAGCTGGGCCAGGCCCTGGACTACTTCTACGACTGCTC

**ACGCGT**ACGCGGCCGCTCGAGCAGAACTCATCTCAGAAGAGGATCTGGCAGCAAATGATATCTGGATT  
ACAAGGATGACGACGATAAGGTTTAA



[View online >](#)

**Protein Sequence:** >RC227759 representing NM\_001142676  
Red=Cloning site Green=Tags(s)

MRTLFNLLWLALACSPVHTTLSKSDAKKAASKTLLLEKVKFCSCCPGWSAMARSWLTATSATQSQFSDKPV  
 QDRGLVVTDLKAESVLEHRSYCSAKARDRHAFAGDVLGYVTPWNSHGVDVTKVFGSKFTQISPVWLQLKR  
 RGREMFVETGLHDVDQGWMAVRKHAKGLHIVPRLLFEDWTYDDFRNVL DSEDEIEELSKTVVQVAKNQH  
 FDGFVVEVWNQLLSQKRVGLIHMLTHLAEALHQARLLALLVIPPAITPGTDQLGMFTHKEFEQLAPVLDG  
 FSLMTYDYSTAHPQPNAPLSWVRACVQVLDPKSKWRSKILLGLNFYGM DYATSKDAREPVVGARYIQL  
 KDHRPRMVWDSQASEHFFEYKKSRSRGRHVVFYPTLKS LQVRELELARELGVGVS IWELGQGLDYFDLL

TRTRPLEQKLISEEDLAANDILDYKDDDDKVK

**Chromatograms:** [https://cdn.origene.com/chromatograms/mk8058\\_e03.zip](https://cdn.origene.com/chromatograms/mk8058_e03.zip)

**Restriction Sites:** SgfI-MluI

**Cloning Scheme:**



**ACCN:** NM\_001142676

**ORF Size:** 1254 bp

**OTI Disclaimer:** The molecular sequence of this clone aligns with the gene accession number as a point of reference only. However, individual transcript sequences of the same gene can differ through naturally occurring variations (e.g. polymorphisms), each with its own valid existence. This clone is substantially in agreement with the reference, but a complete review of all prevailing variants is recommended prior to use. [More info](#)

**OTI Annotation:** This clone was engineered to express the complete ORF with an expression tag. Expression varies depending on the nature of the gene.

**Components:** The ORF clone is ion-exchange column purified and shipped in a 2D barcoded Matrix tube containing 10ug of transfection-ready, dried plasmid DNA (reconstitute with 100 ul of water).

**Reconstitution Method:**

1. Centrifuge at 5,000xg for 5min.
2. Carefully open the tube and add 100ul of sterile water to dissolve the DNA.
3. Close the tube and incubate for 10 minutes at room temperature.
4. Briefly vortex the tube and then do a quick spin (less than 5000xg) to concentrate the liquid at the bottom.
5. Store the suspended plasmid at -20°C. The DNA is stable for at least one year from date of shipping when stored at -20°C.

**RefSeq:** [NM\\_001142676.2](#)

**RefSeq ORF:** 1257 bp

**Locus ID:** 66005

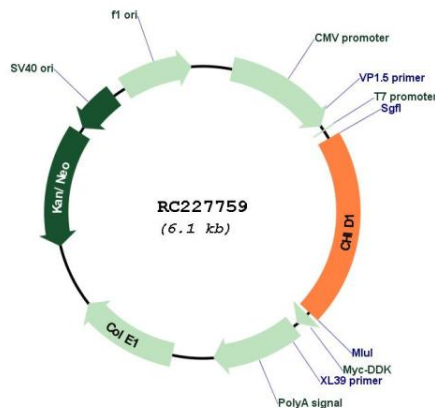
**UniProt ID:** [Q9BWS9](#)

**Cytogenetics:** 11p15.5

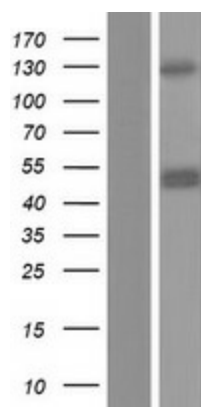
**MW:** 47.4 kDa

**Gene Summary:** Saccharide- and LPS-binding protein with possible roles in pathogen sensing and endotoxin neutralization. Ligand-binding specificity relates to the length of the oligosaccharides, with preference for chitotetraose (in vitro).[UniProtKB/Swiss-Prot Function]

**Product images:**



Circular map for RC227759



Western blot validation of overexpression lysate (Cat# [LY428240]) using anti-DDK antibody (Cat# [TA50011-100]). Left: Cell lysates from untransfected HEK293T cells; Right: Cell lysates from HEK293T cells transfected with RC227759 using transfection reagent MegaTran 2.0 (Cat# [TT210002]).