

Product datasheet for **RC227758**

CD32A (FCGR2A) (NM_001136219) Human Tagged ORF Clone

Product data:

Product Type: Expression Plasmids
Product Name: CD32A (FCGR2A) (NM_001136219) Human Tagged ORF Clone
Tag: Myc-DDK
Symbol: CD32A
Synonyms: CD32; CD32A; CDw32; FCG2; FcGR; FCGR2; FCGR2A1; IGFR2
Mammalian Cell Selection: Neomycin
Vector: pCMV6-Entry (PS100001)
E. coli Selection: Kanamycin (25 ug/mL)
ORF Nucleotide Sequence: >RC227758 representing NM_001136219
 Red=Cloning site Blue=ORF Green=Tags(s)

TTTTGTAATACGACTCACTATAGGGCGGCCGGAATTCGTCGACTGGATCCGGTACCGAGGAGATCTGCC
 GCC**CGATCGCC**

ATGACTATGGAGACCCAAATGTCTCAGAATGTATGTCCCAGAAACCTGTGGCTGCTTCAACCATTGACAG
 TTTTGCTGCTGGCTTCTGCAGACAGTCAAGCTGCAGCTCCCCAAAGGCTGTGCTGAAACTTGAGCC
 CCCGTGGATCAACGTGCTCCAGGAGGACTCTGTGACTCTGACATGCCAGGGGGCTCGCAGCCCTGAGAGC
 GACTCCATTCAAGTGGTCCACAATGGGAATCTCATTCCCACCCACACGCAGCCAGCTACAGTTCAAGG
 CCAACAACAATGACAGCGGGGAGTACACGTGCCAGACTGGCCAGACCAGCCTCAGCGACCCTGTGCATCT
 GACTGTGCTTTCCGAATGGTGGTGTCCAGACCCTCAGCTGGAGTTCCAGGAGGGAGAAACCATCATG
 CTGAGGTGCCACAGCTGGAAGGACAAGCCTCTGGTCAAGGTACATTCTTCCAGAATGGAATCCAGAA
 AATTCTCCCGTTTGGATCCCACCTTCTCCATCCCACAAGCAAACCACAGTACAGTGGTATTACCACTG
 CACAGGAAACATAGGCTACACGCTGTTCTCATCCAAGCCTGTGACCATCACTGTCCAAGTGGCCAGCATG
 GGCAGCTTTCACCAATGGGGATCATTGTGGCTGTGGTATTGCGACTGCTGTAGCAGCCATTGTTGCTG
 CTGTAGTGGCCTTGATCTACTGCAGGAAAAGCGGATTCAGCCAATCCACTGATCCTGTGAAGGCTGC
 CCAATTTGAGCCACCTGGACGTCAAATGATTGCCATCAGAAAGAGACAATTGAAGAAACCAACAATGAC
 TATGAAACAGCTGACGGCGGCTACATGACTCTGAACCCAGGGCACCTACTGACGATGATAAAAACATCT
 ACCTGACTCTTCTCCCAACGACCATGTCAACAGTAATAAC

ACGCGTACGCGGCCGCTCGAGCAGAAACTCATCTCAGAAGAGGATCTGGCAGCAAATGATATCCTGGATT
 ACAAGGATGACGACGATAAGGTTTAA



[View online »](#)

Protein Sequence: >RC227758 representing NM_001136219
Red=Cloning site Green=Tags(s)

MTMETQMSQNVCPRLWLLQPLTVLLLLASADSQAAAPPKAVLKLEPPWINVLQEDSVLTCQGARSPE
 DSIQWFHNGNLIPTHTQPSYRFKANNNDSGEYTCQTGQTSLSDPVHLTVLSEWLVLQTPHLEFQEGETIM
 LRCHSWKDKPLVKVTFQNGKSQKFSRLDPTFSIPQANHSHSGDYHCTGNIGYTLFSSKPVTITVQVPSM
 GSSSPMGIIVAVVIATAVAAIIVAAVVALIYCRKKRISANSTDPVAAAQFEPPGRQMI AIRKRQLEETNND
 YETADGGYMTLNPRAPTDDDKNIYLTLPPNDHVNSNN

TRTRPLEQKLISEEDLAANDILDYKDDDDKV

Restriction Sites: SgfI-MluI

Cloning Scheme:

Cloning sites used for ORF Shuttling:



* The last codon before the Stop codon of the ORF

ACCN: NM_001136219

ORF Size: 951 bp

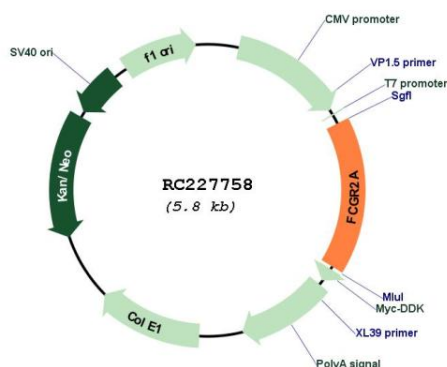
OTI Disclaimer: Due to the inherent nature of this plasmid, standard methods to replicate additional amounts of DNA in E. coli are highly likely to result in mutations and/or rearrangements. Therefore, OriGene does not guarantee the capability to replicate this plasmid DNA. Additional amounts of DNA can be purchased from OriGene with batch-specific, full-sequence verification at a reduced cost. Please contact our customer care team at custsupport@origene.com or by calling 301.340.3188 option 3 for pricing and delivery.

The molecular sequence of this clone aligns with the gene accession number as a point of reference only. However, individual transcript sequences of the same gene can differ through naturally occurring variations (e.g. polymorphisms), each with its own valid existence. This clone is substantially in agreement with the reference, but a complete review of all prevailing variants is recommended prior to use. [More info](#)

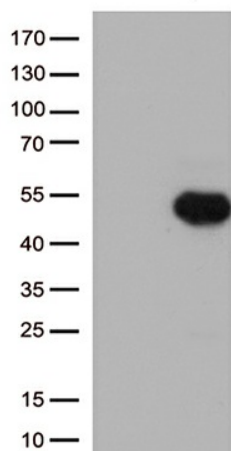
OTI Annotation: This clone was engineered to express the complete ORF with an expression tag. Expression varies depending on the nature of the gene.

Components:	The ORF clone is ion-exchange column purified and shipped in a 2D barcoded Matrix tube containing 10ug of transfection-ready, dried plasmid DNA (reconstitute with 100 ul of water).
Reconstitution Method:	<ol style="list-style-type: none"> 1. Centrifuge at 5,000xg for 5min. 2. Carefully open the tube and add 100ul of sterile water to dissolve the DNA. 3. Close the tube and incubate for 10 minutes at room temperature. 4. Briefly vortex the tube and then do a quick spin (less than 5000xg) to concentrate the liquid at the bottom. 5. Store the suspended plasmid at -20°C. The DNA is stable for at least one year from date of shipping when stored at -20°C.
RefSeq:	<u>NM_001136219.1, NP_001129691.1</u>
RefSeq Size:	2429 bp
RefSeq ORF:	954 bp
Locus ID:	2212
UniProt ID:	<u>P12318</u>
Cytogenetics:	1q23.3
Protein Families:	ES Cell Differentiation/IPS, Transmembrane
Protein Pathways:	Fc gamma R-mediated phagocytosis, Systemic lupus erythematosus
MW:	35 kDa
Gene Summary:	This gene encodes one member of a family of immunoglobulin Fc receptor genes found on the surface of many immune response cells. The protein encoded by this gene is a cell surface receptor found on phagocytic cells such as macrophages and neutrophils, and is involved in the process of phagocytosis and clearing of immune complexes. Alternative splicing results in multiple transcript variants. [provided by RefSeq, Oct 2008]

Product images:



Circular map for RC227758



HEK293T cells were transfected with the pCMV6-ENTRY control (Cat# [PS100001], Left lane) or pCMV6-ENTRY FCGR2A (Cat# RC227758, Right lane) cDNA for 48 hrs and lysed. Equivalent amounts of cell lysates (5 ug per lane) were separated by SDS-PAGE and immunoblotted with anti-FCGR2A (Cat# [TA500652])(1:500).